

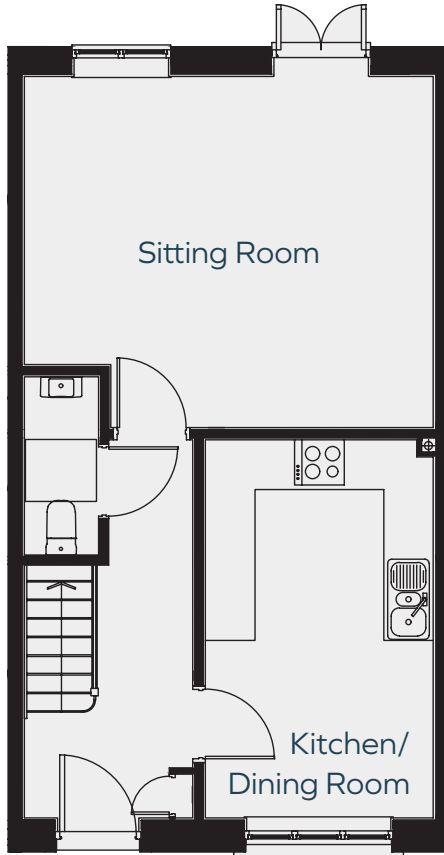


**Plot 297**

A three bedroom terrace house with two allocated parking spaces

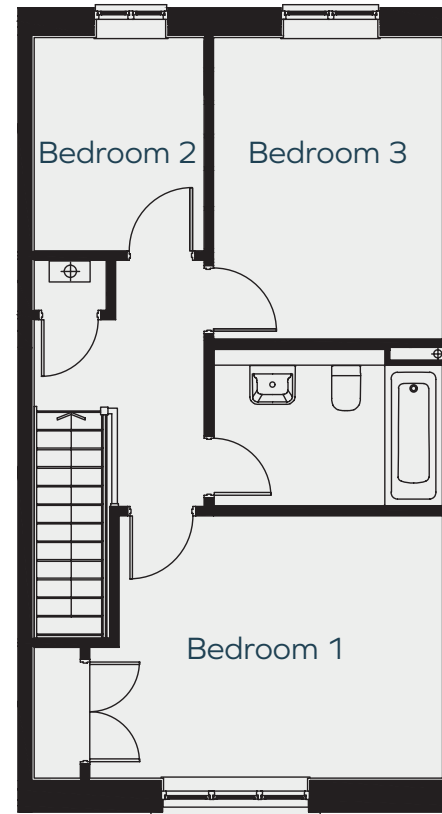
**M** MORRISH  
HOMES

## Ground Floor



Kitchen/Dining Room 4.6m max x 2.8m 15'1" x 9'2"  
Sitting Room 5.0m max x 4.3m max 16'4" x 14'1"

## First Floor



Bedroom 1 4.3m max x 4.2m 14'1" x 13'9"  
Bedroom 2 3.6m x 2.8m 11'9" x 9'2"  
Bedroom 3 2.6m x 2.0m 8'6" x 6'6"

**Plot 297** Total area: 90sqm/968sqft

Plot floor plans are provided to indicate proposed floor layout for each home. Room measurements are accurate within + or - 50mm, however it is not recommended that these measurements are used for flooring installation, or such like.