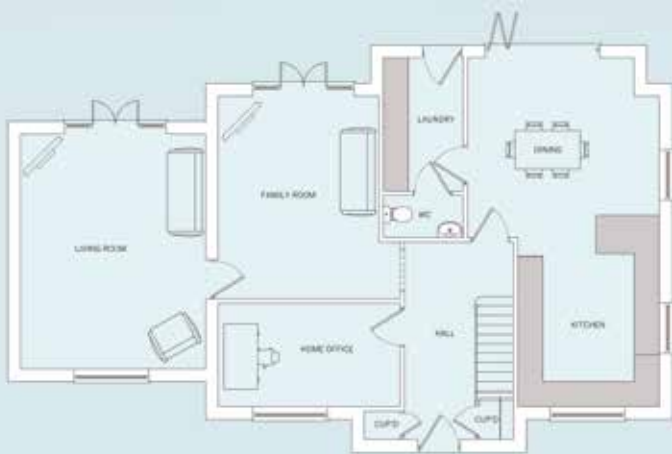


5 Bedroom Detached House

The Pitkeathly impresses with the flexibility and generous accommodation offered in this 5 bedroom detached house, making this a home ideal for the needs of a growing family.

The ground floor offers maximum space with the living room, family room, home office and the triple aspect dining kitchen leads in the rear garden via bi-fold doors, with the laundry room and guest cloakroom leading off.

The first floor boasts the master bedroom with en-suite and double built in wardrobes with a further four bedrooms, including the second bedroom with en-suite and a family bathroom with separate shower pod.



Ground floor

Kitchen & Dining	4540 x 8250mm max 14'10" x 27'0"	Family Room	3800 x 4800mm 12'5" x 15'8"
Laundry Room	1890 x 3150mm 6'2" x 10'4"	Home Office	4300 x 2450mm 14'1" x 8'0"
Living Room	4375 x 5550mm 14'4" x 18'2"	Guest Cloakroom	1890 x 1000mm 6'2" x 3'3"



First floor

Master Bedroom	4375 x 5550mm max 14'4" x 18'2"	Jack & Jill Shower Room	1640 x 3100mm max 5'4" x 10'2"
En-Suite	2710 x 1240mm 8'10" x 4'0"	Bedroom 4	3800 x 3350mm 12'5" x 10'11"
Bedroom 2	3350 x 3900mm min 10'11" x 12'9"	Bedroom 5 (excl wardrobe)	4300 x 2800mm max 14'1" x 9'2"
Bedroom 3	2800 x 4250mm 9'2" x 13'11"	Bathroom	1890 x 4250mm 6'2" x 13'11"