


Wain
HOMES



A place that lets you be you.
That says everything about you.
That feels good, feels right.
Where life can be beautifully imperfect.
And you love every moment of it.

YOUR KIND OF *perfect*

BADBURY GREEN DEVELOPMENT PLAN



2 Bedroom Homes

- The Bell (BEL)
- The Bude (BUD)
- The Marlow (MAR)

3 Bedroom Homes

- The Hatherleigh (HAT)
- The Haversham (HAV)
- The Wren (WRN)

4 Bedroom Homes

- The Birch (BIR)

5 Bedroom Homes

- The Cinnamon (CIN)
- The Maple (MAP)
- The Snowberry (SNW)

Affordable Homes

- * Shared Ownership Homes
- Affordable Rent Homes

(Location of affordable / rented homes is indicative)



Wain Homes abides by the New Homes Quality Code, an independent industry code introduced to champion quality new homes and better consumer outcomes. Dimensions shown are internal finished dimensions which may vary as each home is built individually and the precise internal finishes may not always be the same. Please be aware that window and door positions could vary due to plot orientation. It is essential to view the working drawings with our Sales Executive for plot specific detail. Enquire for further information. Wain Homes Policy is continuous product and specification development. Every effort has been made to ensure the accuracy of the information provided in this leaflet at the date of publication but it may be subject to change without notice. Please consult with our Sales Executive to obtain the current specification. You should take appropriate steps to verify any information upon which you wish to rely. The sizes indicated are not intended to be used for carpet sizes, appliance spaces or items of furniture. Elevational treatments may vary to those shown. These particulars are intended for guidance only and their accuracy is not guaranteed. They do not constitute a contract, part of a contract or warranty. (April 2025)



BADBURY GREEN SPECIFICATION

BELL | BUDE | MARLOW | HATHERLEIGH | HAVERSHAM | WREN | BIRCH
CINNAMON | MAPLE | SNOWBERRY

KITCHENS

- Luxury Fitted Kitchen* with a Choice of Finishes**
- Laminated Worktops to Kitchen with matching upstands
- Stainless Steel AEG Single/Double Electric Oven, AEG Induction hob and Glass Splashback***
- Electrolux Integrated Dishwasher
- Electrolux Integrated Washing Machine
- Electrolux Integrated Fridge Freezer
- ½ Bowl Inset Stainless Steel Sink and Tap to the Kitchen
- Single Bowl Stainless Steel Sink and Tap to Utility Rooms (where applicable)
- White Downlights to Kitchen
- Wooden Cutlery Tray
- Pelmet Lighting to Kitchen

BATHROOMS

- Roca Vanity Unit to Bathroom and En-Suite 1* in a Choice of Finishes**
- Roca Gap Sanitaryware to Cloakroom and En-Suite 2 in White with Semi Pedestals and Soft Close Seats
- Roca Gap Bath
- Aqualisa Downtown Brassware
- Aqualisa Mian 2-Way Mixer Shower with Drencher and Adjustable Hose to Shower Cubicles
- Aqualisa Mian 3-Way Mixer Shower with Drencher and Adjustable Hose to Baths with no Separate Shower Cubicle
- Chrome Shower Cubicles
- Bathrooms and En-Suites to be Half-Tiled throughout with a Choice** from our Standard Range*
- Shower Cubicles to be Fully-Tiled with a Choice** from our Standard Range*
- Half-Height Tiling to all Sanitaryware Walls in Cloakroom with a Choice** from our Standard Range*
- White Heated Towel Rail to Bathroom and En-Suites
- White Downlights to Bathrooms and En-Suites
- White Shaver Socket to Bathrooms and En-suites

BEDROOMS

- Spacepro Fitted Wardrobes with Sliding Doors to Bedroom 1+
- Television Aerial Point to Bedroom 1
- Telephone Point to Bedroom 1
- Data Point with CAT6 Wiring to Bedroom 1

OTHER INTERNAL FEATURES

- LVT Flooring to Kitchen, Dining, Utility, Bathrooms, En-Suites and Cloakrooms in a Choice of Finishes**
- Carpets from our Standard Range to all other areas in a Choice of Finishes**
- All Walls and Ceilings to have Covermatt Emulsion Finish
- Staircase, including Newel Posts and Spindles, to be Finished in White
- Oak Effect Handrail and Newel Caps
- Contemporary 5-Panel Oak Doors with Chrome Effect Door Furniture
- Ultrafast Hard Wired Fibre Broadband†
- CAT6 Cabling to Lounge and Bedroom 1
- Slimline White Sockets and Switches to all Rooms
- Hard Wired Smoke Detectors with Battery Backup
- White USB Sockets to Kitchen, Lounge, Family Room and all Bedrooms
- System 3 Ventilation System

EXTERNAL FEATURES

- PVCu White Double Glazed Windows, French Doors/Bifold and Rear Doors (where applicable)***
- Black Rainwater Goods
- External PIR Lights to Front and Rear
- External Tap
- Power and Lighting to all Integral and Detached Garages (where applicable)
- Gardens Landscaped to Front
- Gardens Turfed to Rear
- Electric Car Charging Unit
- 1.8m Close Boarded Divisional Fencing to Rear Garden^

HEATING

- Ideal Air Source Heat Pumps
- Ideal Smart Heating Thermostat

WARRANTIES

- 10-Year NHBC Buildmark Warranty
- 2-Year Wain Homes Warranty

*Upgraded Kitchen Choices Available. **Subject to build stage. ***Size depending on house type. †Ultrafast Fibre is the latest in broadband technology that sees your broadband speeds faster than ever before – the next generation of internet, as fibre optic technology evolves, you'll already have everything you need in your property to get the benefits. Please note these services may be not fully active at completion stage until the relevant works have been completed by the service provider. ^Excluding mirrors ^Unless stipulated otherwise on the working drawings.

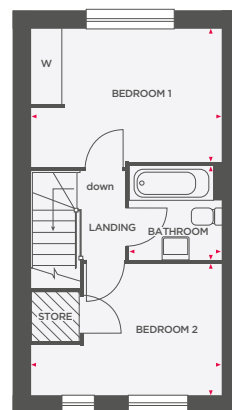
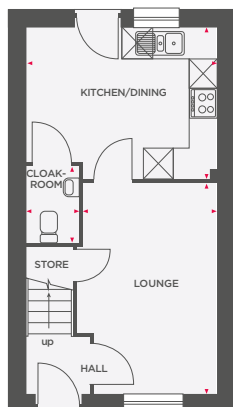
Wain Homes Policy is continuous product and specification development. Images shown are for illustrative purposes only. Every effort has been made to ensure the accuracy of the information provided in this leaflet at the date of publication but it may be subject to change without notice. Specification choices are subject to build stage. Please consult with our Sales Executive to obtain the current specification or the specification of any particular plot. You should take appropriate steps to verify any information upon which you wish to rely. These particulars are intended for guidance only and their accuracy is not guaranteed. They do not constitute a contract, part of a contract or warranty. (April 2025)

wain
HOMES



THE BELL

2 BEDROOM SEMI-DETACHED HOME



| | | |
|----------------|-------------|---------------|
| Lounge | 2737 x 4300 | 8'9" x 14'1" |
| Kitchen/Dining | 3875 x 3063 | 12'7" x 10'0" |
| Cloakroom | 1050 x 1550 | 3'4" x 5'0" |

| | | |
|-----------|-------------|--------------|
| Bedroom 1 | 3875 x 2687 | 12'7" x 8'8" |
| Bedroom 2 | 3875 x 1687 | 12'7" x 5'5" |
| Bathroom | 1888 x 1900 | 6'1" x 6'2" |

 Depicts integrated appliance
 W Wardrobe
 Limited Use Area



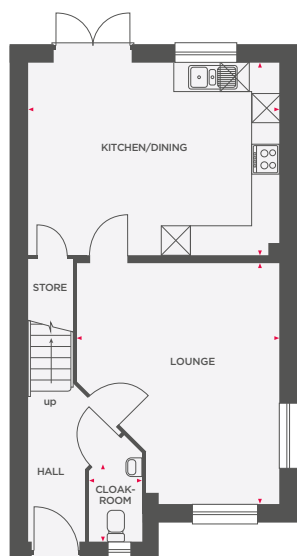
Wain Homes abides by the New Homes Quality Code, an independent industry code introduced to champion quality new homes and better consumer outcomes. Dimensions shown are internal finished dimensions which may vary as each home is built individually and the precise internal finishes may not always be the same. Please be aware that window and door positions could vary due to plot orientation. It is essential to view the working drawings with our Sales Executive for plot specific detail. Enquire for further information. Wain Homes Policy is continuous product and specification development. Every effort has been made to ensure the accuracy of the information provided in this leaflet at the date of publication but it may be subject to change without notice. Please consult with our Sales Executive to obtain the current specification. You should take appropriate steps to verify any information upon which you wish to rely. The sizes indicated are not intended to be used for carpet sizes, appliance spaces or items of furniture. Elevational treatments may vary to those shown. These particulars are intended for guidance only and their accuracy is not guaranteed. They do not constitute a contract, part of a contract or warranty. (April 2025)



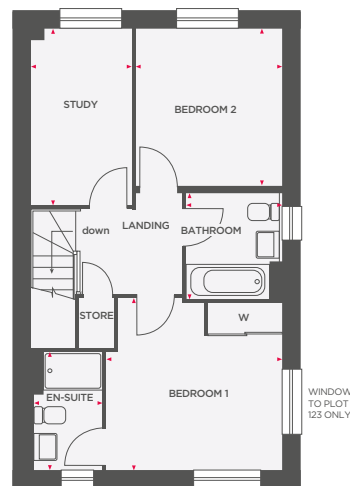


THE BUDE

2 BEDROOM DETACHED/SEMI-DETACHED HOME WITH STUDY



| | | |
|----------------|-------------|---------------|
| Lounge | 4147 x 4957 | 13'6" x 16'2" |
| Kitchen/Dining | 5117 x 3933 | 16'7" x 12'9" |
| Cloakroom | 1072 x 2184 | 3'5" x 7'1" |



| | | |
|-----------|-------------|---------------|
| Bedroom 1 | 3579 x 3419 | 11'7" x 11'2" |
| En-Suite | 1399 x 2418 | 4'5" x 7'9" |
| Bedroom 2 | 2982 x 3219 | 9'7" x 10'5" |
| Study | 2047 x 3591 | 6'7" x 11'7" |
| Bathroom | 1887 x 2165 | 6'1" x 7'1" |

⊠ Depicts integrated appliance W Wardrobe



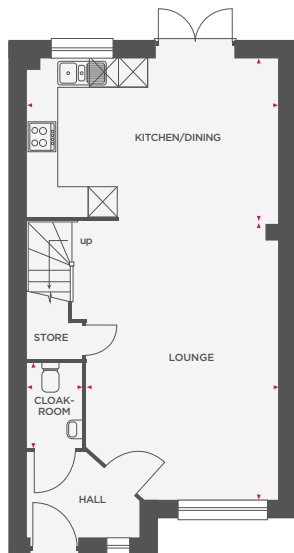
Wain Homes abides by the New Homes Quality Code, an independent industry code introduced to champion quality new homes and better consumer outcomes. Dimensions shown are internal finished dimensions which may vary as each home is built individually and the precise internal finishes may not always be the same. Please be aware that window and door positions could vary due to plot orientation. It is essential to view the working drawings with our Sales Executive for plot specific detail. Enquire for further information. Wain Homes Policy is continuous product and specification development. Every effort has been made to ensure the accuracy of the information provided in this leaflet at the date of publication but it may be subject to change without notice. Please consult with our Sales Executive to obtain the current specification. You should take appropriate steps to verify any information upon which you wish to rely. The sizes indicated are not intended to be used for carpet sizes, appliance spaces or items of furniture. Elevational treatments may vary to those shown. These particulars are intended for guidance only and their accuracy is not guaranteed. They do not constitute a contract, part of a contract or warranty. (April 2025)

Wain
HOMES

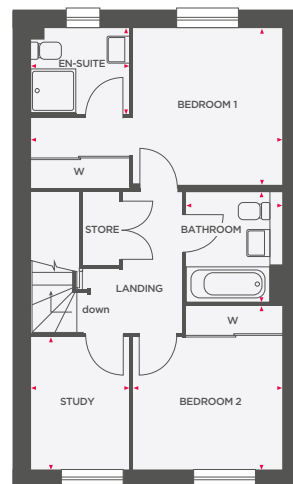


THE MARLOW

2 BEDROOM SEMI-DETACHED HOME WITH STUDY



| | | |
|----------------|-------------|---------------|
| Lounge | 3909 x 5672 | 12'8" x 18'6" |
| Kitchen/Dining | 5117 x 3250 | 16'7" x 10'6" |
| Cloakroom | 1120 x 1719 | 3'6" x 5'6" |



| | | |
|-----------|-------------|---------------|
| Bedroom 1 | 5117 x 3219 | 16'7" x 10'5" |
| En-Suite | 1999 x 1763 | 6'5" x 5'7" |
| Bedroom 2 | 3029 x 3341 | 9'9" x 10'9" |
| Study | 2000 x 2691 | 6'5" x 8'8" |
| Bathroom | 1950 x 2242 | 6'3" x 7'3" |

⊠ Depicts integrated appliance W Wardrobe



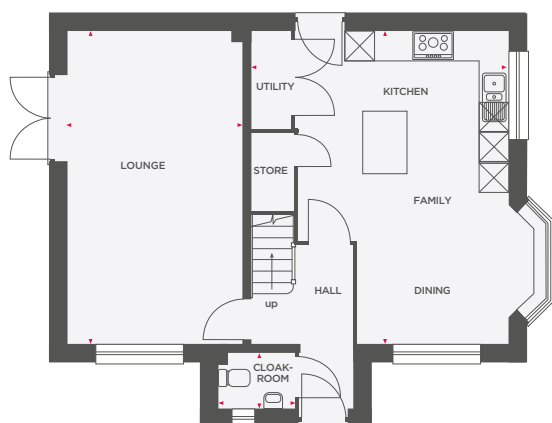
Wain Homes abides by the New Homes Quality Code, an independent industry code introduced to champion quality new homes and better consumer outcomes. Dimensions shown are internal finished dimensions which may vary as each home is built individually and the precise internal finishes may not always be the same. Please be aware that window and door positions could vary due to plot orientation. It is essential to view the working drawings with our Sales Executive for plot specific detail. Enquire for further information. Wain Homes Policy is continuous product and specification development. Every effort has been made to ensure the accuracy of the information provided in this leaflet at the date of publication but it may be subject to change without notice. Please consult with our Sales Executive to obtain the current specification. You should take appropriate steps to verify any information upon which you wish to rely. The sizes indicated are not intended to be used for carpet sizes, appliance spaces or items of furniture. Elevational treatments may vary to those shown. These particulars are intended for guidance only and their accuracy is not guaranteed. They do not constitute a contract, part of a contract or warranty. (April 2025)

**Wain
HOMES**

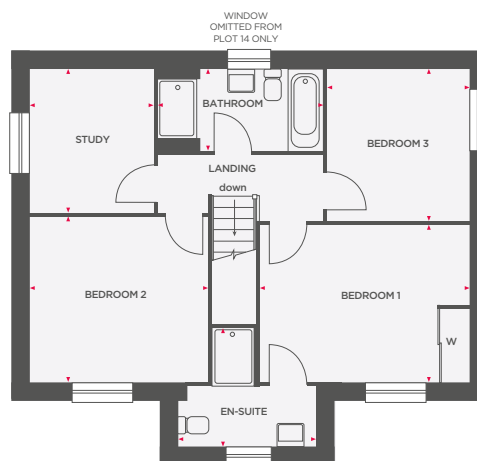


THE HATHERLEIGH

3 BEDROOM DETACHED HOME WITH STUDY



| | | |
|------------------------|-------------|---------------|
| Lounge | 3605 x 6423 | 11'9" x 21'0" |
| Kitchen/Utility/Dining | 5256 x 6423 | 17'2" x 21'0" |
| Cloakroom | 1150 x 1613 | 3'7" x 5'2" |



| | | |
|-----------|-------------|---------------|
| Bedroom 1 | 4285 x 3204 | 14'0" x 10'6" |
| En-Suite | 2405 x 2823 | 7'8" x 9'2" |
| Bedroom 2 | 3663 x 3377 | 12'0" x 11'0" |
| Bedroom 3 | 2904 x 3127 | 9'6" x 10'3" |
| Study | 2958 x 2561 | 9'8" x 8'3" |
| Bathroom | 3337 x 1650 | 10'9" x 5'4" |

 Depicts integrated appliance W Wardrobe



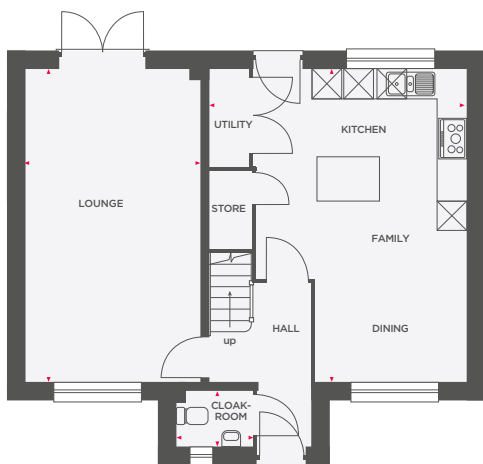
Wain Homes abides by the New Homes Quality Code, an independent industry code introduced to champion quality new homes and better consumer outcomes. Dimensions shown are internal finished dimensions which may vary as each home is built individually and the precise internal finishes may not always be the same. Please be aware that window and door positions could vary due to plot orientation. It is essential to view the working drawings with our Sales Executive for plot specific detail. Enquire for further information. Wain Homes Policy is continuous product and specification development. Every effort has been made to ensure the accuracy of the information provided in this leaflet at the date of publication but it may be subject to change without notice. Please consult with our Sales Executive to obtain the current specification. You should take appropriate steps to verify any information upon which you wish to rely. The sizes indicated are not intended to be used for carpet sizes, appliance spaces or items of furniture. Elevational treatments may vary to those shown. These particulars are intended for guidance only and their accuracy is not guaranteed. They do not constitute a contract, part of a contract or warranty. (April 2025)



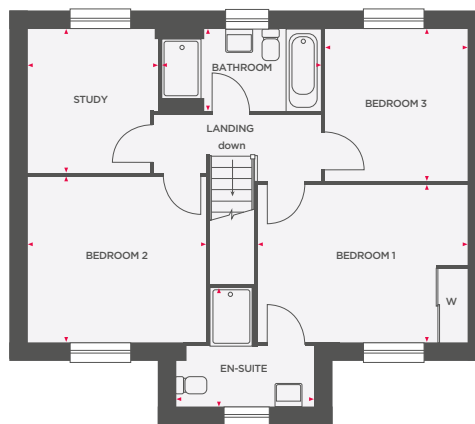


THE HAVERSHAM


3 BEDROOM DETACHED HOME WITH STUDY



| | | |
|------------------------|-------------|---------------|
| Lounge | 3605 x 6423 | 11'9" x 21'0" |
| Kitchen/Utility/Dining | 4364 x 6423 | 14'3" x 21'0" |
| Cloakroom | 1150 x 1613 | 3'7" x 5'2" |



| | | |
|-----------|-------------|---------------|
| Bedroom 1 | 4183 x 3204 | 13'8" x 10'6" |
| En-Suite | 2823 x 2404 | 9'2" x 7'8" |
| Bedroom 2 | 3663 x 3377 | 12'0" x 11'0" |
| Bedroom 3 | 2898 x 3127 | 9'6" x 10'3" |
| Study | 2995 x 2695 | 9'8" x 8'9" |
| Bathroom | 1650 x 3211 | 5'4" x 10'5" |

 Depicts integrated appliance W Wardrobe



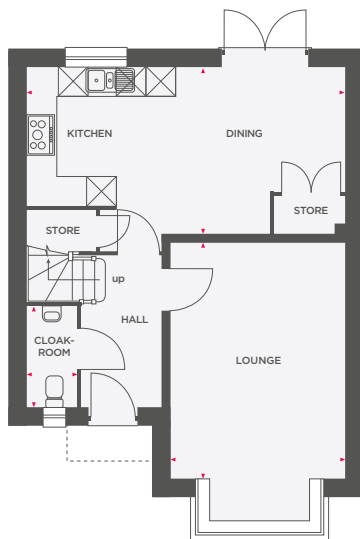
Wain Homes abides by the New Homes Quality Code, an independent industry code introduced to champion quality new homes and better consumer outcomes. Dimensions shown are internal finished dimensions which may vary as each home is built individually and the precise internal finishes may not always be the same. Please be aware that window and door positions could vary due to plot orientation. It is essential to view the working drawings with our Sales Executive for plot specific detail. Enquire for further information. Wain Homes Policy is continuous product and specification development. Every effort has been made to ensure the accuracy of the information provided in this leaflet at the date of publication but it may be subject to change without notice. Please consult with our Sales Executive to obtain the current specification. You should take appropriate steps to verify any information upon which you wish to rely. The sizes indicated are not intended to be used for carpet sizes, appliance spaces or items of furniture. Elevational treatments may vary to those shown. These particulars are intended for guidance only and their accuracy is not guaranteed. They do not constitute a contract, part of a contract or warranty. (April 2025)



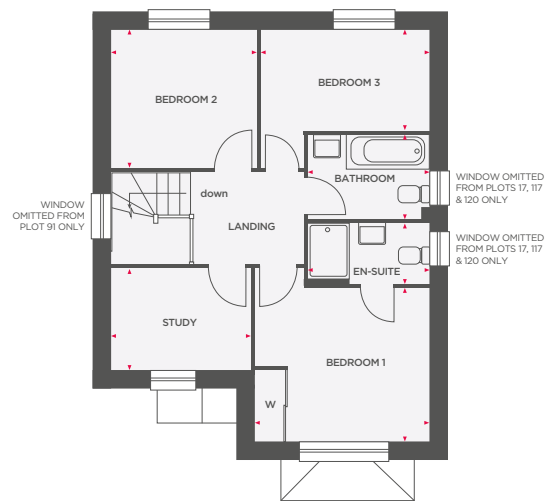


THE WREN

3 BEDROOM DETACHED HOME WITH STUDY



| | | |
|----------------|-------------|-----------------|
| Lounge | 3610 x 4875 | 11'10" x 15'11" |
| Kitchen/Dining | 6535 x 3453 | 21'5" x 11'4" |
| Cloakroom | 1020 x 2095 | 3'3" x 6'8" |



| | | |
|-----------|-------------|---------------|
| Bedroom 1 | 3602 x 3164 | 11'9" x 10'5" |
| En-Suite | 2531 x 1201 | 8'3" x 5'5" |
| Bedroom 2 | 2953 x 2840 | 9'7" x 9'3" |
| Bedroom 3 | 3491 x 2091 | 11'5" x 6'10" |
| Study | 2841 x 2094 | 9'3" x 6'10" |
| Bathroom | 1689 x 2531 | 5'5" x 8'3" |

⊠ Depicts integrated appliance W Wardrobe



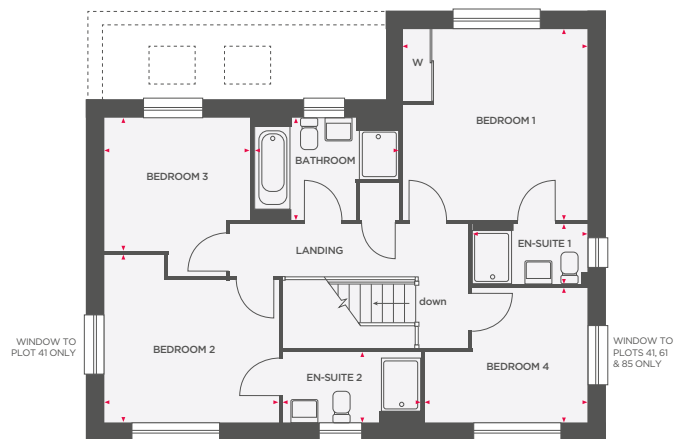
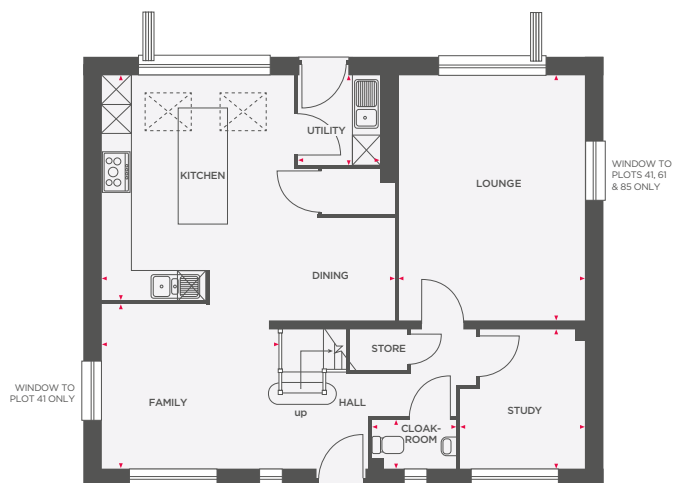
Wain Homes abides by the New Homes Quality Code, an independent industry code introduced to champion quality new homes and better consumer outcomes. Dimensions shown are internal finished dimensions which may vary as each home is built individually and the precise internal finishes may not always be the same. Please be aware that window and door positions could vary due to plot orientation. It is essential to view the working drawings with our Sales Executive for plot specific detail. Enquire for further information. Wain Homes Policy is continuous product and specification development. Every effort has been made to ensure the accuracy of the information provided in this leaflet at the date of publication but it may be subject to change without notice. Please consult with our Sales Executive to obtain the current specification. You should take appropriate steps to verify any information upon which you wish to rely. The sizes indicated are not intended to be used for carpet sizes, appliance spaces or items of furniture. Elevational treatments may vary to those shown. These particulars are intended for guidance only and their accuracy is not guaranteed. They do not constitute a contract, part of a contract or warranty. (April 2025)





THE BIRCH

4 BEDROOM DETACHED HOME



| | | |
|----------------|-------------|----------------|
| Lounge | 3835 x 5063 | 12'7" x 16'7" |
| Kitchen/Dining | 5987 x 4622 | 19'7" x 15'1" |
| Utility | 1690 x 1862 | 5'6" x 6'1" |
| Study | 2581 x 2898 | 8'5" x 9'6" |
| Family | 3625 x 3394 | 11'10" x 11'5" |
| Cloakroom | 1032 x 1702 | 3'3" x 5'5" |

| | | |
|------------|-------------|----------------|
| Bedroom 1 | 3835 x 3940 | 12'7" x 12'11" |
| En-Suite 1 | 2410 x 1209 | 7'9" x 3'9" |
| Bedroom 2 | 3566 x 3463 | 11'8" x 11'4" |
| En-Suite 2 | 2776 x 1433 | 9'1" x 4'7" |
| Bedroom 3 | 2760 x 2981 | 9'0" x 9'9" |
| Bedroom 4 | 3369 x 2792 | 11'05" x 9'3" |
| Bathroom | 2919 x 2090 | 9'5" x 6'8" |

☒ Depicts integrated appliance W Wardrobe



Wain Homes abides by the New Homes Quality Code, an independent industry code introduced to champion quality new homes and better consumer outcomes. Dimensions shown are internal finished dimensions which may vary as each home is built individually and the precise internal finishes may not always be the same. Please be aware that window and door positions could vary due to plot orientation. It is essential to view the working drawings with our Sales Executive for plot specific detail. Enquire for further information. Wain Homes Policy is continuous product and specification development. Every effort has been made to ensure the accuracy of the information provided in this leaflet at the date of publication but it may be subject to change without notice. Please consult with our Sales Executive to obtain the current specification. You should take appropriate steps to verify any information upon which you wish to rely. The sizes indicated are not intended to be used for carpet sizes, appliance spaces or items of furniture. Elevational treatments may vary to those shown. These particulars are intended for guidance only and their accuracy is not guaranteed. They do not constitute a contract, part of a contract or warranty. (April 2025)



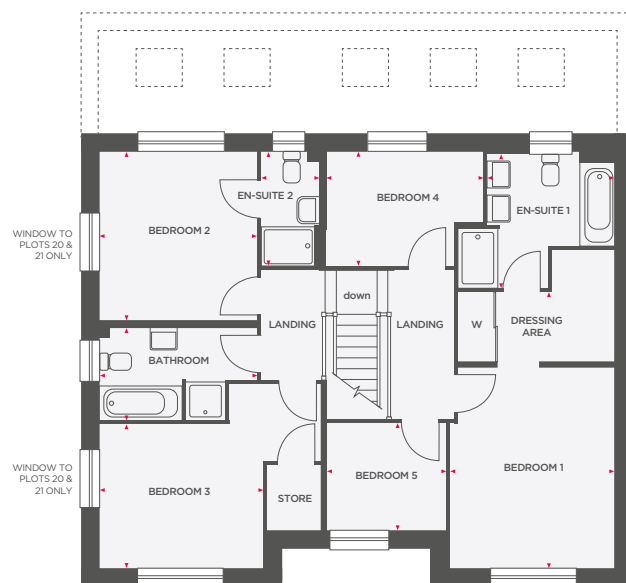


THE CINNAMON


5 BEDROOM DETACHED HOME



| | | |
|----------------|-------------|----------------|
| Lounge | 4193 x 5975 | 13'7" x 19'7" |
| Dining | 3385 x 4909 | 11'1" x 16'1" |
| Kitchen/Family | 6203 x 5468 | 20'3" x 17'11" |
| Utility | 3385 x 1729 | 11'1" x 5'6" |
| Study | 3385 x 2187 | 11'1" x 7'2" |
| Cloakroom | 1325 x 2227 | 4'3" x 7'3" |



| | | |
|------------|-------------|---------------|
| Bedroom 1 | 3385 x 4166 | 11'1" x 13'8" |
| En-Suite 1 | 2631 x 2767 | 8'6" x 9'0" |
| Bedroom 2 | 3253 x 3475 | 10'8" x 11'4" |
| En-Suite 2 | 2325 x 1200 | 7'6" x 3'9" |
| Bedroom 3 | 3385 x 2984 | 11'1" x 9'9" |
| Bedroom 4 | 3213 x 2325 | 10'6" x 7'7" |
| Bedroom 5 | 2448 x 2247 | 8'0" x 7'4" |
| Bathroom | 1901 x 3253 | 6'2" x 10'6" |

 Depicts integrated appliance W Wardrobe



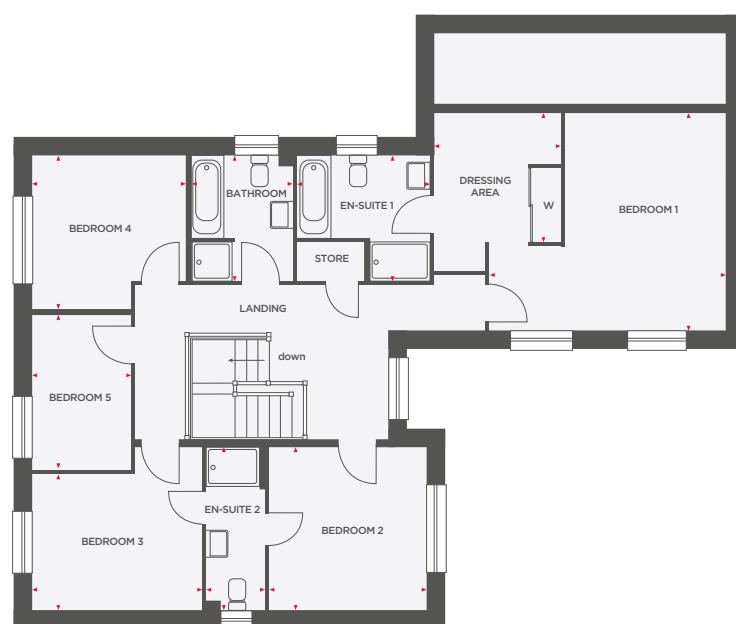
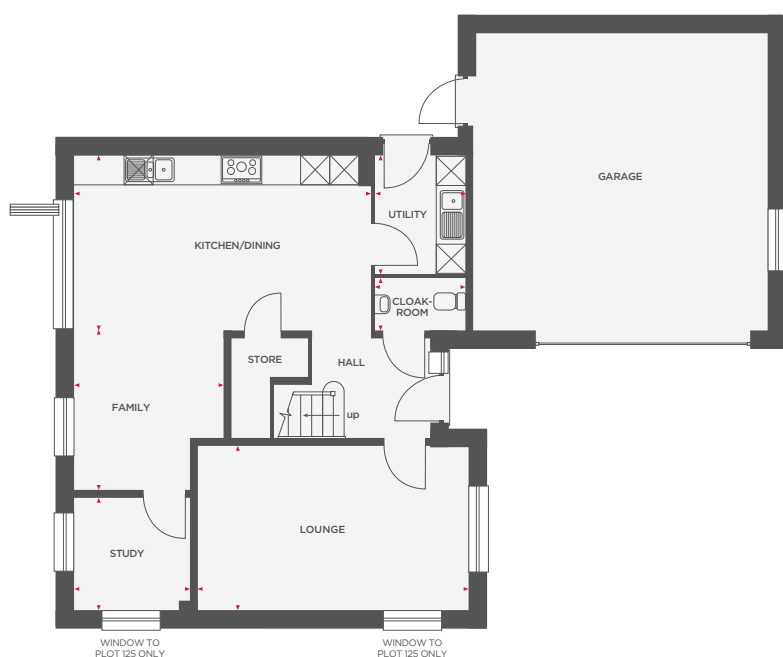
Wain Homes abides by the New Homes Quality Code, an independent industry code introduced to champion quality new homes and better consumer outcomes. Dimensions shown are internal finished dimensions which may vary as each home is built individually and the precise internal finishes may not always be the same. Please be aware that window and door positions could vary due to plot orientation. It is essential to view the working drawings with our Sales Executive for plot specific detail. Enquire for further information. Wain Homes Policy is continuous product and specification development. Every effort has been made to ensure the accuracy of the information provided in this leaflet at the date of publication but it may be subject to change without notice. Please consult with our Sales Executive to obtain the current specification. You should take appropriate steps to verify any information upon which you wish to rely. The sizes indicated are not intended to be used for carpet sizes, appliance spaces or items of furniture. Elevational treatments may vary to those shown. These particulars are intended for guidance only and their accuracy is not guaranteed. They do not constitute a contract, part of a contract or warranty. (April 2025)





THE MAPLE

5 BEDROOM DETACHED HOME



| | | |
|----------------|-------------|-----------------|
| Lounge | 5550 x 3385 | 18'2" x 11'1" |
| Kitchen/Dining | 6088 x 3611 | 19'11" x 11'10" |
| Utility | 1862 x 2460 | 6'1" x 8'0" |
| Family | 3100 x 3287 | 10'2" x 10'9" |
| Study | 2410 x 2364 | 7'10" x 7'7" |
| Cloakroom | 1862 x 1063 | 6'10" x 3'4" |

| | | |
|------------|-------------|----------------|
| Bedroom 1 | 4835 x 4448 | 15'10" x 14'7" |
| En-Suite 1 | 2588 x 2699 | 8'4" x 8'8" |
| Bedroom 2 | 3255 x 3385 | 10'8" x 11'1" |
| En-Suite 2 | 1200 x 3385 | 3'9" x 11'1" |
| Bedroom 3 | 3480 x 2808 | 11'5" x 9'2" |
| Bedroom 4 | 3160 x 3164 | 10'4" x 10'4" |
| Bedroom 5 | 2031 x 3176 | 6'7" x 10'5" |
| Bathroom | 2000 x 2588 | 6'5" x 8'4" |

☒ Depicts integrated appliance W Wardrobe



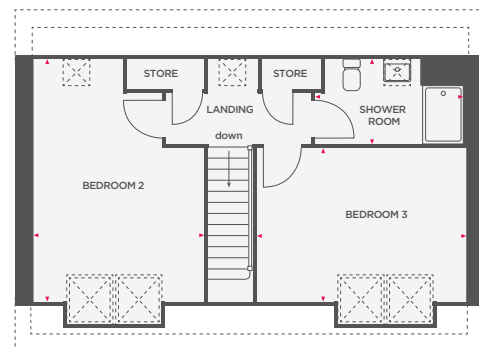
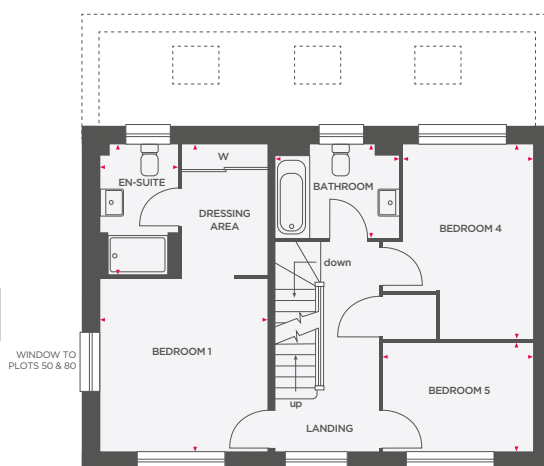
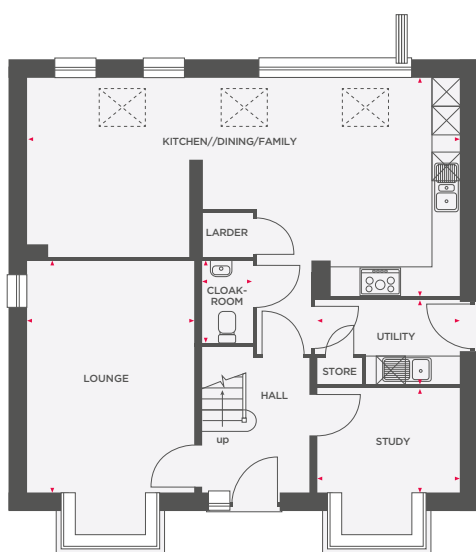
Wain Homes abides by the New Homes Quality Code, an independent industry code introduced to champion quality new homes and better consumer outcomes. Dimensions shown are internal finished dimensions which may vary as each home is built individually and the precise internal finishes may not always be the same. Please be aware that window and door positions could vary due to plot orientation. It is essential to view the working drawings with our Sales Executive for plot specific detail. Enquire for further information. Wain Homes Policy is continuous product and specification development. Every effort has been made to ensure the accuracy of the information provided in this leaflet at the date of publication but it may be subject to change without notice. Please consult with our Sales Executive to obtain the current specification. You should take appropriate steps to verify any information upon which you wish to rely. The sizes indicated are not intended to be used for carpet sizes, appliance spaces or items of furniture. Elevational treatments may vary to those shown. These particulars are intended for guidance only and their accuracy is not guaranteed. They do not constitute a contract, part of a contract or warranty. (April 2025)

Wain
HOMES



THE SNOWBERRY


5 BEDROOM DETACHED HOME



| | | |
|----------------|-------------|---------------|
| Lounge | 3450 x 4763 | 11'3" x 16'7" |
| Kitchen/Family | 8898 x 4513 | 29'2" x 14'9" |
| Utility | 3012 x 1709 | 9'8" x 5'6" |
| Study | 2950 x 2163 | 9'8" x 7'1" |
| Cloakroom | 1675 x 1013 | 5'4" x 3'3" |

| | | |
|-----------|-------------|----------------|
| Bedroom 1 | 3450 x 3562 | 11'3" x 11'8" |
| En-Suite | 2659 x 1562 | 8'7" x 5'1" |
| Bedroom 4 | 2697 x 3960 | 8'10" x 12'11" |
| Bedroom 5 | 3112 x 2262 | 10'2" x 7'5" |
| Bathroom | 2512 x 1915 | 8'2" x 6'2" |

| | | |
|-------------|-------------|---------------|
| Bedroom 2 | 3512 x 4955 | 11'6" x 16'3" |
| Bedroom 3 | 4302 x 3129 | 14'1" x 10'3" |
| Shower Room | 1738 x 3013 | 5'7" x 9'8" |

 Depicts integrated appliance W Wardrobe



Wain Homes abides by the New Homes Quality Code, an independent industry code introduced to champion quality new homes and better consumer outcomes. Dimensions shown are internal finished dimensions which may vary as each home is built individually and the precise internal finishes may not always be the same. Please be aware that window and door positions could vary due to plot orientation. It is essential to view the working drawings with our Sales Executive for plot specific detail. Enquire for further information. Wain Homes Policy is continuous product and specification development. Every effort has been made to ensure the accuracy of the information provided in this leaflet at the date of publication but it may be subject to change without notice. Please consult with our Sales Executive to obtain the current specification. You should take appropriate steps to verify any information upon which you wish to rely. The sizes indicated are not intended to be used for carpet sizes, appliance spaces or items of furniture. Elevational treatments may vary to those shown. These particulars are intended for guidance only and their accuracy is not guaranteed. They do not constitute a contract, part of a contract or warranty. (April 2025)

