

THE KINKELL

3-Bedroom Semi Detached Villa



Muir
HOMES

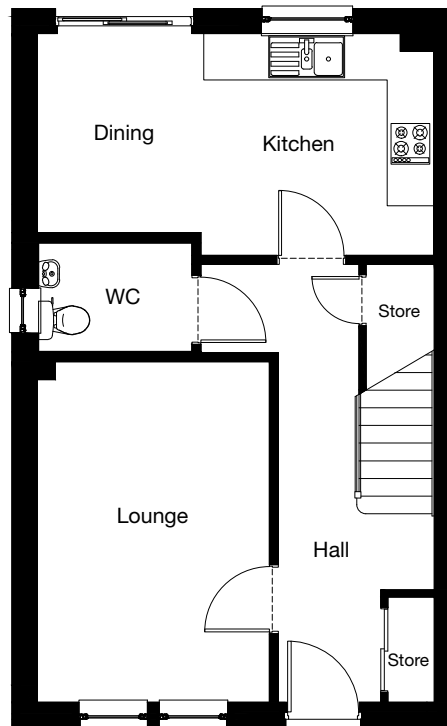
The details contained on this floor plan has been prepared for the convenience of intending purchasers. The information is for guidance only. The Company reserves the right to amend or vary specification. Nothing in this brochure shall constitute or form any part of a contract.

All photographs and illustrations on this insert are for illustrative purposes only. Muir Homes, June 2019.

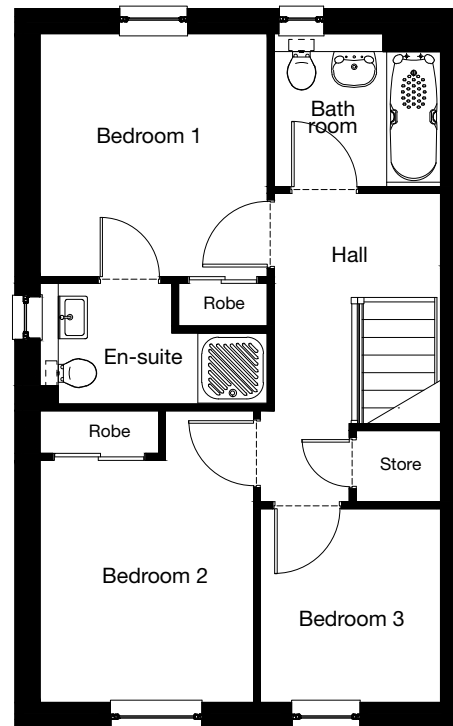
THE KINKELL

3-Bedroom Semi Detached Villa

GROUND FLOOR



FIRST FLOOR



GROUND FLOOR

Lounge	3.00 x 4.40m	9'10" x 14'5"
Kitchen	2.97 x 2.87m	9'9" x 9'5"
Dining	2.15 x 2.57m	7'1" x 8'5"
WC	1.98 x 1.40m	6'6" x 4'7"

FIRST FLOOR

Bedroom 1	2.94 x 3.14m	9'8" x 10'3"
En-suite	1.70 x 1.56m	5'7" x 5'1"
Bedroom 2	2.76 x 3.77m	9'1" x 12'4"
Bedroom 3	2.33 x 2.50m	7'8" x 8'3"
Bathroom	2.15 x 1.97m	7'0" x 6'6"

The details contained on this floor plan has been prepared for the convenience of intending purchasers. The information is for guidance only. The Company reserves the right to amend or vary specification. Nothing in this brochure shall constitute or form any part of a contract.

All photographs and illustrations on this insert are for illustrative purposes only. Muir Homes, June 2019.

Muir
HOMES