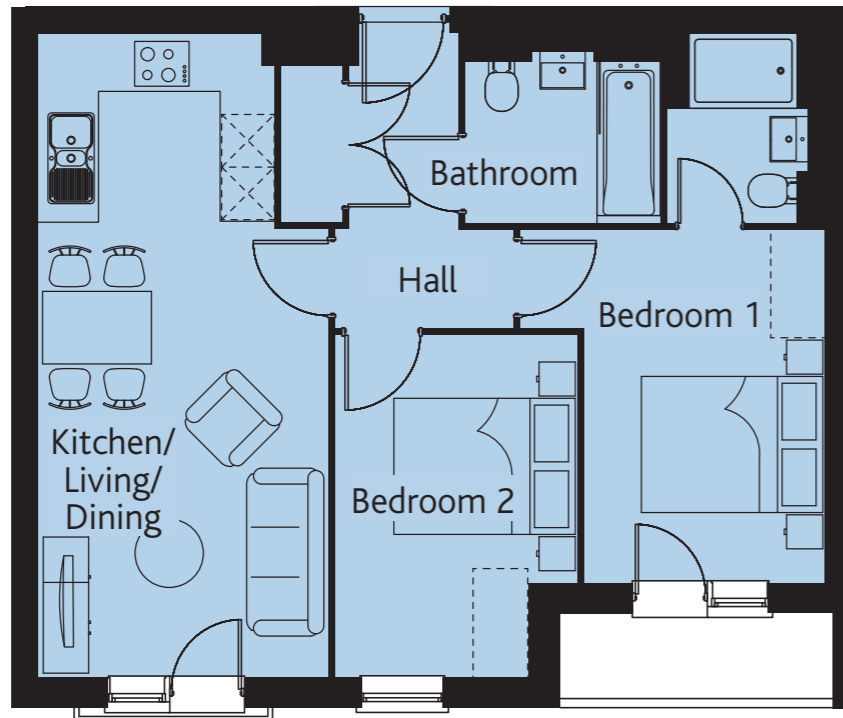


Plots 97, 110 & 122



## THE LONGFORD

Kitchen/ Living/ Dining	23'4" x 10'5"	7.11 x 3.19 m
Bedroom 1	11'0" x 12'10"	3.35 x 3.91 m
En-suite	6'9" x 5'1"	2.07 x 1.56 m
Bedroom 2	12'5" x 8'10"	3.78 x 2.70 m
Bathroom	7'2" x 6'3"	2.18 x 1.91 m

**KEY**  Electric hob. Please see Sales Consultant for further details.

Customers should note this illustration is an example of the Longford apartment type. Please refer to your Sales Consultant for details of any elevational differences. All dimensions indicated are approximate. The specifications will vary from site to site and plot to plot. Detailed plans and specifications are available for inspection for each plot at our Sales Centre during working hours and customers must check their individual specifications prior to making a reservation. Please note, steel frame apartment types will benefit from a slight increase to some room sizes.