

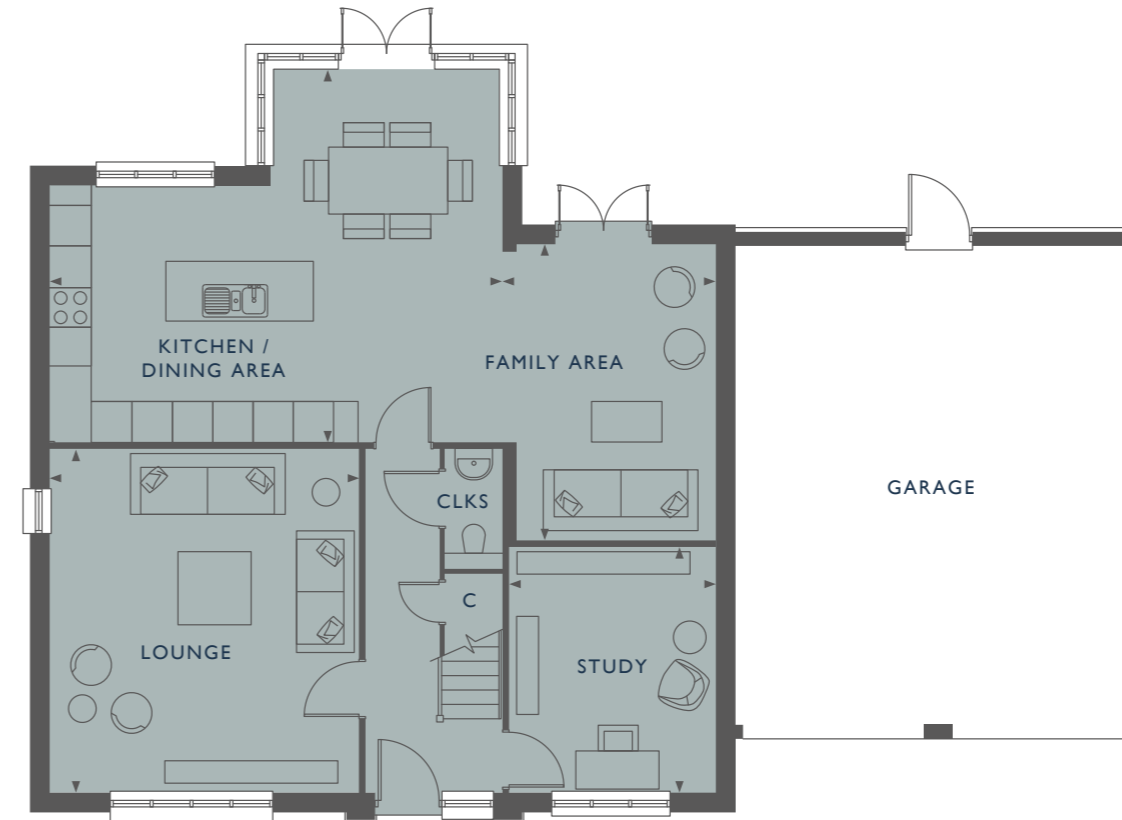


Computer generated image is indicative only.

The Sage 4 bedroom detached home 2005 sq ft

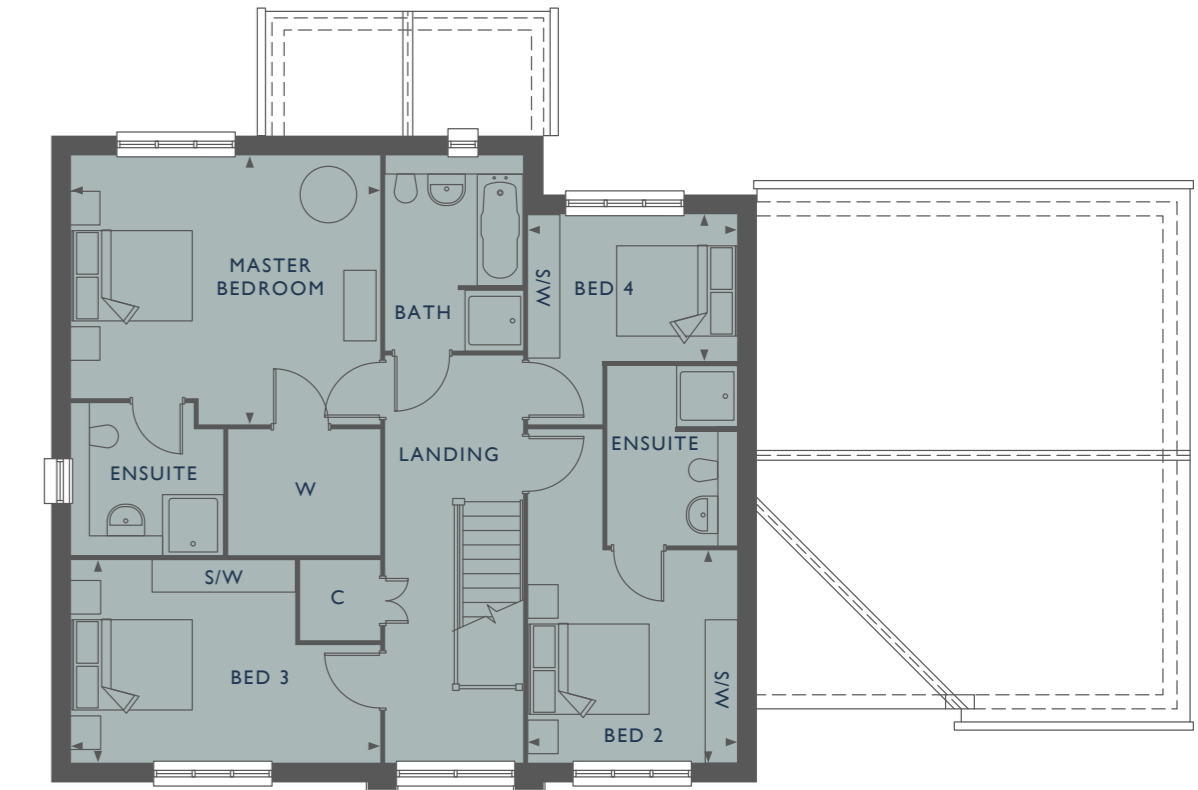
The Sage

PLOT 5



Ground Floor

LOUNGE	5.21m x 4.68m / 17'0" x 15'3"
KITCHEN/DINING AREA	7.11m x 5.73m / 23'3" x 18'8"
FAMILY AREA	4.48m x 3.02m / 14'7" x 9'9"
STUDY	3.71m x 3.11m / 12'1" x 10'2"
GARAGE	7.30m x 6.19m / 23'9" x 20'3"



First Floor

MASTER BEDROOM	4.58m x 4.06m / 15'0" x 13'3"
BEDROOM 2	5.08m x 3.14m / 16'6" x 10'3"
BEDROOM 3	4.59m x 3.03m / 15'0" x 9'9"
BEDROOM 4	5.05m x 3.15m / 16'5" x 10'3"

Details may vary from plot to plot. Dimensions are approximate and should not be used for furniture space, appliance space or carpet sizes. Please ask for details of your chosen plot. The contents of this document do not form or constitute a warranty or represent part of any contract. Please note: to increase legibility these plans have been sized to fit the page. As a result each plan may be a different scale to others within this document. S/W - Space for wardrobe. W - Wardrobe (only provided to Master Bedroom). C - Cupboard.

