

Ground Floor

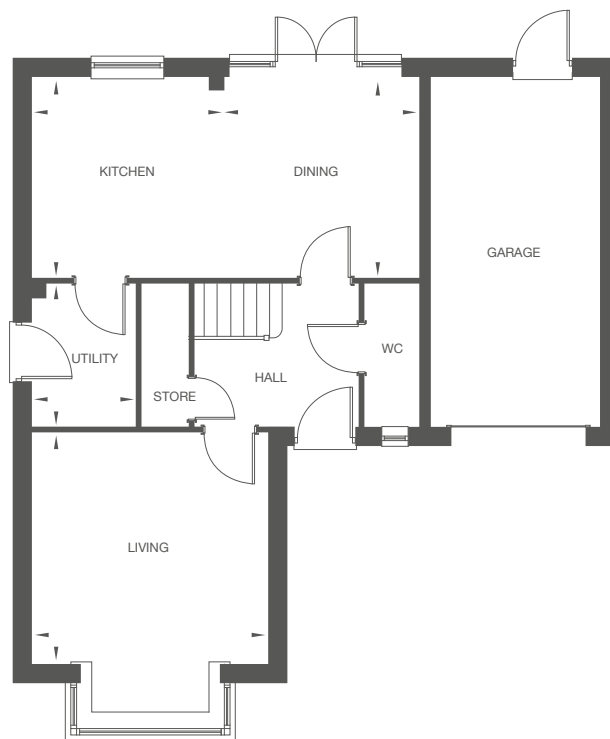
Living	4.02m x 3.91m 13' 2" x 12' 10"
Kitchen	3.30m x 3.39m 10' 10" x 11' 1"
Dining	3.30m x 3.90m 10' 10" x 11' 1"
Utility	2.40m x 1.75m 7' 10" x 5' 9"

First Floor

Bedroom 1	4.02m x 3.95m 13' 2" x 12' 11"
En Suite	1.75m x 2.42m 5' 9" x 7' 11"
Bedroom 2	3.19m x 3.41m 10' 6" x 11' 2"
Bedroom 3	3.07m x 3.24m 10' 1" x 10' 8"
Bedroom 4	2.76m x 3.33m 9' 1" x 10' 11"
Bathroom	2.20m x 2.00m 7' 3" x 6' 7"

Total Area = 129.60m² 1395 ft²

Ground Floor



First Floor

