

# No.2

## 3 Bedroom Detached Home

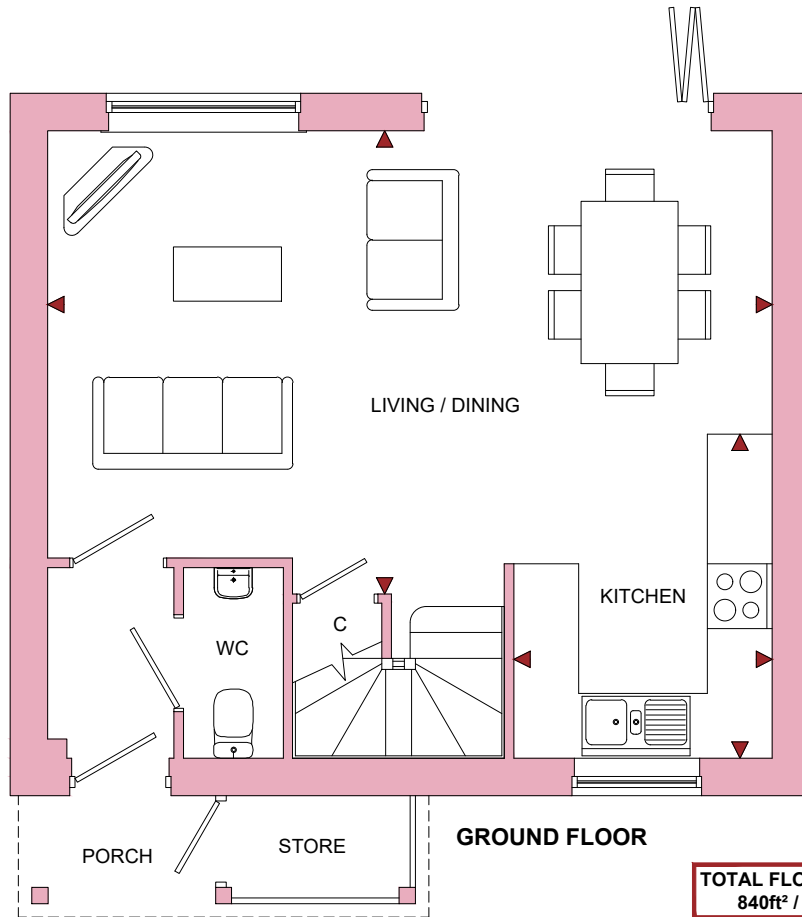


This CGI is an indicative representation of the external finish of this house type on one of the properties on this development. The final appearance of each property may need to be altered during the construction process, particularly when dealing with ground levels. Our sales representative will be happy to discuss the external finish on any specific plot with you.

# No.2

## 3 Bedroom Detached Home

| ROOM            | IMPERIAL / "    | METRIC / mm   |
|-----------------|-----------------|---------------|
| Living / Dining | 22' 0" x 14' 1" | 6710 x 4287mm |
| Kitchen         | 7' 10" x 9' 10" | 2392 x 3000mm |

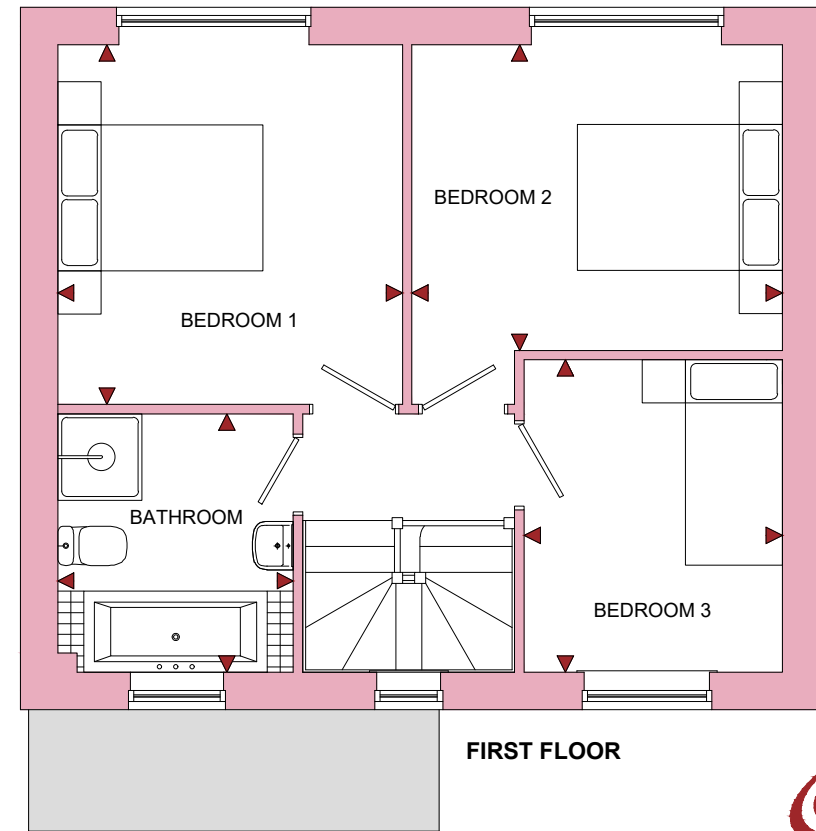


**TOTAL FLOOR AREA**  
840ft<sup>2</sup> / 78m<sup>2</sup>

# Elver Close

## Minsterworth, Gloucestershire, GL2 8JG

| ROOM      | IMPERIAL / "     | METRIC / mm   |
|-----------|------------------|---------------|
| Bedroom 1 | 10' 6" x 10' 11" | 3192 x 3329mm |
| Bedroom 2 | 11' 3" x 9' 4"   | 3430 x 2830mm |
| Bedroom 3 | 7' 10" x 9' 6"   | 2393 x 2893mm |
| Bathroom  | 7' 2" x 7' 10"   | 2182 x 2393mm |



[www.bellhomes.com](http://www.bellhomes.com)

We strive to make each home and development as varied and interesting as possible. Therefore the above is for illustration purposes only and individual properties may vary. Please ask for details of specific properties. Every care has been taken with the preparation of this information, which has been produced for your guidance only and does not form part of a contract. The Plans are NOT TO SCALE, and may vary on site. Please do not use this information for purchase of furnishings and furniture.

**bellhomes**  
the name that stands for quality homes