



GALLOWAY GRANGE

CHELFORD

Dixon Drive, Chelford, Macclesfield SK11 9AX

-  **The Wilford**
2 bedroom home
 -  **The Archford**
3 bedroom home
 -  **The Hadley**
3 bedroom home
 -  **The Kennett**
3 bedroom home
 -  **The Meriden**
4 bedroom home
 -  **The Herford**
4 bedroom home
 -  **The Bradgate**
4 bedroom home
 -  **The Holden**
4 bedroom home
 -  **The Winstone**
4 bedroom home
 -  **The Shelbourne**
4 bedroom home
 -  **The Mitchell**
4 bedroom home
- AFFORDABLE HOMES**
-  **The Stevenson**
2 bedroom apartments
 -  **The Chichester**
2 bedroom apartments



THE ARCHFORD

THREE BEDROOM TERRACED HOME



Individual plots may vary, please speak to the Sales Adviser



This family home has been carefully designed throughout – from the front bay window that brings natural light streaming into the airy lounge, to the kitchen with dining area that leads to the rear garden

via French doors. Upstairs the master bedroom features an en suite while the rest of the family can enjoy a further double bedroom, a single bedroom and a family bathroom.



DAVID WILSON HOMES

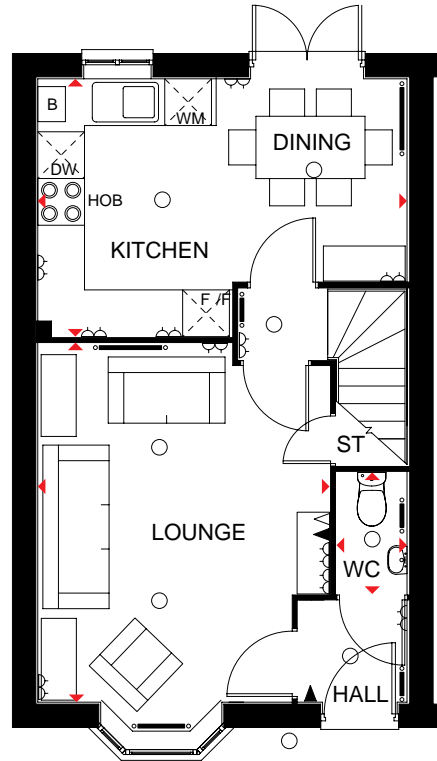
WHERE QUALITY LIVES

THE ARCHFORD

THREE BEDROOM TERRACED HOME

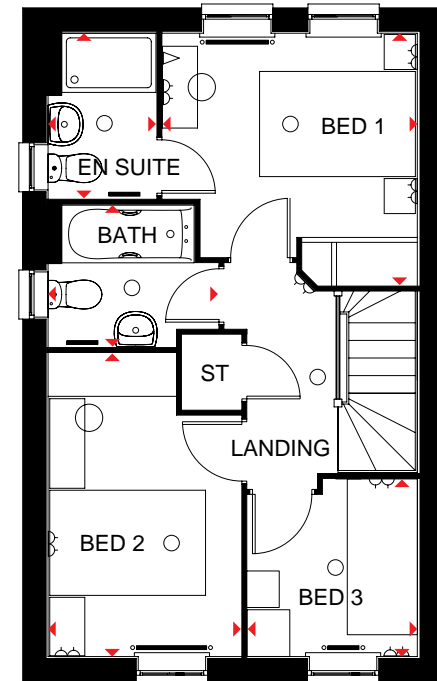
Key

- Light fitting
- ◁ Telephone outlet point
- Radiator
- B Boiler
- f/f Fridge/freezer space
- ◁ Electric socket
- ◁ T.V. aerial socket
- Towel radiator
- ST Store
- wm Washing machine space
- ◁ dw Dishwasher space
- ◁ Dimension location



Ground Floor

Lounge	4604 x 3746 mm	15'1" x 12'3"
Kitchen/Dining	4740 x 3310 mm	15'7" x 10'10"
WC	1561 x 905 mm	5'1" x 3'0"



First Floor

Bed 1	3234 x 3266 mm	10'7" x 10'9"
En suite	1385 x 2119 mm	4'7" x 6'11"
Bed 2	2475 x 3891 mm	8'1" x 12'9"
Bed 3	2286 x 2176 mm	7'6" x 7'2"
Bath	1815 x 2181 mm	5'11" x 7'2"

Floor plans are intended to give a general indication of the proposed floor layout only. Dimensions are accurate to within + or - 50mm but should not be used for carpet or flooring sizes, appliance spaces or items of furniture. Please ask our Sales Adviser for details of the treatments specified for individual plots. Individual features such as windows, brick and other materials' colours may vary, as may drainage, heating and electrical layouts. Images, photographs and dimensions are not intended to form part of any contract or warranty unless specifically incorporated in writing into the contract. P382-EB5DS19/309440

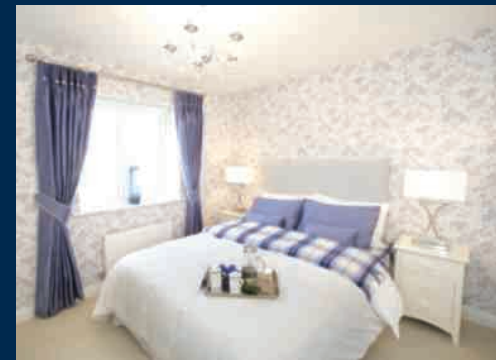


THE KENNETT

THREE BEDROOM TERRACED HOME



Individual plots may vary, please speak to the Sales Adviser



The Kennett is the perfect choice for couples and young families with three spacious bedrooms set over three floors. On the ground floor you will find a generous kitchen, diner with French doors to the rear, spacious lounge with a bay window and a cloakroom.

Up one flight of stairs there are two double bedrooms and the family bathroom, with the light, bright master suite with en suite shower room at the top of the house.



DAVID WILSON HOMES

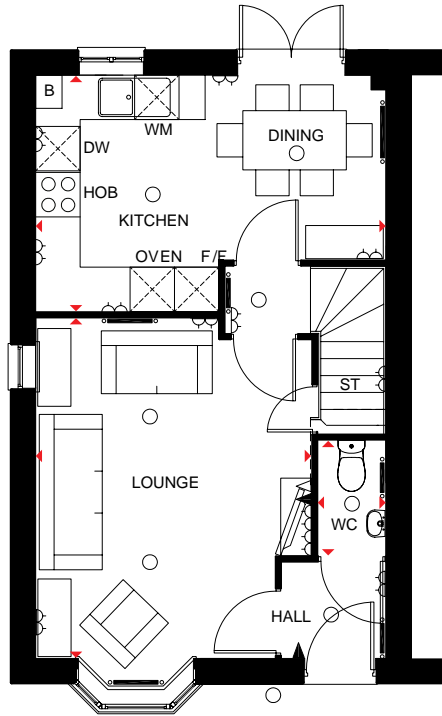
WHERE QUALITY LIVES

THE KENNETT

THREE BEDROOM TERRACED HOME

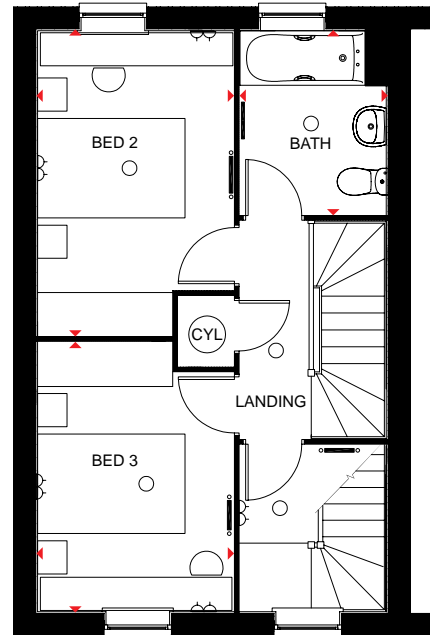
Key

○ Light fitting	◀ Telephone outlet point	— Radiator	B Boiler	CYL Cylinder	wm Washing machine space	td Tumble dryer space
◻ Electric socket	◁ T.V. aerial socket	— Towel radiator	ST Store	f/f Fridge/freezer space	dw Dishwasher space	◄ Dimension location



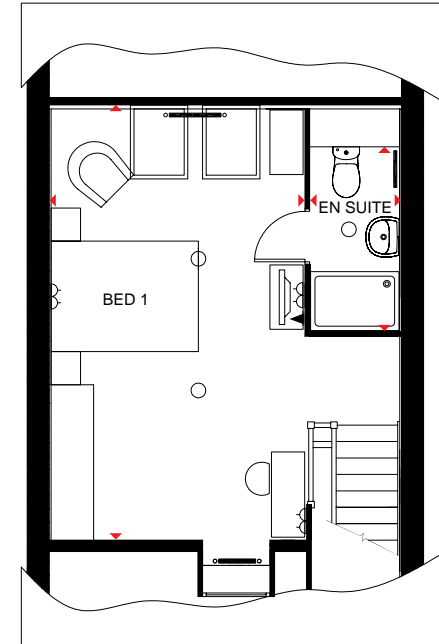
Ground Floor

Lounge	4604 x 3729 mm	15'1" x 12'2"
Kitchen/Dining	4733 x 3197 mm	15'6" x 10'5"
WC	1561 x 915 mm	5'1" x 3'0"



First Floor

Bed 2	4116 x 2659 mm	13'6" x 8'8"
Bed 3	3658 x 2659 mm	12'0" x 8'8"
Bath	2498 x 1985 mm	8'2" x 6'6"



Second Floor

Bed 1	5830 x 3434* mm	19'1" * x 11'3"
En suite	1210 x 2497 * mm	3'11" x 8'2"

* Overall floor dimension includes lowered ceiling area

Computer generated images are for illustrative purposes only and individual features often vary from one plot to another. Floor plans are indicative only to give a general indication of the proposed development and floor layout. The dimensions are accurate to within + or -50mm. Dimensions should not be used for carpet sizes, appliance spaces or items of furniture. Please ask our Sales Advisers for details of the treatments specified for individual plots. Computer generated images are for general guidance only and are not intended to form part of any contract or warranty. Furniture shown is for illustrative purposes only. T310-E-5D500/T310-I-5D500/264920/FEB2015



THE HADLEY

THREE BEDROOM END-TERRACED HOME



Individual plots may vary, please speak to the Sales Adviser



The end-terraced Hadley is designed very much for modern living, with its open-plan kitchen, dining and family areas providing flexible space. French doors access the rear garden and make the whole room bright and airy, while a

separate utility room adds a practical note. The spacious dual-aspect lounge meanwhile provides the perfect place to relax. Upstairs are two double bedrooms – the large master with en suite – a single bedroom and the family bathroom.



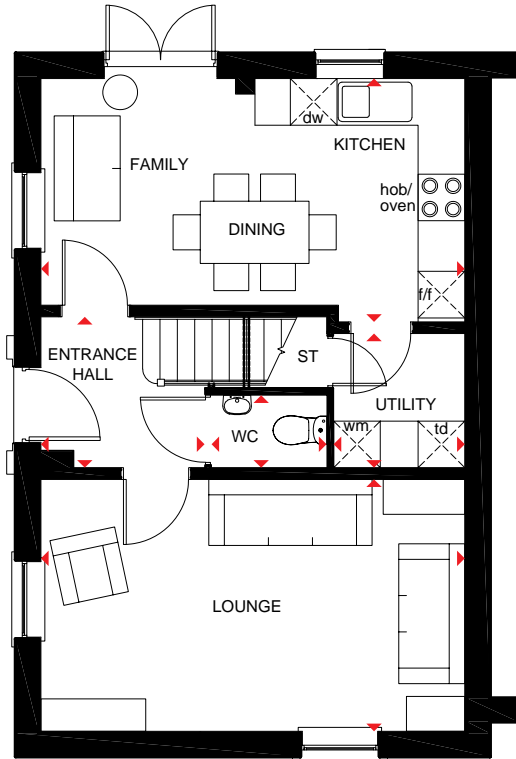
DAVID WILSON HOMES
WHERE QUALITY LIVES

THE HADLEY

THREE BEDROOM END-TERRACED HOME

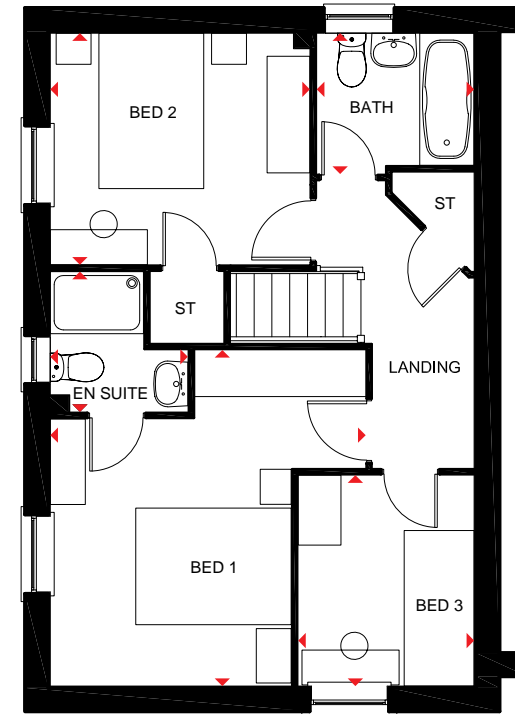
Key

ST	Store	dw	Dishwasher space
f/f	Fridge/freezer space	td	Tumble dryer space
wm	Washing machine space	◀▶	Dimension location



Ground Floor

Lounge	5455 x 3242 mm	17'11" x 10'8"
Kitchen/Family /Dining	5455 x 3131 mm	17'11" x 10'3"
Utility	1727 x 1687 mm	5'8" x 5'6"
WC	1485 x 932 mm	4'10" x 3'1"
Entrance Hall	2105 x 1941 mm	6'10" x 6'4"



First Floor

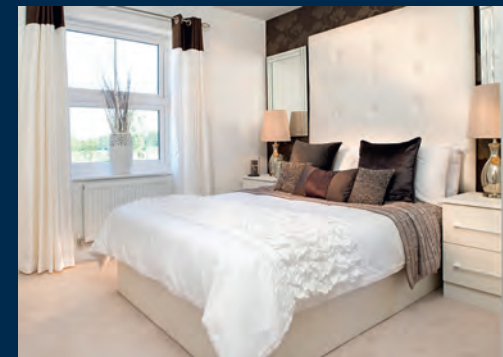
Bed 1	4324 x 4058 mm	14'2" x 13'3"
En Suite	1806 x 1771 mm	5'11" x 5'9"
Bed 2	3341 x 2978 mm	11'0" x 9'9"
Bed 3	2713 x 2265 mm	8'11" x 7'5"
Bath	2025 x 1811 mm	6'8" x 6'0"

All images used are for illustrative purposes. These and the dimensions given are illustrative for this house type and individual properties may differ. Please check with your Sales Adviser in respect of individual properties. We give maximum dimensions within each room which includes areas of fixtures and fittings including fitted furniture. These dimensions should not be used for carpet or flooring sizes, appliance spaces or items of furniture. All images, photographs and dimensions are not intended to be relied upon for, nor to form part of, any contract unless specifically incorporated in writing into the contract. DWH_2017_P341-E-7DS00 / SP342401



THE MERIDEN

FOUR BEDROOM DETACHED HOME



Individual plots may vary, please speak to the Sales Adviser

The Meriden is a bright place to call home with its attractive bay-fronted lounge and a light-filled glazed bay in the kitchen/dining area leading to the garden. A family space in the kitchen increases flexibility for

living and entertaining, while a separate utility room adds practicality and an integral garage provides extra security. Upstairs are four double bedrooms, the generous master with en suite, and a family bathroom with shower.



DAVID WILSON HOMES

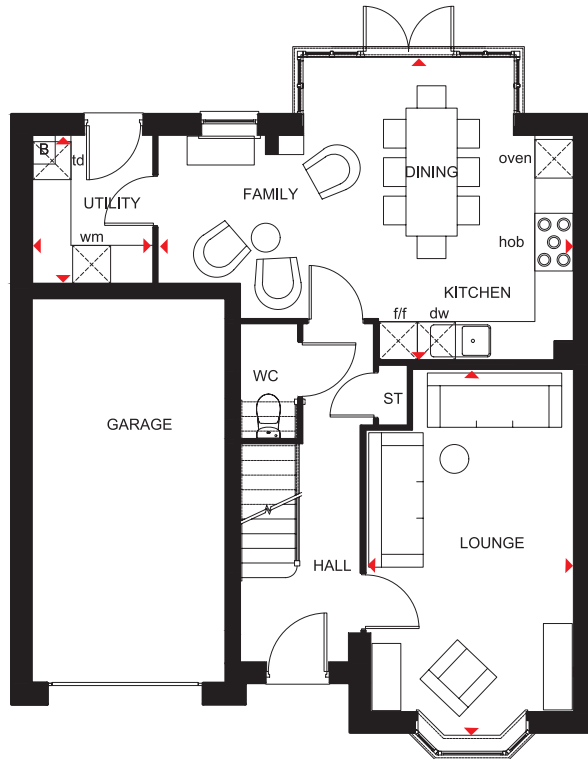
WHERE QUALITY LIVES

THE MERIDEN

FOUR BEDROOM DETACHED HOME

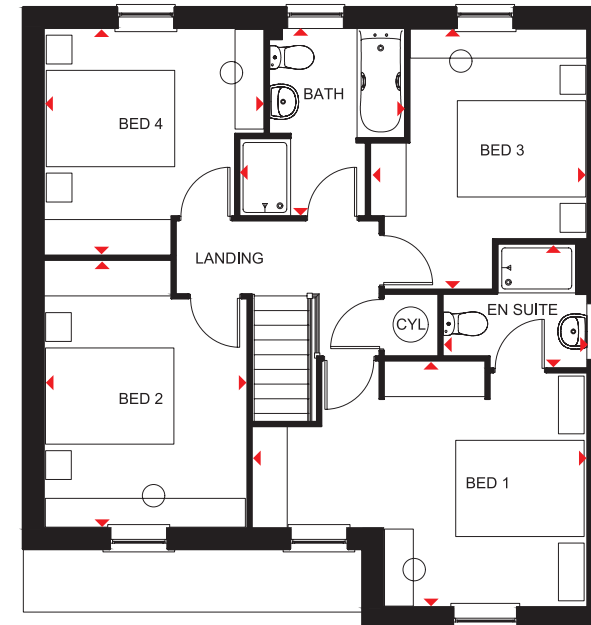
Key

B	Boiler	f/f	Fridge/freezer space	td	Tumble dryer space
ST	Store	wm	Washing machine space	◀▶	Dimension location
CYL	Cylinder	dw	Dishwasher space		



Ground Floor

Lounge	5767 x 3235 mm	18'11" x 10'7"
Kitchen/Family/ Dining	6486 x 4735 mm	21'3" x 15'6"
Utility	2305 x 1877 mm	7'7" x 6'2"
WC	1786 x 882 mm	5'10" x 2'11"



First Floor

Bedroom 1	5208 x 3822 mm	17'1" x 12'6"
En Suite	2235 x 1923 mm	7'4" x 6'4"
Bedroom 2	4161 x 3155 mm	13'8" x 10'4"
Bedroom 3	4056 x 3365 mm	13'3" x 11'0"
Bedroom 4	3527 x 3423 mm	11'7" x 11'3"
Bathroom	2913 x 2100 mm	9'6" x 6'11"

All images used are for illustrative purposes. These and the dimensions given are illustrative for this house type and individual properties may differ. Please check with your Sales Adviser in respect of individual properties. We give maximum dimensions within each room which includes areas of fixtures and fittings including fitted furniture. These dimensions should not be used for carpet or flooring sizes, appliance spaces or items of furniture. All images, photographs and dimensions are not intended to be relied upon for, nor to form part of, any contract unless specifically incorporated in writing into the contract. H429---7DS00 / SP375239

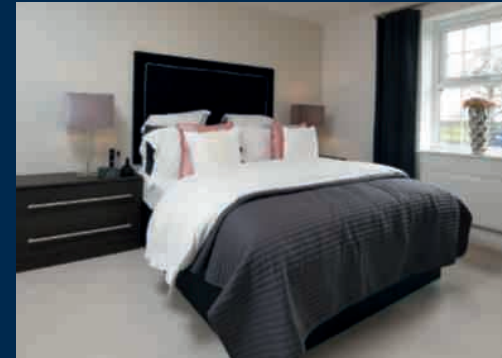


THE HOLDEN

FOUR BEDROOM HOME



Individual plots may vary, please speak to the Sales Adviser



This stylish four bedroom detached home has no shortage of space and light. The bright, modern kitchen has been designed with integrated dining and family areas, full-height glazed bay with French doors leading to the garden and an adjoining utility room – making it the true heart of the home. A generously proportioned

lounge with elegant bay window provides a perfect place to relax while a study offers a handy work space. Upstairs a large master bedroom with en suite shower room is located at the front of the house and there are two further double bedrooms, a single bedroom and a family bathroom with bath and separate shower.



DAVID WILSON HOMES

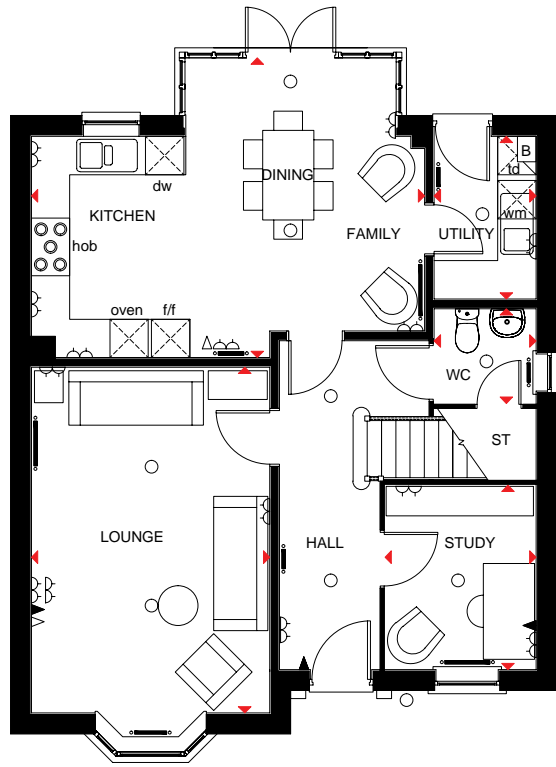
WHERE QUALITY LIVES

THE HOLDEN

FOUR BEDROOM HOME

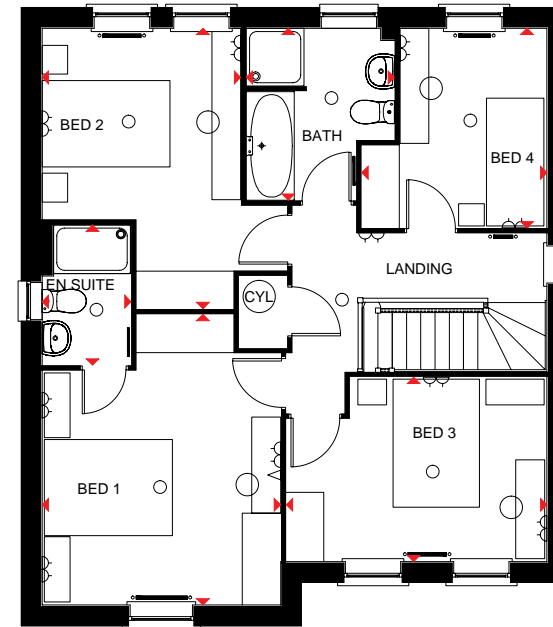
Key

- Light fitting
- ◀ Telephone outlet point
- Radiator
- B Boiler
- CYL Cylinder
- wm Washing machine space
- td Tumble dryer space
- ◁ Electric socket
- ◁ T.V. aerial socket
- Towel radiator
- ST Store
- f/f Fridge/freezer space
- dw Dishwasher space
- ◀▶ Dimension Location



Ground Floor

Lounge	5405 x 3728 mm	17'9" x 12'3"
Kitchen/Family/Dining	6147 x 4685 mm	20'2" x 15'4"
Study	2886 x 2361 mm	9'6" x 7'9"
Utility	2545 x 1593 mm	8'4" x 5'3"
WC	1593 x 1481 mm	5'3" x 4'10"



First Floor

Bedroom 1	4543 x 3728 mm	14'11" x 12'3"
En suite	2190 x 1390 mm	7'2" x 4'7"
Bedroom 2	4384 x 3103 mm	14'5" x 10'2"
Bedroom 3	4073 x 2886 mm	13'4" x 9'6"
Bedroom 4	3120 x 2893 mm	10'3" x 9'6"
Bathroom	2689 x 2316 mm	8'10" x 7'7"

Floor plans are intended to give a general indication of the proposed floor layout only. Dimensions are accurate to within + or - 50mm but should not be used for carpet or flooring sizes, appliance spaces or items of furniture. Please ask our Sales Adviser for details of the treatments specified for individual plots. Individual features such as windows, brick and other materials' colours may vary, as may drainage, heating and electrical layouts. Images, photographs and dimensions are not intended to form part of any contract or warranty unless specifically incorporated in writing into the contract. H469--X5DS23/SP302248



THE BRADGATE

FOUR BEDROOM DETACHED HOME



Individual plots may vary, please speak to the Sales Adviser



This beautiful home has no shortage of space. The open-plan kitchen with dining area has plenty of room for the whole family and boasts a glazed bay that opens out onto the rear garden through French doors, while the airy sitting room benefits from

a feature bay window. Upstairs, the generous master bedroom benefits from an en suite shower room. The further three double bedrooms all share a stylish family bathroom.



DAVID WILSON HOMES

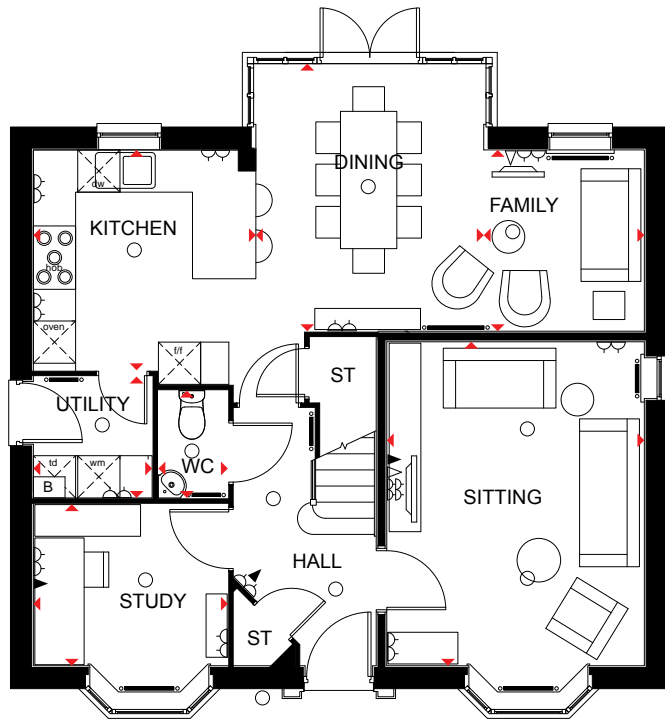
WHERE QUALITY LIVES

THE BRADGATE

FOUR BEDROOM DETACHED HOME

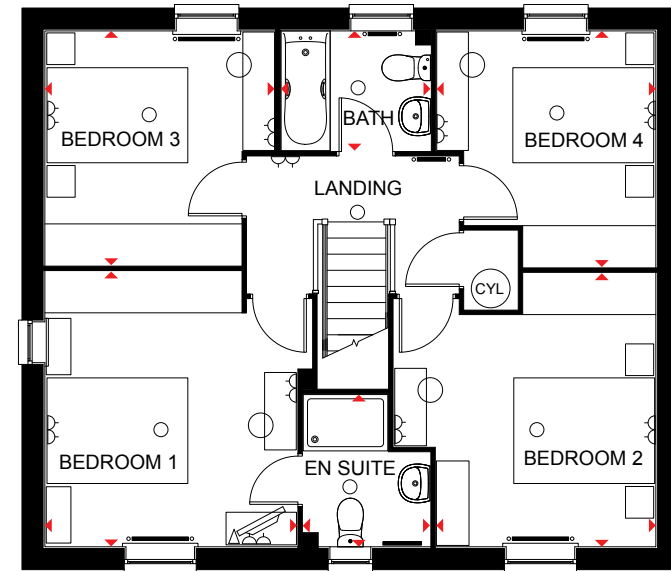
Key

- Light fitting
- ◀ Telephone outlet point
- Radiator
- B Boiler
- CYL Cylinder
- wm Washing machine space
- td Tumble dryer space
- ◁ Electric socket
- ◁ T.V. aerial socket
- Towel radiator
- ST Store
- f/f Fridge/freezer space
- dw Dishwasher space
- ◀▶ Dimension location



Ground Floor

Sitting	4602 x 3658 mm	15'1" x 12'0"
Kitchen	3160 x 3130 mm	10'4" x 10'3"
Dining	3800 x 3236 mm	12'5" x 10'7"
Family	2575 x 2281 mm	8'5" x 7'5"
Study	2762 x 2295 mm	9'0" x 7'6"
Utility	1687 x 1724 mm	5'6" x 5'7"
WC	1524 x 986 mm	5'0" x 3'2"



First Floor

Bedroom 1	3581 x 3904 mm	11'9" x 12'9"
En Suite	2162 x 1799 mm	7'1" x 5'10"
Bedroom 2	3119 x 3885 mm	10'2" x 12'9"
Bedroom 3	3328 x 3263 mm	10'11" x 10'8"
Bedroom 4	3112 x 3353 mm	10'2" x 11'0"
Bath	2124 x 1700 mm	6'11" x 5'7"

Floor plans are intended to give a general indication of the proposed floor layout only. Dimensions are accurate to within + or - 50mm but should not be used for carpet or flooring sizes, appliance spaces or items of furniture. Please ask our Sales Adviser for details of the treatments specified for individual plots. Individual features such as windows, brick and other materials' colours may vary, as may drainage, heating and electrical layouts. Images, photographs and dimensions are not intended to form part of any contract or warranty unless specifically incorporated in writing into the contract.

H417---B5 DS00/SP266399/0315

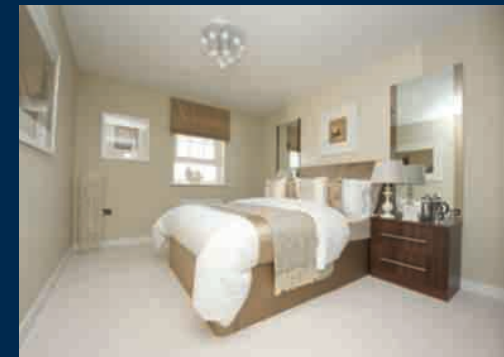


THE SHELBOURNE

FOUR BEDROOM DETACHED HOME



Individual plots may vary, please speak to the Sales Adviser



This stylishly designed home boasts a beautiful ground floor, featuring an airy kitchen with breakfast and large separate utility room and French doors leading to the rear garden. A separate dining room with its own set of French doors and a

comfortable bay fronted lounge are also presented downstairs. With just as much attention to detail, the first floor hosts four double bedrooms; the master with Juliet balcony, dressing area and full en suite, and a family bathroom with separate shower.



DAVID WILSON HOMES

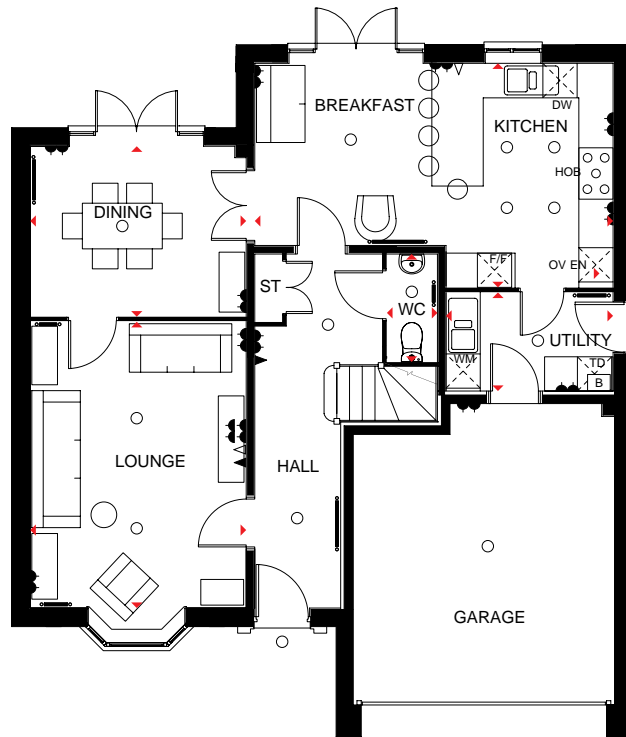
WHERE QUALITY LIVES

THE SHELBOURNE

FOUR BEDROOM DETACHED HOME

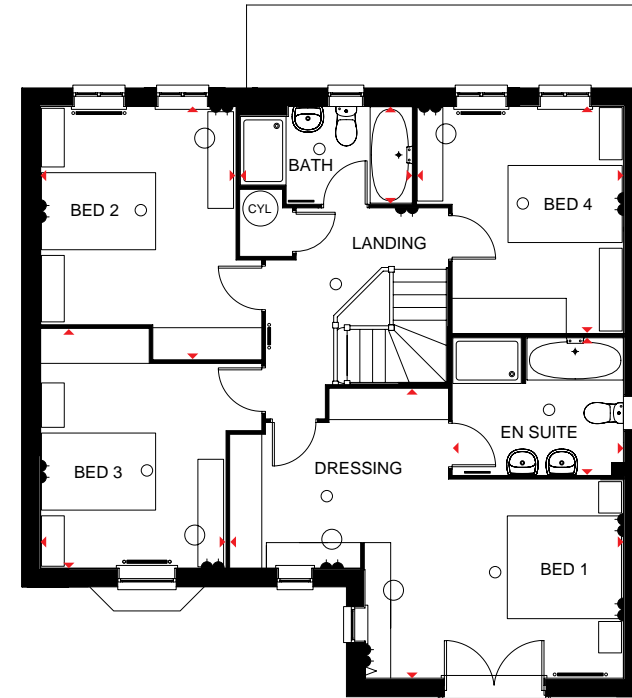
Key

- Light fitting
- ◀ Telephone outlet point
- Radiator
- B Boiler
- CYL Cylinder
- wm Washing machine space
- td Tumble dryer space
- ◀ Electric socket
- ◁ T.V. aerial socket
- Towel radiator
- ST Store
- f/f Fridge/freezer space
- dw Dishwasher space
- ◀▶ Dimension location



Ground Floor

Lounge	3783 x 5015 mm	12'5" x 16'5"
Kitchen/ Breakfast	6277 x 3925 mm	20'7" x 12'11"
Dining	3783 x 2986 mm	12'5" x 9'10"
Utility	2927 x 1727 mm	9'7" x 5'8"
WC	1890 x 885 mm	6'2" x 2'11"



First Floor

Bed 1/ Dressing	6885 x 5066 mm	22'7" x 16'7"
En suite	2988 x 2400 mm	9'10" x 7'10"
Bed 2	4425 x 3389 mm	14'6" x 11'1"
Bed 3	3236 x 4190 mm	10'7" x 13'9"
Bed 4	3942 x 3611 mm	12'11" x 11'10"
Bath	3010 x 1700 mm	9'11" x 5'7"

Computer generated images are for illustrative purposes only and individual features often vary from one plot to another. Floor plans are indicative only to give a general indication of the proposed development and floor layout. The dimensions are accurate to within + or -50mm. Dimensions should not be used for carpet sizes, appliance spaces or items of furniture. Please ask our Sales Advisers for details of the treatments specified for individual plots. Computer generated images are for general guidance only and are not intended to form part of any contract or warranty. Furniture shown is for illustrative purposes only. SP273257



THE WINSTONE

FOUR BEDROOM DETACHED HOME



Individual plots may vary, please speak to the Sales Adviser



Making superb use of its generous space, this beautiful detached house makes the ideal family home. On the ground floor, the generous entrance hall leads to the kitchen and breakfast room with family area. This room also features a glazed bay window that creates a smooth flow of space into the garden. A bay-fronted

dining room, a study and a lounge with French doors leading to the garden are also located downstairs. Upstairs, the master bedroom includes a dressing area and full en suite, accompanied by three further double bedrooms, the second bedroom with an en suite shower room, and a family bathroom.



DAVID WILSON HOMES

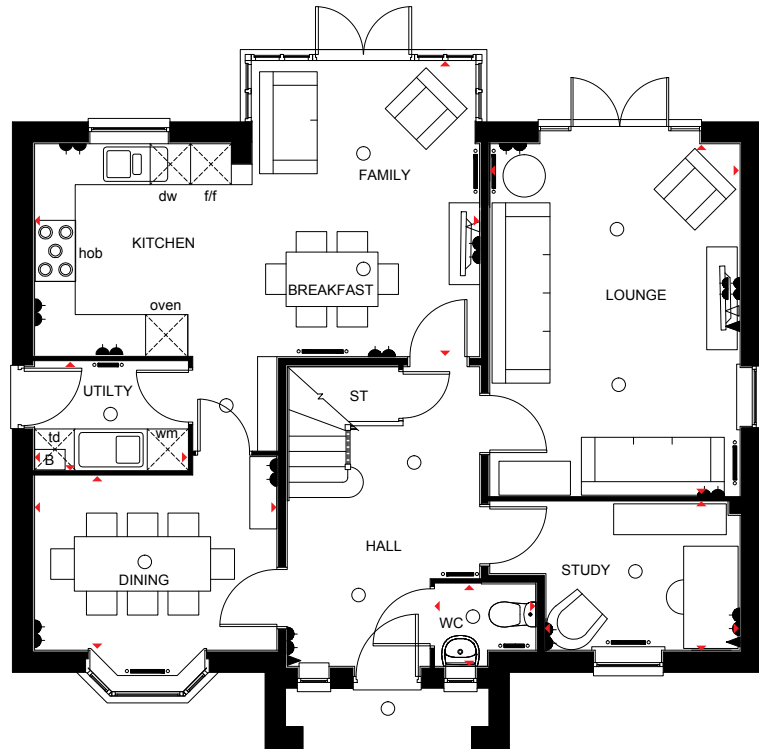
WHERE QUALITY LIVES

THE WINSTONE

FOUR BEDROOM DETACHED HOME

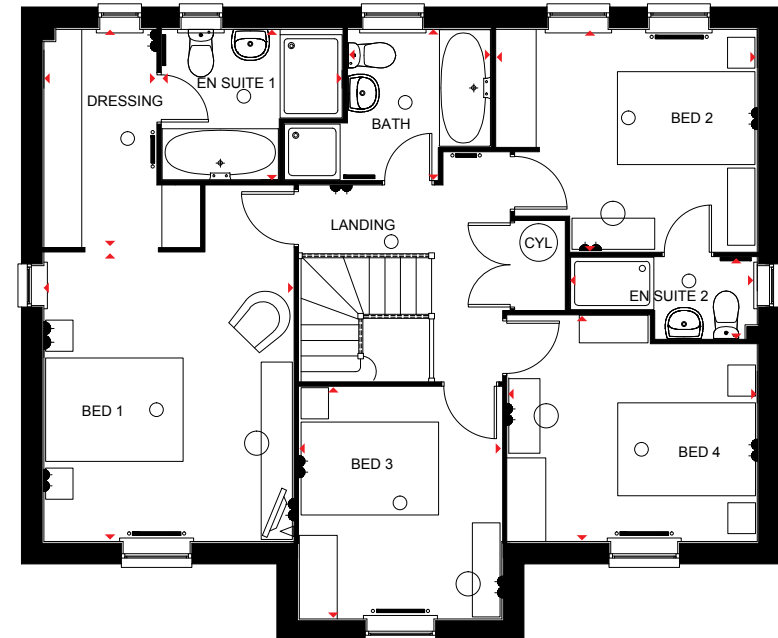
Key

- Light fitting
- ◀ Telephone outlet point
- Radiator
- B Boiler
- CYL Cylinder
- wm Washing machine space
- td Tumble dryer space
- ◀ Electric socket
- ◁ T.V. aerial socket
- Towel radiator
- ST Store
- f/f Fridge/freezer space
- dw Dishwasher space
- ◀▶ Dimension location



Ground Floor

Lounge	5171 x 3675 mm	17'0" x 12'1"
Kitchen/Family/Breakfast	6540 x 4350 mm	21'5" x 14'3"
Dining	3563 x 2561 mm	11'8" x 8'5"
Study	2850 x 2180 mm	9'4" x 7'2"
Utility	2250 x 1591 mm	7'5" x 5'3"
WC	1475 x 1210 mm	4'10" x 4'0"



First Floor

Bed 1	4196 x 3624 mm	13'9" x 11'11"
Dressing	3155 x 1630 mm	10'4" x 5'4"
En suite 1	2182 x 2615 mm	7'2" x 8'7"
Bed 2	3223 x 3788 mm	10'7" x 12'5"
En suite 2	1178 x 2710 mm	3'10" x 8'11"
Bed 3	3368 x 2940 mm	11'1" x 9'8"
Bed 4	3623 x 3280 mm	11'11" x 10'9"
Bath	2065 x 2182 mm	6'9" x 7'2"

Computer generated images are for illustrative purposes only and individual features often vary from one plot to another. Floor plans are indicative only to give a general indication of the proposed development and floor layout. The dimensions are accurate to within + or -50mm. Dimensions should not be used for carpet sizes, appliance spaces or items of furniture. Please ask our Sales Advisers for details of the treatments specified for individual plots. Computer generated images are for general guidance only and are not intended to form part of any contract or warranty. Furniture shown is for illustrative purposes only. H421---5DS15_SP273040

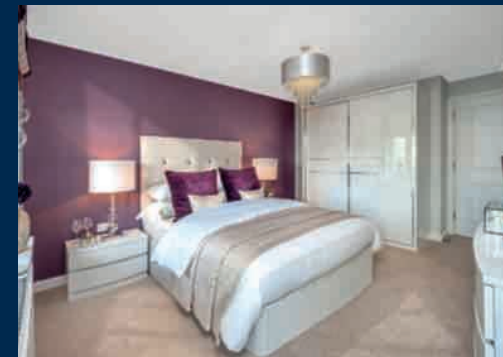


THE HERTFORD

FOUR BEDROOM DETACHED HOME



Individual plots may vary, please speak to the Sales Adviser



Designed over three floors, The Hertford is a spacious family home. A large open-plan dining area and kitchen – with separate utility – and a beautiful glazed walk-in bay with French doors leading to the garden, provide an abundance of flexible living space. Attractive bay windows in the dining area and the dual-

aspect lounge ensure this home offers a bright welcome. Two double bedrooms, the spacious master with en suite and dressing area, and the family bathroom are on the first floor. Upstairs are a further double bedroom, a single bedroom and a shower room.



DAVID WILSON HOMES

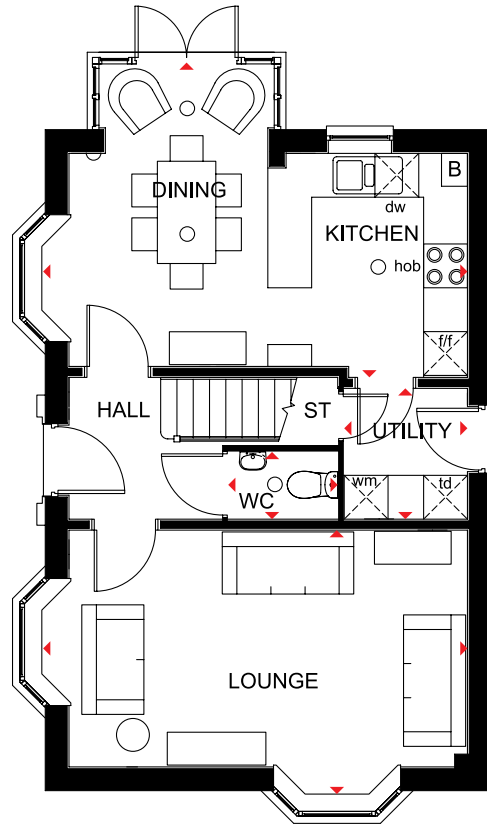
WHERE QUALITY LIVES

THE HERTFORD

FOUR BEDROOM DETACHED HOME

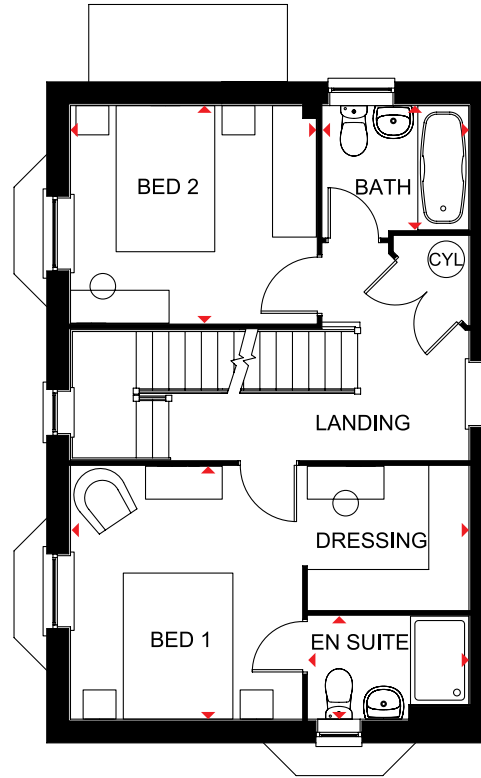
Key

B	Boiler	f/f	Fridge/freezer space	td	Tumble dryer space
CYL	Cylinder	wm	Washing machine space	◀▶	Dimension location
ST	Store	dw	Dishwasher space		



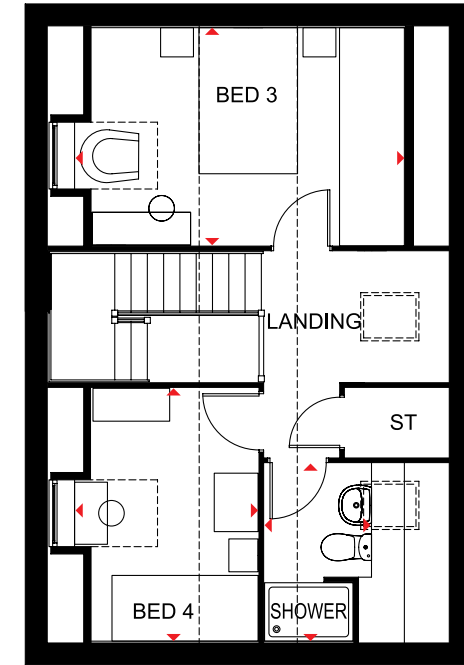
Ground Floor

Lounge	5852 x 3639 mm	19'2" x 11'11"
Kitchen/Dining	5852 x 4292 mm	19'2" x 14'1"
Utility	1791 x 1687 mm	5'11" x 5'6"
WC	1500 x 920 mm	4'11" x 3'0"



First Floor

Bed 1/Dressing	5455 x 3462 mm	17'11" x 11'4"
En suite	2200 x 1410 mm	7'3" x 4'8"
Bed 2	3366 x 2978 mm	11'1" x 9'9"
Bath	2000 x 1800 mm	6'7" x 5'11"



Second Floor

Bed 3	4540* x 2978 mm	14'10"* x 9'9"
Bed 4	3462 x 2537* mm	11'4" x 8'3"*
Shower room	2432 x 1464* mm	8'0" x 4'10"*

*Overall floor dimension includes lowered ceiling areas

All images used are for illustrative purposes only. Floor plans are intended to give a general indication of the proposed floor layout only. The dimensions are accurate to within + or - 50mm but should not be used for carpet or flooring sizes, appliance spaces or items of furniture. Please ask our Sales Adviser for details of the treatments specified for individual plots. Individual features such as windows, brick and other materials' colours may vary, as may drainage, heating and electrical layouts. All images, photographs and dimensions are not intended to form part of any contract or warranty unless specifically incorporated in writing into the contract. H470---5 DS09 / SP 344166

