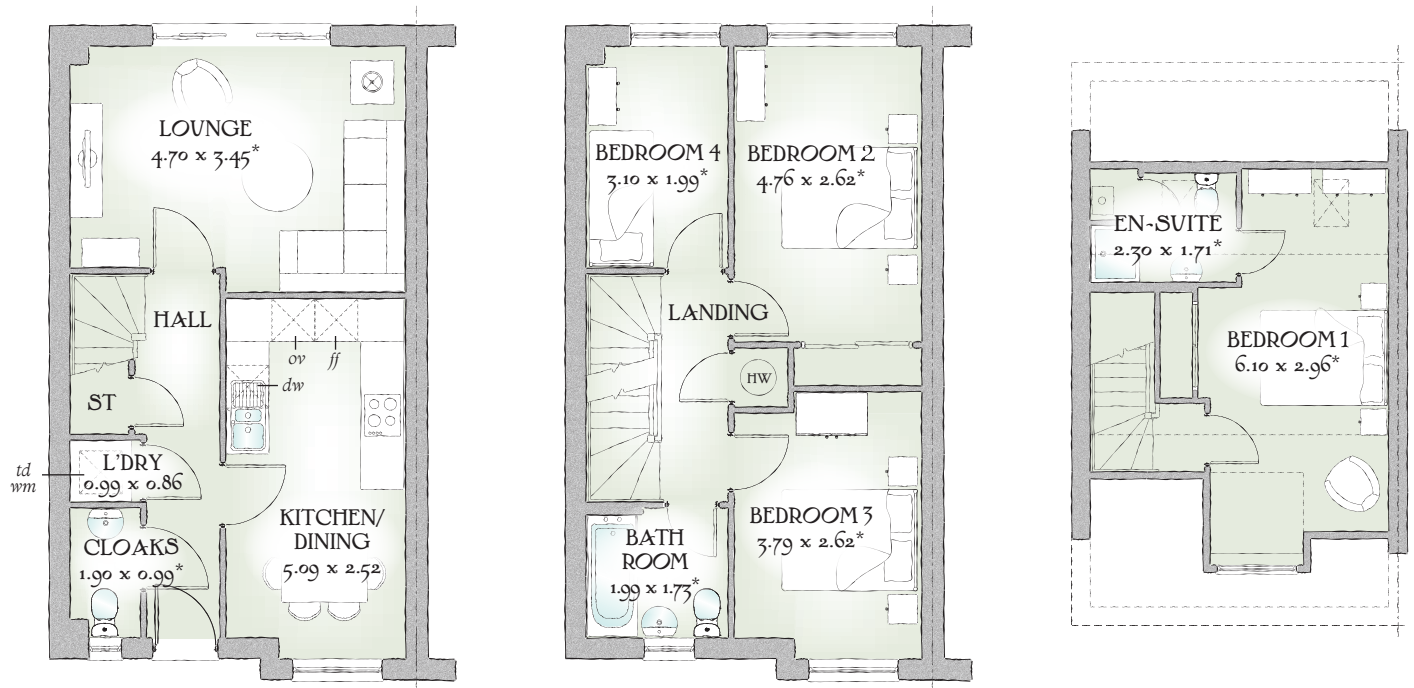




# Charlecote

FOUR BEDROOM HOME





The Charlecote is a well thought-out family townhouse; boasting a spacious Kitchen/ Dining area and Living Room on the ground floor, three bedrooms and family Bathroom on the first floor and the jewel to this home is the Master Bedroom suite on the second floor.

## FOUR BEDROOM HOME

### GROUND FLOOR

Lounge	15'5" x 11'4"	4.70 x 3.45 m*
Kitchen/ Dining	16'9" x 8'3"	5.09 x 2.52 m
Cloaks	6'3" x 3'3"	1.90 x 0.99 m*
Laundry	3'3" x 2'10"	0.99 x 0.89 m

### FIRST FLOOR

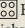
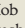
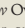
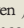
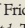
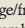
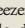
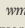
Bedroom 2	15'7" x 8'7"	4.76 x 2.62 m*
Bedroom 3	12'5" x 8'7"	3.79 x 2.62 m*
Bedroom 4	10'2" x 6'6"	3.10 x 1.99 m*
Bathroom	6'6" x 5'8"	1.99 x 1.73 m*

### SECOND FLOOR

Bedroom 1	20'0" x 9'8"	6.10 x 2.96 m*
En-suite	7'7" x 5'7"	2.30 x 1.71 m*

Customers should note this illustration is an example of The Charlecote house type. All dimensions indicated are approximate and furniture layout is for illustrative purposes only. Homes may be a 'handed' (mirror image) versions of the illustrations, and may be detached, semi-detached or terraced. Materials used may differ from plot to plot including render and roof tile colours. Detailed plans and specifications are available for inspection for each plot at our Marketing Suite during working hours and customers must check their individual specifications prior to making reservation.

\*\* All wardrobes are subject to site specification. Please see Sales Consultant for further details.

KEY  Hob  Oven  Fridge/freezer  Washing machine space  Dishwasher space  Tumble dryer space  Hot water cylinder  Cupboard

\*Max dimensions Note: Bedroom dimensions taken into wardrobe recess. All wardrobes are subject to site specification. Please see Sales Consultant for further details.

Traditional homes, built the way you remember

 **REDROW**  
A BETTER WAY TO LIVE