

POUNDBURY

— DORCHESTER —



CGI shows a typical street scene at Crown Street East

Plot 341

4 bedroom terraced home
2164 sq ft



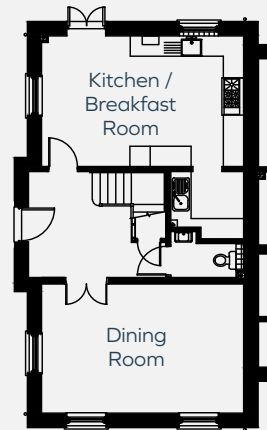
Plot 341

4 bedroom
terraced home
2164 sq ft

- Spacious living room with fireplace
- Fully integrated kitchen / breakfast room
- Utility room
- Large entrance hall
- Master bedroom with dressing area and en suite shower room
- Downstairs cloakroom
- Family bathroom
- Enclosed rear garden
- Double garage
- Gated driveway with allocated parking

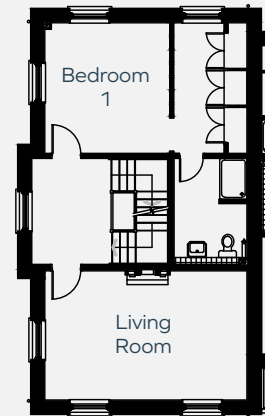
POUNDBURY — DORCHESTER —

Ground Floor



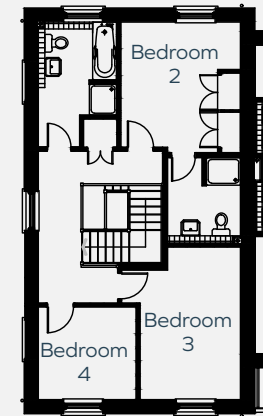
Kitchen / Breakfast Room 6.0m x 3.9m
Dining Room 6.0m x 3.8m

First Floor



Living Room 6.0m x 3.8m
Bedroom One 3.9m x 3.7m

Second Floor



Bedroom Two 3.7m x 3.5m
Bedroom Three 4.5m x 3.0m
Bedroom Four 2.9m x 2.7m

Plot floor plans are provided to indicate proposed floor layout for each home. Room measurements are accurate within + or - 50mm, however it is not recommended that these measurements are used for flooring installation, or such like, as plots can sometimes vary.



Raising Standards. Protecting Homeowners



www.consumercode.co.uk

01202 623420
morrishomes.co.uk



MORRISH
HOMES

BUILDING QUALITY
THROUGH GENERATIONS