



**Woodville Place  
Warrington**

*the place to be®*

**millerhomes**

A new home. The start of a whole new chapter for you and your family. And for us, the part of our job where bricks and mortar becomes a place filled with activity and dreams and fun and love. We put a huge amount of care into the houses we build, but the story's not finished until we match them up with the right people. So, once you've chosen a Miller home, we'll do everything we can to make the rest of the process easy, even enjoyable. From the moment you make your decision until you've settled happily in, we'll be there to help.



Living in Woodville Place	02
Welcome home	06
Floor plans	08
How to find us	40

# Plot Information

- Tolkien

See Page 08
- Darwin DA

See Page 10
- Carroll

See Page 12
- Esk

See Page 14
- Dahl

See Page 16
- Buchan

See Page 18
- Buchan DA

See Page 20
- Auden

See Page 22
- Mitford

See Page 24
- Stevenson B

See Page 26
- Stevenson

See Page 28
- Chantry

See Page 30
- Jura

See Page 32
- Shakespeare

See Page 34
- Starter Homes/  
Discount  
Market Units

The artist's impressions (computer-generated graphics) have been prepared for illustrative purposes and are indicative only. They do not form part of any contract, or constitute a representation or warranty. External appearance may be subject to variation upon completion of the project. Please note that the site plan is not drawn to scale.

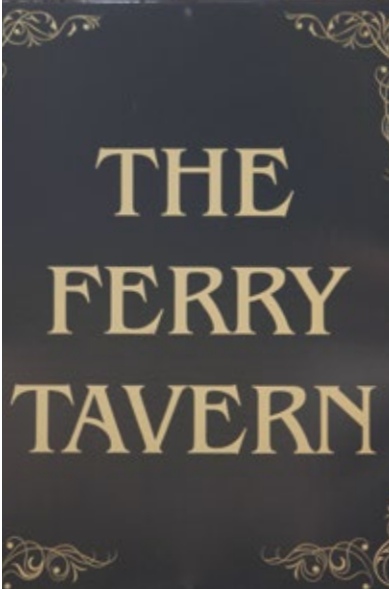


Quality of life is about the details of everyday living. From the little things, like knowing the nearest place to pick up a pint of milk, to more important matters like finding the right school or having a health centre nearby, you need to know that the community you're moving to will support you and your family, as well as being a pleasant place to live. So here's some useful information about the area around Woodville Place.



Woodville Place is around a mile from junction 8 of the M62, ideal for travel to Liverpool and Manchester, and linked to Warrington town centre by a series of pleasant walks and cycle paths. There is also a half-hourly bus service into the centre of town. Hourly trains from Sankey station, 20 minutes walk from the development, run to Liverpool Lime Street and Manchester Oxford Road stations, both journeys of just over half an hour. Warrington Bank Quay station, in the town centre, is on the main line between Scottish stations and London Euston, with travel into the capital taking around three hours.

The many outdoor recreational areas within a short walk include woodlands straddling nearby Whittle Avenue, pleasant paths along Whittle Brook and the excellent amenities of Sankey Valley Park with its play areas, BMX course, picturesque canal-side walks and a fascinating diversity of wildlife. Mersey Valley Golf and Country Club is just over two miles to the west. For indoor sport and fitness amenities, Great Sankey Leisure Centre includes swimming pools, a fitness suite, dance studio and sports hall.



This exciting new neighbourhood, just three miles from the centre of Warrington, is set on the edge of a major revitalisation initiative that includes a 35-acre park and new shopping and leisure facilities. With excellent transport links, including walking routes, cycle paths and fast access to the M62, these energy efficient two, three, four and five bedroom homes provide an opportunity to be amongst the first members of a new community. Welcome to Woodville Place...

The artist's impressions (computer-generated graphics) have been prepared for illustrative purposes and are indicative only. They do not form part of any contract, or constitute a representation or warranty. External appearance may be subject to variation upon completion of the project.



# Tolkien

### Overview

The bright lounge leads through to a beautifully planned, practical kitchen and dining room opening out to the garden. In addition to two first-floor bedrooms, a private staircase leads to a dormer-windowed en-suite master bedroom with a timeless, traditional appeal.

### Ground Floor

#### Lounge

3.192m max x 4.272m max  
10'6" x 14'0"

#### Dining

1.816m x 2.536m  
5'11" x 8'4"

#### Kitchen

2.324m x 3.065m  
7'7" x 10'1"

#### WC

0.855m x 1.630m  
2'10" x 5'4"

### First Floor

#### Bedroom 2

4.140m max x 2.600m max  
13'7" x 8'6"

#### Bedroom 3

2.135m x 2.734m  
7'0" x 9'0"

#### Bathroom

2.135m x 1.910m  
7'0" x 6'3"

### Second Floor

#### Master Bedroom

3.192m x 2.869m  
11'85 HGT. L.  
10'6" x 9'5"

#### En-Suite

2.084m max x 1.827m  
13'23 HGT. L.  
6'10" x 6'0"

### Plots

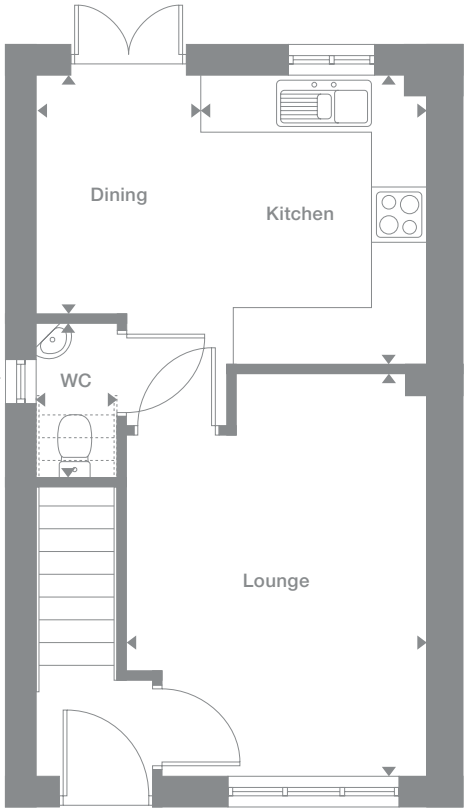
40, 41, 42\*,  
59, 60\*, 142\*,  
143, 145\*, 146,  
162\*, 163,

### Floor Space

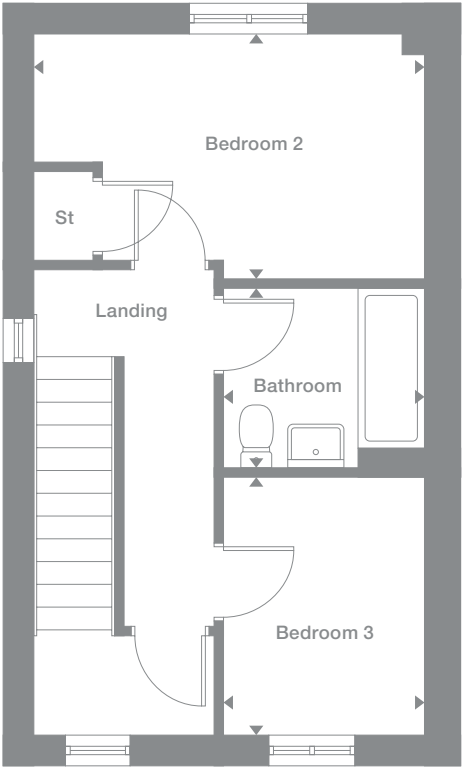
886 sq ft



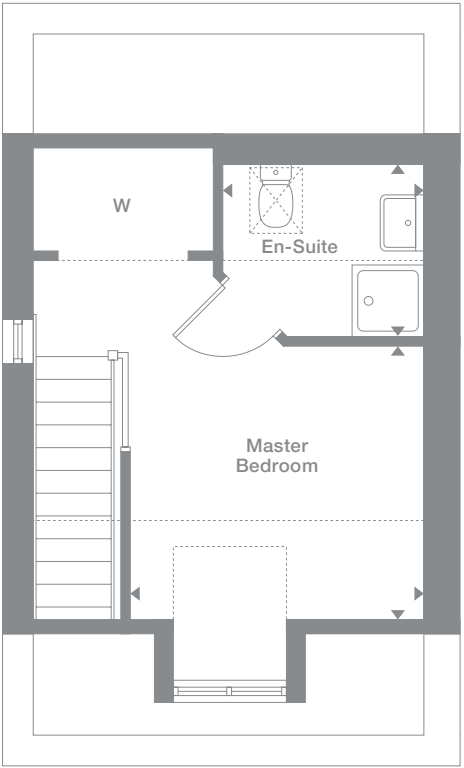
Ground Floor



First Floor



Second Floor



Photography represents typical Miller Homes' interiors and exteriors. All plans in this brochure are not drawn to scale and are for illustrative purposes only. Consequently, they do not form part of any contract. Room layouts are provisional and may be subject to alteration. Please refer to the 'Important Notice' section at the back of this brochure for more information.

\* Plots are a mirror image of plans shown above † End terrace only

# Darwin DA

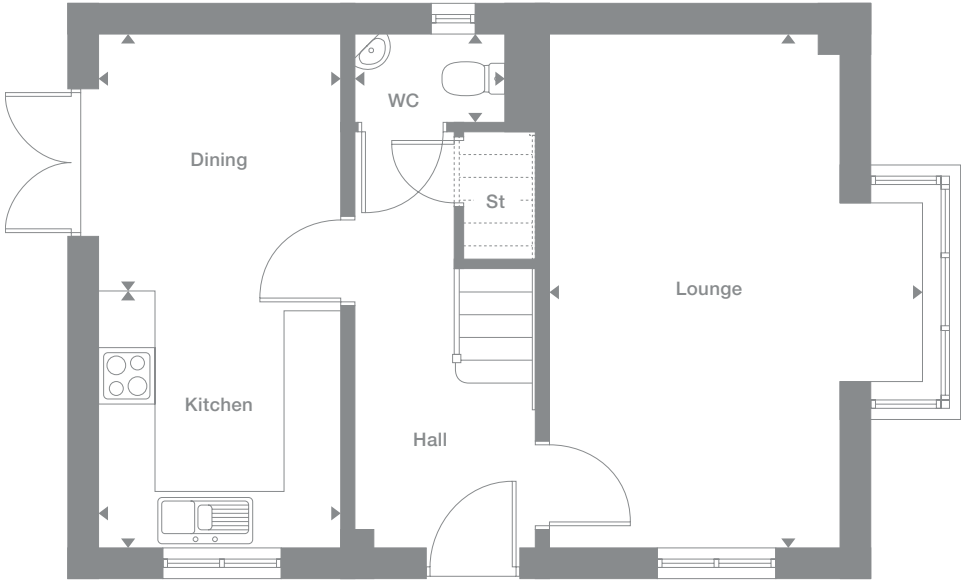
**Overview**  
The impressively broad bay window of the dual-aspect living room, the french doors that keep the kitchen cool and airy and the superb gallery landing are amongst the many features that make this an exceptionally bright, welcoming home.

<b>Ground Floor</b>	<b>First Floor</b>
<b>Lounge</b> 3.980m max x 5.450m 13'1" x 17'11"	<b>Master Bedroom</b> 3.138m x 3.440m max 10'4" x 11'3"
<b>Dining</b> 2.556m x 2.998m 8'5" x 8'11"	<b>En-Suite</b> 1.933m x 1.693m 6'4" x 5'7"
<b>Kitchen</b> 2.556m x 2.452m 8'5" x 8'11"	<b>Bedroom 2</b> 2.594m max x 2.863m 8'6" x 9'5"
<b>WC</b> 1.590m x 0.949m 5'3" x 3'1"	<b>Bedroom 3</b> 2.594m x 1.859m 8'6" x 6'1"
	<b>Bathroom</b> 2.048m x 1.917m 6'9" x 6'3"

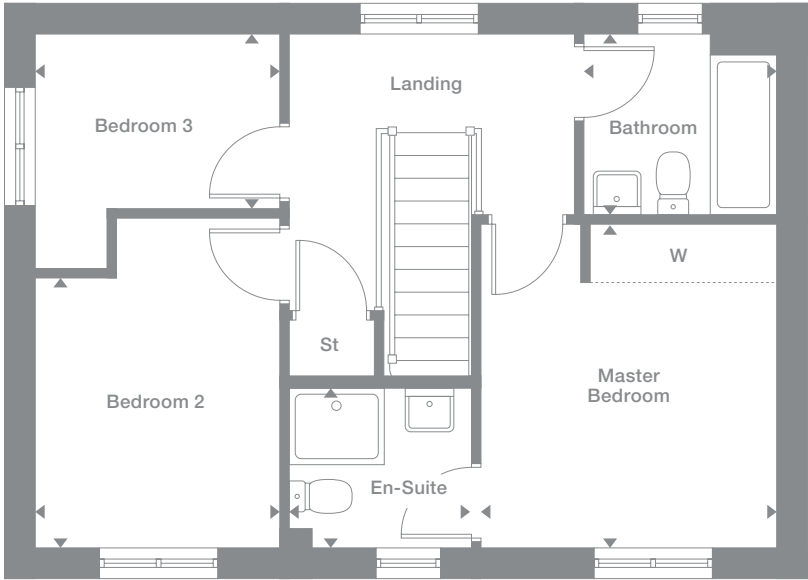
<b>Plots</b> 65, 69*	<b>Floor Space</b> 940 sq ft
-------------------------	---------------------------------



Ground Floor



First Floor



Photography represents typical Miller Homes' interiors and exteriors. All plans in this brochure are not drawn to scale and are for illustrative purposes only. Consequently, they do not form part of any contract. Room layouts are provisional and may be subject to alteration. Please refer to the 'Important Notice' section at the back of this brochure for more information.

\* Plots are a mirror image of plans shown above

# Carroll

### Overview

The bay window and broad canopy sheltering the entrance add an instant appeal to this superb family home. With its elegant L-shaped lounge, feature french doors in the dining area and an en-suite master bedroom, it perfectly balances style with comfort.

### Ground Floor

- Lounge**  
3.850m max x 5.257m max  
12'8" x 17'3"

**Dining**  
1.950m x 3.692m  
6'5" x 12'1"

**Kitchen**  
1.852m x 3.692m  
6'1" x 12'1"

**WC**  
2.006m x 1.020m  
6'7" x 3'4"
- Master Bedroom**  
3.850m max x 3.047m  
12'8" x 10'0"

**En-Suite**  
2.844m max x 1.117m max  
9'4" x 3'8"

**Bedroom 2**  
4.019m x 4.192m max  
13'2" x 13'9"

**Bedroom 3**  
2.838m x 3.547m  
9'4" x 11'8"

**Bathroom**  
3.010m max x 1.700m max  
9'11" x 5'7"

### Plots

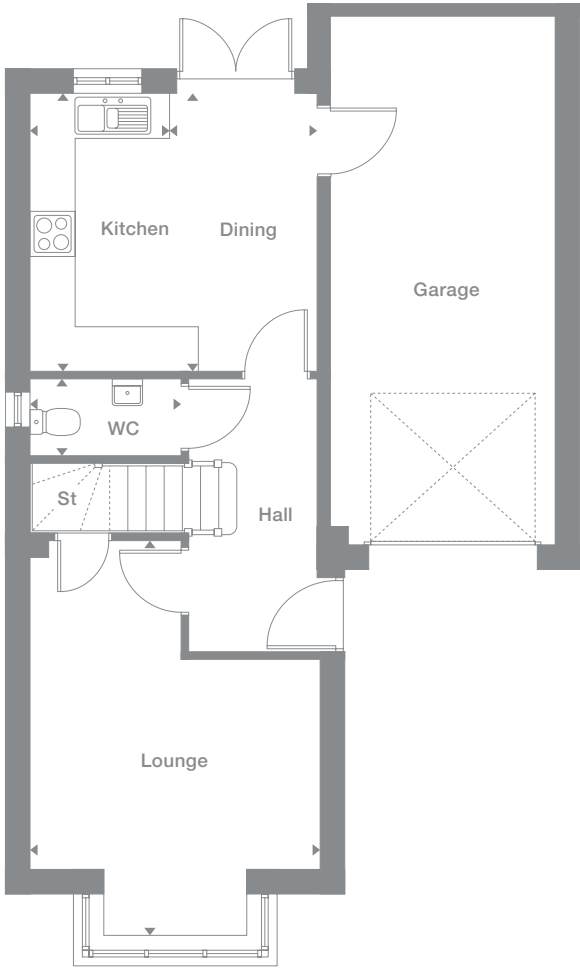
8, 23,  
39\*, 47,  
53, 54\*,  
57, 58\*,  
61, 107\*,  
137\*, 147\*,  
186, 171

### Floor Space

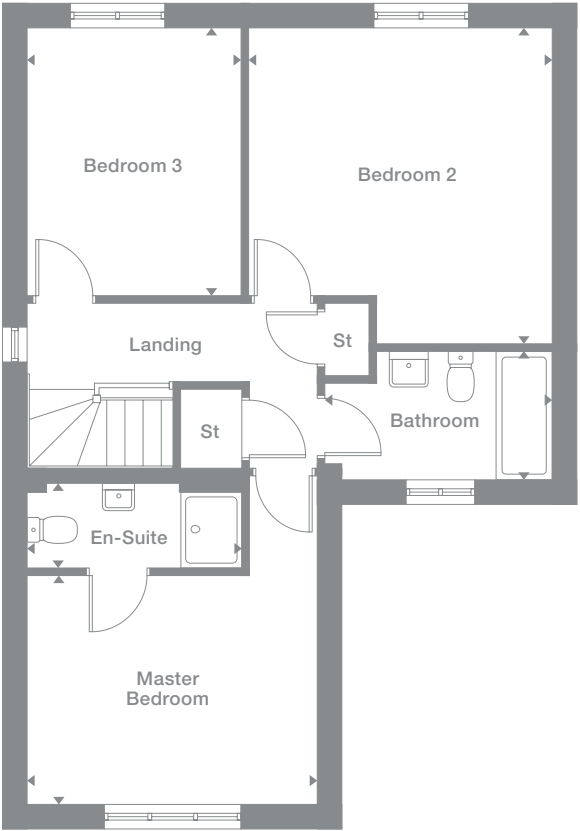
1,068 sq ft



### Ground Floor



### First Floor



Photography represents typical Miller Homes' interiors and exteriors. All plans in this brochure are not drawn to scale and are for illustrative purposes only. Consequently, they do not form part of any contract. Room layouts are provisional and may be subject to alteration. Please refer to the 'Important Notice' section at the back of this brochure for more information.

\* Plots are a mirror image of plans shown above

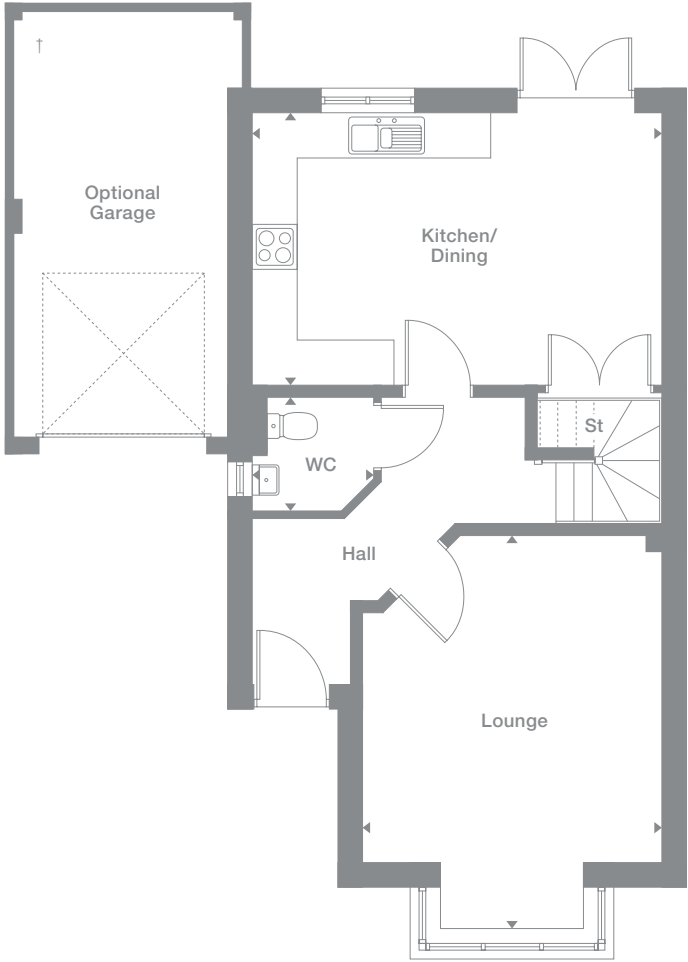
**Overview**  
Designed and equipped to make light of the most adventurous cookery, the kitchen and dining room of the Esk is a perfect setting for relaxed entertaining, and complements an impressive living room with a stylish traditional bay window.

- Ground Floor**  
**Lounge**  
3.966m max x 5.231m max  
13'0" x 17'2"  
**Kitchen/Dining**  
5.429m x 3.614m  
17'10" x 11'10"  
**WC**  
1.617m max x 1.510m max  
5'4" x 4'11"
- First Floor**  
**Master Bedroom**  
3.966m max x 2.678m  
13'0" x 8'9"  
**En-Suite**  
1.797m x 1.617m  
5'11" x 5'4"  
**Bedroom 2**  
3.551m x 2.641m  
11'8" x 8'8"  
**Bedroom 3**  
1.785m x 3.671m  
5'10" x 12'1"  
**Bedroom 4**  
2.513m max x 2.569m max  
8'3" x 8'5"  
**Bathroom**  
2.513m max x 2.170m max  
8'3" x 7'1"

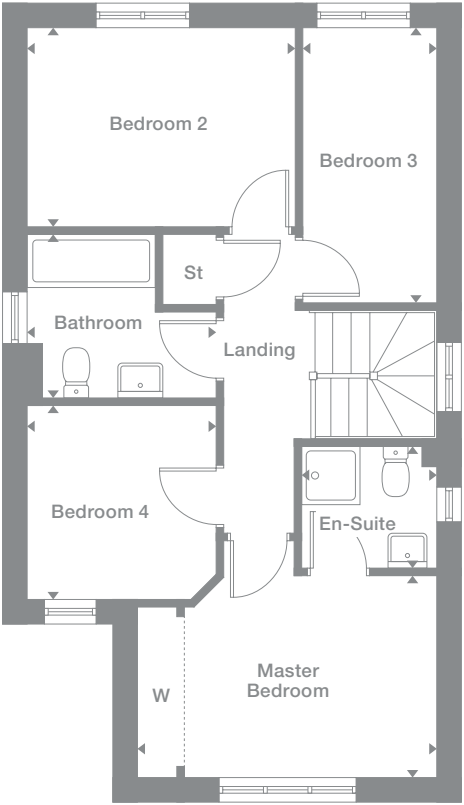
- Plots**  
6\*, 9\*,  
28, 31, 49,  
55, 56\*,  
105\*, 108\*,  
116, 124\*,  
129, 140\*,  
149\*, 160,  
165\*, 172\*,  
184\*, 188\*
- Floor Space**  
1,105 sq ft



Ground Floor



First Floor



Photography represents typical Miller Homes' interiors and exteriors. All plans in this brochure are not drawn to scale and are for illustrative purposes only. Consequently, they do not form part of any contract. Room layouts are provisional and may be subject to alteration. Please refer to the 'Important Notice' section at the back of this brochure for more information.

\* Plots are a mirror image of plans shown above † Garage may be omitted

# Dahl

## Overview

French doors integrated into a feature bay window bring a conservatory-like appeal to the light-filled lounge, and the separate study means a peaceful work space is always available. The en-suite master bedroom, with its dormer window and dressing area, has a special charm.

## Ground Floor

### Lounge

4.740m max X 4.549m max  
15'7" x 14'11"

### Dining

2.587m x 2.313m  
8'6" x 7'7"

### Kitchen

2.587m x 2.898m  
8'6" x 9'6"

### WC

0.917m x 2.147m  
3'0" x 7'1"

## First Floor

### Bedroom 2

4.740m max X 3.774m max  
15'7" x 12'5"

### Bedroom 3

2.506m x 3.178m  
8'3" x 10'5"

### Study

2.141m x 2.147m  
7'0" x 7'1"

### Bathroom

2.506m max X 3.109m max  
8'3" x 10'2"

## Second Floor

### Master Bedroom

3.554m max X 3.941m  
to 1.191 H.L.  
11'8" x 12'11"

### En-Suite

2.127m max X 2.324m  
to 1.191 H.L.  
7'0" x 7'7"

### Dressing

2.320m x 2.118m  
to 1.191 H.L.  
7'7" x 6'11"

## Plots

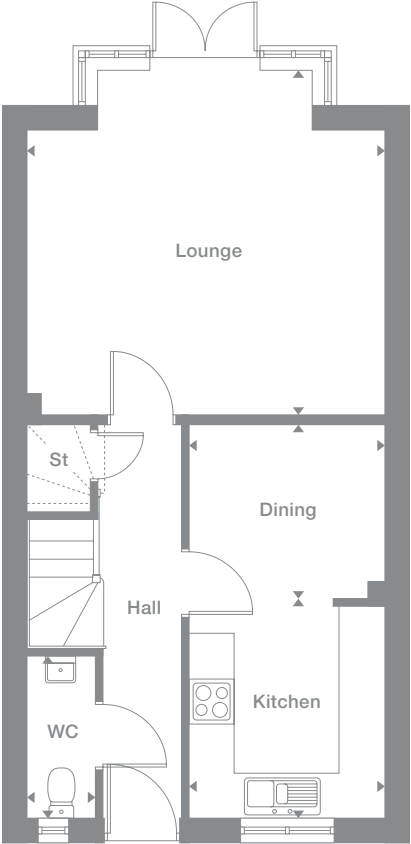
84, 85\*,  
92, 93\*

## Floor Space

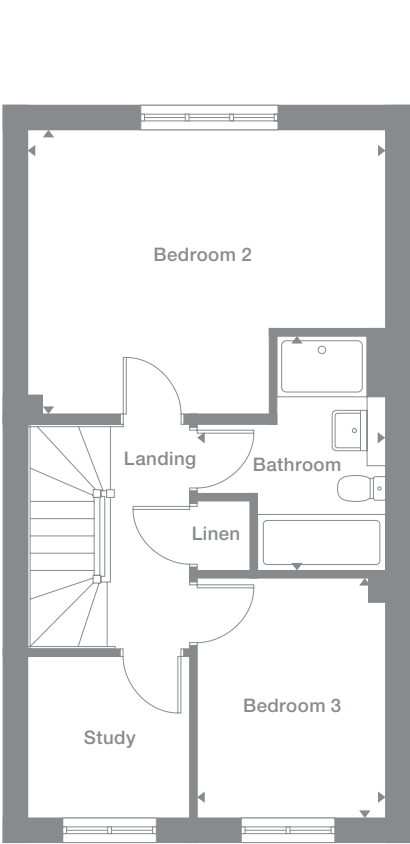
1,275 sq ft



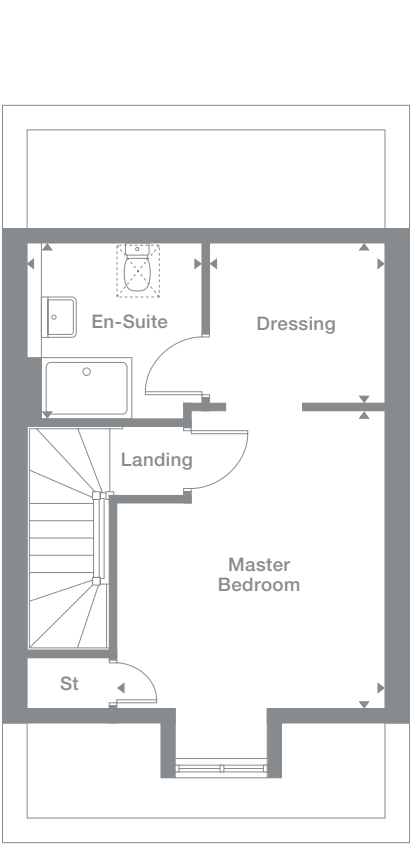
Ground Floor



First Floor



Second Floor



Photography represents typical Miller Homes' interiors and exteriors. All plans in this brochure are not drawn to scale and are for illustrative purposes only. Consequently, they do not form part of any contract. Room layouts are provisional and may be subject to alteration. Please refer to the 'Important Notice' section at the back of this brochure for more information.

\* Plots are a mirror image of plans shown above

# Buchan

**Overview**  
Windows at either end bring a beautifully changing natural light to the impressively long kitchen and dining room of the Buchan, while the separate study is perfect for working from home or creating a computer suite.

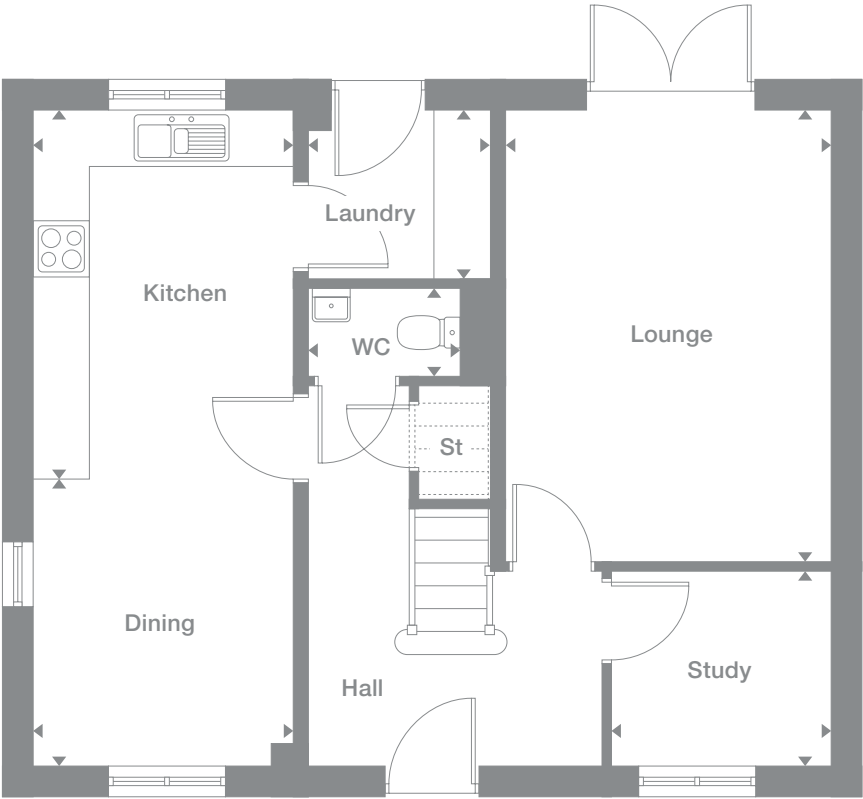
<b>Ground Floor</b>	<b>First Floor</b>
<b>Lounge</b> 3.450m x 4.797m 11'4" x 15'9"	<b>Master Bedroom</b> 3.507m max x 3.793m max 11'6" x 12'5"
<b>Dining</b> 2.763m x 3.320m 9'1" x 10'11"	<b>En-Suite</b> 2.238m max x 2.044m max 7'4" x 6'8"
<b>Kitchen</b> 2.763m x 3.630m 9'1" x 11'11"	<b>Bedroom 2</b> 2.805m max x 3.762m max 9'2" x 12'4"
<b>WC</b> 1.620m x 0.945m 5'4" x 3'1"	<b>Bedroom 3</b> 2.519m x 3.095m 8'3" x 10'2"
<b>Laundry</b> 1.937m x 1.799m 6'4" x 5'11"	<b>Bedroom 4</b> 2.411m x 3.064m 7'11" x 10'1"
<b>Study</b> 2.323m x 2.060m 7'7" x 6'9"	<b>Bathroom</b> 3.048m max x 1.700m max 10'0" x 5'7"

**Plots**  
95, 119\*, 127

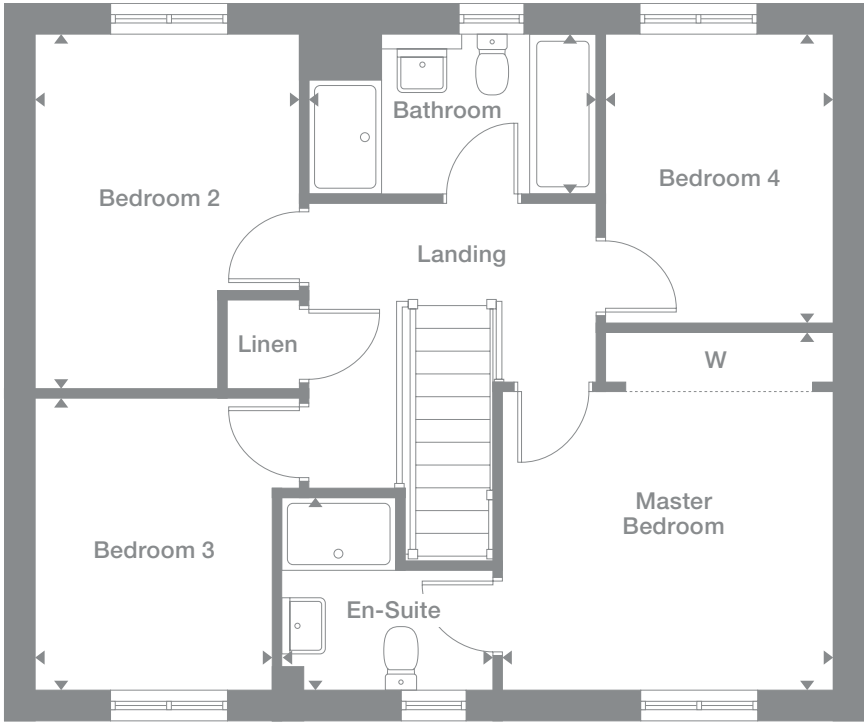
**Floor Space**  
1,264 sq ft



Ground Floor



First Floor



Photography represents typical Miller Homes' interiors and exteriors. All plans in this brochure are not drawn to scale and are for illustrative purposes only. Consequently, they do not form part of any contract. Room layouts are provisional and may be subject to alteration. Please refer to the 'Important Notice' section at the back of this brochure for more information.

\* Plots are a mirror image of plans shown above  
† Optional surveillance window

# Buchan DA

## Overview

The broad hallway, feature staircase and superb gallery landing set a spacious tone that enhances each room of this immensely comfortable home, while the beautifully equipped bathroom, kitchen and laundry room demonstrate a meticulous attention to detail.

## Ground Floor

- Lounge**  
3.450m x 4.797m  
11'4" x 15'9"
- Dining**  
2.763m x 3.149m  
9'1" x 10'4"
- Kitchen**  
2.763m x 3.801m  
9'1" x 12'6"
- WC**  
1.620m x 0.945m  
5'4" x 3'1"
- Laundry**  
1.937m x 1.799m  
6'4" x 5'11"
- Study**  
2.323m x 2.060m  
7'7" x 6'9"

## First Floor

- Master Bedroom**  
3.507m x 3.793m max  
11'6" x 12'5"
- En-Suite**  
2.238m x 2.044m max  
7'4" x 6'8"
- Bedroom 2**  
2.805m max x 3.762m max  
9'2" x 12'4"
- Bedroom 3**  
2.519m x 3.095m  
8'3" x 10'2"
- Bedroom 4**  
2.411m x 3.064m  
7'11" x 10'1"
- Bathroom**  
3.048m max x 1.700m max  
10'0" x 5'7"

## Plots

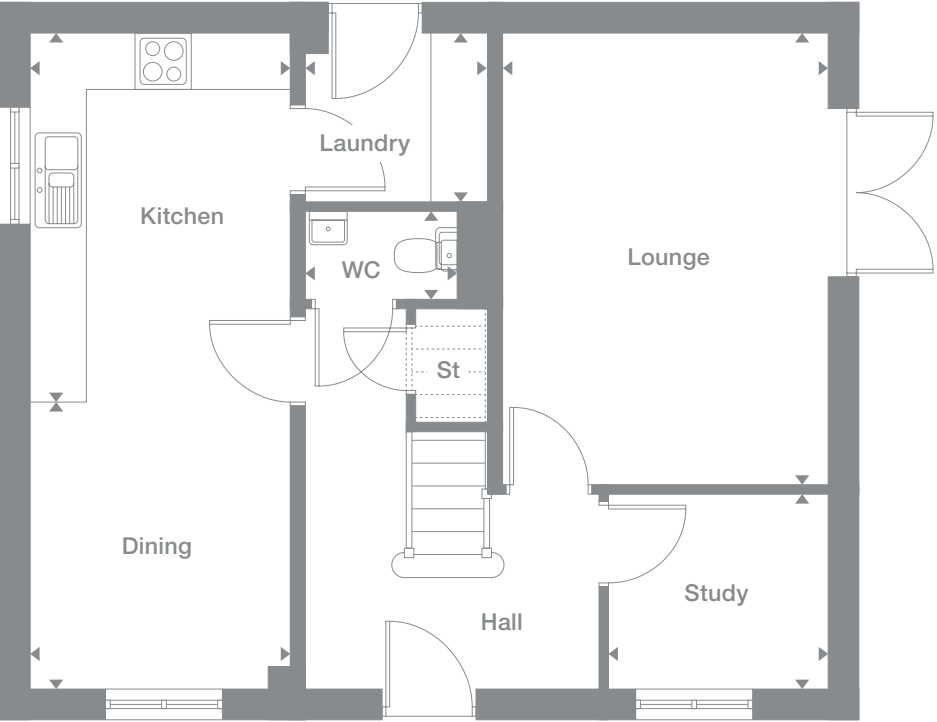
3\*, 27, 29,  
74\*, 106\*,  
113, 159, 166\*,  
185\*, 191

## Floor Space

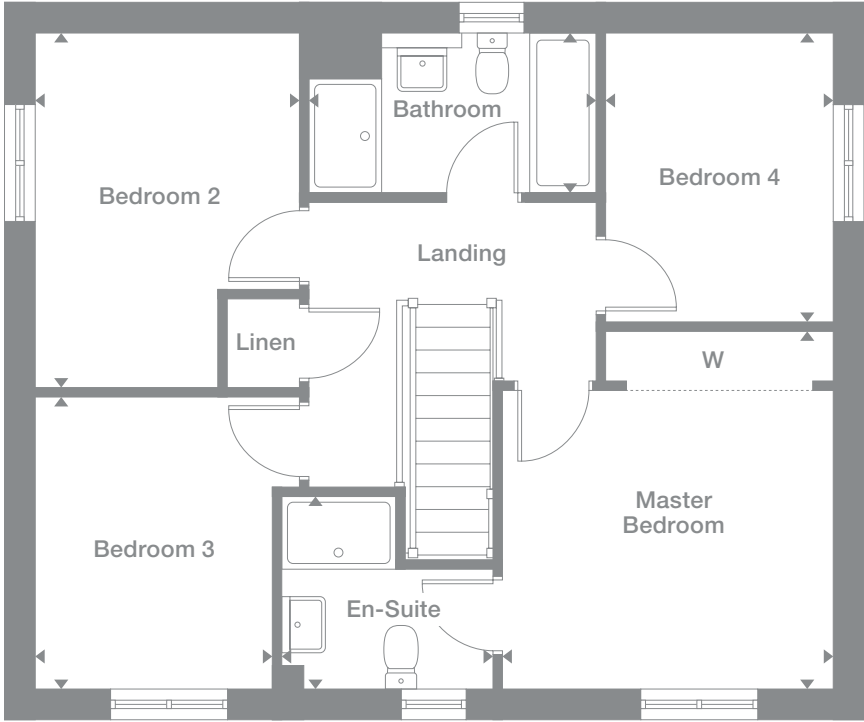
1,264 sq ft



Ground Floor



First Floor



Photography represents typical Miller Homes' interiors and exteriors. All plans in this brochure are not drawn to scale and are for illustrative purposes only. Consequently, they do not form part of any contract. Room layouts are provisional and may be subject to alteration. Please refer to the 'Important Notice' section at the back of this brochure for more information.

\* Plots are a mirror image of plans shown above

# Auden

## Overview

Features such as the innovative bay window incorporating french doors, and the charming master bedroom suite with its dormer window and dressing area, clearly identify the Auden as a home of immense character and distinction.

## Ground Floor

### Lounge

4.740m max x 4.549m max  
15'7" x 14'11"

### Dining

2.587m x 2.313m  
8'6" x 7'7"

### Kitchen

2.587m x 2.898m  
8'6" x 9'6"

### WC

0.917m x 2.147m  
3'0" x 7'1"

## First Floor

### Bedroom 2

4.740m max x 3.774m max  
15'7" x 12'5"

### Bedroom 3

2.506m x 3.178m  
8'3" x 10'5"

### Bedroom 4

2.141m x 2.147m  
7'0" x 7'1"

### Bathroom

2.506m max x 3.109m max  
8'3" x 10'2"

## Second Floor

### Master Bedroom

3.554m max x 3.974m  
to 1191 H.L.  
11'8" x 13'0"

### En-Suite

2.127m max x 2.324m  
to 1191 H.L.  
7'0" x 7'9"

### Dressing

2.320m x 2.118m  
to 1191 H.L.  
7'7" x 7'1"

## Plots

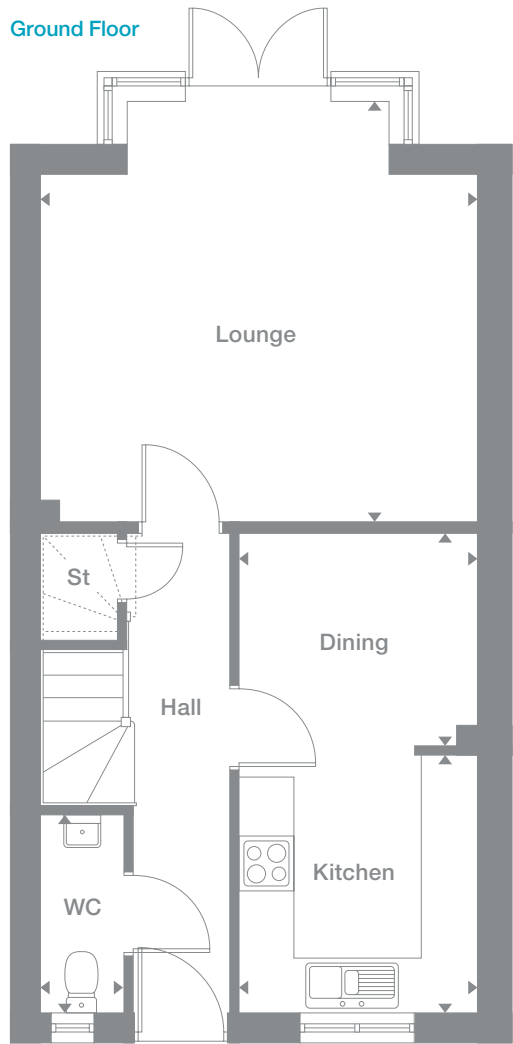
12, 13\*, 14\*,  
16, 17\*, 18\*,  
33, 34\*, 35,  
36\*, 37, 38\*,  
51, 52\*, 72,  
73\*, 109\*,  
110\*, 111, 130\*,  
131, 176, 177\*

## Floor Space

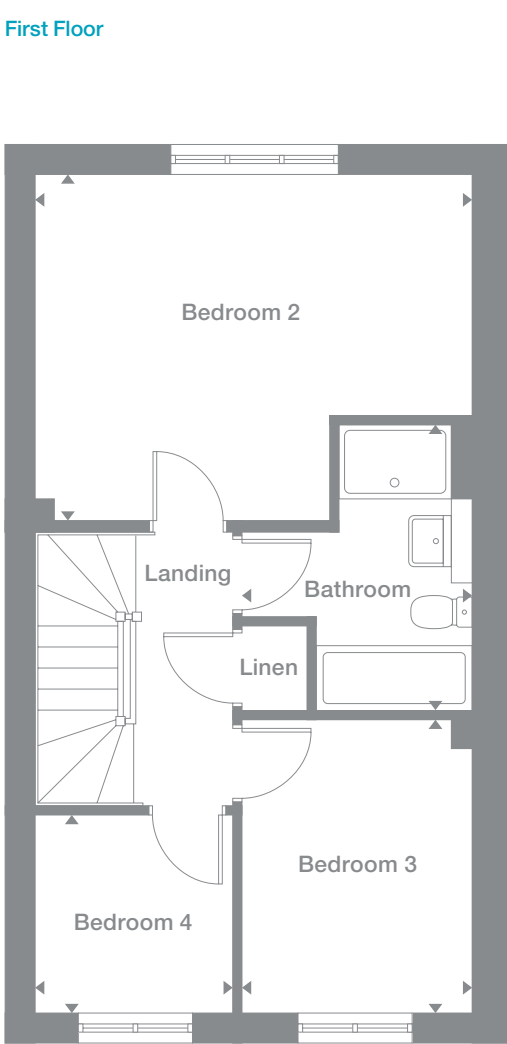
1,275 sq ft



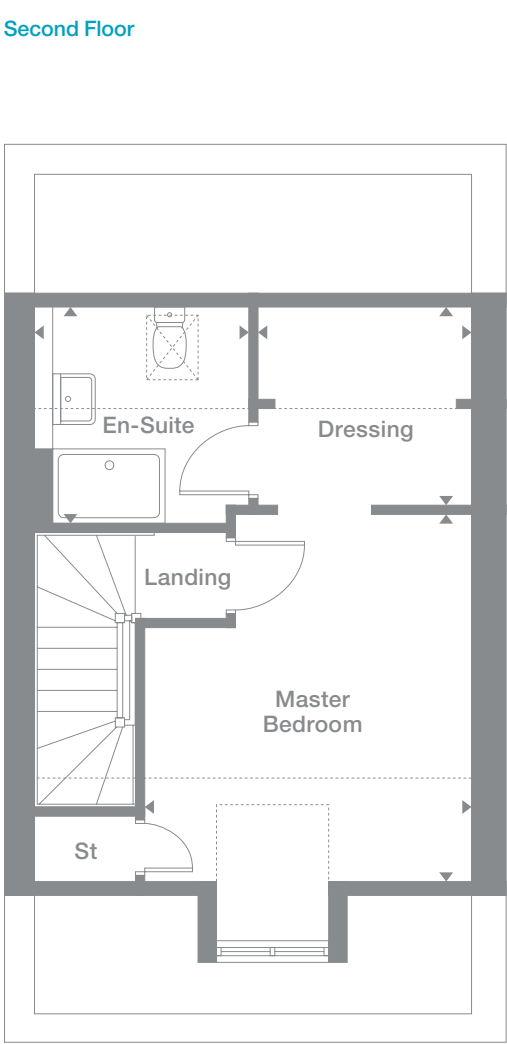
Ground Floor



First Floor



Second Floor



Photography represents typical Miller Homes' interiors and exteriors. All plans in this brochure are not drawn to scale and are for illustrative purposes only. Consequently, they do not form part of any contract. Room layouts are provisional and may be subject to alteration. Please refer to the 'Important Notice' section at the back of this brochure for more information.

\* Plots are a mirror image of plans shown above

# Mitford

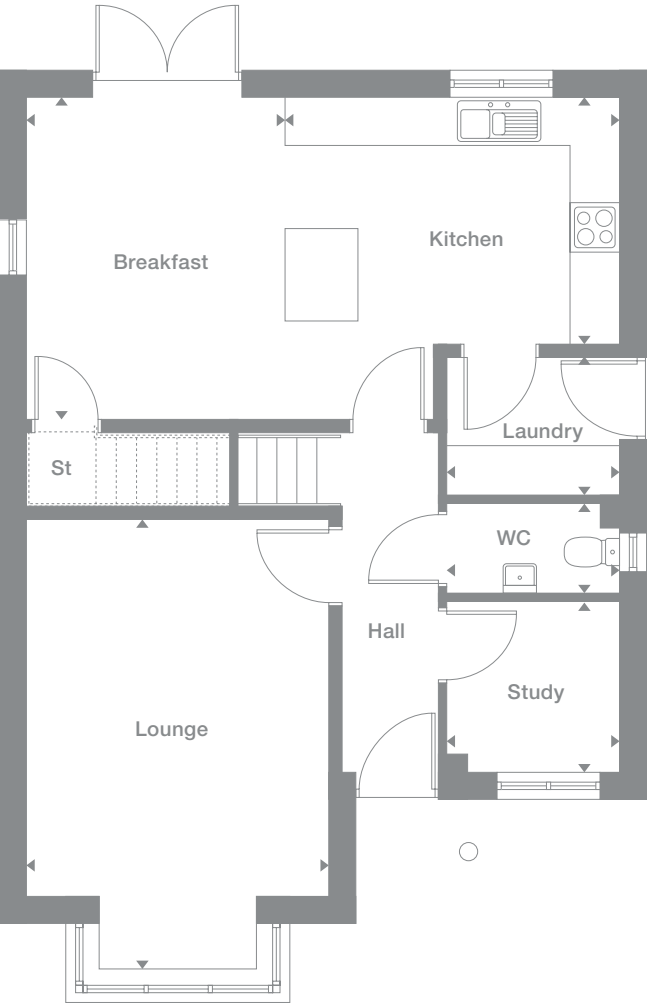
**Overview**  
Features like the elegant bay window and the light-filled gallery landing illustrate the unmistakable quality of this superb home, and a separate laundry room helps to keep the kitchen free for creative cooking and conversation.

<b>Ground Floor</b>	<b>First Floor</b>
<b>Lounge</b> 3.651m max x 5.446m max 12'0" x 17'10"	<b>Master Bedroom</b> 3.651m max x 4.603m max 12'0" x 15'1"
<b>Kitchen</b> 3.922m x 2.993m 12'10" x 9'10"	<b>En-Suite</b> 1.618m max x 2.073m max 5'4" x 6'10"
<b>Breakfast</b> 3.224m x 3.885m 10'7" x 12'9"	<b>Bedroom 2</b> 3.793m x 2.758m 12'5" x 9'1"
<b>WC</b> 2.087m x 1.082m 6'10" x 3'7"	<b>Bedroom 3</b> 3.260m x 2.758m 10'8" x 9'1"
<b>Laundry</b> 2.087m x 1.660m 6'10" x 5'5"	<b>Bedroom 4</b> 2.087m x 3.147m 6'10" x 10'4"
<b>Study</b> 2.087m x 2.060m 6'10" x 6'9"	<b>Bathroom</b> 2.558m max x 2.040m max 8'5" x 6'8"

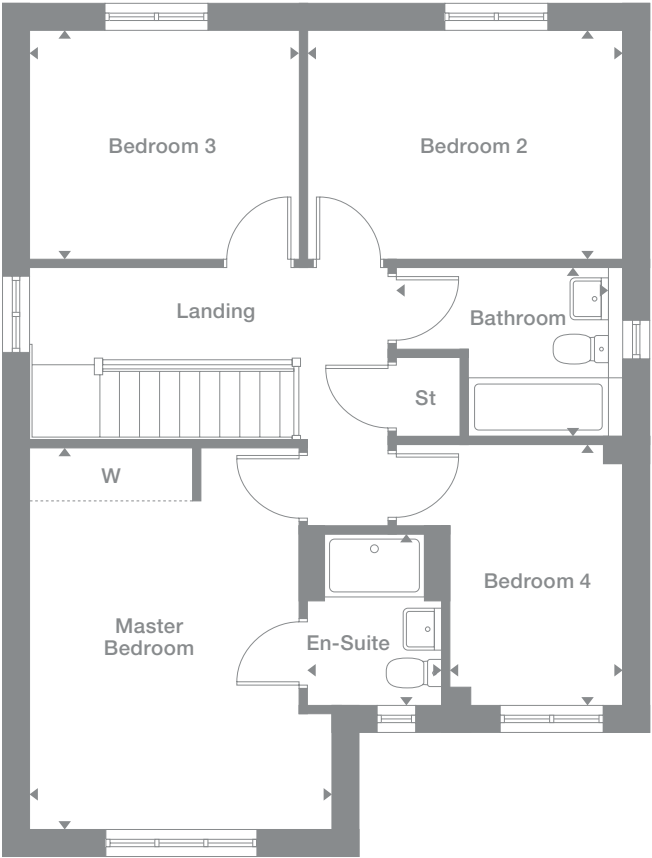
<b>Plots</b>	<b>Floor Space</b>
5, 7, 20, 24, 26, 30, 48, 50*, 76*, 77, 82*, 96, 104*, 121*, 132*, 135*, 141*, 148*, 173*, 175, 187, 189*, 190*	1,388 sq ft <sup>2</sup>



Ground Floor



First Floor



Photography represents typical Miller Homes' interiors and exteriors. All plans in this brochure are not drawn to scale and are for illustrative purposes only. Consequently, they do not form part of any contract. Room layouts are provisional and may be subject to alteration. Please refer to the 'Important Notice' section at the back of this brochure for more information.

\* Plots are a mirror image of plans shown above  
† Optional surveillance window

# Stevenson B

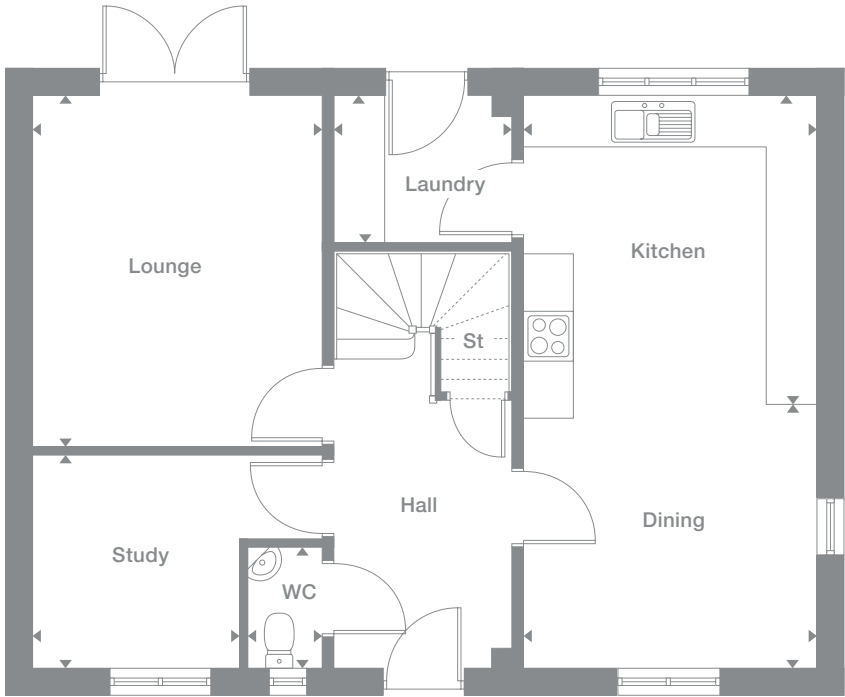
**Overview**  
The broad hallway sets the tone of spacious style that distinguishes this prestigious family home. The study and laundry room help to keep work and pleasure separate, leaving the big family kitchen free for food and fun.

<b>Ground Floor</b>	<b>First Floor</b>
<b>Lounge</b> 3.462m x 4.216m 11'4" x 13'10"	<b>Master Bedroom</b> 3.574m x 4.352m max 11'9" x 14'3"
<b>Dining</b> 3.517m x 3.234m 11'6" x 10'7"	<b>En-Suite</b> 2.126m x 1.760m 7'0" x 5'9"
<b>Kitchen</b> 3.517m x 3.630m 11'6" x 11'11"	<b>Bedroom 2</b> 3.519m max x 4.266m max 11'7" x 14'0"
<b>WC</b> 0.900m x 1.450m 2'11" x 4'9"	<b>Bedroom 3</b> 3.462m max x 2.505m max 11'4" x 8'3"
<b>Laundry</b> 2.126m x 1.760m 7'0" x 5'9"	<b>Bedroom 4</b> 3.514m max x 2.419m max 11'6" x 7'11"
<b>Study</b> 2.469m x 2.556m 8'1" x 8'5"	<b>Bathroom</b> 2.243m x 1.700m 7'4" x 5'7"

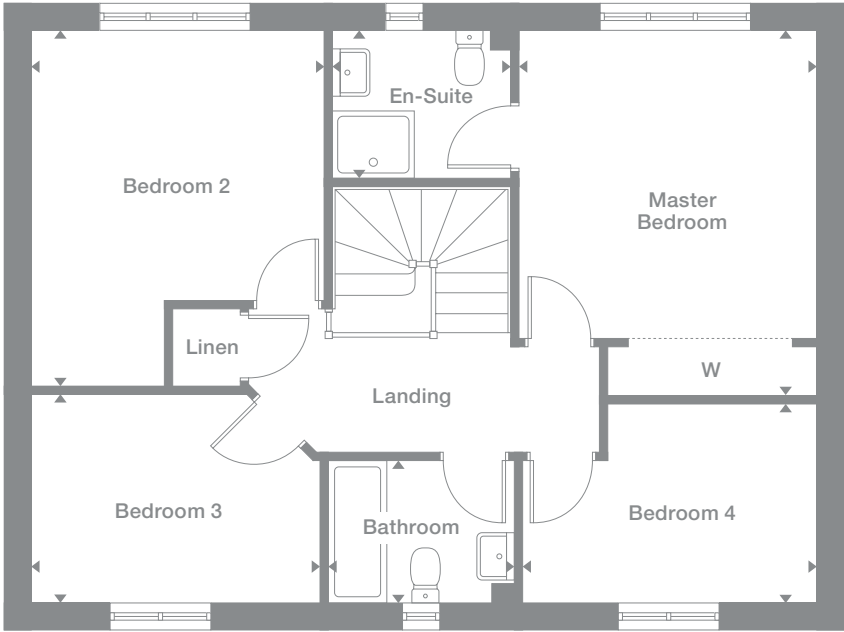
<b>Plots</b> 25*, 83, 94, 125*, 128, 144	<b>Floor Space</b> 1,390 sq ft
---	-----------------------------------



Ground Floor



First Floor



Photography represents typical Miller Homes' interiors and exteriors. All plans in this brochure are not drawn to scale and are for illustrative purposes only. Consequently, they do not form part of any contract. Room layouts are provisional and may be subject to alteration. Please refer to the 'Important Notice' section at the back of this brochure for more information.

\* Plots are a mirror image of plans shown above  
† Optional surveillance window

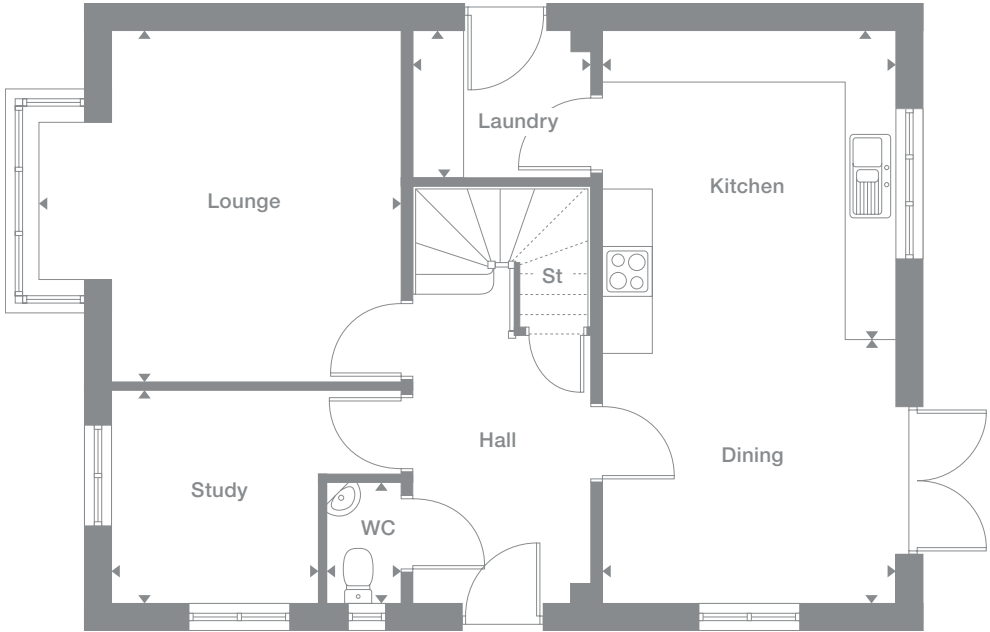
**Overview**  
Beyond the magnificent hall and the feature staircase, a dining area with garden access and a beautifully equipped kitchen form a natural focus for family life. Several rooms have dual aspect outlooks, accentuating the Stevenson's light, open ambience.

<b>Ground Floor</b>	<b>First Floor</b>
<b>Lounge</b> 4.362m max x 4.216m 14'4" x 13'10"	<b>Master Bedroom</b> 3.574m x 4.352m max 11'9" x 14'3"
<b>Dining</b> 3.517m x 3.212m 11'6" x 10'6"	<b>En-Suite</b> 2.126m x 1.760m 7'0" x 5'9"
<b>Kitchen</b> 3.517m x 3.652m 11'6" x 12'0"	<b>Bedroom 2</b> 3.519m x 4.266m max 11'7" x 14'0"
<b>WC</b> 0.900m x 1.450m 2'11" x 4'9"	<b>Bedroom 3</b> 3.462m max x 2.505m max 11'4" x 8'3"
<b>Laundry</b> 2.126m x 1.760m 7'0" x 5'9"	<b>Bedroom 4</b> 3.514m max x 2.419m max 11'6" x 7'11"
<b>Study</b> 2.469m x 2.556m 8'1" x 8'5"	<b>Bathroom</b> 2.243m x 1.700m 7'4" x 5'7"

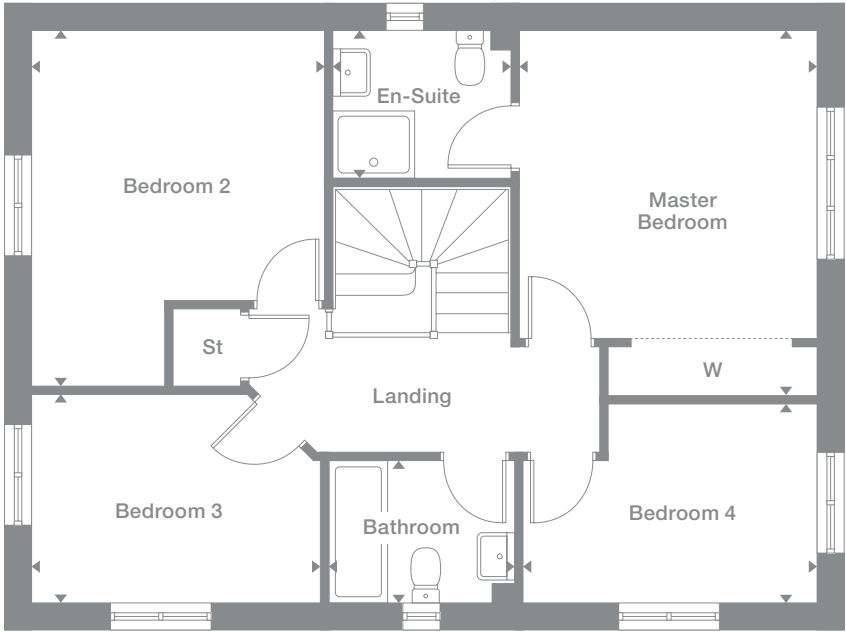
<b>Plots</b> 1, 10*, 21, 22, 80, 81*, 112*, 134	<b>Floor Space</b> 1,408 sq ft
---	-----------------------------------



Ground Floor



First Floor



Photography represents typical Miller Homes' interiors and exteriors. All plans in this brochure are not drawn to scale and are for illustrative purposes only. Consequently, they do not form part of any contract. Room layouts are provisional and may be subject to alteration. Please refer to the 'Important Notice' section at the back of this brochure for more information.

\* Plots are a mirror image of plans shown above

# Chantry

### Overview

With its practical, inviting kitchen and breakfast room complemented by a stylish bay-windowed dining room, this feature-filled home is perfect for entertaining. The lounge shares the first floor with an informal family room, and one of the four bedrooms is en-suite.

### Ground Floor

<b>Dining</b> 2.900m max x 4.474m max 9'6" x 14'8"	<b>Kitchen</b> 2.900m x 3.550m 9'6" x 11'8"	<b>Breakfast</b> 2.900m x 2.389m 9'6" x 7'10"	<b>WC</b> 1.854m x 0.970m 6'1" x 3'2"	<b>Laundry</b> 1.853m x 2.263m 6'1" x 7'5"
--	---	---	---	--

### First Floor

<b>Lounge</b> 4.847m max x 4.262m max 15'11" x 14'0"	<b>Family</b> 2.747m x 3.338m 9'0" x 10'11"	<b>Bedroom 4</b> 2.007m x 3.337m 6'7" x 10'11"
--	---	--

### Second Floor

<b>Master Bedroom</b> 3.247m max x 3.626m 10'8" x 11'11"	<b>En-Suite</b> 1.506m max x 2.419m max 4'11" x 7'11"	<b>Bedroom 2</b> 2.747m x 3.338m 9'0" x 10'11"	<b>Bedroom 3</b> 2.007m x 3.052m 6'7" x 10'0"	<b>Bathroom</b> 1.986m max x 2.030m max 6'6" x 6'8"
--	---	--	---	---

### Plots

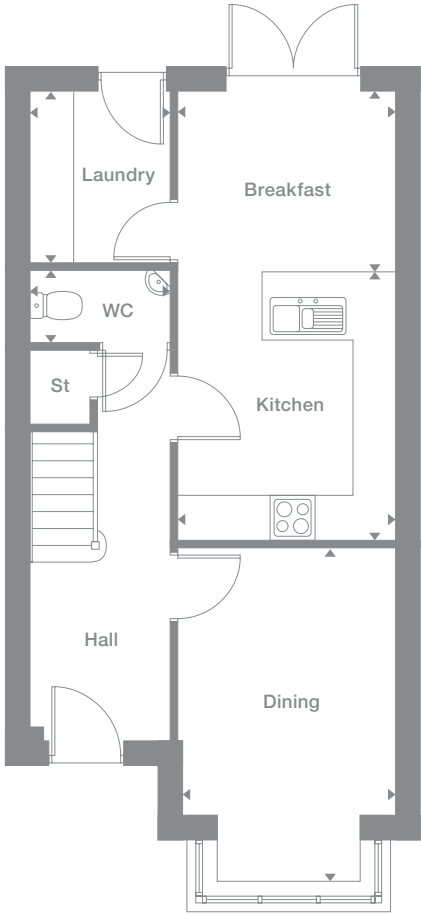
70\*, 71,  
87\*, 88,  
89\*, 90,  
99, 100\*,  
101, 102\*,  
122, 123\*,  
178\*, 179

### Floor Space

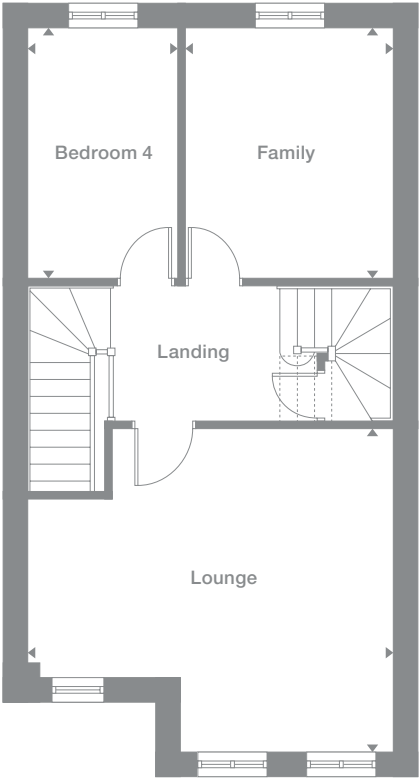
1,475sq ft



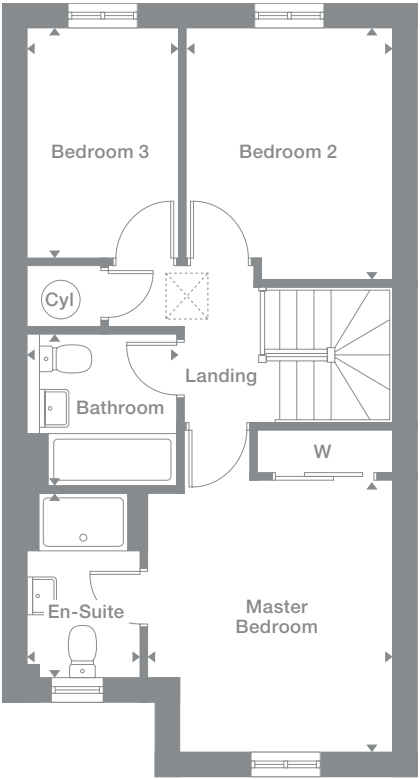
Ground Floor



First Floor



Second Floor



Photography represents typical Miller Homes' interiors and exteriors. All plans in this brochure are not drawn to scale and are for illustrative purposes only. Consequently, they do not form part of any contract. Room layouts are provisional and may be subject to alteration. Please refer to the 'Important Notice' section at the back of this brochure for more information.

\* Plots are a mirror image of plans shown above

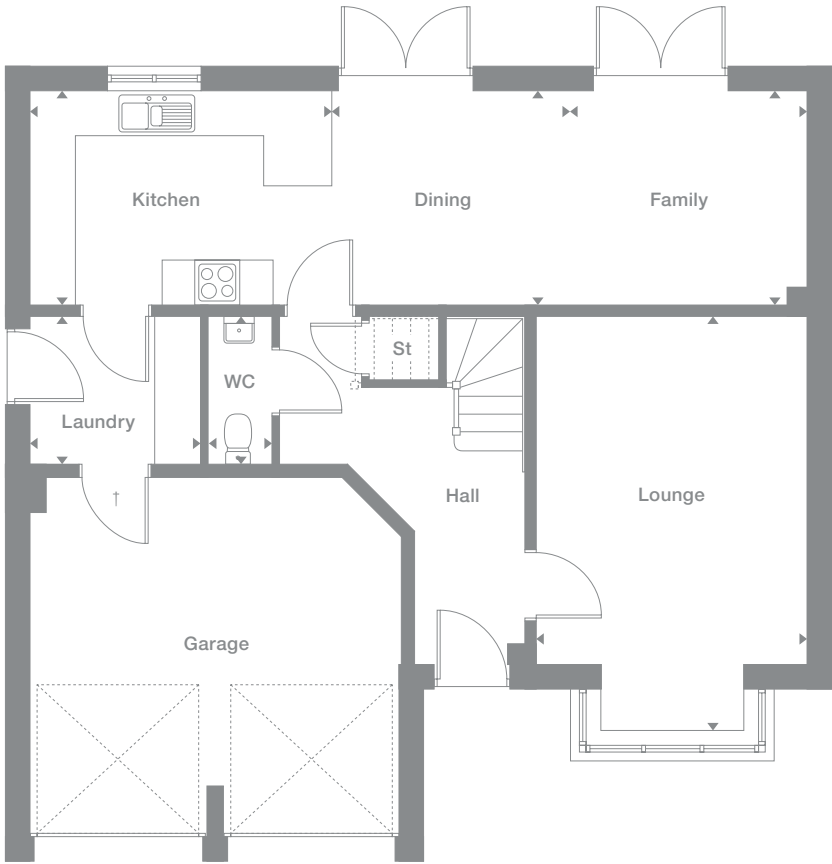
**Overview**  
Arranged around a striking L-shaped hall and superb gallery landing, the exceptionally spacious Jura includes a wealth of premium features. A breathtaking family and dining space complements the superbly-equipped kitchen, and two of the five bedrooms are en-suite.

<b>Ground Floor</b>	<b>First Floor</b>
<b>Lounge</b> 3.580m x 5.499m max 11'9" x 18'0"	<b>Master Bedroom</b> 4.895m max x 4.277m max 16'1" x 14'0"
<b>Dining</b> 3.149m x 2.850m 10'4" x 9'4"	<b>En-Suite 1</b> 2.177m x 1.978m 7'2" x 6'6"
<b>Kitchen</b> 3.982m x 2.850m 13'1" x 9'4"	<b>Bedroom 2</b> 3.064m x 3.576m 10'1" x 11'9"
<b>Family</b> 3.141m x 2.850m 10'4" x 9'4"	<b>En-Suite 2</b> 2.015m max x 1.860m max 6'7" x 6'1"
<b>WC</b> 0.850m x 1.955m 2'9" x 6'5"	<b>Bedroom 3</b> 3.713m x 2.911m 12'2" x 9'7"
<b>Laundry</b> 2.252m x 1.955m 7'5" x 6'5"	<b>Bedroom 4</b> 3.284m x 2.911m max 10'9" x 9'7"
	<b>Bedroom 5</b> 3.639m max x 2.633m max 11'11" x 8'8"
	<b>Bathroom</b> 2.603m max x 1.870m 8'6" x 6'2"

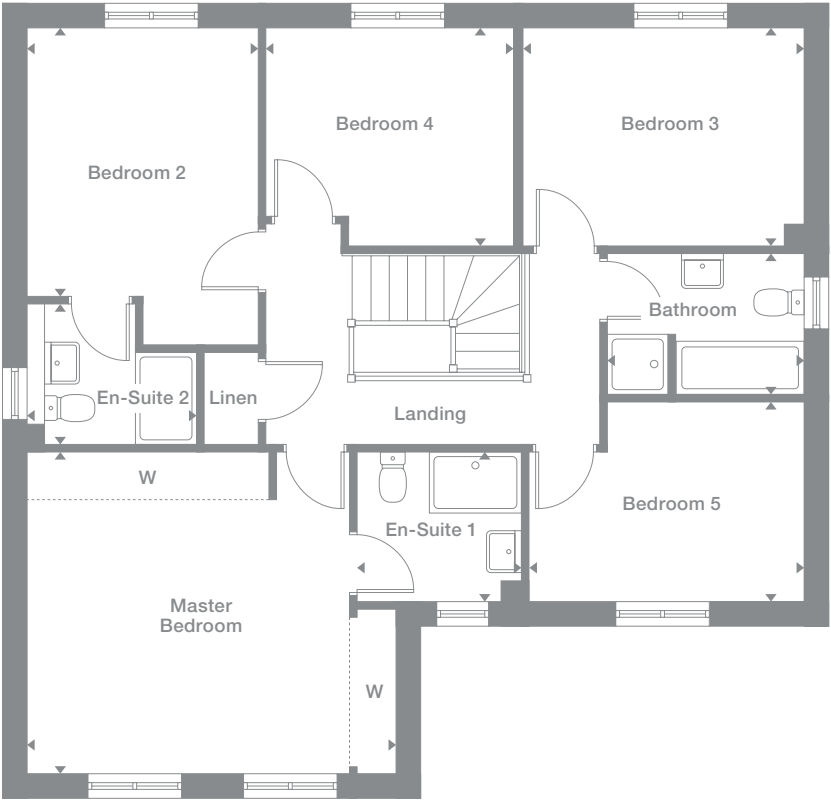
<b>Plots</b> 2*, 11, 32*, 75, 79*, 97*, 120, 133*, 161	<b>Floor Space</b> 1,679 sq ft
--	-----------------------------------



Ground Floor



First Floor



Photography represents typical Miller Homes' interiors and exteriors. All plans in this brochure are not drawn to scale and are for illustrative purposes only. Consequently, they do not form part of any contract. Room layouts are provisional and may be subject to alteration. Please refer to the 'Important Notice' section at the back of this brochure for more information.

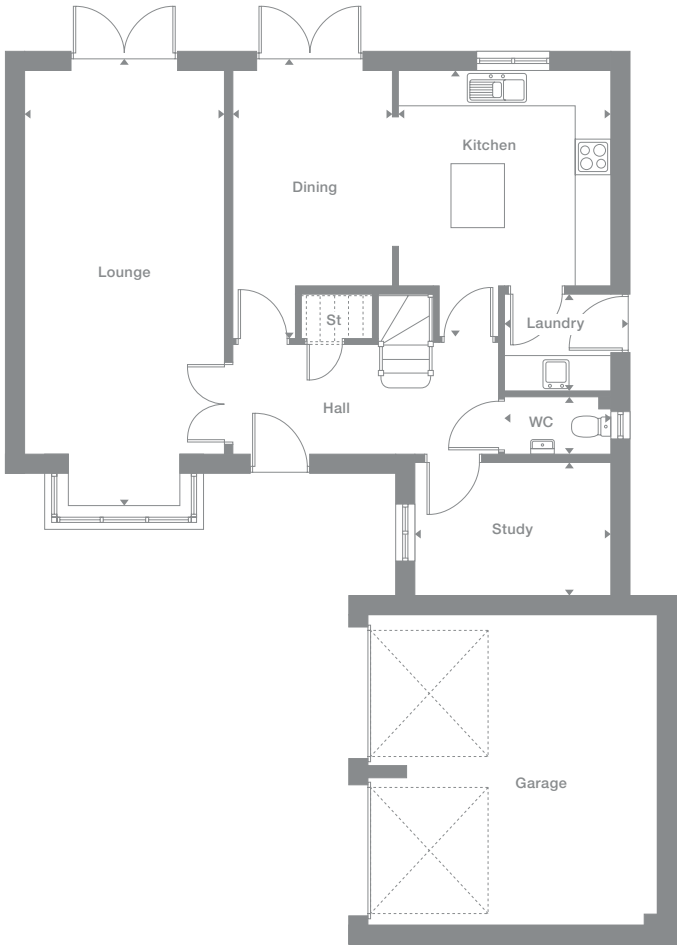
\* Plots are a mirror image of plans shown above  
† Garage personnel door option

# Shakespeare

### Overview

An exciting succession of impressive features, from the stylishly divided kitchen and dining room through to the luxurious en-suite master bedroom with its separate dressing area, emphasise the outstanding quality of this superior home.

### Ground Floor



### Ground Floor

- Lounge**  
3.400m x 7.415m max  
11'2" x 24'4"
- Dining**  
2.700m x 3.640m  
8'10" x 11'11"
- Kitchen**  
3.607m x 3.640m  
11'10" x 11'11"
- WC**  
1.815m x 0.989m  
5'11" x 3'3"
- Laundry**  
1.815m x 1.643m  
5'11" x 5'5"
- Study**  
3.328m x 2.245m  
10'11" x 7'4"

### First Floor

- Master Bedroom**  
4.901m max x 4.706m max  
16'1" x 15'5"
- En-Suite 1**  
2.603m max x 2.438m max  
8'6" x 8'0"
- Dressing**  
1.998m x 2.438m max  
6'7" x 8'0"
- Bedroom 2**  
2.900m x 3.697m  
9'6" x 12'2"
- En-Suite 2**  
1.700m max x 2.313m max  
5'7" x 7'7"
- Bedroom 3**  
3.400m x 3.215m  
11'2" x 10'7"
- Bedroom 4**  
3.400m x 3.207m  
11'2" x 10'6"
- Bedroom 5**  
3.433m x 2.689m max  
11'3" x 8'10"
- Bathroom**  
1.700m x 2.306m  
5'7" x 7'7"

### Plots

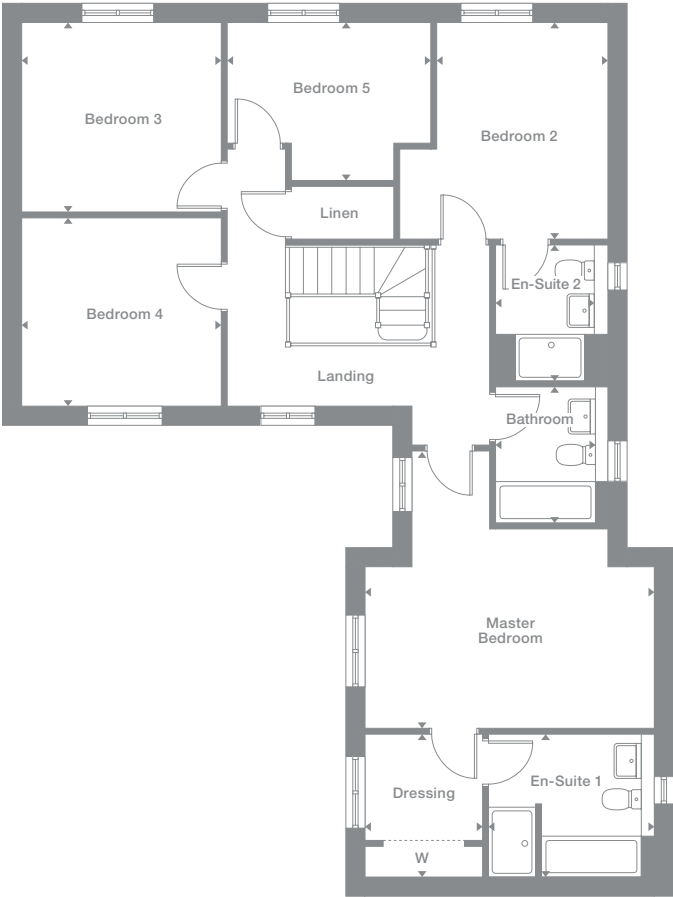
- 4, 15\*,  
19, 78\*,  
86\*, 91\*,  
98, 103\*,  
117\*, 118,  
126, 136\*,  
164\*, 174\*

### Floor Space

1,876 sq ft



### First Floor



Photography represents typical Miller Homes' interiors and exteriors. All plans in this brochure are not drawn to scale and are for illustrative purposes only. Consequently, they do not form part of any contract. Room layouts are provisional and may be subject to alteration. Please refer to the 'Important Notice' section at the back of this brochure for more information.

\* Plots are a mirror image of plans shown above

# The Miller Difference

“Buying a property is one of the most important decisions in life and I am delighted that Miller Homes made it an easy one for me.”

Chris Mackenzie  
Miller Home Owner

“We are so impressed with the exceptional customer service and quality of our home that we’ve recommended Miller Homes to a friend.”

Helen Moscrop  
Miller Home Owner

### The Miller Difference

We’re enormously proud of the homes we’ve been building for the last 80 years, and throughout that time we’ve been listening to our customers and learning from them. From insisting on the best workmanship and the highest quality materials right through to recognising our responsibilities to the environment.

During this time we’ve seen many generations of families enjoy our homes and developments, and we’ve seen the happy, thriving communities they’ve become.

### Trust

For us, the most important people are the customers who choose our homes in which to build their future. Their satisfaction and confidence in us, from our very first meeting onwards, is a key measure of our success.

We’re proud of the independent surveys that consistently show our high levels of customer satisfaction. That’s the real barometer of our quality and our service.

### Helping where we can

We invest everything into your customer journey – it’s designed not just to please you, but to exceed your expectations.

When you become a Miller customer, we’ll listen to you right from the start. From the day you first look around a showhome until long after you’ve moved in, we’re here to offer help and support. We’ve been doing this a long time so we have a vast amount of experience to draw on.

We don’t want you to just be satisfied, we want you to be proud of your new home and delighted by the whole experience. We want you to recommend us, too.

### Pushing up standards

We frequently win awards for the quality of our homes. For their generous specification, skilful construction, beautiful locations, and for the teams that build them. We are acknowledged experts in the field. You can see the quality of our product and you will notice the quality of our service as we guide you through the many different ways of buying your home. It’s a customer journey that has taken 80 years to perfect.

We know the importance of workmanship and job satisfaction. We look after our teams, we train and employ the best people and we reward safe and careful practice.

### Keeping you involved

First you’ll meet your sales adviser who will give you any help you need in choosing and buying your home. Then your site manager, who will supervise the build of your home and answer your questions along the way.

We’ll invite you to a pre-plaster meeting with your site manager during the construction of your new home, where you’ll get to see, first hand, the attention to detail, care and craftsmanship involved.

Wherever practical, we ask you to choose your own kitchen and bathroom including your own tiles, worktops, appliances and other options. Your home becomes personal to you long before we’ve finished building it.

### A Better Place

We don’t just create more homes, we enhance locations with our developments. Places where people will make friends, enjoy family life and take pride in their neighbourhoods and surroundings. We even provide a unique [www.mymillerhome.com](http://www.mymillerhome.com) website to keep you up to date on the build progress of your home and to help you get to know the area, your neighbours and live more sustainably once you’ve moved in.

### For your future

For us, success is building exceptional homes, in sustainable communities. And that’s how we’ve built a business that goes from strength to strength.



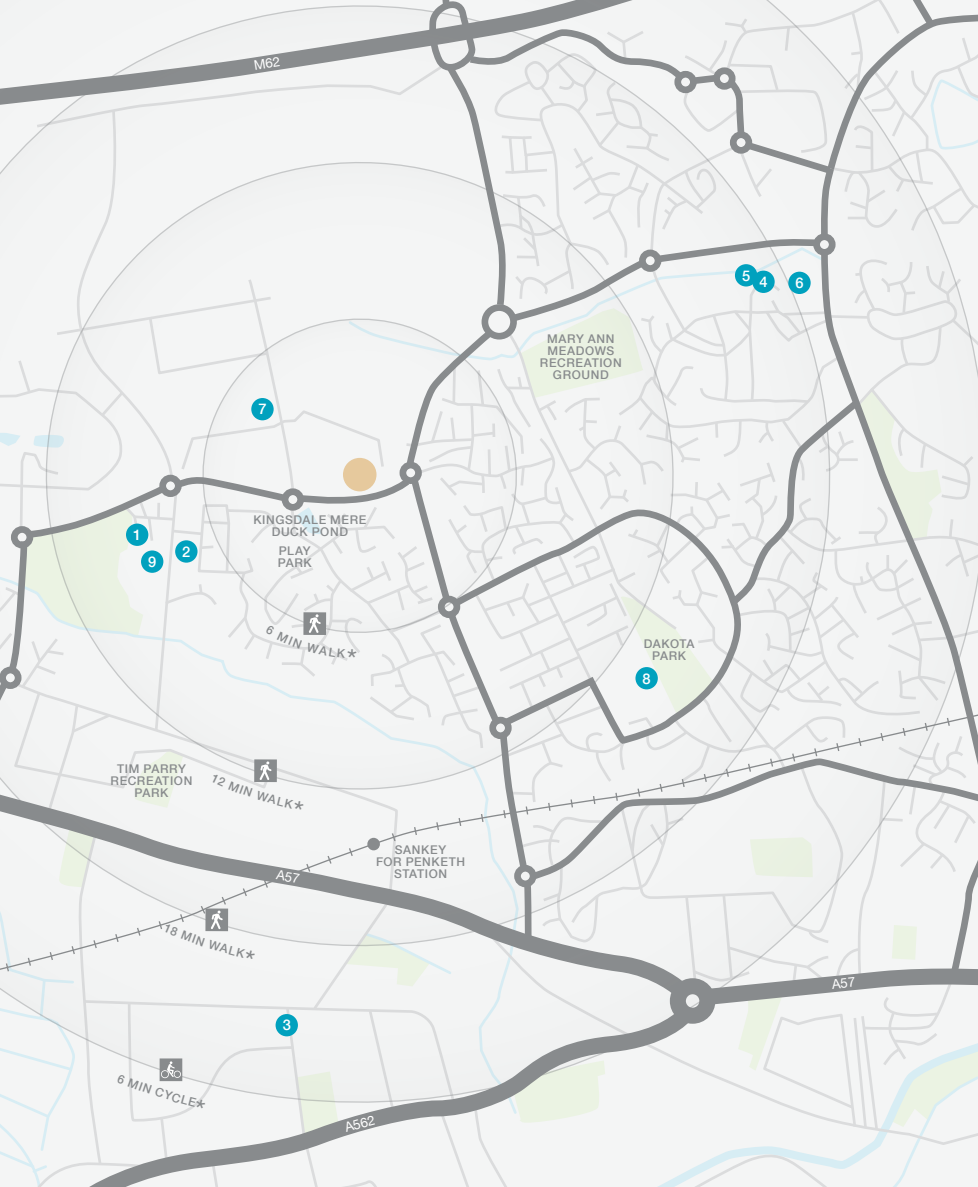
When you leave the car at home and explore the local area by foot or bicycle, you get to know it so much better. And by using local shops and services, you'll help to keep the neighbourhood vibrant and prosperous. Every place has its own personality, and once you move in you'll soon find your favourite walks, and the shops you like best. As a starting point this map shows some of the most useful features and services within a short stroll or bike ride.

Shops in the area include a pharmacy in Barrow Hall Lane and a large Sainsbury store. A little further away, the Westbrook Centre incorporates a major Asda supermarket, a pharmacy and other smaller shops, a library and a 10-screen Odeon cinema. It is also the location of The Westbrook Medical Centre and a dental surgery. A little further north, the Gemini Retail Park includes major M&S and Ikea stores. There is another small local shopping

centre with a post office around a mile to the south, close to The Woodlands pub where the car park has recycling facilities for most household packaging.

Local schools include Barrow Hall Primary, recently relocated to a new building just a few yards from the houses, which achieved an 'out-standing' assessment for leadership and pupil behaviour in its most recent Ofsted inspection, and Chapelford Village Primary. Both

were recognised as 'good' overall, by Ofsted. Great Sankey High School, less than half a mile away, was described by Ofsted as an outstanding school, enjoyed immensely by pupils. The short trip into Warrington town centre opens up an eclectic choice of shops, pubs, restaurants and cafés, as well as museums and galleries, the Pyramid Arts Centre and the Parr Concert Hall, offering a wide choice of live entertainments and cultural activities.

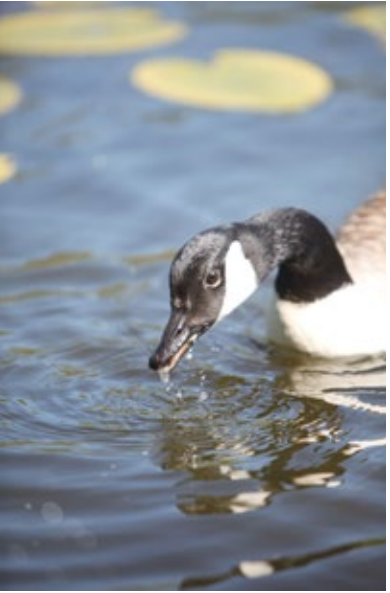


- 1 Great Sankey Leisure Centre, Barrow Hall Lane 01925 724 411
- 2 Barrowhall Pharmacy 103 Barrow Hall Lane 01925 726 907
- 3 Penketh Post Office Honiton Way 01925 728 210
- 4 Westbrook Library Westbrook Crescent 01925 416 561
- 5 Westbrook Medical Centre, 301-302 Westbrook Centre, 01925 645 152
- 6 Mydentist Unit 12, Westbrook Centre 01925 241 142
- 7 Barrow Hall Primary School, Sophia Drive 01925 717 633
- 8 Chapelford Village Primary School, Santa Rosa Boulevard, 01925 712 554
- 9 Great Sankey High School, Barrow Hall Lane 01925 724 118

Mersey Valley Golf and Country Club, Warrington Road 0151 424 6060

\* Times stated are averages based on approximate distances and would be dependent on the route taken.

Based on:  
0.5km = 5 to 7 mins walk  
1.0km = 10 to 14 mins walk  
1.5km = 15 to 21 mins walk  
2.0km = 5 to 8 mins cycle  
2.5km = 6 to 10 mins cycle  
3.0km = 7 to 12 mins cycle  
3.5km = 8 to 14 mins cycle  
4.0km = 10 to 16 mins cycle  
4.5km = 12 to 18 mins cycle  
5.0km = 14 to 20 mins cycle



# How to find us

Development  
Opening Times:  
Thursday - Monday  
10.30am - 5.30pm  
03331 306 148

**From the M62**  
Exit the M62 at junction 8 following signs for Warrington via the A574. At the next two roundabouts take the third exit, following signs for Lingley Mere. At the third roundabout take the third exit again, and the entrance to Woodville Place is on the right, a few yards on.

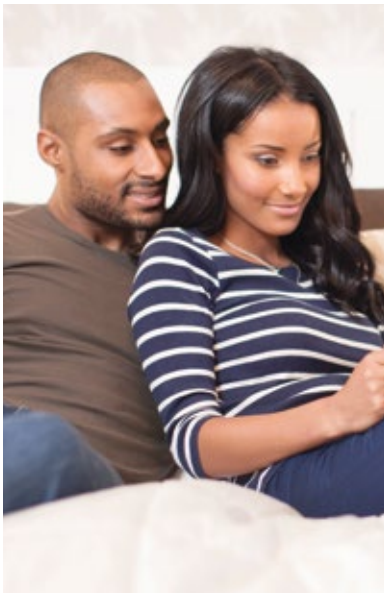
**From Warrington Town Centre**  
Leave the town centre by the A57 Sankey Way, and follow signs for St Helens through two roundabouts, then turn right following tourist signs for Great Sankey Leisure Centre. Carry on through three roundabouts, sign-posted for the M62, and at the fourth roundabout take the first exit, for Lingley Mere. At the next roundabout take the third exit, and the entrance to Woodville Place is on the right, a few yards on.

Sat Nav: WA5 3TX



The homes we build are the foundations of sustainable communities that will flourish for generations to come. We work in harmony with the natural environment, protecting and preserving it wherever we can. With our customers, colleagues and partners, we strive to promote better practices and ways of living. We're playing our part in making the world A Better Place.

a better place®



**Important Notice:**  
Although every care has been taken to ensure the accuracy of all the information given, the contents do not form part of any contract, or constitute a representation or warranty, and, as such, should be treated as a guide only. Interested parties should check with the Sales Adviser and confirm all details with their solicitor. The developer reserves the right to amend the specification, as necessary, without prior notice, but to an equal or higher standard. Please note that items specified in literature and showhomes may depict appliances, fittings and decorative finishes that do not form part of the standard specification. The project is a new development which is currently under construction. Measurements provided have not been surveyed on-site. The measurements have been taken from architect's plans, and, as such, may be subject to variation during the course of construction. Not all the units described have been completed at the time of going to print and measurements and dimensions should be checked with the Sales Adviser and confirmed with solicitors.

**CONSUMER  
CODE FOR  
HOME BUILDERS**  
[www.consumercode.co.uk](http://www.consumercode.co.uk)

the place to be®

## Why Miller Homes?

We've been building homes since 1934, that's three generations of experience. We've learned a lot about people and that's made a big difference to what we do and how we do it.

We're enormously proud of the homes we build, combining traditional craftsmanship with new ideas like low carbon technologies. The big difference is that we don't stop caring once we've finished the building, or when we've sold the house, or even once you've moved in. We're there when you need us, until you're settled, satisfied and inviting your friends round.

This brochure is printed on GaleriArt and contains material sourced from responsibly managed forests. It's certified by the Forest Stewardship Council, an organisation dedicated to promoting responsible forest management and manufacture of wood products. Like paper. It's a small thing, we know, but enough small things make a big difference. Please recycle this brochure and help make that difference.

[millerhomes.co.uk](http://millerhomes.co.uk)

**millerhomes**

*the place to be®*