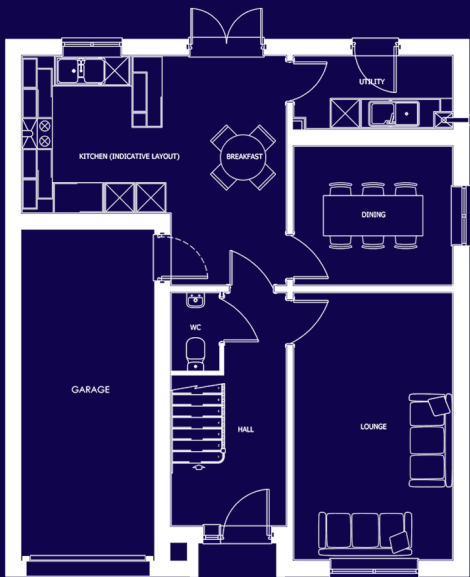
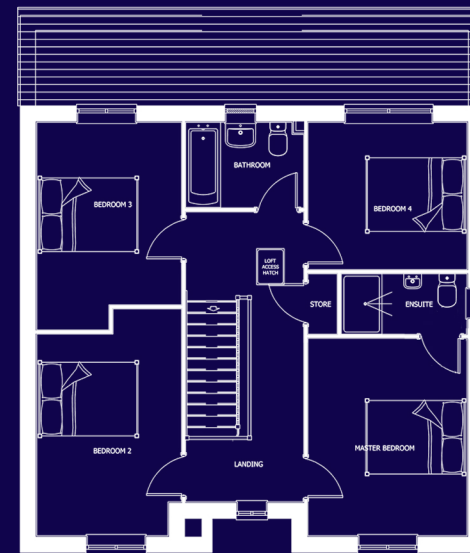


THE SEVERN



A Four bedroom home, perfect for families and professionals



LOUNGE	5.3 X 3.2	17'7 X 10'6
DINING	2.8 X 3.2	9'3 X 10'6
WC	1.6 X 1	5'3 X 3'4
KITCHEN	3.1 X 5.3	10'5 X 17'5
UTILITY	1.4 X 3.2	4'11 X 10'6
GARAGE	6.6 X 2.6	21'8 X 8'9

M BEDROOM	3.9 X 3.2	13' X 10'6
ENSUITE	1.2 X 2.5	4'1 X 8'4
BEDROOM 2	4.0 X 2.9	13'4 X 9'7
BEDROOM 3	3.6 X 2.9	12'1 X 9'7
BEDROOM 4	2.9 X 3.2	9'9 X 10'6
BATHROOM	1.7 X 2.3	5'9 X 7'10



Please refer to your site map for plot numbers for this housetype. These dimensions are correct to within 50mm/2" but should not be used as a basis for the purchase of furnishings. Individual properties may vary from illustrations shown.