

THE LANDWOOD

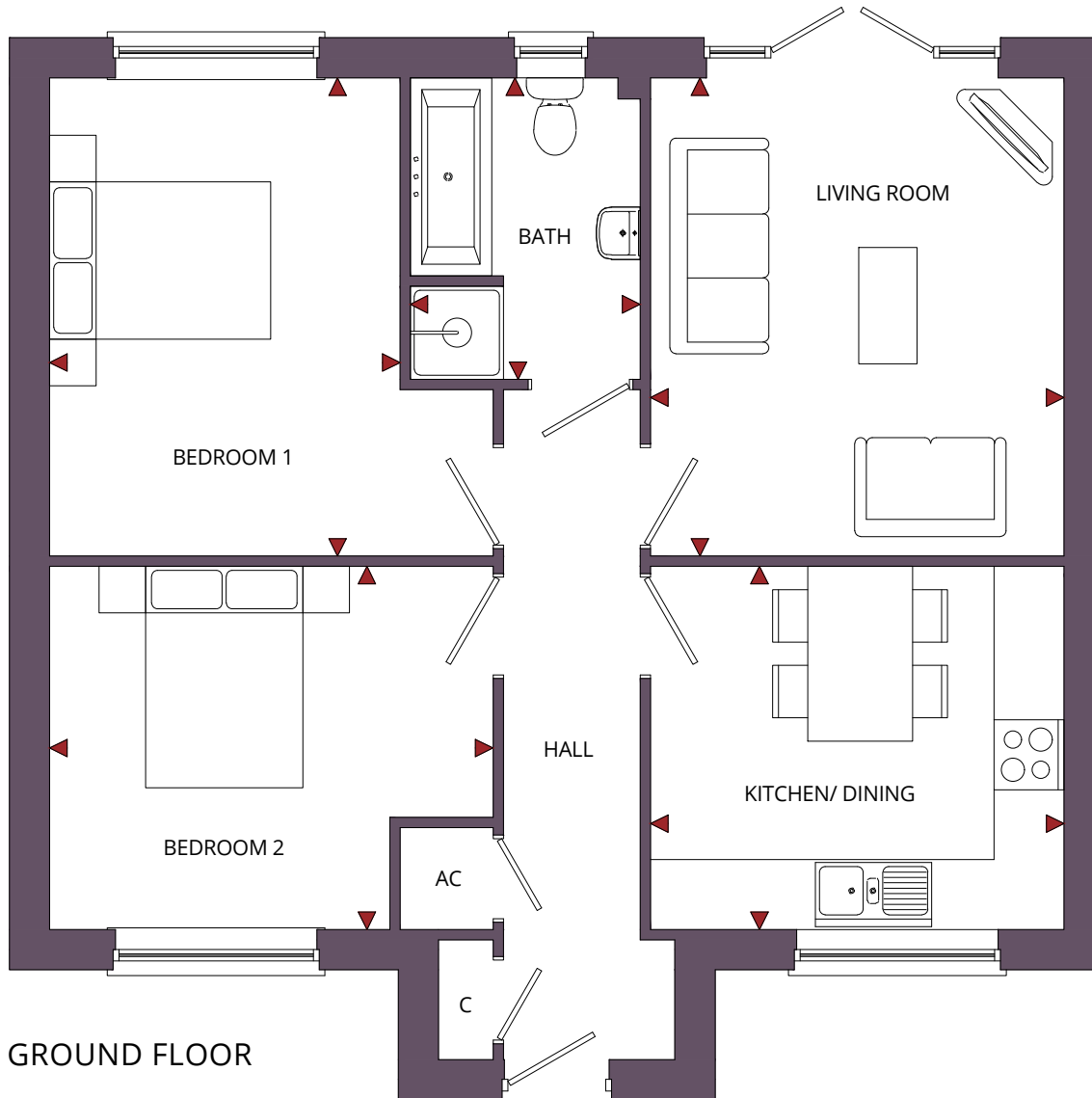
2 BEDROOM BUNGALOW

PLOT 5



THE LANDWOOD

FLOOR PLAN



ROOM	IMPERIAL / "	METRIC / mm
Living Room	11' 8" x 13' 6"	3550 x 4105mm
Kitchen / Dining	11' 8" x 10' 3"	3550 x 3118mm
Bedroom 1	9' 11" x 13' 6"	3009 x 4105mm
Bedroom 2	12' 6" x 10' 3"	3809 x 3118mm
Bathroom	6' 6" x 8' 6"	1975 x 2588mm

TOTAL FLOOR AREA
709ft² / 65.9m²

GROUND FLOOR

THE LANDWOOD

KEY SPECIFICATION

- Constructed using Energy Efficient Materials throughout
- High performance Insulation to Grounds Floors, External Walls and Roofs
- Individually Designed Fully Fitted Kitchens with a Choice of Laminate Worktops
- Choice of wall tiles to Kitchen
- Stainless Steel Built Under Single Oven, Glass Induction Hob with Stainless Steel Chimney Hood
- Stainless Steel 1 1/2 Bowl Sink & Tap to Kitchen
- Washing Machine Space & Plumbing Provided
- White Low Energy Efficient LED Downlighters to Kitchen & Bathroom
- Geberit Selnova Sanitaryware & Bristan Prism Brassware
- Family Bathroom with Mira Over Bath Shower & Shower Screen
- Full Height Tiling around Bath with Tiled splashback to Basin
- Choice of Ceramic Wall Tiles
- Worcester Bosch Energy Efficient Air Source Heat Pump Reducing CO2 Emissions and Energy Bills
- White Towel Radiator to Bathroom
- Waste Water Energy Efficient Heat Recovery to Bath
- TV Point to Living Room and all Bedrooms
- Telephone Point to Living Room, & Bedroom 1
- Power Points with High Performance RCB Protection
- External PIR Lighting to all Front/Rear Doors
- Mains Powered Smoke Alarm to Hall & Landing with Battery Back Up
- White Internal Doors with Chrome Ironmongery
- Storage Cupboard to Hallway
- Double Glazed UPVC Anthracite Grey Windows & French Doors with Energy Efficient Glazing
- 7.3KW Electric Vehicle Car Charging Point
- Landscaped Front Gardens and Rear Paved Patio area
- Double Garage with Lighting & Power Points & Additional Off Road Parking
- Electrically Operated Up and Over Garage Door
- 10 Year LABC Structural Warranty

