

The Henley

Four Bedroom Home



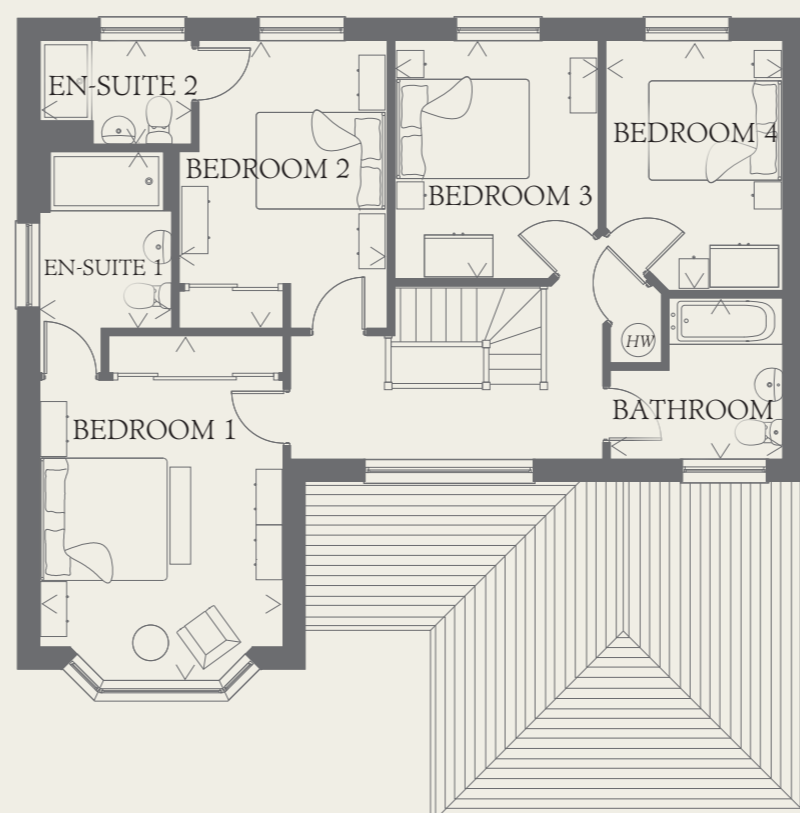
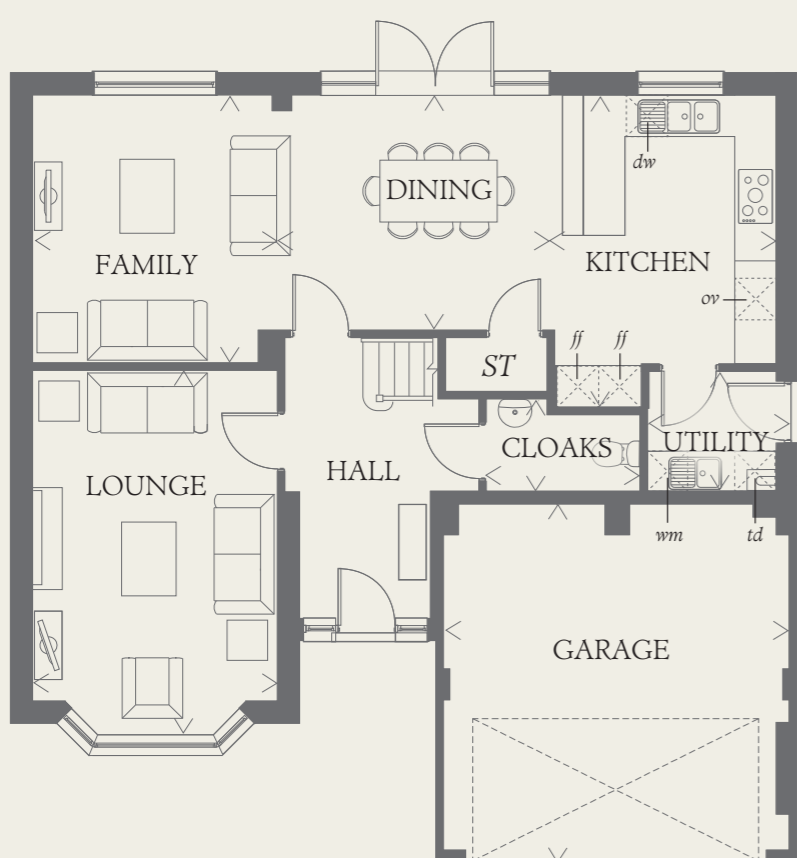
As an executive home, the Henley is undeniably impressive, with a double garage, two en-suite bedrooms and thirty-six foot family dining and kitchen area. A generously proportioned home of real quality and character.

GROUND FLOOR

LOUNGE	17'7" x 11'11"	5.37x3.63m
FAMILY	13'1" x 11'9"	3.98x3.58m
DINING	14'2" x 11'5"	4.32x3.49m
KITCHEN	15'2" x 10'4"	4.62x3.16m
UTILITY	6'3" x 5'9"	1.90x1.79m
CLOAKS	7'6" x 4'5"	2.28x1.38m
GARAGE	17'7" x 17'0"	5.35x5.18m

FIRST FLOOR

BEDROOM 1	16'10" x 11'11"	5.12x3.63m
EN-SUITE 1	8'6" x 6'6"	2.63x1.98m
BEDROOM 2	14'1" x 10'3"	4.29x3.11m
EN-SUITE 2	7'4" x 5'1"	2.27x1.55m
BEDROOM 3	11'8" x 9'11"	3.55x3.02m
BEDROOM 4	12'2" x 8'7"	3.71x2.63m
BATHROOM	8'5" x 7'11"	2.57x2.41m



Customers should note this illustration is an example of the Henley house type. All dimensions indicated are approximate and the furniture layout is for illustrative purposes only. Homes may be 'handed' (mirror image) versions of the illustrations, and may be detached, semi-detached or terraced. Materials used may differ from plot to plot including render and roof tile colours. Detailed plans and specifications are available for inspection for each plot at our Sales Centre during working hours and customers must check their individual specifications prior to making a reservation.

< Denotes where dimensions are taken from. All wardrobes are subject to site specification. Please see Sales Consultant for further details.

KEY

Hob

Oven

Fridge/freezer

Washing machine space

Dishwasher space

Tumble dryer space

Hot water cylinder

Cupboard

