



The Amberley

Three Bedroom Home





The Amberley

Three Bedroom Home

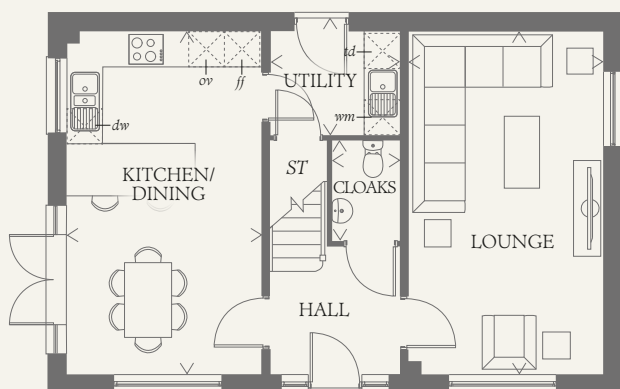




The Amberley

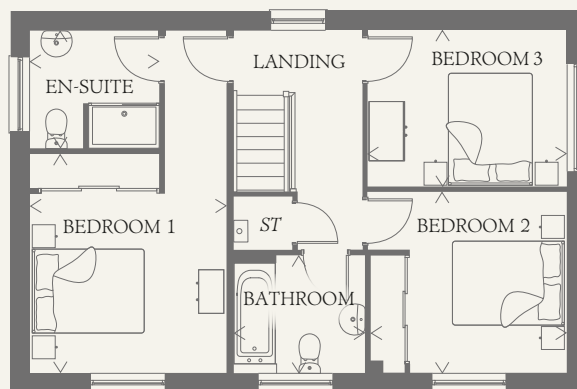
Three Bedroom Home

A beautiful home, the Amberley creates the perfect balance between a peaceful environment and a practical living space. An extensive kitchen/dining area, separate lounge and three double bedrooms, make this home the perfect place to relax after a long day.



GROUND FLOOR

KITCHEN/ DINING	18'11" x 10'9"	5.77 x 3.28 m
LOUNGE	18'11" x 10'9"	5.77 x 3.27 m
UTILITY	7'2" x 5'9"	2.18 x 1.75 m
CLOAKS	5'7" x 3'9"	1.70 x 1.14 m



FIRST FLOOR

BEDROOM 1	12'2" x 10'10"	3.70 x 3.31 m
EN-SUITE	7'2" x 6'7"	2.18 x 2.00 m
BEDROOM 2	10'10" x 10'0"	3.30 x 3.05 m
BEDROOM 3	11'0" x 8'8"	3.35 x 2.63 m
BATHROOM	7'3" x 6'6"	2.22 x 1.98 m

CONSUMER CODE FOR HOME BUILDERS

www.consumercode.co.uk

Customers should note this illustration is an example of the Amberley house type. All dimensions indicated are approximate and the furniture layout is for illustrative purposes only. Homes may be 'handed' (mirror image) versions of the illustrations, and may be detached, semi-detached or terraced. Materials used may differ from plot to plot including render and roof tile colours. Detailed plans and specifications are available for inspection for each plot at our Sales Centre during working hours and customers must check their individual specifications prior to making a reservation.

KEY

Hob	<i>td</i> Tumble dryer space
<i>ov</i> Oven	<i>ST</i> Cupboard
<i>ff</i> Fridge/freezer	
<i>wm</i> Washing machine space	
<i>dw</i> Dishwasher space	

Redrow.co.uk give notice that the property particulars and related information on this site, whilst believed to be accurate, are set as a general outline for guidance only. Intending purchasers should not rely on them as statements or representations of fact, but must satisfy themselves before physical inspection as to their availability, or by physical inspection of the property in question or otherwise as to their accuracy or fit for purpose. Consequently, no information displayed on this site (or linked sites) constitutes or forms part of a contract. Materials used may differ from plot to plot including render and roof tile colours.

< Denotes where dimensions are taken from. All wardrobes are subject to site specification. Please see Sales Consultant for further details.

THINK 207049. EF_AMBY_DM.8