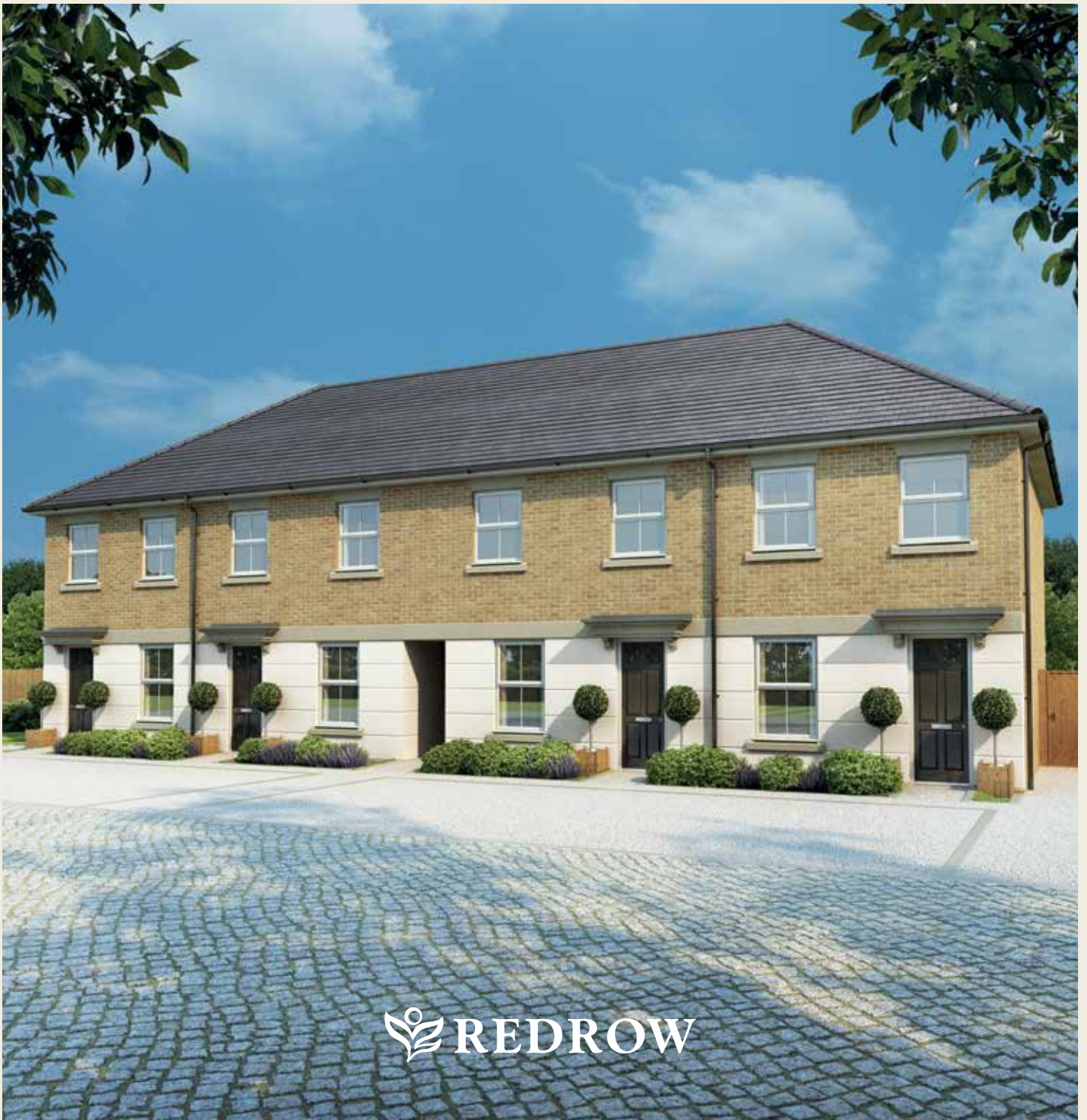




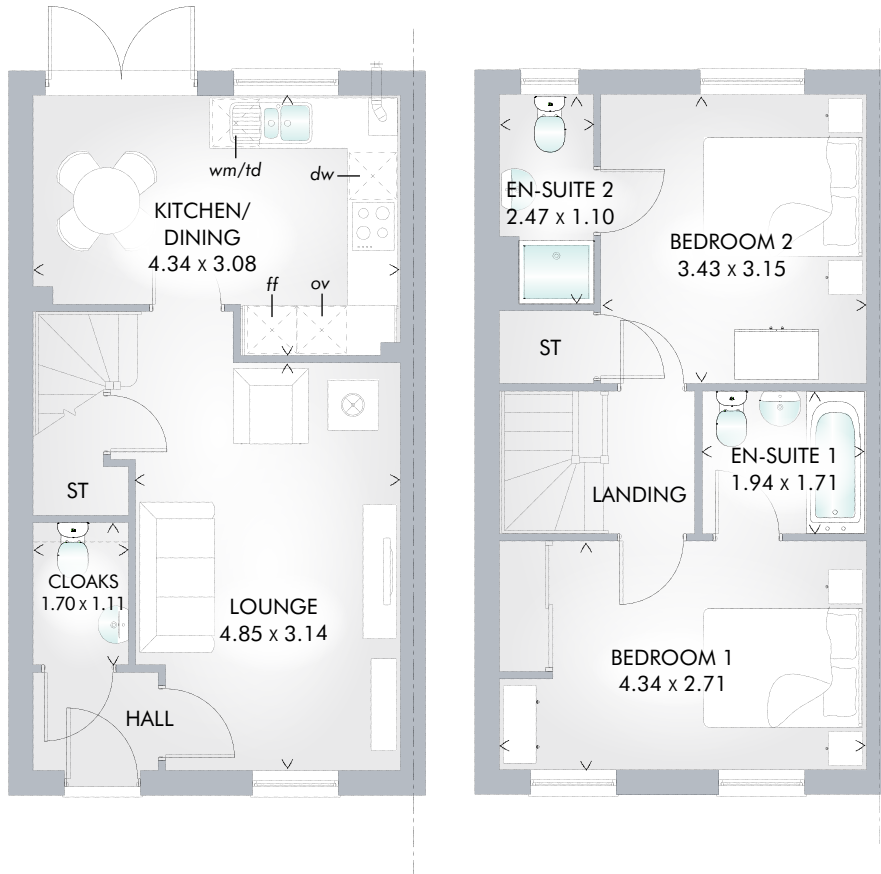
CADOGAN

TWO BEDROOM HOME



 REDROW

CADOGAN



TWO BEDROOM HOME

Two double bedrooms, both including en-suites, plus a large lounge and bright kitchen/dining room make the Cadogan ideal for a first home, shared between friends or for when you have just started your family and need a little more space.

GROUND FLOOR

Lounge	15'11" x 10'4"	4.85 x 3.14 m
Kitchen/ Dining	14'3" x 10'1"	4.34 x 3.08 m
Cloaks	5'7" x 3'8"	1.70 x 1.11 m

FIRST FLOOR

Bedroom 1	14'3" x 8'11"	4.34 x 2.71 m
En-suite 1	6'4" x 5'7"	1.94 x 1.71 m
Bedroom 2	11'3" x 10'4"	3.43 x 3.15 m
En-suite 2	8'1" x 3'7"	2.47 x 1.10 m

CONSUMER CODE FOR HOME BUILDERS

www.consumercode.co.uk

Customers should note this illustration is an example of the Cadogan house type. All dimensions indicated are approximate and furniture layout is for illustrative purposes only. Homes may be a 'handed' (mirror image) versions of the illustrations, and may be detached, semi-detached or terraced. Materials used may differ from plot to plot including render and roof tile colours. Detailed plans and specifications are available for inspection for each plot at our Sales Centre during working hours and customers must check their individual specifications prior to making reservation.

KEY Hob ov Oven ff Fridge/freezer wm Washing machine dw Dishwasher td Tumble dryer space ST Cupboard

< Denotes where dimensions are taken from. All wardrobes are subject to site specification. Please see Sales Consultant for further details.

Traditional homes, built the way you remember

REDROW
A BETTER WAY TO LIVE