


*Wain*  
HOMES



A place that lets you be you.  
That says everything about you.  
That feels good, feels right.  
Where life can be beautifully imperfect.  
And you love every moment of it.

YOUR KIND OF *perfect*

# LINLEY GRANGE DEVELOPMENT PLAN



## 3 Bedroom Homes

- Shackleby (SK)
- Trevithick (TR)

## 4 Bedroom Homes

- Eton (E)
- Jenner (J)
- Newton (N)
- Oxford (OX)
- Shakespeare (SH)
- Stephenson (ST)
- Wrenton (WT)
- Wrennick (WK)

## Affordable Homes

Location of Affordable Homes is indicative

- Baird (B)
- Bell (BL)
- Chinley (CH)
- \* Affordable Homes
- Denotes plots with additional windows

# LINLEY GRANGE SPECIFICATION

ETON | NEWTON | OXFORD | SHAKESPEARE | STEPHENSON

## KITCHENS

- Luxury fitted kitchens from our Standard Range with Soft Close Mechanisms in a Choice of Finishes\*\*
- Laminated Worktops to Kitchen and Utility with Matching Upstands in a Choice of Finishes
- 1 1/2 Bowl Inset Stainless Steel Sink & Tap to the Kitchen
- Single Bowl Stainless Steel Sink & Standard Tap to the Utility (Oxford, Shakespeare and Stephenson only)
- Stainless Steel AEG Double Oven, AEG 5 Ring Gas Hob with Silver Glass Splashback and Extractor Hood
- Integrated Zanussi Fridge Freezer
- Chrome Sockets and Switches to Kitchen and Adjoining Open Plan Areas
- Chrome Downlights to Kitchen Area (not to Adjoining Open Plan Areas)

## BATHROOMS

- Roca Debba Sanitaryware in White with Full Pedestals and Back To Wall WCs with Soft Close Seats
- Methven Insignia Brassware
- Methven Kiri Cool to Touch Thermostatic Shower with Satinjet Handset
- Bathrooms and En-Suites to be Half Tiled with a Choice of Porcelanosa Wall Tiles
- Shower Enclosures to be Fully Tiled with a Choice of Porcelanosa Wall Tiles
- Roca Seville Bath
- Chrome Heated Towel Rail to Bathroom and En-Suites
- Chrome Downlights to Bathrooms and En-Suites

## BEDROOMS

- Television Aerial Point to Master Bedroom
- Telephone Point to Master Bedroom
- Cat 5 Data Point to Master Bedroom+
- USB Sockets to All Bedrooms

## HEATING SYSTEM

- Gas Central Heating with High Efficiency Boiler and Panel Radiators
- Honeywell T6 Smart Thermostat (Eton, Oxford and Shakespeare only)
- Honeywell T3 Thermostat (Newton and Stephenson only)

## OTHER INTERNAL FEATURES

- All Ceilings to be Skim Finished and Painted White
- All Walls to be Skim Finished and Painted Soft Cream
- All Woodwork to be Finished in White Gloss
- Staircase, including Newel Posts and Spindles to be Finished in White Gloss
- All Handrails and Newel Caps to be Finished in Oak
- Vertical 5 Panel Internal Doors to be Finished in White Gloss with Chrome Effect Door Furniture
- Ultrafast Hard Wired Fibre Broadband\* ♦
- Virgin Media points ♦
- CAT 5 Data Point to Lounge+
- White Sockets and Switches Throughout (excluding Kitchen & Adjoining Open Plan Areas)
- Television Aerial Socket to Lounge
- Telephone Point to Lounge
- USB Sockets to Lounge, Kitchen and Study (where applicable)
- Hard Wired Smoke Detectors with Battery Backup
- Risco Smart Wireless Alarm System^

## EXTERNAL FEATURES

- White PVCu Windows and Rear/Side/French Doors
- White PVCu Fascias and Soffits
- Black Rainwater Goods
- Pebble Composite Front Door
- External Lights to Front and Rear
- 32 AMP / 7.3kW Car Charging Point
- Power and Lighting to all Garages
- White Garage Doors
- Gardens Landscaped to Front
- Gardens to Rear Rotavated
- External Tap to Rear
- 1.8m Close Boarded Divisional Fencing to Rear Garden ▲

## WARRANTIES

- 10 Year NHBC Buildmark Warranty
- 2 Year Wain Homes Warranty

\*\* Upgraded Kitchen Choices available \*Ultrafast Fibre is the latest in broadband technology that sees your broadband speeds faster than ever before – the next generation of internet, as fibre optic technology evolves, you'll already have everything you need in your property to get the benefits ♦ Please note these services may be not fully active at completion stage until the relevant works have been completed by the service provider. The buyer is responsible for ordering their own phoneline and internet connection. + allowing your smart TV or Console direct connectivity to Ultrafast Broadband. ^Smart features subject to subscription ▲ Unless stipulated otherwise on the working drawings.



Wain Homes abides by the New Homes Quality Code, an independent industry code introduced to champion quality new homes and better consumer outcomes. Dimensions shown are internal finished dimensions which may vary as each home is built individually and the precise internal finishes may not always be the same. Please be aware that window and door positions could vary due to plot orientation. It is essential to view the working drawings with our Sales Executive for plot specific detail. Enquire for further information. Wain Homes Policy is continuous product and specification development. Every effort has been made to ensure the accuracy of the information provided in this leaflet at the date of publication but it may be subject to change without notice. Please consult with our Sales Executive to obtain the current specification. You should take appropriate steps to verify any information upon which you wish to rely. The sizes indicated are not intended to be used for carpet sizes, appliance spaces or items of furniture. Elevation treatments may vary to those shown. These particulars are intended for guidance only and their accuracy is not guaranteed. They do not constitute a contract, part of a contract or warranty. (September 2023)





# LINLEY GRANGE SPECIFICATION

BAIRD | BELL | JENNER | SHACKLEBY | TREVITHICK | WRENNICK | WRENTON

## KITCHENS

- Luxury fitted kitchens from our Standard Range with Soft Close Mechanisms in a Choice of Finishes\*\*
- Laminated Worktops to Kitchen and Utility with Matching Upstands in a Choice of Finishes
- 1 1/2 Bowl Inset Stainless Steel Sink & Tap to the Kitchen
- Stainless Steel Zanussi Single Oven, Zanussi 4 Ring Gas Hob with Silver Glass Splashback and Extractor Hood
- Integrated Zanussi Fridge Freezer (4 bedroom properties only)
- Chrome Sockets and Switches to Kitchen and Adjoining Open Plan Areas
- Chrome Downlights to Kitchen Area (not to Adjoining Open Plan Areas)

## BATHROOMS

- Roca Debba Sanitaryware in White with Full Pedestals and Back To Wall WCs with Soft Close Seats
- Methven Insignia Brassware
- Methven Kiri Cool to Touch Thermostatic Shower with Satinjet Handset
- Bathrooms and En-Suites to be Half Tiled with a Choice of Porcelanosa Wall Tiles
- Shower Enclosures to be Fully Tiled with a Choice of Porcelanosa Wall Tiles
- Roca Seville Bath
- Shower and Screen to be Fitted over the Bath with Additional Tiling
- Chrome Heated Towel Rail to Bathroom and En-Suites
- Chrome Downlights to Bathrooms and En-Suites

## BEDROOMS

- Television Aerial Point to Master Bedroom
- Telephone Point to Master Bedroom
- Cat 5 Data Point to Master Bedroom+
- USB Sockets to All Bedrooms

## HEATING SYSTEM

- Gas Central Heating with High Efficiency Boiler and Panel Radiators
- Honeywell T3 Thermostat

## OTHER INTERNAL FEATURES

- All Ceilings to be Skim Finished and Painted White
- All Walls to be Skim Finished and Painted Soft Cream
- All Woodwork to be Finished in White Gloss
- Staircase, including Newel Posts and Spindles to be Finished in White Gloss
- All Handrails and Newel Caps to be Finished in Oak
- Vertical 5 Panel Internal Doors to be Finished in White Gloss with Chrome Effect Door Furniture
- Ultrafast Hard Wired Fibre Broadband\* ♦
- Virgin Media points ♦
- CAT 5 Data Point to Lounge+
- White Sockets and Switches Throughout (excluding Kitchen & Adjoining Open Plan Areas)
- Television Aerial Socket to Lounge
- Telephone Point to Lounge
- USB Sockets to Lounge, Kitchen
- Hard Wired Smoke Detectors with Battery Backup

## EXTERNAL FEATURES

- White PVCu Windows and Rear/Side/French Doors
- White PVCu Fascias and Soffits
- Black Rainwater Goods
- Pebble Composite Front Door
- External Lights to Front and Rear
- 32 AMP / 7.3kW Car Charging Point
- Power and Lighting to all Garages
- White Garage Doors (where applicable)
- Gardens Landscaped to Front
- Gardens to Rear Rotavated
- External Tap to Rear
- 1.8m Close Boarded Divisional Fencing to Rear Garden ▲

## WARRANTIES

- 10 Year NHBC Buildmark Warranty
- 2 Year Wain Homes Warranty

\*\* Upgraded Kitchen Choices available \*Ultrafast Fibre is the latest in broadband technology that sees your broadband speeds faster than ever before – the next generation of internet, as fibre optic technology evolves, you'll already have everything you need in your property to get the benefits ♦ Please note these services may be not fully active at completion stage until the relevant works have been completed by the service provider. The buyer is responsible for ordering their own phoneline and internet connection. + allowing your smart TV or Console direct connectivity to Ultrafast Broadband. ^Smart features subject to subscription ▲ Unless stipulated otherwise on the working drawings.



Wain Homes abides by the New Homes Quality Code, an independent industry code introduced to champion quality new homes and better consumer outcomes. Dimensions shown are internal finished dimensions which may vary as each home is built individually and the precise internal finishes may not always be the same. Please be aware that window and door positions could vary due to plot orientation. It is essential to view the working drawings with our Sales Executive for plot specific detail. Enquire for further information. Wain Homes Policy is continuous product and specification development. Every effort has been made to ensure the accuracy of the information provided in this leaflet at the date of publication but it may be subject to change without notice. Please consult with our Sales Executive to obtain the current specification. You should take appropriate steps to verify any information upon which you wish to rely. The sizes indicated are not intended to be used for carpet sizes, appliance spaces or items of furniture. Elevational treatments may vary to those shown. These particulars are intended for guidance only and their accuracy is not guaranteed. They do not constitute a contract, part of a contract or warranty. (September 2023)



# LINLEY GRANGE SPECIFICATION

## AFFORDABLE HOMES

### KITCHENS

- Luxury Fitted Kitchens from our Standard Range with Soft Close Mechanisms in a Choice of Finishes\*\*
- Laminated Worktops to Kitchen with Matching Upstands in a Choice of Finishes
- 1 ½ Bowl Inset Stainless Steel Sink & Tap to the Kitchen
- Stainless Steel Zanussi Single Oven
- Zanussi 4 Ring Gas Hob with Silver Glass Splashback and Extractor Hood (Houses only)
- Zanussi 4 Ring Ceramic Hob (to Apartments only)
- Chrome Sockets and Switches to Kitchen and Adjoining Open Plan Areas

### BATHROOMS

- Roca Debba Sanitaryware in White with Full Pedestals and Back To Wall WCs with Soft Close Seats
- Methven Insignia brassware
- Methven Kiri Cool to Touch Thermostatic Shower with Satinjet Handset over Bath
- Bathrooms to be Half Tiled with a Choice of Porcelanosa Wall Tiles
- Roca Seville bath
- Shower and Screen to be Fitted over the Bath with Additional Tiling
- Chrome Heated Towel Rail to Bathroom
- Deta Downlights to Bathrooms

### BEDROOMS

- Television Aerial Point to Master Bedroom
- Telephone Point to Master Bedroom
- Cat 5 Data Point to Master Bedroom+
- USB Sockets to All Bedrooms

### HEATING SYSTEM

- Gas Central Heating with High Efficiency Boiler and Panel Radiators
- Honeywell T3 Thermostat

### OTHER INTERNAL FEATURES

- All Ceilings to be Skim Finished and Painted White
- All Walls to be Skim Finished and Painted Soft Cream
- All Woodwork to be Finished in White Gloss
- Staircase, including Newel Posts and Spindles to be Finished in White Gloss
- All Handrails and Newel Caps to be Finished in Oak
- Vertical 5 Panel Internal Doors to be Finished in White Gloss with Chrome Effect Door Furniture
- Ultrafast Hard Wired Fibre Broadband \*♦
- CAT 5 Data Point to Lounge+
- White Sockets and Switches Throughout (excluding Kitchen & Adjoining Open Plan Areas)
- Television Aerial Point to Lounge
- Telephone Point to Lounge
- USB Sockets to Lounge and Kitchen
- Hard Wired Smoke Detectors with Battery Backup

### EXTERNAL FEATURES

- White PVCu Windows and Rear/Side/French Doors
- White PVCu Fascias and Soffits
- Black Rainwater Goods
- Pebble Composite Front Door
- External Lights to Front
- Externals Lights to Rear (Houses only)
- 32 AMP / 7.3kW Car Charging Point
- Gardens Landscaped to Front
- Gardens to Rear Rotavated
- External Tap to Rear
- 1.8m Close Boarded Divisional Fencing to Rear Garden ▲

### WARRANTIES

- 10 Year NHBC Buildmark Warranty
- 2 Year Wain Homes Warranty

\*\* Upgraded Kitchen Choices available \*Ultrafast Fibre is the latest in broadband technology that sees your broadband speeds faster than ever before – the next generation of internet, as fibre optic technology evolves, you'll already have everything you need in your property to get the benefits ♦ Please note these services may be not fully active at completion stage until the relevant works have been completed by the service provider. The buyer is responsible for ordering their own phoneline and internet connection. + allowing your smart TV or Console direct connectivity to Ultrafast Broadband. ^Smart features subject to subscription ▲ Unless stipulated otherwise on the working drawings.



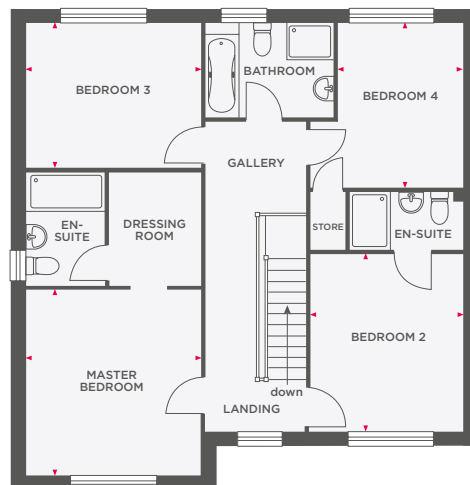
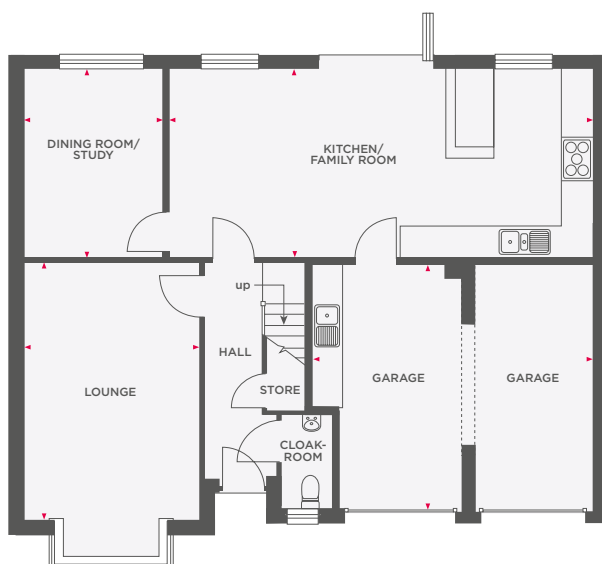
Wain Homes abides by the New Homes Quality Code, an independent industry code introduced to champion quality new homes and better consumer outcomes. Dimensions shown are internal finished dimensions which may vary as each home is built individually and the precise internal finishes may not always be the same. Please be aware that window and door positions could vary due to plot orientation. It is essential to view the working drawings with our Sales Executive for plot specific detail. Enquire for further information. Wain Homes Policy is continuous product and specification development. Every effort has been made to ensure the accuracy of the information provided in this leaflet at the date of publication but it may be subject to change without notice. Please consult with our Sales Executive to obtain the current specification. You should take appropriate steps to verify any information upon which you wish to rely. The sizes indicated are not intended to be used for carpet sizes, appliance spaces or items of furniture. Elevational treatments may vary to those shown. These particulars are intended for guidance only and their accuracy is not guaranteed. They do not constitute a contract, part of a contract or warranty. (September 2023)





# THE ETON

## 4 BEDROOM DETACHED HOME WITH INTEGRAL DOUBLE GARAGE



Lounge	3610 x 5290 (max)	11'10" x 17'4" (max)
Kitchen/Family Room	8752 x 3795	28'8" x 12'5"
Dining Room/Study	2859 x 3795	9'4" x 12'5"
Garage	5771 x 5066 (max)	18'11" x 16'7" (max)

Master Bedroom	3610 x 3813	11'10" x 12'6"
Bedroom 2	3043 x 3640	9'11" x 11'11"
Bedroom 3	3577 x 2935	11'8" x 9'7"
Bedroom 4	2515 x 3310	8'3" x 10'10"



Wain Homes abides by the New Homes Quality Code, an independent industry code introduced to champion quality new homes and better consumer outcomes. Dimensions shown are internal finished dimensions which may vary as each home is built individually and the precise internal finishes may not always be the same. Please be aware that window and door positions could vary due to plot orientation. It is essential to view the working drawings with our Sales Executive for plot specific detail. Enquire for further information. Wain Homes Policy is continuous product and specification development. Every effort has been made to ensure the accuracy of the information provided in this leaflet at the date of publication but it may be subject to change without notice. Please consult with our Sales Executive to obtain the current specification. You should take appropriate steps to verify any information upon which you wish to rely. The sizes indicated are not intended to be used for carpet sizes, appliance spaces or items of furniture. Elevational treatments may vary to those shown. These particulars are intended for guidance only and their accuracy is not guaranteed. They do not constitute a contract, part of a contract or warranty. (September 2023)

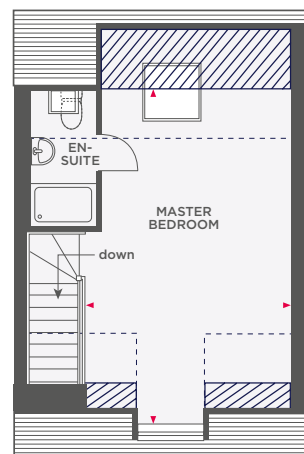
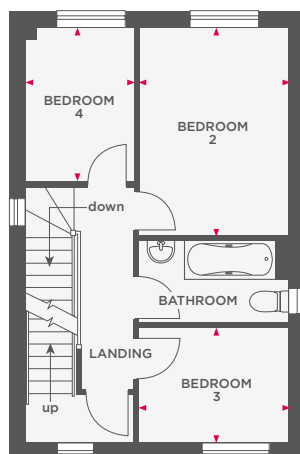
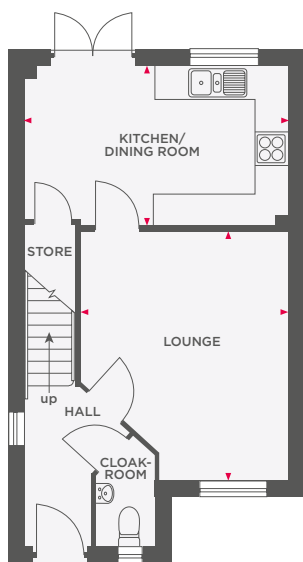






# THE JENNER

4 BEDROOM HOME WITH PARKING



Limited Use Area



Reduced head height below 1.5m

Lounge	3875 x 4600 (max)	12'8" x 15'1" (max)
Kitchen/Dining Room	4845 x 2965 (max)	15'10" x 9'8" (max)

Bedroom 2	2755 x 3840	9'0" x 12'7"
Bedroom 3	2755 x 2100	9'0" x 6'10"
Bedroom 4	1995 x 2840	6'6" x 9'3"

Master Bedroom	3830 x 6350 (max)	12'6" x 20'10" (max)
----------------	-------------------	----------------------



Wain Homes abides by the New Homes Quality Code, an independent industry code introduced to champion quality new homes and better consumer outcomes. Dimensions shown are internal finished dimensions which may vary as each home is built individually and the precise internal finishes may not always be the same. Please be aware that window and door positions could vary due to plot orientation. It is essential to view the working drawings with our Sales Executive for plot specific detail. Enquire for further information. Wain Homes Policy is continuous product and specification development. Every effort has been made to ensure the accuracy of the information provided in this leaflet at the date of publication but it may be subject to change without notice. Please consult with our Sales Executive to obtain the current specification. You should take appropriate steps to verify any information upon which you wish to rely. The sizes indicated are not intended to be used for carpet sizes, appliance spaces or items of furniture. Elevational treatments may vary to those shown. These particulars are intended for guidance only and their accuracy is not guaranteed. They do not constitute a contract, part of a contract or warranty. (September 2023)

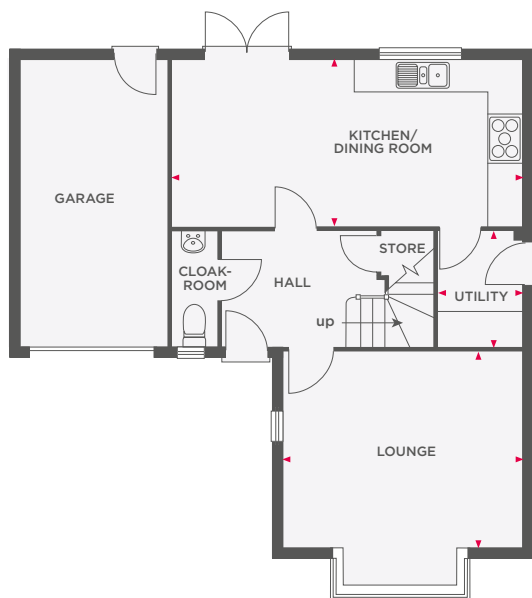




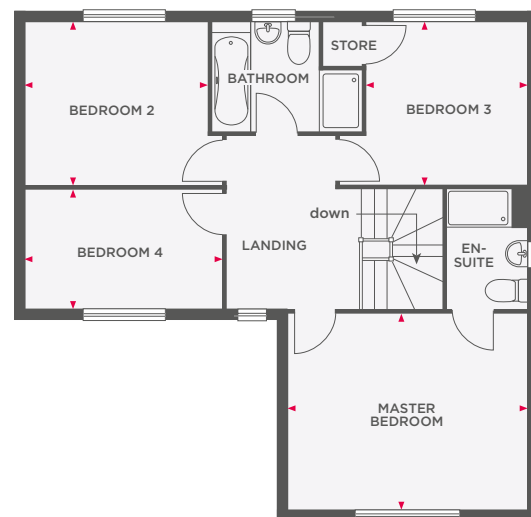


# THE NEWTON

4 BEDROOM DETACHED HOME WITH INTEGRAL GARAGE



Lounge	4285 x 3562 (max)	14'0" x 11'8" (max)
Kitchen/Dining Room	6604 x 2947	21'8" x 9'8"
Utility	1585 x 2088	5'2" x 6'10"



Master Bedroom	4285 x 3619	14'0" x 11'10"
Bedroom 2	3215 x 2955	10'6" x 9'8"
Bedroom 3	3005 x 2989	9'10" x 9'9"
Bedroom 4	3710 x 2138	12'2" x 7'0"



Wain Homes abides by the New Homes Quality Code, an independent industry code introduced to champion quality new homes and better consumer outcomes. Dimensions shown are internal finished dimensions which may vary as each home is built individually and the precise internal finishes may not always be the same. Please be aware that window and door positions could vary due to plot orientation. It is essential to view the working drawings with our Sales Executive for plot specific detail. Enquire for further information. Wain Homes Policy is continuous product and specification development. Every effort has been made to ensure the accuracy of the information provided in this leaflet at the date of publication but it may be subject to change without notice. Please consult with our Sales Executive to obtain the current specification. You should take appropriate steps to verify any information upon which you wish to rely. The sizes indicated are not intended to be used for carpet sizes, appliance spaces or items of furniture. Elevational treatments may vary to those shown. These particulars are intended for guidance only and their accuracy is not guaranteed. They do not constitute a contract, part of a contract or warranty. (September 2023)

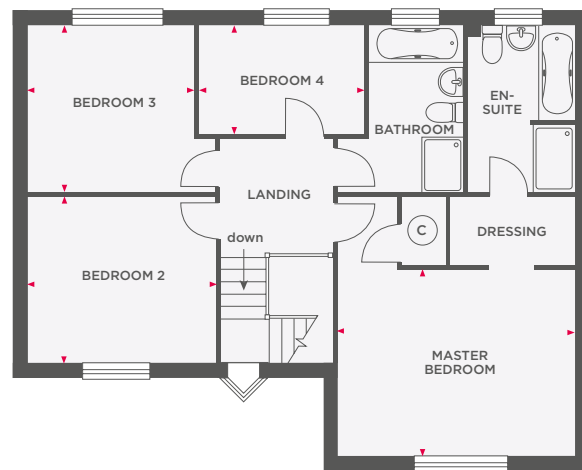
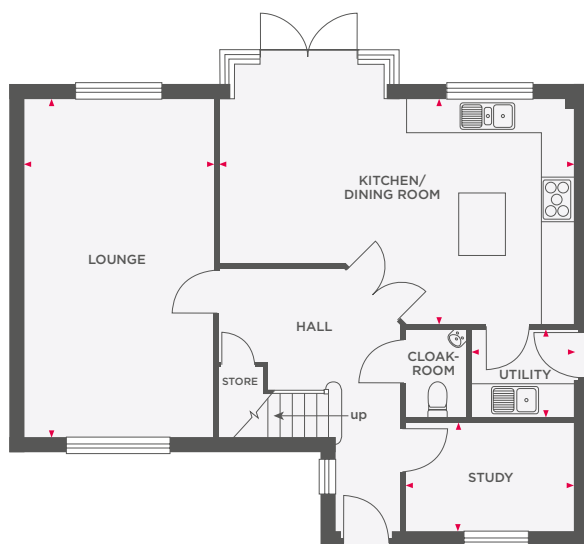






# THE OXFORD

4 BEDROOM DETACHED HOME WITH DETACHED DOUBLE GARAGE



Lounge	3400 x 6085	11'1" x 19'11"
Kitchen/Dining Room	6359 x 4088 (max)	20'10" x 13'4" (max)
Utility	1818 x 1633	5'11" x 5'4"
Study	2982 x 1986	9'9" x 6'6"

Master Bedroom	4285 x 3433	14'0" x 11'3"
Bedroom 2	3458 x 2957	11'4" x 9'8"
Bedroom 3	3038 x 3036	9'11" x 9'11"
Bedroom 4	2964 x 1957	9'8" x 6'5"



Wain Homes abides by the New Homes Quality Code, an independent industry code introduced to champion quality new homes and better consumer outcomes. Dimensions shown are internal finished dimensions which may vary as each home is built individually and the precise internal finishes may not always be the same. Please be aware that window and door positions could vary due to plot orientation. It is essential to view the working drawings with our Sales Executive for plot specific detail. Enquire for further information. Wain Homes Policy is continuous product and specification development. Every effort has been made to ensure the accuracy of the information provided in this leaflet at the date of publication but it may be subject to change without notice. Please consult with our Sales Executive to obtain the current specification. You should take appropriate steps to verify any information upon which you wish to rely. The sizes indicated are not intended to be used for carpet sizes, appliance spaces or items of furniture. Elevational treatments may vary to those shown. These particulars are intended for guidance only and their accuracy is not guaranteed. They do not constitute a contract, part of a contract or warranty. (September 2023)







# THE SHACKLEBY

3 BEDROOM HOME WITH INTEGRAL GARAGE



Lounge	4723 x 3404 (max)	15'5" x 11'2" (max)
Kitchen/ Family Room	4275 x 3404	14'0" x 11'2"

Master Bedroom	3246 x 4262 (max)	10'7" x 13'11" (max)
Bedroom 2	3943 x 3404	12'11" x 11'2"
Bedroom 3	3221 x 4224 (max)	10'6" x 13'10" (max)



Wain Homes abides by the New Homes Quality Code, an independent industry code introduced to champion quality new homes and better consumer outcomes. Dimensions shown are internal finished dimensions which may vary as each home is built individually and the precise internal finishes may not always be the same. Please be aware that window and door positions could vary due to plot orientation. It is essential to view the working drawings with our Sales Executive for plot specific detail. Enquire for further information. Wain Homes Policy is continuous product and specification development. Every effort has been made to ensure the accuracy of the information provided in this leaflet at the date of publication but it may be subject to change without notice. Please consult with our Sales Executive to obtain the current specification. You should take appropriate steps to verify any information upon which you wish to rely. The sizes indicated are not intended to be used for carpet sizes, appliance spaces or items of furniture. Elevational treatments may vary to those shown. These particulars are intended for guidance only and their accuracy is not guaranteed. They do not constitute a contract, part of a contract or warranty. (September 2023)

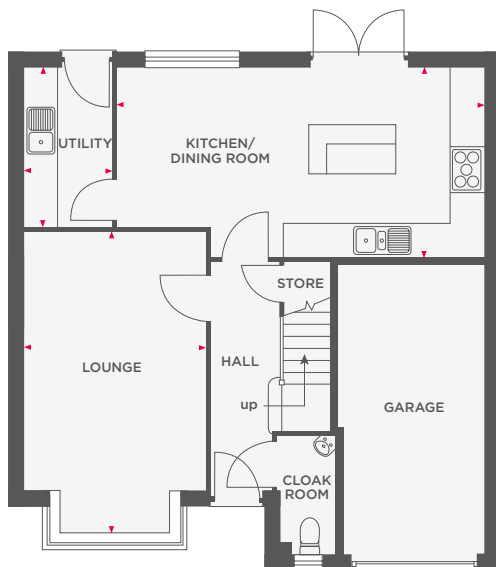




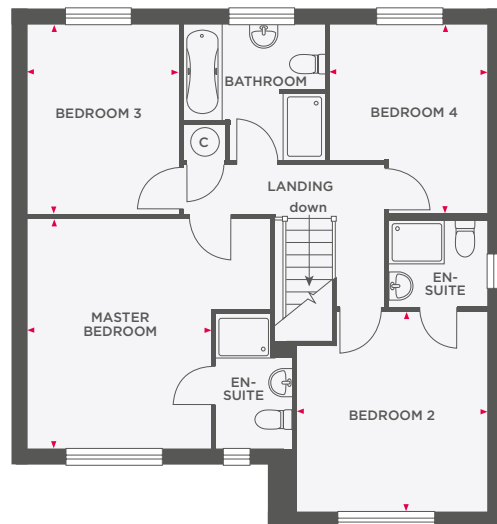


# THE SHAKESPEARE

4 BEDROOM DETACHED HOME WITH INTEGRAL GARAGE



Lounge	3321 x 5459 (max)	10'10" x 17'10" (max)
Kitchen/Dining Room	6745 x 3507 (max)	22'1" x 11'6" (max)
Utility	1714 x 2951	5'7" x 9'8"



Master Bedroom	3376 x 4136	11'0" x 13'6"
Bedroom 2	3387 x 3573	11'1" x 11'8"
Bedroom 3	2821 x 3544	9'3" x 11'7"
Bedroom 4	3001 x 3557	9'10" x 11'8"



Wain Homes abides by the New Homes Quality Code, an independent industry code introduced to champion quality new homes and better consumer outcomes. Dimensions shown are internal finished dimensions which may vary as each home is built individually and the precise internal finishes may not always be the same. Please be aware that window and door positions could vary due to plot orientation. It is essential to view the working drawings with our Sales Executive for plot specific detail. Enquire for further information. Wain Homes Policy is continuous product and specification development. Every effort has been made to ensure the accuracy of the information provided in this leaflet at the date of publication but it may be subject to change without notice. Please consult with our Sales Executive to obtain the current specification. You should take appropriate steps to verify any information upon which you wish to rely. The sizes indicated are not intended to be used for carpet sizes, appliance spaces or items of furniture. Elevational treatments may vary to those shown. These particulars are intended for guidance only and their accuracy is not guaranteed. They do not constitute a contract, part of a contract or warranty. (September 2023)

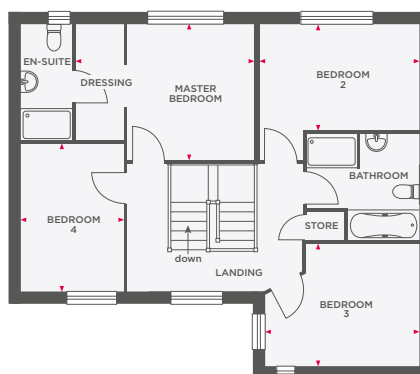
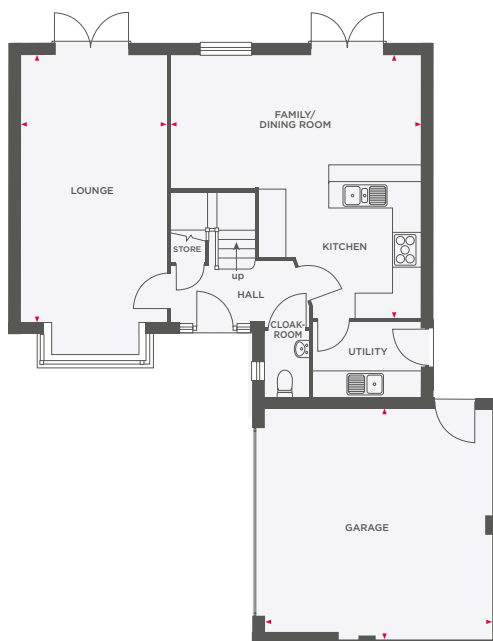
**Wain**  
HOMES





# THE STEPHENSON

4 BEDROOM DETACHED HOME WITH DOUBLE GARAGE



Lounge	3363 x 6198	11'0" x 20'4"
Kitchen/Dining Room	5835 x 6160	19'1" x 20'2"
Garage	5410 x 5410	17'8" x 17'8"

Master Bedroom	4218 x 3143	13'10" x 10'3"
Bedroom 2	3730 x 2450	12'2" x 8'0"
Bedroom 3	3610 x 2850	11'10" x 9'4"
Bedroom 4	2382 x 3412	7'9" x 11'2"



Wain Homes abides by the New Homes Quality Code, an independent industry code introduced to champion quality new homes and better consumer outcomes. Dimensions shown are internal finished dimensions which may vary as each home is built individually and the precise internal finishes may not always be the same. Please be aware that window and door positions could vary due to plot orientation. It is essential to view the working drawings with our Sales Executive for plot specific detail. Enquire for further information. Wain Homes Policy is continuous product and specification development. Every effort has been made to ensure the accuracy of the information provided in this leaflet at the date of publication but it may be subject to change without notice. Please consult with our Sales Executive to obtain the current specification. You should take appropriate steps to verify any information upon which you wish to rely. The sizes indicated are not intended to be used for carpet sizes, appliance spaces or items of furniture. Elevational treatments may vary to those shown. These particulars are intended for guidance only and their accuracy is not guaranteed. They do not constitute a contract, part of a contract or warranty. (September 2023)

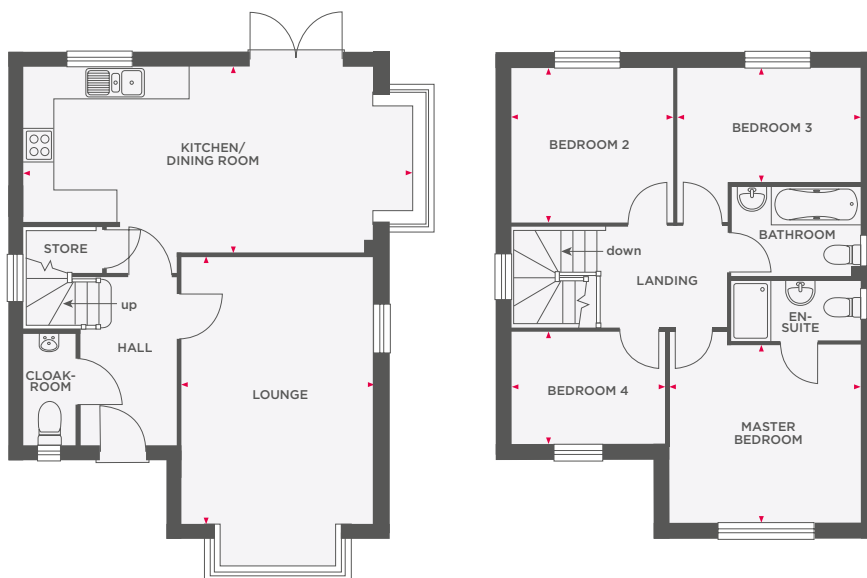






# THE WRENNICK

4 BEDROOM DETACHED HOME WITH DETACHED GARAGE



Lounge	3513 x 4844	11'6" x 15'10"
Kitchen/Dining Room	7322 x 3450 (max)	24'0" x 11'3" (max)

Master Bedroom	3602 x 3296	11'9" x 10'9"
Bedroom 2	2923 x 2836	9'7" x 9'3"
Bedroom 3	3521 x 2091	11'6" x 6'10"
Bedroom 4	2841 x 2094	9'3" x 6'10"



Wain Homes abides by the New Homes Quality Code, an independent industry code introduced to champion quality new homes and better consumer outcomes. Dimensions shown are internal finished dimensions which may vary as each home is built individually and the precise internal finishes may not always be the same. Please be aware that window and door positions could vary due to plot orientation. It is essential to view the working drawings with our Sales Executive for plot specific detail. Enquire for further information. Wain Homes Policy is continuous product and specification development. Every effort has been made to ensure the accuracy of the information provided in this leaflet at the date of publication but it may be subject to change without notice. Please consult with our Sales Executive to obtain the current specification. You should take appropriate steps to verify any information upon which you wish to rely. The sizes indicated are not intended to be used for carpet sizes, appliance spaces or items of furniture. Elevational treatments may vary to those shown. These particulars are intended for guidance only and their accuracy is not guaranteed. They do not constitute a contract, part of a contract or warranty. (April 2023)

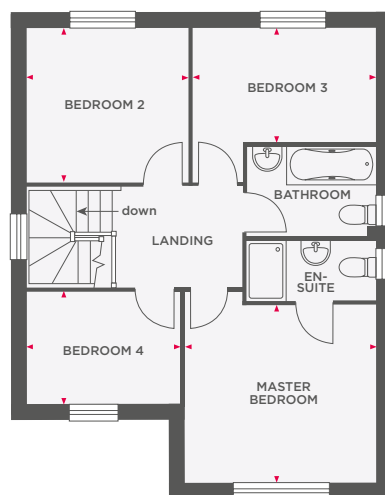
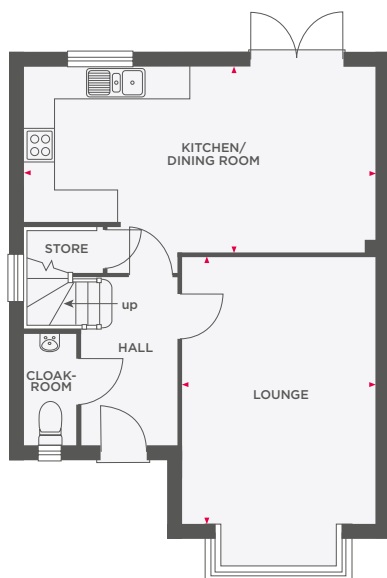






# THE WRENTON

4 BEDROOM DETACHED HOME WITH DETACHED GARAGE



Lounge	3513 x 4844	11'6" x 15'10"
Kitchen/Dining Room	6535 x 3450 (max)	21'5" x 11'3" (max)

Master Bedroom	3602 x 3296	11'9" x 10'9"
Bedroom 2	2923 x 2836	9'7" x 9'3"
Bedroom 3	3521 x 2091	11'6" x 6'10"
Bedroom 4	2841 x 2094	9'3" x 6'10"



Wain Homes abides by the New Homes Quality Code, an independent industry code introduced to champion quality new homes and better consumer outcomes. Dimensions shown are internal finished dimensions which may vary as each home is built individually and the precise internal finishes may not always be the same. Please be aware that window and door positions could vary due to plot orientation. It is essential to view the working drawings with our Sales Executive for plot specific detail. Enquire for further information. Wain Homes Policy is continuous product and specification development. Every effort has been made to ensure the accuracy of the information provided in this leaflet at the date of publication but it may be subject to change without notice. Please consult with our Sales Executive to obtain the current specification. You should take appropriate steps to verify any information upon which you wish to rely. The sizes indicated are not intended to be used for carpet sizes, appliance spaces or items of furniture. Elevational treatments may vary to those shown. These particulars are intended for guidance only and their accuracy is not guaranteed. They do not constitute a contract, part of a contract or warranty. (September 2023)







# THE TREVITHICK

3 BEDROOM HOME WITH PARKING



Lounge	3800 x 4605 (max)	12'5" x 15'1" (max)
Kitchen/Dining Room	4845 x 2965	15'10" x 9'8"

Master Bedroom	3910 x 3100 (max)	12'10" x 10'2" (max)
Bedroom 2	2795 x 2430	9'2" x 7'10"
Bedroom 3	1951 x 2820	6'4" x 9'3"



Wain Homes abides by the **New Homes Quality Code**, an independent industry code introduced to champion quality new homes and better consumer outcomes. Dimensions shown are internal finished dimensions which may vary as each home is built individually and the precise internal finishes may not always be the same. Please be aware that window and door positions could vary due to plot orientation. It is essential to view the working drawings with our Sales Executive for plot specific detail. Enquire for further information. Wain Homes Policy is continuous product and specification development. Every effort has been made to ensure the accuracy of the information provided in this leaflet at the date of publication but it may be subject to change without notice. Please consult with our Sales Executive to obtain the current specification. You should take appropriate steps to verify any information upon which you wish to rely. The sizes indicated are not intended to be used for carpet sizes, appliance spaces or items of furniture. Elevational treatments may vary to those shown. These particulars are intended for guidance only and their accuracy is not guaranteed. They do not constitute a contract, part of a contract or warranty. (September 2023)

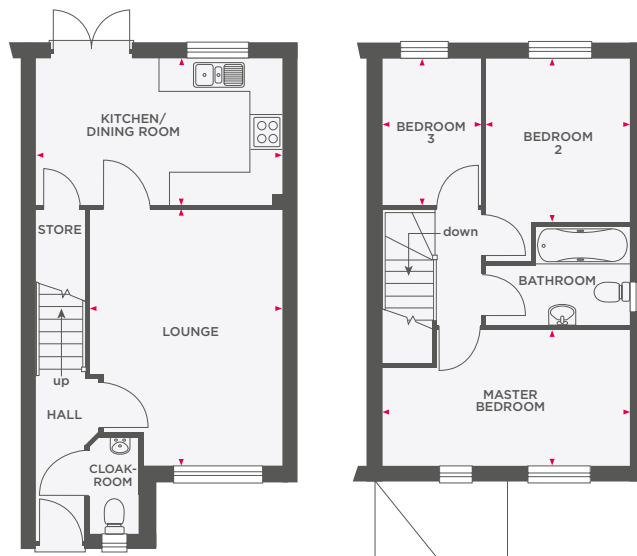
**Wain**  
HOMES





# THE BAIRD

## 3 BEDROOM HOME WITH PARKING



Lounge	3582 x 4648 (max)	11'9" x 15'2" (max)
Kitchen/Dining Room	2695 x 4554	8'10" x 14'11"

Master Bedroom	2444 x 4554 (max)	8'0" x 14'11" (max)
Bedroom 2	2596 x 3009	8'6" x 9'10"
Bedroom 3	1866 x 2695	6'1" x 8'10"



Wain Homes abides by the New Homes Quality Code, an independent industry code introduced to champion quality new homes and better consumer outcomes. Dimensions shown are internal finished dimensions which may vary as each home is built individually and the precise internal finishes may not always be the same. Please be aware that window and door positions could vary due to plot orientation. It is essential to view the working drawings with our Sales Executive for plot specific detail. Enquire for further information. Wain Homes Policy is continuous product and specification development. Every effort has been made to ensure the accuracy of the information provided in this leaflet at the date of publication but it may be subject to change without notice. Please consult with our Sales Executive to obtain the current specification. You should take appropriate steps to verify any information upon which you wish to rely. The sizes indicated are not intended to be used for carpet sizes, appliance spaces or items of furniture. Elevational treatments may vary to those shown. These particulars are intended for guidance only and their accuracy is not guaranteed. They do not constitute a contract, part of a contract or warranty. (September 2023)

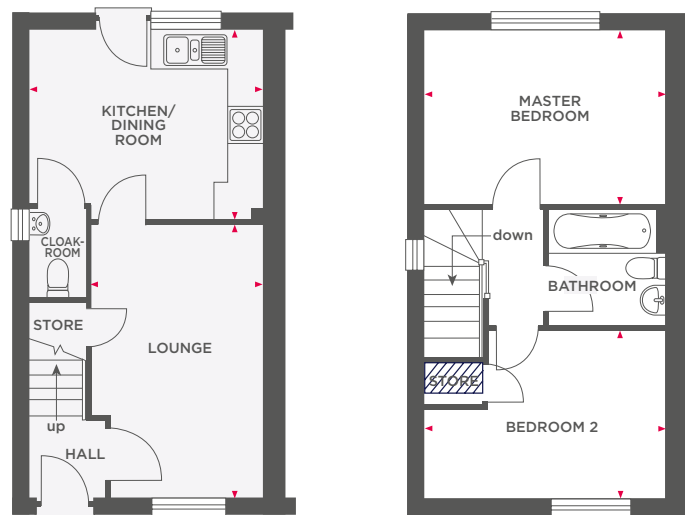






# THE BELL

## 2 BEDROOM HOME WITH PARKING



Limited Use Area

Reduced head height below 1.5m

Lounge	2820 x 4298 (max)	9'3" x 14'1" (max)
Kitchen/Dining Room	3848 x 3046	12'7" x 9'11"

Master Bedroom	3848 x 2696 (max)	12'7" x 8'10" (max)
Bedroom 2	3848 x 2685 (max)	12'7" x 8'9" (max)



Wain Homes abides by the New Homes Quality Code, an independent industry code introduced to champion quality new homes and better consumer outcomes. Dimensions shown are internal finished dimensions which may vary as each home is built individually and the precise internal finishes may not always be the same. Please be aware that window and door positions could vary due to plot orientation. It is essential to view the working drawings with our Sales Executive for plot specific detail. Enquire for further information. Wain Homes Policy is continuous product and specification development. Every effort has been made to ensure the accuracy of the information provided in this leaflet at the date of publication but it may be subject to change without notice. Please consult with our Sales Executive to obtain the current specification. You should take appropriate steps to verify any information upon which you wish to rely. The sizes indicated are not intended to be used for carpet sizes, appliance spaces or items of furniture. Elevational treatments may vary to those shown. These particulars are intended for guidance only and their accuracy is not guaranteed. They do not constitute a contract, part of a contract or warranty. (September 2023)

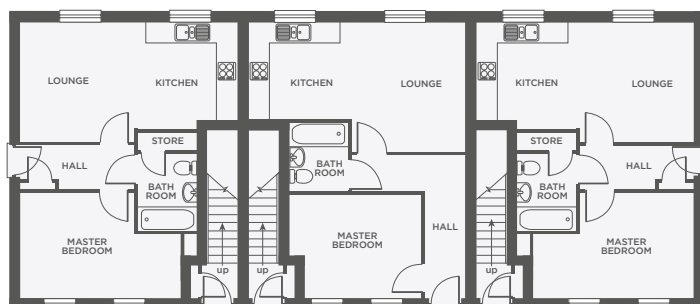
**Wain**  
HOMES





# THE CHINLEY APARTMENTS

## 1 BEDROOM APARTMENTS



Type A

Type B

Type A

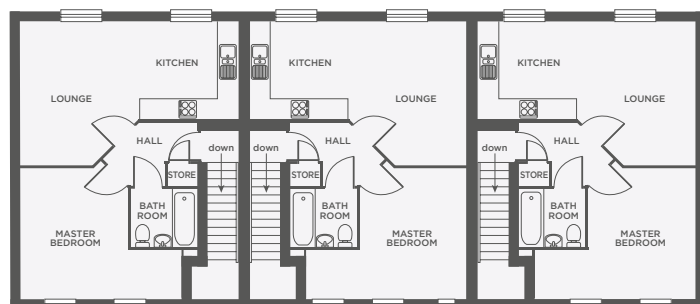
### GROUND FLOOR

#### Type A

Lounge/Kitchen	6300 x 3496 (max)	20'8" x 11'5" (max)
Master Bedroom	4639 x 3050 (max)	15'2" x 10'3" (max)

#### Type B

Lounge/Kitchen	6300 x 3781 (max)	20'8" x 12'4" (max)
Master Bedroom	3815 x 3000 (max)	12'6" x 9'10" (max)



Type C

Type C

Type C

### FIRST FLOOR

#### Type B

Lounge/Kitchen	6300 x 4156 (max)	20'8" x 13'7" (max)
Master Bedroom	4639 x 3764 (max)	15'2" x 12'4" (max)



Wain Homes abides by the New Homes Quality Code, an independent industry code introduced to champion quality new homes and better consumer outcomes. Dimensions shown are internal finished dimensions which may vary as each home is built individually and the precise internal finishes may not always be the same. Please be aware that window and door positions could vary due to plot orientation. It is essential to view the working drawings with our Sales Executive for plot specific detail. Enquire for further information. Wain Homes Policy is continuous product and specification development. Every effort has been made to ensure the accuracy of the information provided in this leaflet at the date of publication but it may be subject to change without notice. Please consult with our Sales Executive to obtain the current specification. You should take appropriate steps to verify any information upon which you wish to rely. The sizes indicated are not intended to be used for carpet sizes, appliance spaces or items of furniture. Elevational treatments may vary to those shown. These particulars are intended for guidance only and their accuracy is not guaranteed. They do not constitute a contract, part of a contract or warranty. (June 2024)

