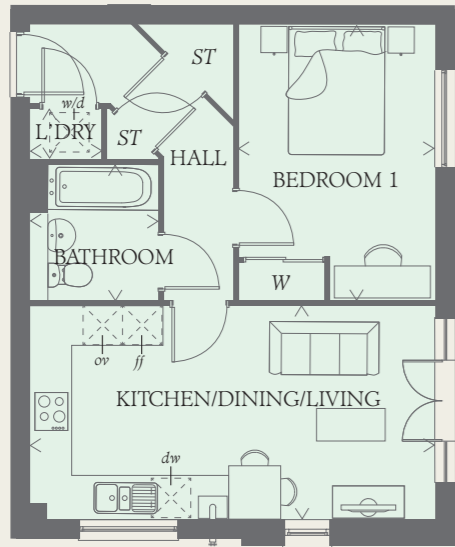




# The Limes at Frenchay

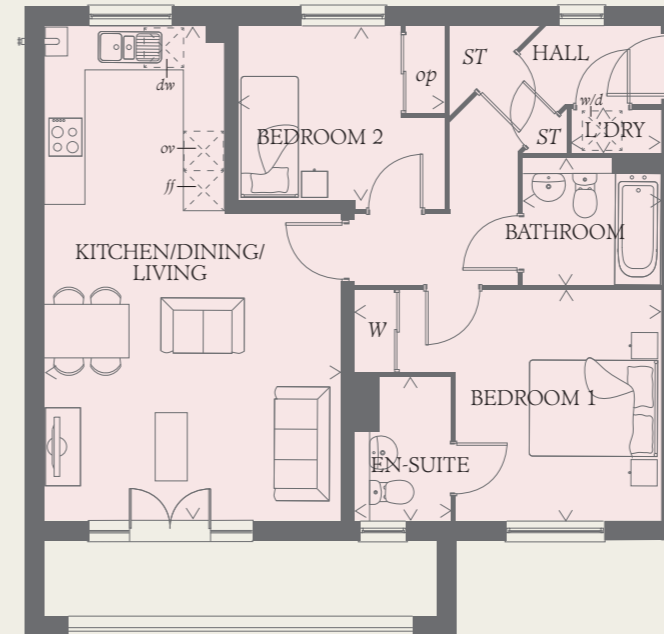
*Apartment Block C*





**TYPE 1** PLOTS 4051, 4054 & 4057

KITCHEN/ DINING/ LIVING	20'3" x 10'9"	6.18 x 3.27 m
BEDROOM 1	13'10" x 9'10"	4.23 x 3.00 m
BATHROOM	6'11" x 6'5"	2.10 x 1.95 m
LAUNDRY	3'6" x 2'7"	1.08 x 0.78 m

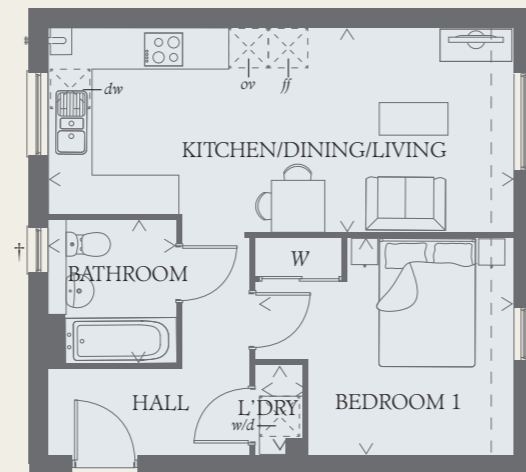


**TYPE 5** PLOTS 4055 & 4058

KITCHEN/ DINING/ LIVING	24'10" x 14'10"	7.57 x 4.52 m
BEDROOM 1	11'7" x 10'3"	3.53 x 3.14 m
BEDROOM 2	10'4" x 9'2"	3.16 x 2.79 m
BATHROOM	6'11" x 6'5"	2.10 x 1.95 m
LAUNDRY	4'6" x 2'3"	1.38 x 0.68 m

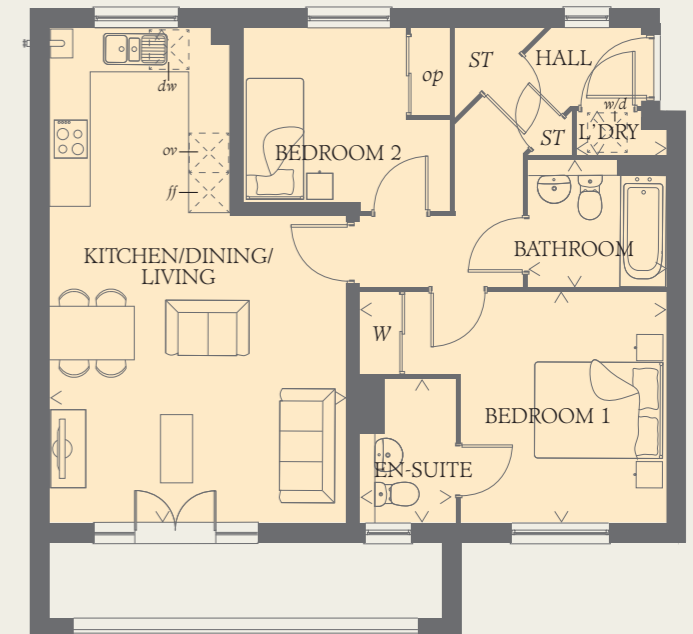
**TYPE 4** PLOTS 4050, 4053 & 4056

KITCHEN/ DINING/ LIVING	23'4" x 9'10"	7.12 x 3.12 m
BEDROOM 1	13'0" x 10'11"	3.97 x 3.32 m
BATHROOM	7'3" x 6'5"	2.21 x 1.95 m
LAUNDRY	4'6" x 2'6"	1.37 x 0.75 m



**TYPE 5a** PLOT 4052

KITCHEN/ DINING/ LIVING	24'10" x 14'10"	7.57 x 4.52 m
BEDROOM 1	11'7" x 10'3"	3.53 x 3.14 m
BEDROOM 2	10'4" x 9'2"	3.16 x 2.79 m
BATHROOM	6'11" x 6'5"	2.10 x 1.95 m
LAUNDRY	4'6" x 2'3"	1.38 x 0.68 m

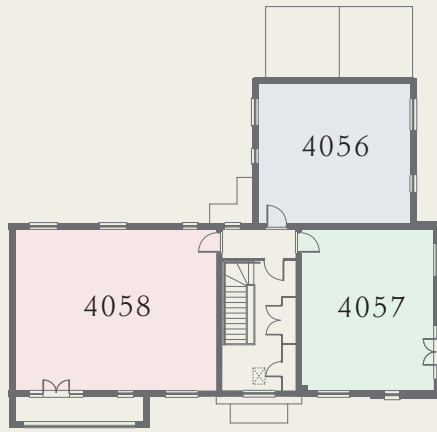


Customers should note this illustration is an example of the Limes at Frenchay apartment types. All dimensions indicated are approximate and the furniture layout is for illustrative purposes only. Homes may be 'handed' (mirror image) versions of the illustrations, please refer to individual plots working drawings for correct handing. Materials used may differ from plot to plot including render and roof tile colours. Detailed plans and specifications are available for inspection for each plot at our Sales Centre during working hours and customers must check their individual specifications prior to making a reservation. THINK 210475.  
 † No window on Ground Floor (Plot 4050) - - - - Second Floor, Plot 4056 has reduced ceiling height

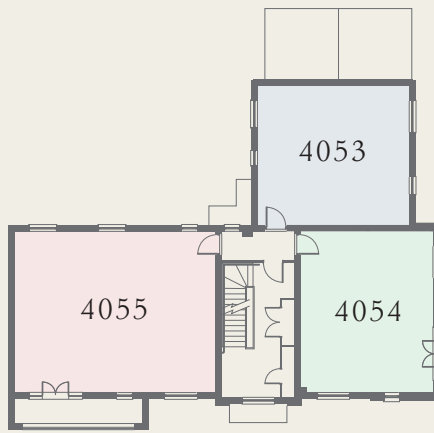
**KEY**

Hob	Dishwasher space
Oven	Cupboard
Fridge/freezer	Wardrobe
Washer/dryer space	Optional wardrobe

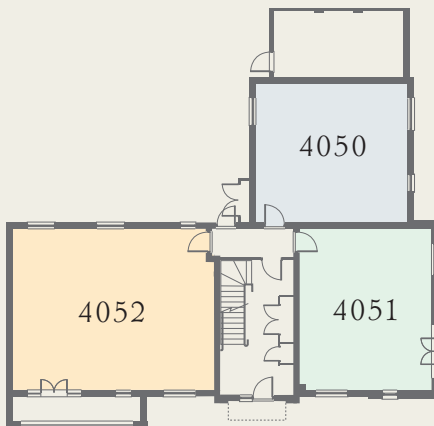




SECOND FLOOR



FIRST FLOOR



GROUND FLOOR

**CONSUMER  
CODE FOR  
HOME BUILDERS**

[www.consumercode.co.uk](http://www.consumercode.co.uk)