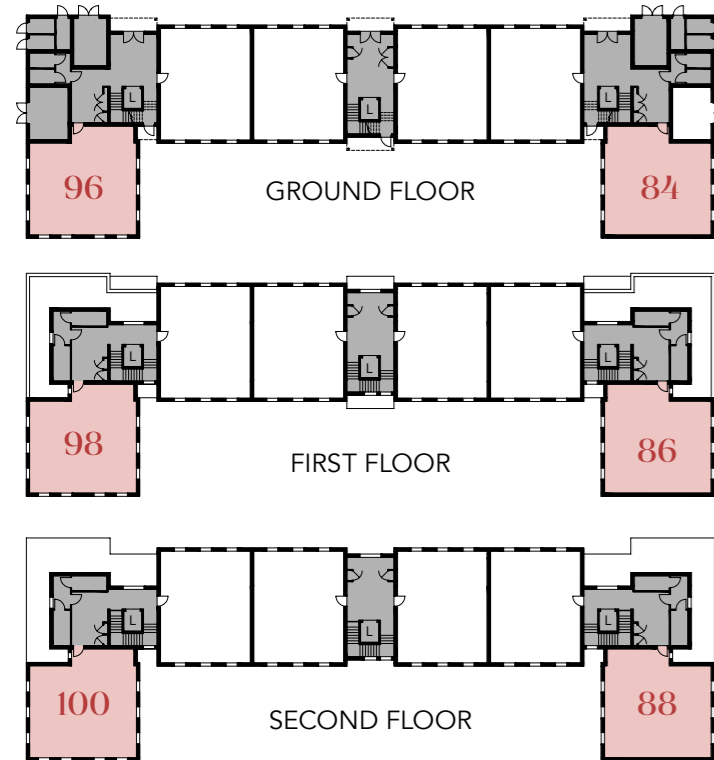


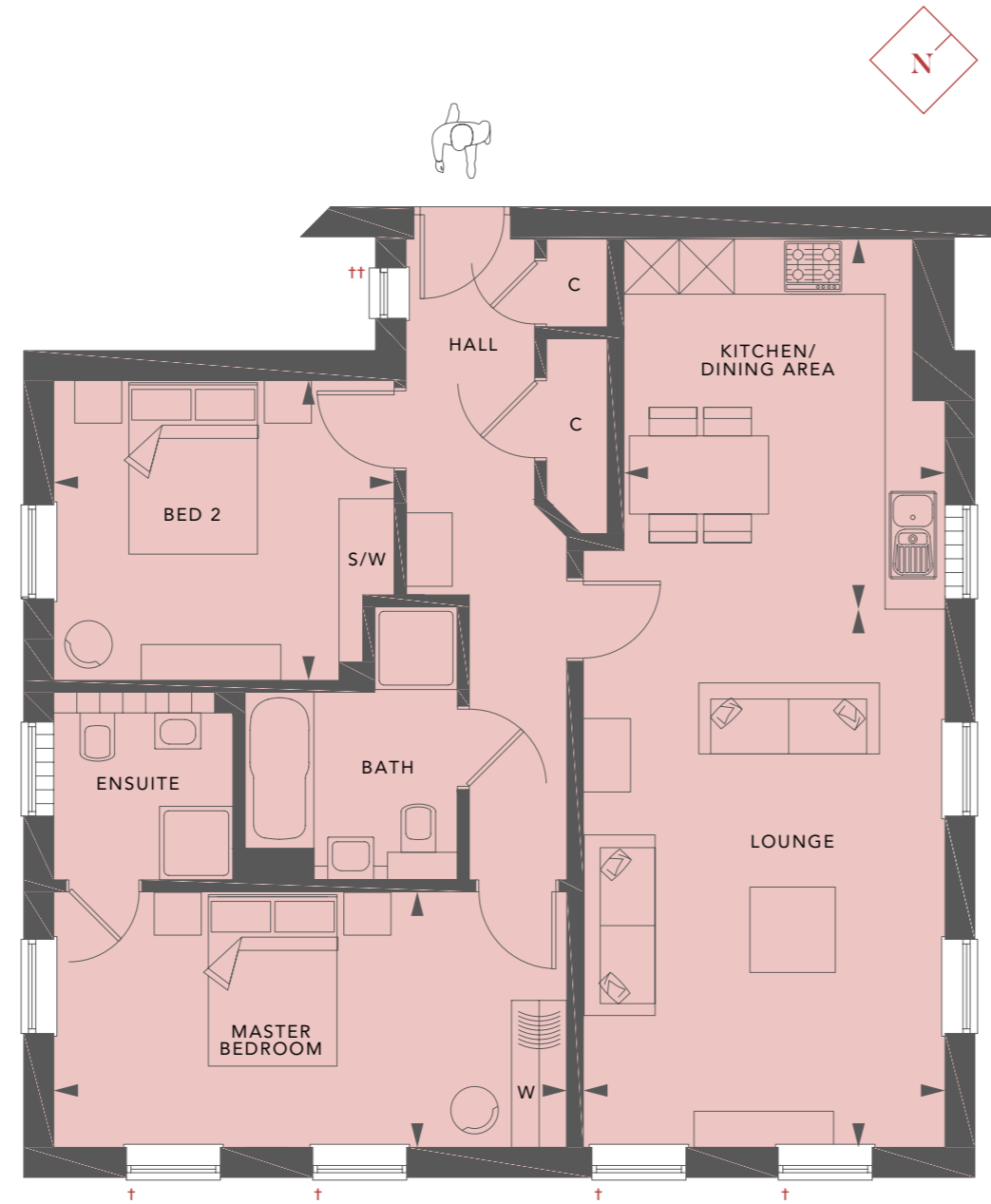
THE ASH

Plots 84*, 86*, 88*, 96, 98 & 100

LOUNGE	3.93m x 5.86m / 12'9" x 19'2"
KITCHEN/DINING AREA	3.49m x 4.02m / 11'4" x 13'2"
MASTER BEDROOM	5.21m x 2.79m / 17'1" x 9'1"
BEDROOM 2	3.44m x 3.27m / 11'3" x 10'7"
TOTAL	89.48 sq m / 963 sq ft



◆ Entrance and lift cores
L Lift



*Plots 84, 86 and 88 are handed.

† Windows to plots 96, 98 and 100 only. †† Window to plots 86, 88, 98 and 100 only. Details may vary from plot to plot. Dimensions are approximate and should not be used for furniture space, appliance space or carpet sizes. Please ask for details of your chosen plot. The contents of this document do not form or constitute a warranty or represent part of any contract. Please note: to increase legibility these plans have been sized to fit the page. As a result each plan may be a different scale to others within this document. S/W – Space for wardrobe. W – Wardrobe (only provided to Master Bedroom). C – Cupboard.

Interiors are spacious and filled with light. The large kitchen, dining and living areas combine comfort and convenience - and offer simple practical answers for informal modern living.

