

# THE GLENCARSE

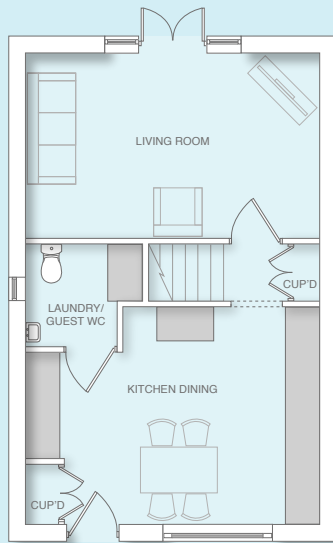


## 3 Bedroom Terrace House

The Glencarse is a 3 bedroom home to suit both couples and young families and is perfect for first time buyers stepping on to the housing ladder.

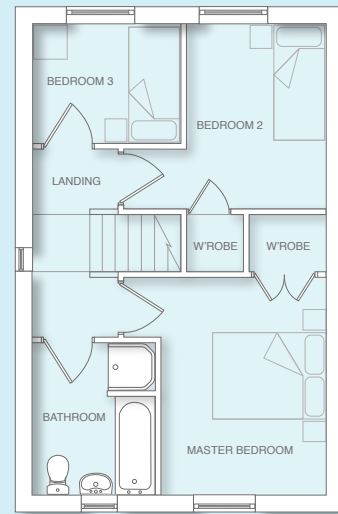
You enter into the kitchen with its handy breakfast bar. Through an archway you head to the well proportioned living room with french doors opening out to the rear garden. The useful laundry & guest cloakroom and a cupboard to the hallway complete the ground floor.

Upstairs the landing leads to the master bedroom with a built in wardrobe. A further bedroom with built in cupboard, the family bathroom with separate shower and a bedroom which could alternatively be used as a study or nursery are also on the first floor.



### Ground Floor

Living Room	5150 x 3250 mm
	16'10" x 10'7"
Kitchen & Dining	5150 x 3815 mm max
	16'10" x 12'6"
Laundry & Guest Cloakroom	2050 x 1800 mm max
	6'8" x 5'10"



### First Floor

Master Bedroom	2900 min x 3815 mm max (exc. wardrobe)
	9'6" x 12'6"
Bedroom 2	2450 min x 3250 mm
	8'0" x 10'7" (exc. wardrobe)
Bedroom 3	2600 x 2100 mm
	8'6" x 6'10"
Bathroom	2150 x 2665 mm
	7'0" x 8'8"



[www.broadgatehomes.com](http://www.broadgatehomes.com)

This image is from an imaginary viewpoint within an open space area. Its purpose is to give a feel for the development, not an accurate description of an individual property. It shows a typical Broadgate home of this type, but external materials and landscaping may vary throughout the development and from site to site. Certain windows are subject to plot position on site. Properties may also be built handed (mirror image).

The floor plans depict a typical layout of this housetype. All dimensions are + or - 50mm and floor plans are not shown to scale. For exact plot specification, details of external and internal finishes, dimensions and floor plan differences always consult your Sales Negotiator. HP16/916/6b