

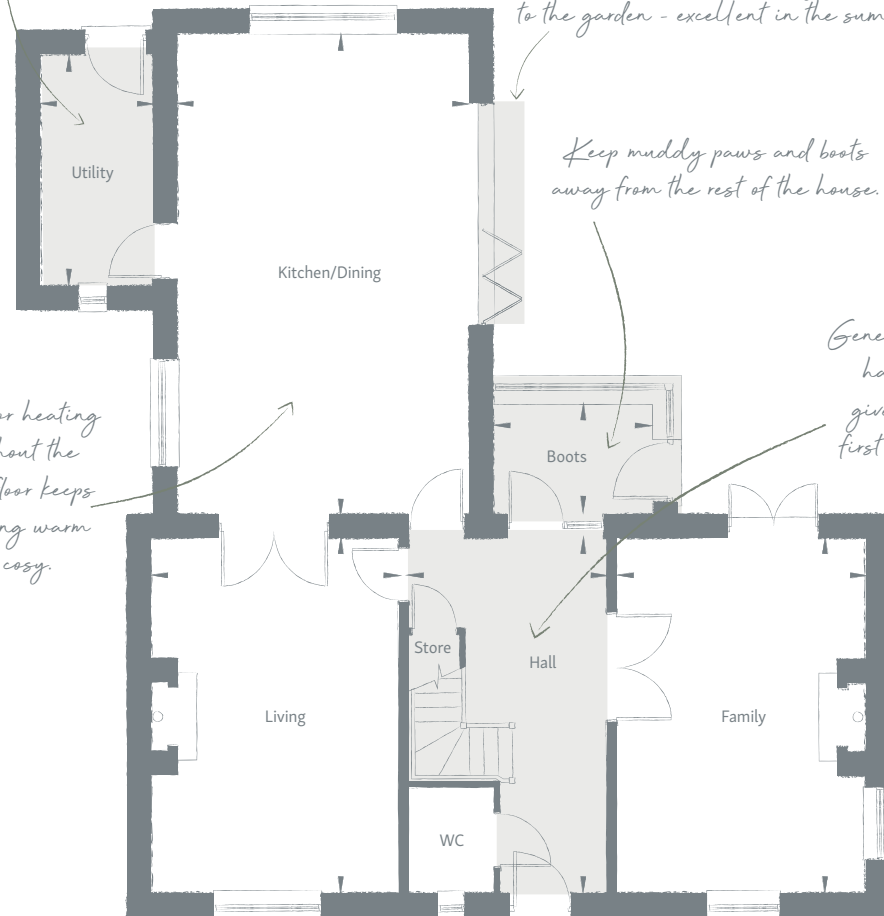
A useful area for laundry or even pet supplies, with a Velux window for lots of natural light.

Modern bi-fold doors to bring you closer to the garden - excellent in the summer!

Keep muddy paws and boots away from the rest of the house.

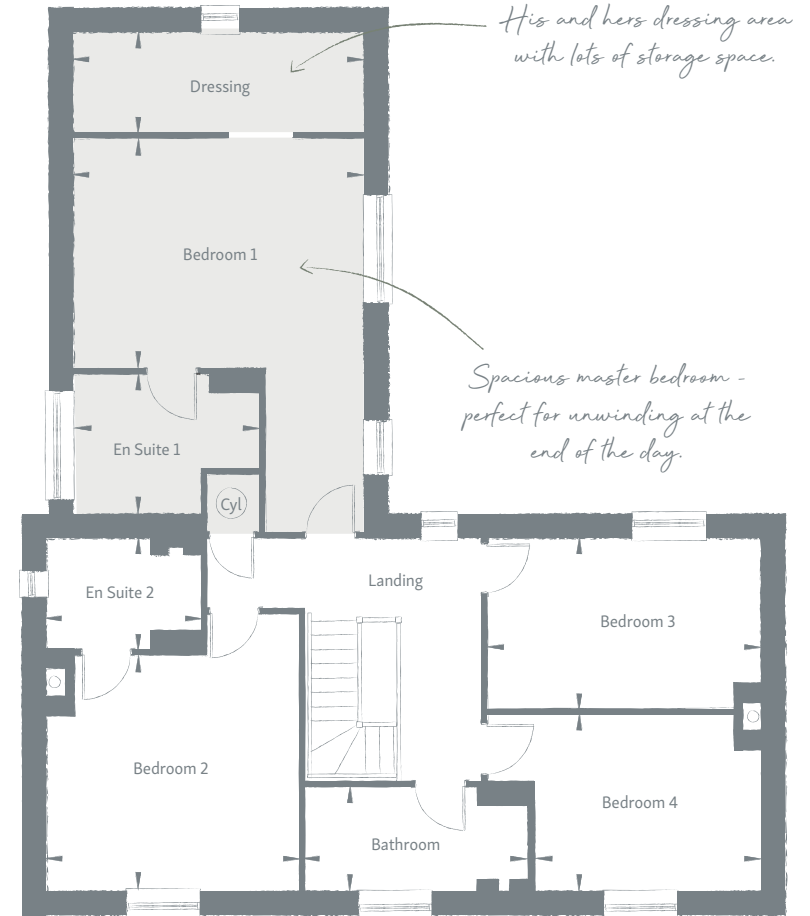
Generously-sized hallway to give the right first impression.

Underfloor heating throughout the ground floor keeps everything warm and cosy.



Ground floor

Living	5.68m x 3.97m / 18' 8" x 13' 1"
Kitchen/Dining	7.68m x 4.66m / 25' 3" x 15' 4"
Utility	3.72m x 1.79m / 12' 3" x 5' 11"
Boots	1.80m x 2.58m / 5' 11" x 8' 6"
Family	5.68m x 3.97m / 18' 8" x 13' 1"



His and hers dressing area with lots of storage space.

Spacious master bedroom - perfect for unwinding at the end of the day.

First floor

Master Bedroom	3.68m x 4.68m / 12' 1" x 15' 4"	Bedroom 3	2.74m x 4.40m / 9' 0" x 14' 5"
Dressing	1.61m x 4.68m / 5' 4" x 15' 4"	Bedroom 4	2.85m x 3.63m / 9' 4" x 11' 11"
En Suite 1	2.21m x 2.98m / 7' 3" x 9' 9"	Bathroom	1.68m x 3.56m / 5' 6" x 11' 9"
Bedroom 2	3.80m x 4.03m / 12' 6" x 13' 3"		
En Suite 2	1.78m x 2.47m / 5' 10" x 8' 1"		

Total Area = 220.19 m² 2370 sq ft