



# The Harrogate

*Four Bedroom Home*

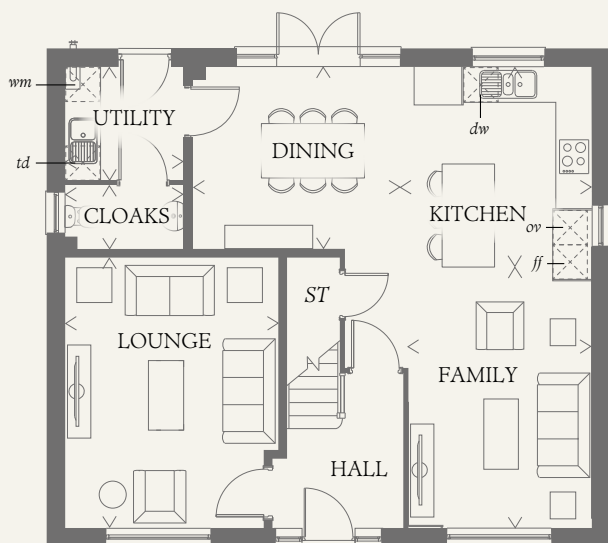




# The Harrogate

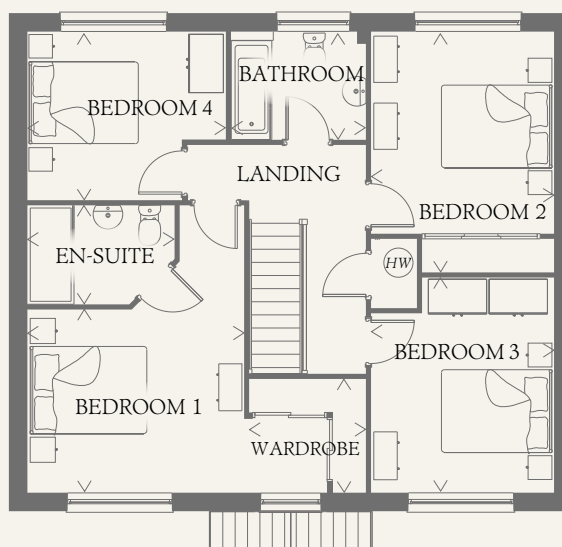
## Four Bedroom Home

The unique design of the doorway tells you just how much effort has gone into the creation of the Harrogate by craftsmen who care. It's touches like these that make your house into a home, transforming the ordinary into the extraordinary.



### GROUND FLOOR

|         |               |               |
|---------|---------------|---------------|
| LOUNGE  | 15'2" x 12'0" | 4.63 x 3.65 m |
| KITCHEN | 12'0" x 9'11" | 3.67 x 3.03 m |
| DINING  | 12'5" x 10'3" | 3.80 x 3.13 m |
| FAMILY  | 13'9" x 10'3" | 4.24 x 3.14 m |
| CLOAKS  | 6'7" x 3'6"   | 2.04 x 1.09 m |
| UTILITY | 6'7" x 6'4"   | 2.04 x 1.95 m |



### FIRST FLOOR

|           |               |               |
|-----------|---------------|---------------|
| BEDROOM 1 | 12'2" x 10'4" | 3.71 x 3.15 m |
| WARDROBE  | 6'4" x 6'5"   | 1.95 x 1.99 m |
| EN-SUITE  | 8'4" x 5'7"   | 2.53 x 1.69 m |
| BEDROOM 2 | 13'5" x 10'2" | 4.13 x 3.11 m |
| BEDROOM 3 | 12'1" x 10'2" | 3.69 x 3.11 m |
| BEDROOM 4 | 10'4" x 9'6"  | 3.40 x 2.89 m |
| BATHROOM  | 7'6" x 6'1"   | 2.31 x 1.86 m |

This floorplan relates to plots 39, 48, 51 & 53. For plot 33 please speak with Sales Consultant for relevant details.

#### CONSUMER CODE FOR HOME BUILDERS

[www.consumercode.co.uk](http://www.consumercode.co.uk)

Customers should note this illustration is an example of the Amberley house type. All dimensions indicated are approximate and the furniture layout is for illustrative purposes only. Homes may be 'handed' (mirror image) versions of the illustrations, and may be detached, semi-detached or terraced. Materials used may differ from plot to plot including render and roof tile colours. Detailed plans and specifications are available for inspection for each plot at our Sales Centre during working hours and customers must check their individual specifications prior to making a reservation.

#### KEY

|                                 |                              |
|---------------------------------|------------------------------|
| Hob                             | <i>td</i> Tumble dryer space |
| <i>ov</i> Oven                  | Hot water cylinder           |
| <i>ff</i> Fridge/freezer        | <i>ST</i> Cupboard           |
| <i>wm</i> Washing machine space |                              |
| <i>dw</i> Dishwasher space      |                              |

Redrow.co.uk give notice that the property particulars and related information on this site, whilst believed to be accurate, are set as a general outline for guidance only. Intending purchasers should not rely on them as statements or representations of fact, but must satisfy themselves before physical inspection as to their availability, or by physical inspection of the property in question or otherwise as to their accuracy or fit for purpose. Consequently, no information displayed on this site (or linked sites) constitutes or forms part of a contract. Materials used may differ from plot to plot including render and roof tile colours.

> Max dimensions Note: Bedroom dimensions taken into wardrobe recess. All wardrobes are subject to site specification. Please see Sales Consultant for further details.

1235410 July 2020