



Oxford

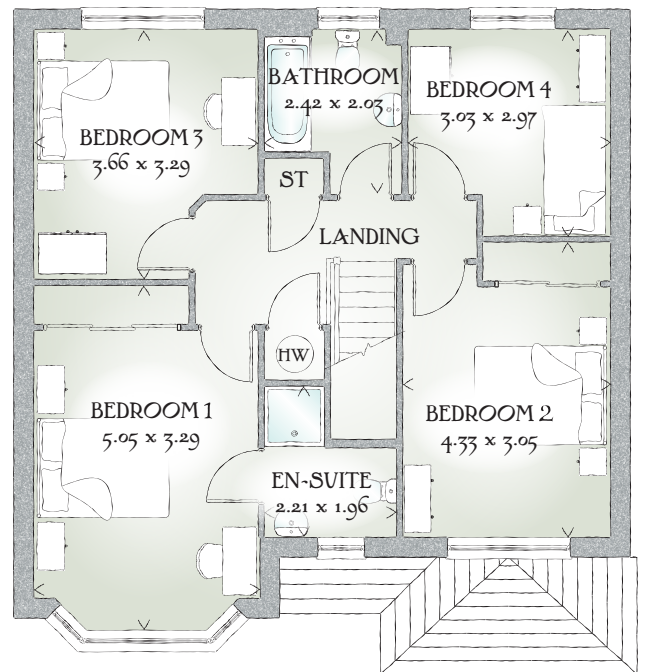
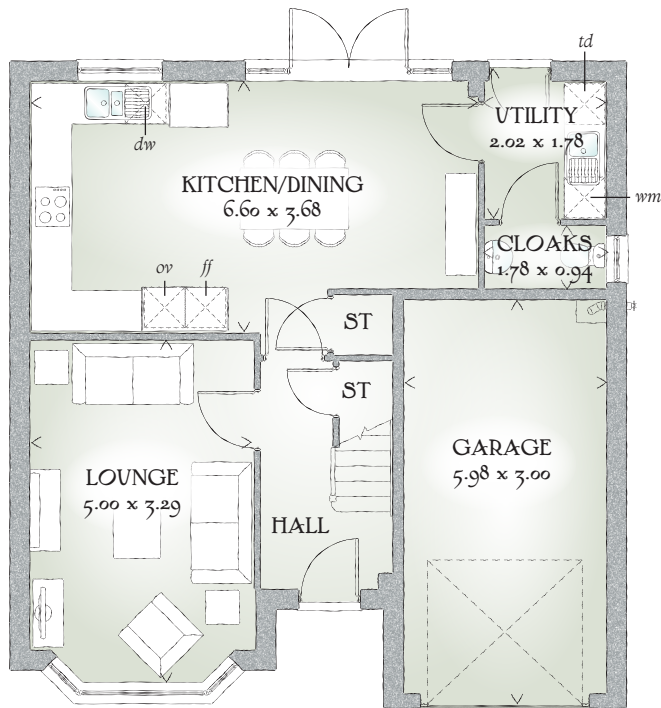
FOUR BEDROOM HOME



 REDROW



Oxford



FOUR BEDROOM HOME

This is an excellent home of quality and character, built with pride to offer a solid foundation for family life. The Oxford's design captures the essence of traditional house building, including bay windows and roofed porch.

GROUND FLOOR

Lounge	16'5" x 10'10"	5.00 x 3.29 m
Kitchen/ Dining	21'8" x 12'1"	6.60 x 3.68 m
Cloaks	5'10" x 3'1"	1.78 x 0.94 m
Utility	6'8" x 5'10"	2.02 x 1.78 m
Garage	19'7" x 9'10"	5.98 x 3.00 m

FIRST FLOOR

Bedroom 1	16'7" x 10'10"	5.05 x 3.29 m
En-suite	7'3" x 6'5"	2.21 x 1.96 m
Bedroom 2	14'2" x 10'0"	4.33 x 3.05 m
Bedroom 3	12'0" x 10'10"	3.66 x 3.29 m
Bedroom 4	9'11" x 9'9"	3.03 x 2.97 m
Bathroom	7'11" x 6'8"	2.42 x 2.03 m

CONSUMER CODE FOR HOME BUILDERS

www.consumercode.co.uk

Customers should note this illustration is an example of the Oxford house type. All dimensions indicated are approximate and the furniture layout is for illustrative purposes only. Homes may be 'handed' (mirror image) versions of the illustrations, and may be detached, semi-detached or terraced. Materials used may differ from plot to plot including render and roof tile colours. Detailed plans and specifications are available for inspection for each plot at our Sales Centre during working hours and customers must check their individual specifications prior to making a reservation.

KEY Hob Oven Fridge/freezer Washing machine space Dishwasher Tumble dryer Hot water cylinder ST Cupboard

< Denotes where dimensions are taken from. All wardrobes are subject to site specification. Please see Sales Consultant for further details.

Traditional homes, built the way you remember

