

THE PITLOCHRY

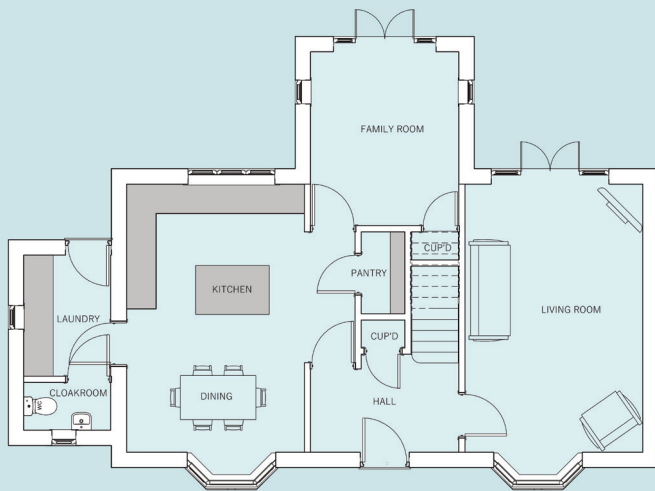


4 Bedroom Detached House

The Pitlochry four bedroom home offers versatile living space that will appeal to both families and couples in need of a bigger home.

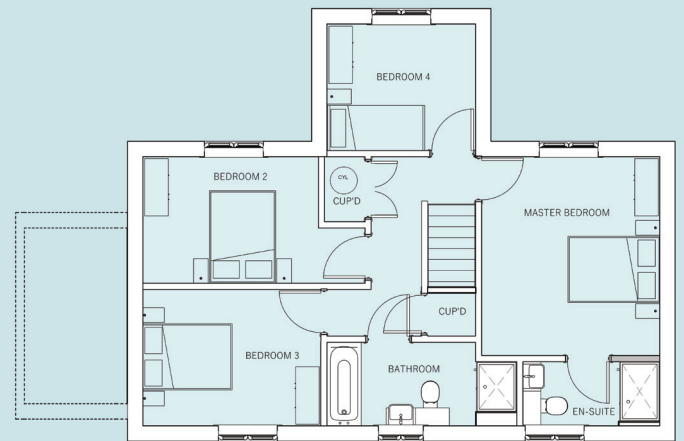
The entrance hallway leads on one side to the dual aspect living room making a great place to relax. To the other side of the hall is the generous sized kitchen dining area with a walk-in pantry. Off the kitchen is the laundry room and guest cloakroom with the family room having French doors leading into the rear garden.

The well-proportioned, master bedroom with en-suite, along with three further bedrooms and the family bathroom with separate shower cubicle complete the accommodation on the first floor.



Ground Floor

Kitchen Dining	4719	x	5500 mm max
	15' 6"	x	18' 0"
Living Room	3625	x	5500 mm
	11' 9"	x	18' 0"
Pantry	918	x	1700 mm
	3' 0"	x	5' 6"
Family Room	3050	x	3575 mm
	10' 0"	x	11' 7"
Laundry Room	1800	x	2500 mm
	5' 11"	x	8' 2"
Guest Cloakroom	1800	x	1000 mm
	5' 11"	x	3' 3"



First Floor

Master Bedroom	3625	x	4070 mm
	11' 11"	x	13' 4"
En-suite	2785	x	1230 mm
	9' 2"	x	3' 11"
Bedroom 2	4525	x	2600 mm max
	14' 10"	x	8' 6"
Bedroom 3	3563	x	2800 mm
	11' 8"	x	9' 2"
Bedroom 4	3050	x	2600 mm
	10' 0"	x	8' 6"
Bathroom	3952	x	1725 mm max
	12' 11"	x	5' 7"



www.broadgatehomes.com

This image is from an imaginary viewpoint within an open space area. Its purpose is to give a feel for the development, not an accurate description of an individual property. It shows a typical Broadgate home of this type, but external materials and landscaping may vary throughout the development and from site to site. Certain windows are subject to plot position on site. Properties may also be built handed (mirror image).

The floor plans depict a typical layout of this housetype. All dimensions are + or - 50mm and floor plans are not shown to scale. For exact plot specification, details of external and internal finishes, dimensions and floor plan differences always consult your Sales Negotiator. WS24/1508/PI

