

THE BURGHLEY

PLOT 10



- 4 Spacious Double Bedrooms
- Large Open Plan Kitchen / Dining
- Large Separate Living Room
- Separate Utility

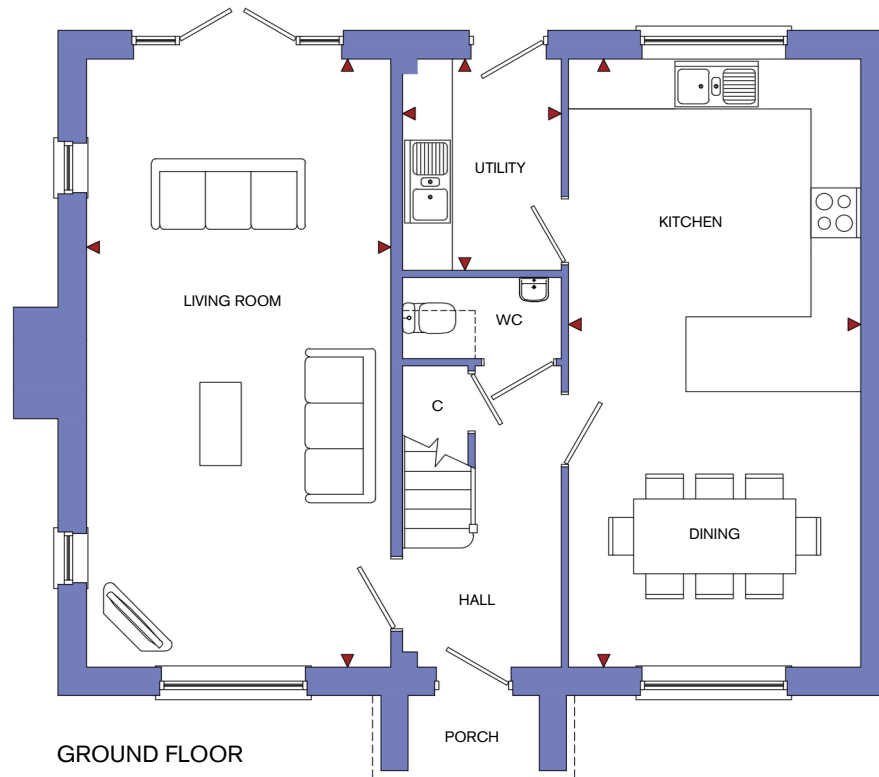
- Family Bathroom & Downstairs W/C
- En-suite to Bedroom 1
- Built-in Wardrobes to all Bedrooms
- Double Garage & Off-Road Parking
- Energy Efficient Materials Throughout



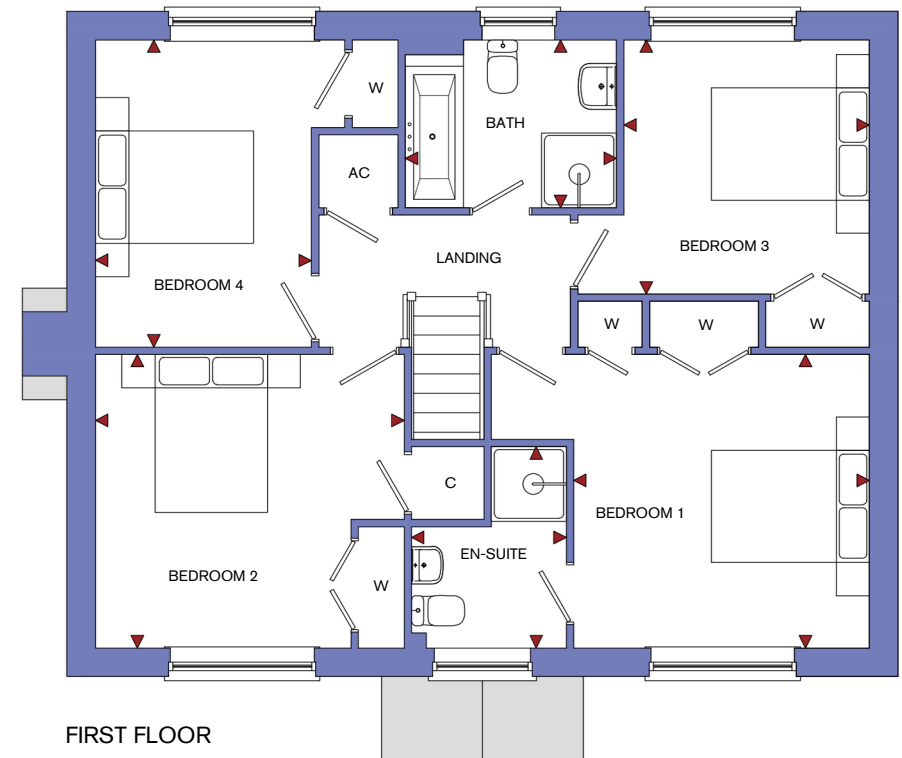
THE BURGHLEY

FLOOR PLANS

ROOM	IMPERIAL / "	METRIC / mm
Living Room	12' 0" x 24' 0"	3660 x 7310mm
Kitchen / Dining	11' 6" x 24' 0"	3512 x 7310mm
Utility	6' 3" x 8' 4"	1910 x 2540mm



ROOM	IMPERIAL / "	METRIC / mm
Bedroom 1	11' 8" x 11' 7"	3559 x 3528mm
Bedroom 2	12' 2" x 11' 7"	3712 x 3528mm
Bedroom 3	9' 8" x 10' 0"	2955 x 3056mm
Bedroom 4	8' 6" x 12' 2"	2599 x 3694mm
Bathroom	8' 4" x 6' 8"	2542 x 2017mm
En-Suite	6' 1" x 7' 11"	1863 x 2421mm



TOTAL FLOOR AREA
1465ft² / 136.1m²