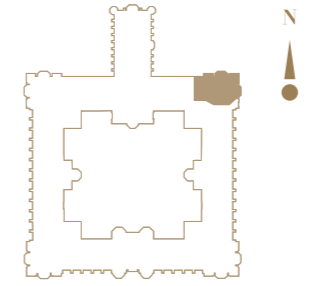


SIGNATURE
COLLECTION

THE
PLAYFAIR

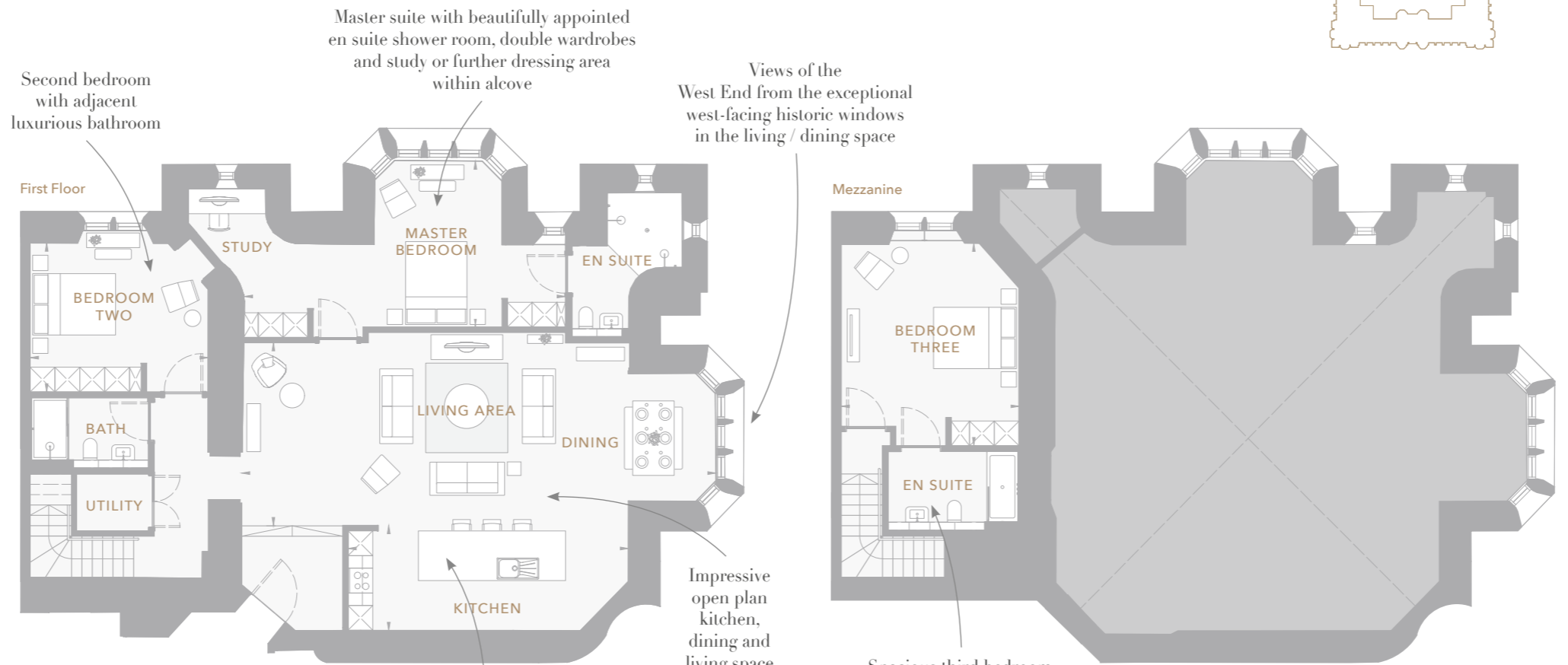
AT DONALDSON'S



Apartment F24

A spacious and bright duplex apartment with chapel and garden views

Step into this stylish and spacious first floor apartment and enjoy views of Donaldson's iconic chapel and superb landscaped gardens. The spacious open plan kitchen, dining and living space is perfect for entertaining and relaxing, and benefits from views out to the West End. The accommodation is arranged over two levels, with a particularly generous bedroom with contemporary en suite occupying the upper floor. The apartment features original working shutters, fully restored and refurbished throughout.



Dimensions

Total NSA 1,878 sq ft (174.5 sq m)

Living / Dining	37' 7" x 14' 5"	(11.45m x 4.40m)
Kitchen	22' 3" x 8' 4"	(6.77m x 2.54m)
Master Bedroom	25' 5" x 13' 2"	(7.75m x 4.01m)
Bedroom 2	14' 1" x 11' 9"	(4.30m x 3.60m)
Bedroom 3	16' 8" x 14' 1"	(5.09m x 4.30m)



Photography shown may be of similar apartments at Donaldson's and is indicative only