



**BURCOTE PARK**  
WOOD BURCOTE

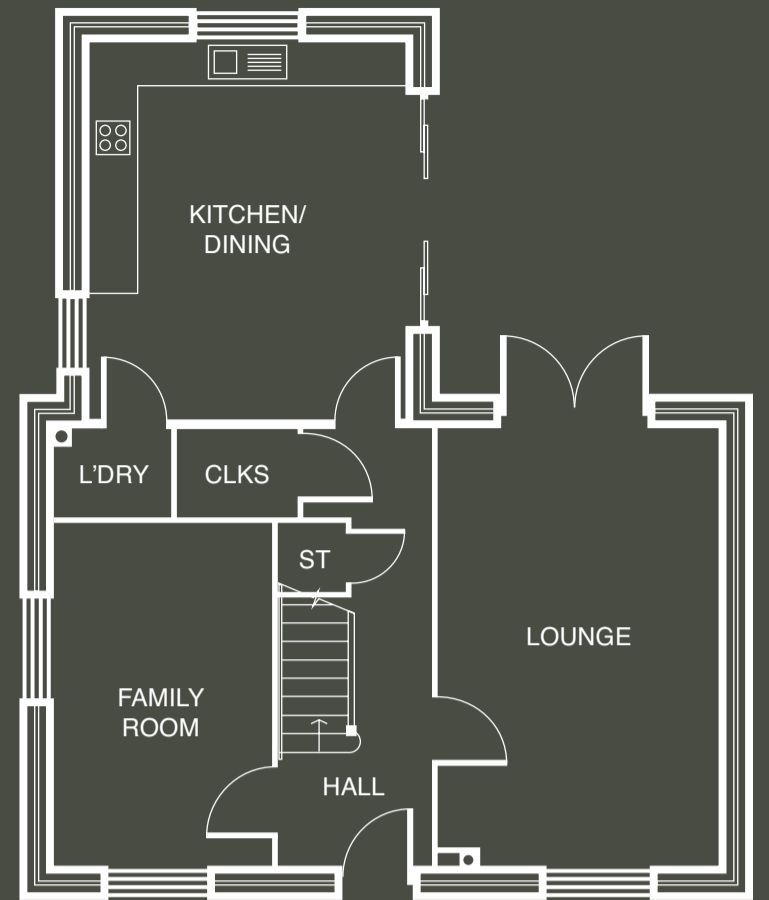
# Cedar

## 4 BEDROOM HOME

Plot No. 141, 146, 153, 156, 164, 170, 175, 178, 179, 189, 190, 197

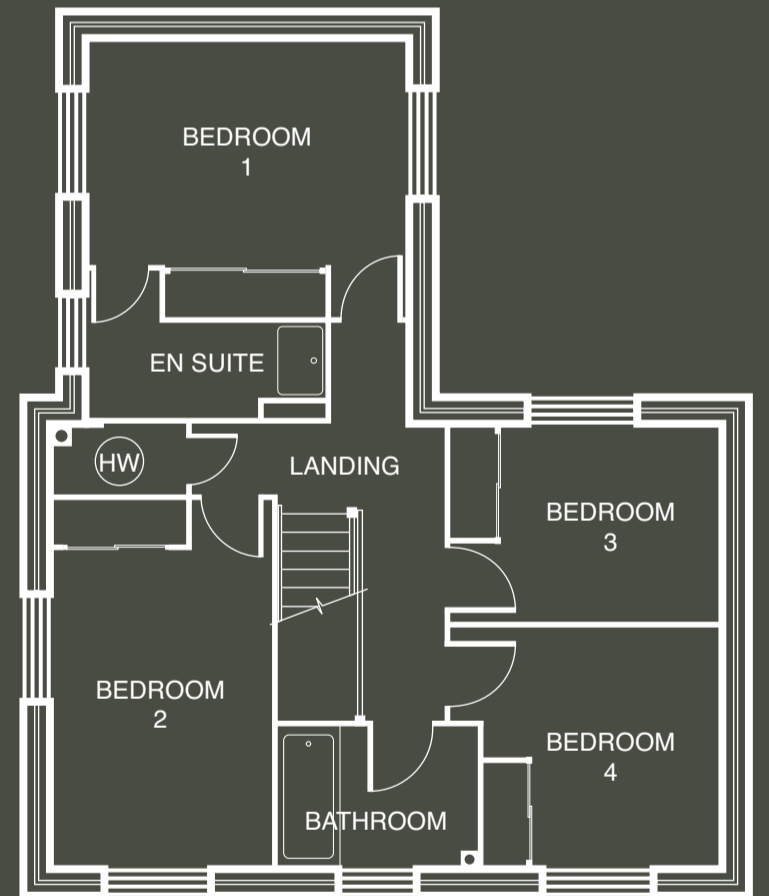
Quality doesn't have to be complicated. Sometimes, the simplest things have an undeniable elegance and charm, as you'll discover with the beautifully laid out Cedar.

Simple lines make the most of the space, while inspired designs let the life and light flow freely through the heart of the home.



### GROUND FLOOR

<b>LOUNGE</b>	<b>17'10" X 11'5"</b>	<b>5.42 X 3.48M</b>
<b>KITCHEN/DINING</b>	<b>15'0" X 13'0"</b>	<b>4.57 X 3.96M</b>
<b>FAMILY ROOM</b>	<b>13'10" X 8'11"</b>	<b>4.23 X 2.72M</b>
<b>CLOAKS</b>	<b>4'9" X 3'7"</b>	<b>1.46 X 1.11M</b>
<b>LAUNDRY</b>	<b>4'10" X 3'7"</b>	<b>1.48 X 1.11M</b>



### FIRST FLOOR

<b>BEDROOM 1</b>	<b>13'0" X 11'2"*</b>	<b>3.96 X 3.41M*</b>
<b>EN SUITE</b>	<b>9'6"* X 5'9"*</b>	<b>2.91* X 1.75M*</b>
<b>BEDROOM 2</b>	<b>14'10"* X 8'11"</b>	<b>4.51* X 2.72M</b>
<b>BEDROOM 3</b>	<b>11'0" X 7'9"</b>	<b>3.35 X 2.36M</b>
<b>BEDROOM 4</b>	<b>11'0"* X 9'9"</b>	<b>3.35* X 2.97M</b>
<b>BATHROOM</b>	<b>7'10" X 5'9"</b>	<b>2.39 X 1.76M</b>

NOTE: Sloping soffits to first floor. All wardrobes are optional and positions shown are for information only. \*Maximum dimension.

Customers should note this illustration is an example of the Cedar house type. All dimensions indicated are approximate and for illustrative purposes only. All wardrobes are subject to site specification, please see Sales Consultant for further details. Homes may be a 'handed' (mirror image) versions of the illustrations, and may be detached, semi-detached or terraced. Materials used may differ from plot to plot including render and roof tile colours. Detailed plans and specifications are available for inspection for each plot at our Marketing Suite during working hours and customers must check their individual specifications prior to making reservation.