



The Private Sale Collection





Welcome to Higgs Yard. A collection of exclusive private residences, set in the vibrant heart of SE24. Perfectly positioned at the crossroads of London's most dynamic neighbourhoods, Higgs Yard invites you to explore a world of endless discovery. Every day brings the excitement of something new and inspiring right at your doorstep.

## Discover Loughborough Junction's best kept secret

Higgs Yard is the new destination for those who seek quality and sophisticated living, offering cityscape views alongside vibrant culture and convenience. It presents a seamless choice for those desiring a lifestyle defined by elevated comfort and refined style.





Brockwell Park

## In easy reach is an understatement

Poised to shape the evolving South London skyline, Higgs Yard sits at a vibrant intersection of culture, connectivity, and community, heralding a new era of opportunity for Loughborough Junction. Between the dynamic eateries and stylish social spots of Brixton and the leafy serenity of Herne Hill, Higgs Yard is ideally positioned for those who crave discovery and an enriched lifestyle.

At the heart of a neighbourhood pulsing with energy, Higgs Yard completes the local tapestry, bringing more homes, businesses, and opportunities to this thriving community. Just steps from Loughborough Junction and with central London only 8 minutes away, Higgs Yard places everything you need, right on your doorstep.

The City

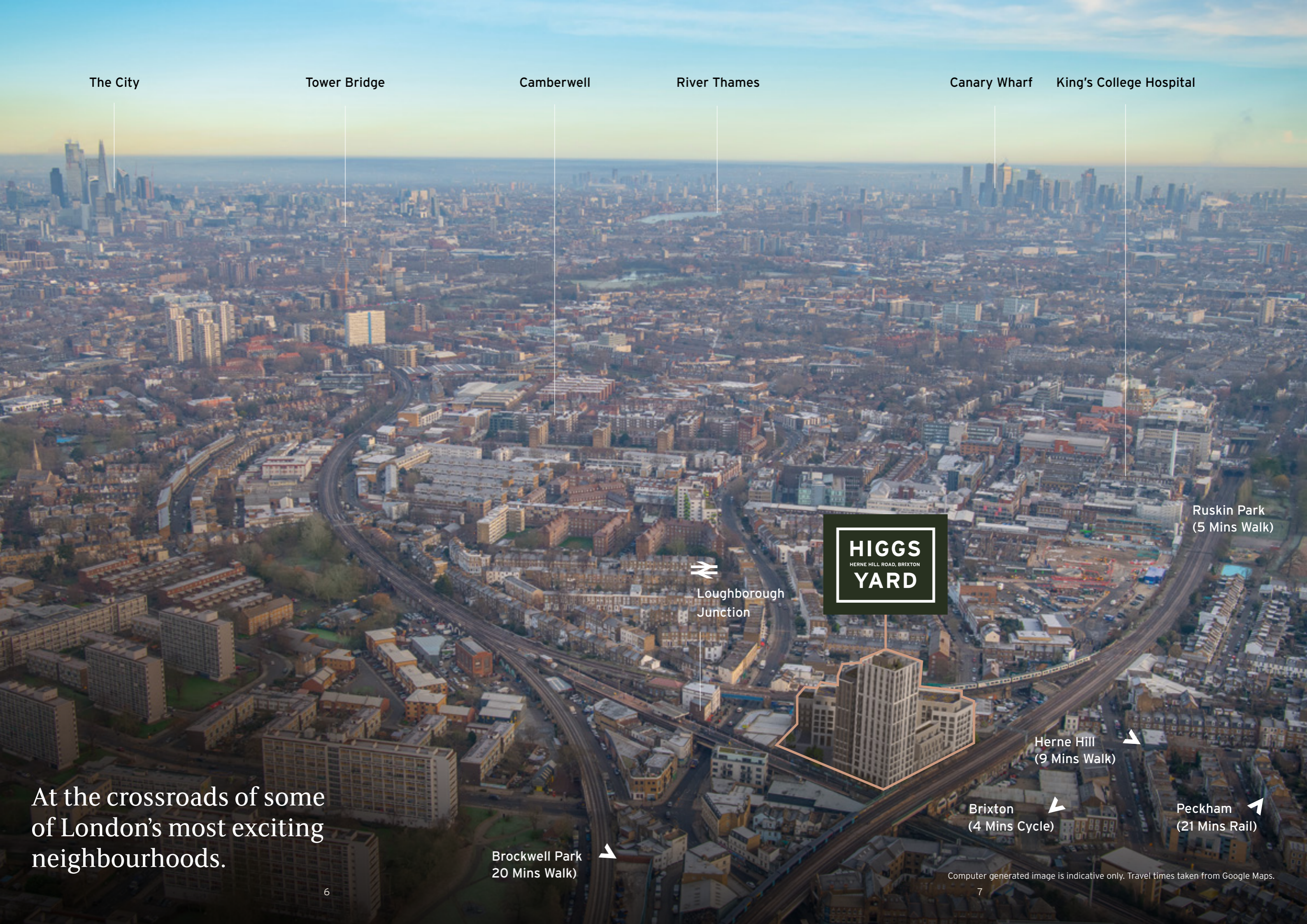
Tower Bridge

Camberwell

River Thames

Canary Wharf

King's College Hospital



**HIGGS**  
HERNE HILL ROAD, BRIXTON  
**YARD**

⇌  
Loughborough  
Junction

Ruskin Park  
(5 Mins Walk)

Herne Hill  
(9 Mins Walk)

Brixton  
(4 Mins Cycle)

Peckham  
(21 Mins Rail)

Brockwell Park  
(20 Mins Walk)

At the crossroads of some  
of London's most exciting  
neighbourhoods.

Computer generated image is indicative only. Travel times taken from Google Maps.

◀ Brixton 14 mins walk

▶ Loughborough Junction 2 mins walk



Site plan not to scale. Landscaping is indicative only.

## Higgs Yard

- Apartments 1-29 (16 Herne Hill Road)  
Private Sale

---

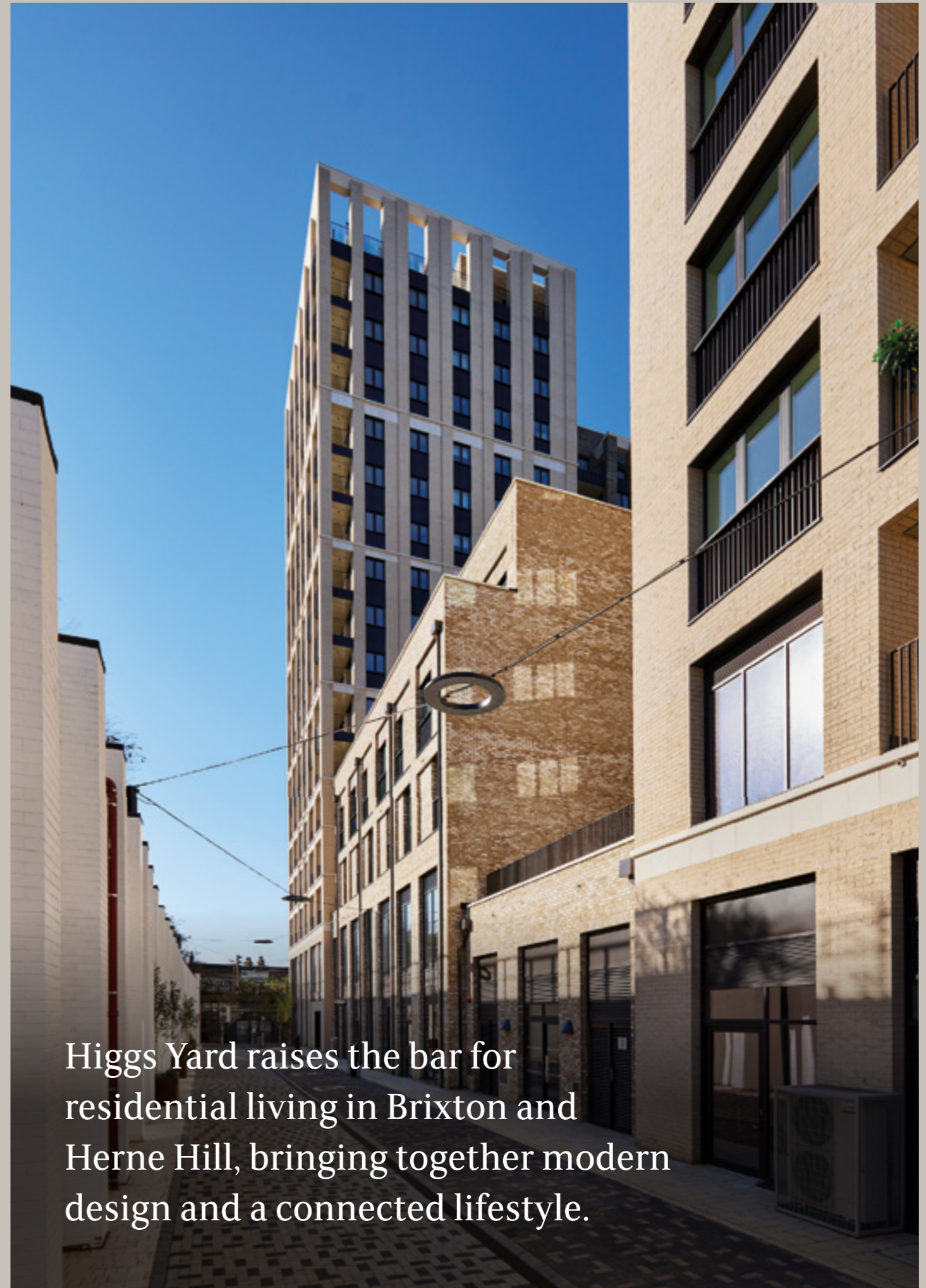
- Apartments 30-106 (16 Herne Hill Road)  
Private Sales & Shared Ownership

---

- Apartments 1-25 & 26-28 (8 Herne Hill Road)  
Affordable Rent

Featuring a curated selection of 1, 2 and 3-bedroom private residences, Higgs Yard sets a new standard for living in Brixton and Herne Hill. This landmark development paves the way for the future of this dynamic, ever-evolving neighbourhood, offering a modern lifestyle defined by quality and community.

The roof terrace and gardens are shared communal spaces accessible to all residents of Higgs Yard.



Higgs Yard raises the bar for residential living in Brixton and Herne Hill, bringing together modern design and a connected lifestyle.



## The perfect escape

Find your escape at Higgs Yard's roof terrace, an open-air retreat designed for calm amidst the city's vibrant energy. This beautifully landscaped space offers a refreshing break from urban life, complemented by private balconies for added serenity. Nestled in a neighbourhood with parks and greenery, Higgs Yard ensures tranquillity is always within reach, featuring a communal garden on site too.

# Your local neighbourhood

## Brixton - Eclectic Eateries & Social Spaces

1. Trinity Arms
2. Duke Of Edinburgh
3. Ritzy Cinema
4. Brixton O2 Academy
5. Pop Brixton
6. Brixton Village
7. Canova Hall
8. Brixton Art Club
9. Brixton Brewery & Tap Room
10. Electric Brixton
11. The Blues Kitchen
12. Effra Social
13. Hootananny Brixton
14. KaoSarn
15. Book Mongers



Hootananny Brixton

## Herne Hill - Slow Pace & Open Space

16. Farmers Market (Sundays)
17. Brockwell Lido
18. Herne Hill Velodrome
19. Dulwich Outdoor Gallery
20. The Half Moon Hotel & Restaurant
21. The Commercial Pub & Restaurant
22. Herne Hill Books

## Loughborough Junction - Friends & Connections

- |   |                               |
|---|-------------------------------|
| 23. The Platform Café                       | 29. BlocFit Rock Climbing Gym |
| 24. Friendship Adventure Brewery & Tap Room | 30. Harbour Cycles            |
| 25. Whirled Cinema                          | 31. Coop                      |
| 26. The Cambria Pub                         | 32. Four Boroughs Coffee Shop |
| 27. Clarkshaws Brewery & Tap Room           | 33. Artichoke Print Workshop  |
| 28. Tesco Express                           | 34. Craft Metropolis          |



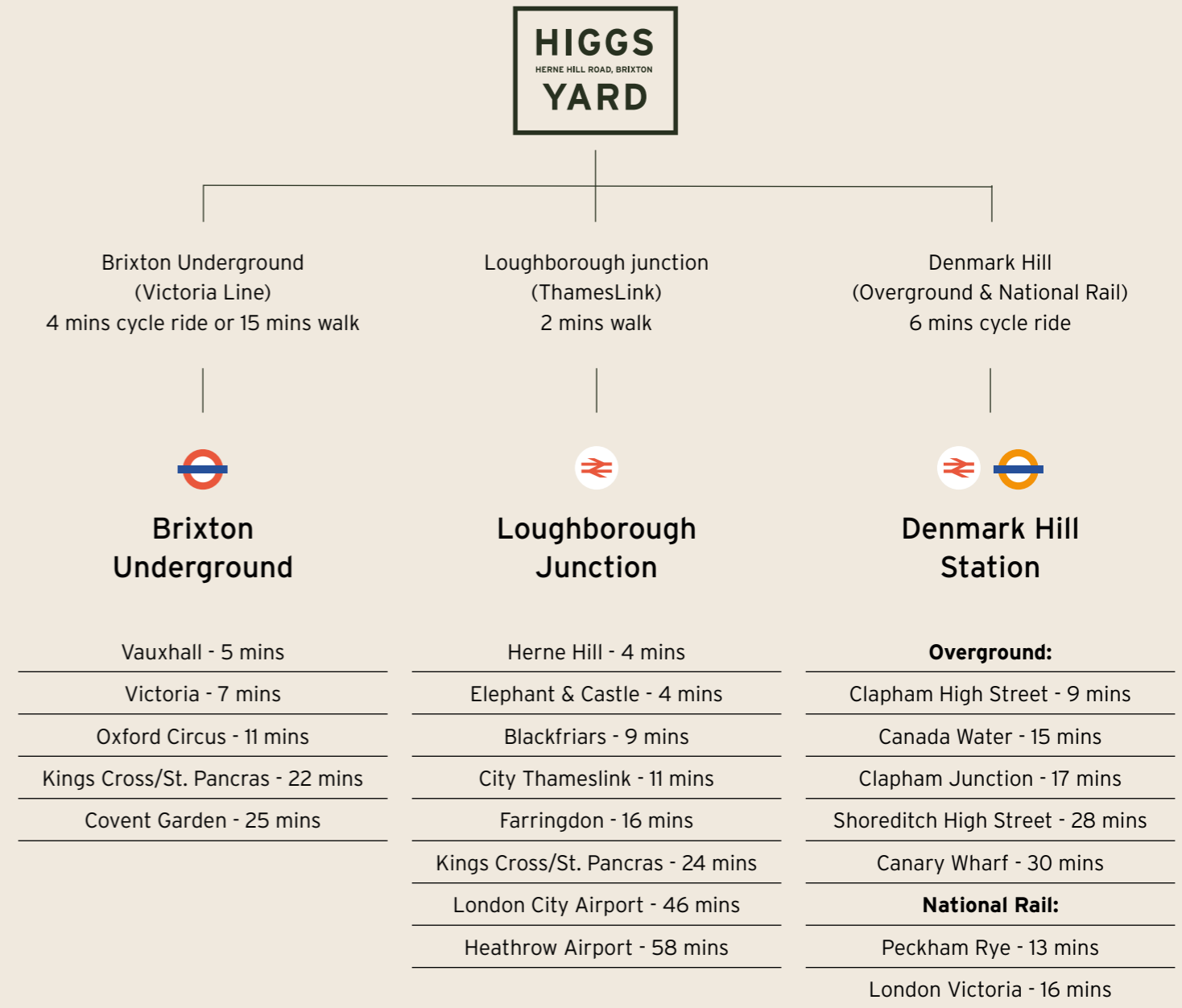
Map not to scale





Map not to scale

# Unmatched connectivity



Location is everything, and your new home at Higgs Yard places all of London at your doorstep. Whether for work, leisure, or discovery, Higgs Yard's exceptional connectivity ensures the city is yours to explore. With multiple rail and tube stations nearby, including the overground, Victoria Line, and Thameslink, London's best is always within easy reach. Live connected, and let every part of the capital be just a short journey away.

\*All times are taken from Google and National Rail from Higgs Yard and subject to traffic and service levels. Maps do not represent actual routes or train lines.

Your new home at Higgs Yard places you at the heart of a vibrant cultural tapestry, alive with energy and seamlessly connected to the city beyond. Step outside to discover hidden cultural gems just minutes away, ready to enrich your experience and connect you to a welcoming, dynamic community.



### Endless discoveries just steps away

Life at Higgs Yard offers a dynamic mix of restaurants, bars, street food spots, and charming cafés, perfect for exploration every day of the week. Discover unique local businesses, relax in the lush surroundings of nearby Brockwell Park, and experience the character of multiple thriving neighbourhoods—all just steps from your door. With everything from a lively comedy and music venue to a cosy coffee shop all within 250 yards, Higgs Yard invites you to embrace a lifestyle rich in vibrant, one-of-a-kind experiences.





Just a short walk away, the beautiful greenery of Brockwell Park and its 1930s Lido provide countless moments to savour.

Endless fascination  
around every corner



**Friendship Adventure  
(2 Minute Walk)**

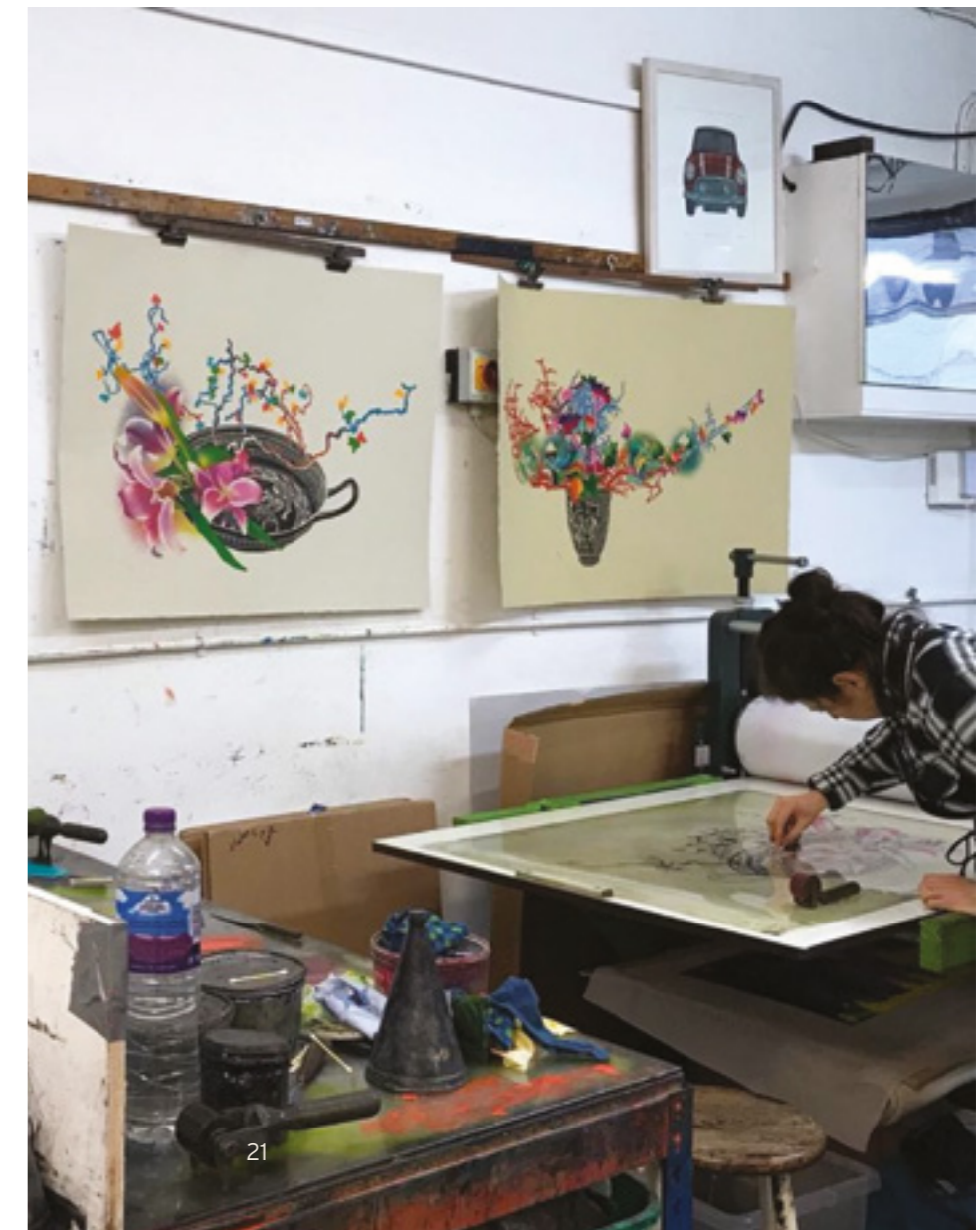
Friendship Adventure is a brewery dedicated to crafting refreshing, high-quality beer. Born from a plan between friends, it's a place where groups can come together to enjoy unique experiences. From yoga and comedy nights to quiz nights and live music, there's always something special on offer.

**Artichoke Print Workshop  
(3 Minute Walk)**

Artichoke Print Workshop, founded in 1992, continues to be a vital resource for artists working in print in London. Situated in the heart of Brixton, the studio hosts a number of highly sought after professional printers, it functions as an Open Access Printmaking workshop for artists, students and community groups.

**Four Boroughs  
(3 Minute Walk)**

Four Boroughs is all about quality—sourcing the finest raw materials for exceptional coffee crafted by highly trained baristas, ensuring every cup is expertly made. Alongside coffee, Four Boroughs offers small-batch, locally made kombucha, kimchi, vegan pastries, sourdough bread, and wraps—all created with love and care.



## An oasis of calm and community



Brockwell Park is a cherished green space in South London, and the iconic 1930s Brockwell Lido. This open-air pool, with its year-round swimming, offers a blend of leisure and vintage charm, making it a favourite spot for relaxation and community gatherings.



The Flower Lady, Herne Hill

Herne Hill is a lively, inviting neighbourhood celebrated for its lush green spaces, bustling market, and warm community spirit.



Railton Road



Blackbird Bakery, Herne hill

Just a 5 minute cycle from Herne Hill Centre and one stop from Loughborough Junction, Higgs Yard offers effortless access to the vibrant Herne Hill Market, where weekends come alive with stalls offering fresh cheese, vintage clothing, and mouth-watering street food. Every visit brings something new, making Herne Hill a true hidden gem of South London—and it's all right on your doorstep.

The streets and railway arches around Herne Hill are brimming with discoveries. From charming bookshops and greengrocers to vibrant live music venues and new dining spots, there's something for everyone here. Just a short walk from Higgs Yard lies The Half Moon, a historic pub with a storied past, frequented by icons like Dylan Thomas, John Ruskin, and U2. With an array of tempting independent restaurants nearby, you'll have endless opportunities to indulge in exceptional cuisine and soak up the neighbourhood's unique charm.



Higgs Yard is just a short walk from the cultural heart of South London - Brixton, a lively hub filled with creativity, diversity, and energy.



Renowned for its 1970s charm and character, Brixton is the ultimate destination for those seeking festivals, stylish bars, cosmopolitan eateries, and a vibrant arts scene. With a rich cultural heritage, Brixton stands as the heart of Afro-Caribbean culture in Britain, adorned with colourful murals painted by local artists. From the historic Ritzy Cinema to the eclectic Brixton Markets, you're sure to find exactly what you're looking for—and perhaps uncover a few delightful surprises along the way.



Brixton Village

A neighbourhood full of  
flavour and character



Brixton makes sustainable living effortlessly stylish, with vintage shops that upcycle garments and zero-waste organic food stores at your fingertips. Known for its thriving artistic scene, Brixton is home to regular exhibitions, museums, and galleries, offering endless opportunities to immerse yourself in local culture and creativity.







Alphabet Nursery School (Outstanding)  
Chatham Hall, 152 Northcote Road, Battersea, SW11 6RD

Angel Oak Academy (Outstanding)  
Burcher Gale Grove, London, SE15 6FL

Bishop Thomas Grant Catholic Secondary School (Outstanding)  
Belltrees Grove, London, SW16 2HY

Ashmole Primary School (Outstanding)  
Ashmole Street, London, SW8 1NT

Brixton Community Nursery (Outstanding)  
Brixton Recreation Centre, 27 Brixton Station Road, SW9 8QQ

Culture isn't the only outstanding quality of the neighbourhood. The Brixton and Herne Hill area are home to a number of OFSTED rated Outstanding schools, making it a perfect place to raise children. The top 5 performing primary & secondary schools near Brixton & Herne Hill.\*

\*Based on Ofsted inspection rating (Source: Locrating.com 2022)



2 bedroom show apartment



Higgs Yard offers a selection of 1, 2 and 3-bedroom private residences, each thoughtfully designed with modern aesthetics, high specifications, and private balconies. Prioritising your well-being, residents can enjoy a charming rooftop garden and secure cycle storage.

Our homes blend modern elegance with timeless sophistication.





Kitchen areas in 1 and 2 bedroom show apartments

## Kitchen & Decorative Finishes

Symphony handleless kitchen with Hacienda Platinum wall units and Hacienda Nordic Blue base units

Matt laminate finishes to cabinets with concealed lighting under wall cabinets

Silestone work surfaces in Whitestorm

Stainless steel undermount bowl sink with chrome mixer tap

Bosch induction hob with feature glass splashback

Re-circulating integrated extractor

Bosch integrated single oven

Bosch stainless steel combination microwave oven

Integrated multi-function fridge/freezer and dishwasher

Pergo laminate floor finishes in light oak to hallway, kitchen, living and dining area

Cormar Primo carpet in Alloy Grey to bedrooms

Feature entrance door with brushed chrome handle

Painted internal doors with satin door handles

Painted architraves and skirting

Built-in wardrobe to main bedrooms in Pebble Grey Blinds to selected windows

High efficiency double glazed composite windows

Ceilings and walls painted in white emulsion





Balcony & bedroom in 2 bedroom show apartment

### Balconies, Utility & Electricals

Well-proportioned balconies with handrails

External wall mounted lighting

LED energy-efficient downlighters throughout

Television (terrestrial and SkyQ) points to living room and main bedroom\*

Telephone and BT fibre optic data points to living area

Bosch washing machine

Light switches with white finish

Heating and hot water from communal system with metered water/electric supply

Mechanical ventilation with heat recovery - bringing filtered, fresh air into the apartment

Underfloor heating



1 bedroom show apartment

Each space is meticulously crafted with premium materials, showcasing sleek, contemporary finishes that embody both quality and sophistication.



1 bedroom show apartment



Bathroom in 2 bedroom show apartment



## Bathroom & Ensuite

Classic white bath with shower over and glass screen

Chrome thermostatic wall-mounted mixer with handheld shower and wall-mounted showerhead

White integrated basin with mixer tap in chrome finish

Bespoke lacquer finish vanity cabinet with white shaver socket

White wall mounted WC pan with soft close seat, concealed cistern and dual flush button

Chrome thermostatically controlled heated towel radiator

Large-format wall and floor tiles in grey or white\*

Extractor fan

Frameless glass shower screen with classic white shower tray to ensuite

This premium bathroom finish is available in select apartments.



## Security

Video entry system to entrance lobby viewed by individual apartment handset/screen

Power and telephone points provided to all apartments

Mains supply smoke detectors and domestic sprinkler systems

Multi-point locking, door restrictor and spy hole viewer fitted to all apartment entrance doors

999 year lease

10-year build warranty

## Amenities

Monitored CCTV

Private roof terrace

Car club

Secure cycle store

35,992 sq ft of commercial and office space

## Communal

Passenger lifts to all residential floor levels

Lobby to main entrance

Letterboxes provided for all apartments within communal entrance lobbies

Landscaped gardens

Children's play area

Higgs Yard is a pet friendly scheme

## Sustainability

### Every home will:

Be energy efficient, with high levels of insulation and energy efficient appliances, fixtures and fittings.

Be water efficient, with water saving fixtures and fittings

Make use of air source heat pumps

Speak to a sales advisor for more information.

\*Subject to purchaser's own subscription.



The apartment buildings at Higgs Yard will be overseen by Peabody, with a service charge payable by each homeowner for the upkeep provided. Please note, individual modifications to specifications, layouts, or plans for specific homes cannot be accommodated. In cases where specified products may become unavailable, a comparable alternative will be offered. Peabody reserves the right to make these adjustments as necessary.



2 bedroom show apartment

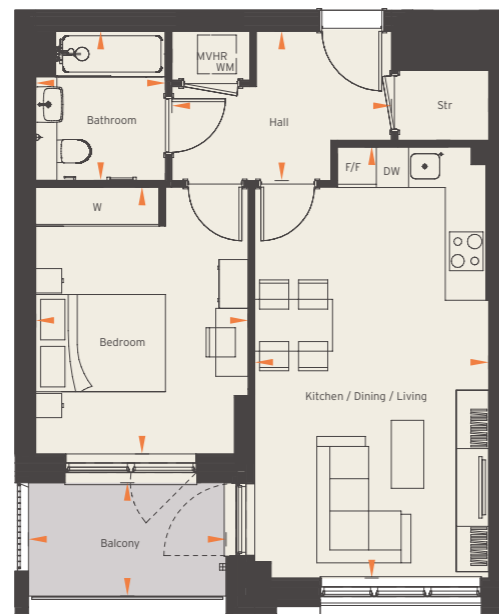
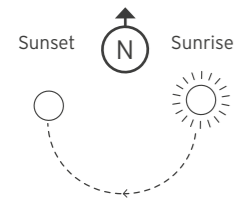
**HIGGS**  
HERNE HILL ROAD, BRIXTON  
**YARD**

The Private Sale Collection - Plans

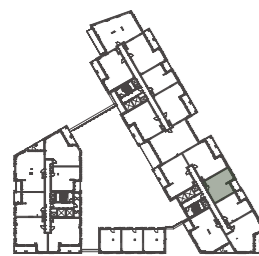
## FLAT 3, 9, 15, 21 1 BEDROOM

Gross Internal Area: 51.1m<sup>2</sup>

Balcony	3.0 x 1.7m	10'0" x 5'9"
Bathroom	2.3 x 2.0m	7'7" x 6'7"
Bedroom	4.1 x 3.3m	13'6" x 10'9"
Kitchen/Dining/Living	6.6 x 3.6m	21'10" x 11'10"

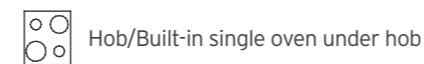


SECOND TO FOURTH FLOOR



16 HERNE HILL ROAD	
FLOOR	FLAT NO.
2	3
3	9
4	15
5	21

► Measuring points



F/F - Fridge Freezer

DW - Integrated Dishwasher

W/M - Washing Machine is in MVHR / Utility cupboard

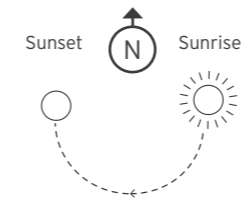
W - Fitted Wardrobe

**Disclaimer:** Apartment layouts provide approximate measurements only. Dimensions, which are taken from the indicated points of measurement, are for guidance only and are not intended to be used for carpet sizes, appliance space or items of furniture. Apartment areas are provided as gross internal areas and may vary. Bathroom and kitchen layouts are indicative only and are subject to change. Wardrobe size and position may vary. Ceiling height may vary within select apartments, please speak to the sales team for more information. All private outdoor space dimensions and areas are approximate and may vary. The information contained within this document does not constitute part of any offer, contract or warranty. Whilst the plans have been prepared with all due care for the convenience of the intending purchaser, the information contained herein is a preliminary guide only.

## FLAT 4, 10, 16 1 BEDROOM

Gross Internal Area: 51.3m<sup>2</sup>

Balcony	3.0 x 1.9m	9'9" x 6'1"
Bathroom	2.3 x 2.0m	7'7" x 6'7"
Bedroom	4.1 x 3.3m	13'6" x 10'9"
Kitchen/Dining/Living	6.6 x 3.6m	21'10" x 11'10"

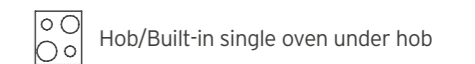


SECOND TO FOURTH FLOOR



16 HERNE HILL ROAD	
FLOOR	FLAT NO.
2	4
3	10
4	16

► Measuring points



F/F - Fridge Freezer

DW - Integrated Dishwasher

W/M - Washing Machine is in MVHR / Utility cupboard

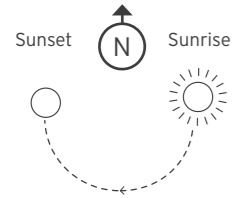
W - Fitted Wardrobe

**Disclaimer:** Apartment layouts provide approximate measurements only. Dimensions, which are taken from the indicated points of measurement, are for guidance only and are not intended to be used for carpet sizes, appliance space or items of furniture. Apartment areas are provided as gross internal areas and may vary. Bathroom and kitchen layouts are indicative only and are subject to change. Wardrobe size and position may vary. Ceiling height may vary within select apartments, please speak to the sales team for more information. All private outdoor space dimensions and areas are approximate and may vary. The information contained within this document does not constitute part of any offer, contract or warranty. Whilst the plans have been prepared with all due care for the convenience of the intending purchaser, the information contained herein is a preliminary guide only.

## FLAT 27 1 BEDROOM

Gross Internal Area: 51.2m<sup>2</sup>

Balcony	4.7 x 1.5m	15'4" x 4'10"
Bathroom	2.0 x 2.2m	6'7" x 7'3"
Bedroom	3.4 x 4.2m	11'1" x 13'10"
Kitchen/Dining/Living	4.7 x 5.9m	15'4" x 19'3"

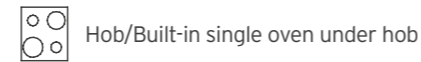


SIXTH FLOOR



16 HERNE HILL ROAD	
FLOOR	FLAT NO.
6	27

### ► Measuring points



F/F - Fridge Freezer

DW - Integrated Dishwasher

W/M - Washing Machine is in MVHR / Utility cupboard

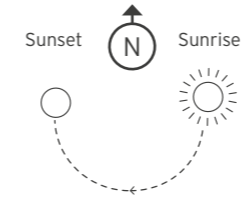
W - Fitted Wardrobe

**Disclaimer:** Apartment layouts provide approximate measurements only. Dimensions, which are taken from the indicated points of measurement, are for guidance only and are not intended to be used for carpet sizes, appliance space or items of furniture. Apartment areas are provided as gross internal areas and may vary. Bathroom and kitchen layouts are indicative only and are subject to change. Wardrobe size and position may vary. Ceiling height may vary within select apartments, please speak to the sales team for more information. All private outdoor space dimensions and areas are approximate and may vary. The information contained within this document does not constitute part of any offer, contract or warranty. Whilst the plans have been prepared with all due care for the convenience of the intending purchaser, the information contained herein is a preliminary guide only.

## FLAT 1, 7, 13, 19, 25 2 BEDROOM

Gross Internal Area: 73.4m<sup>2</sup>

Balcony	6.1 x 1.9	20'1 x 6'1
Bathroom	2.2 x 2.0	7'3 x 6'7
Bedroom 1	5.1 x 3.4	16'10 x 11'0
Bedroom 2	4.0 x 3.4	13'0 x 11'0
Ensuite	2.2 x 1.6	7'3 x 5'3
Kitchen/Dining/Living	7.8 x 3.5	20'5 x 10'6

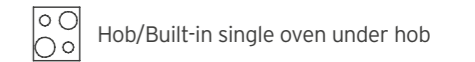


SECOND - SIXTH FLOOR



16 HERNE HILL ROAD	
FLOOR	FLAT NO.
2	1
3	7
4	13
5	19
6	25

### ► Measuring points



F/F - Fridge Freezer

DW - Integrated Dishwasher

W/M - Washing Machine is in MVHR / Utility cupboard

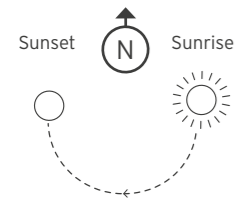
W - Fitted Wardrobe

**Disclaimer:** Apartment layouts provide approximate measurements only. Dimensions, which are taken from the indicated points of measurement, are for guidance only and are not intended to be used for carpet sizes, appliance space or items of furniture. Apartment areas are provided as gross internal areas and may vary. Bathroom and kitchen layouts are indicative only and are subject to change. Wardrobe size and position may vary. Ceiling height may vary within select apartments, please speak to the sales team for more information. All private outdoor space dimensions and areas are approximate and may vary. The information contained within this document does not constitute part of any offer, contract or warranty. Whilst the plans have been prepared with all due care for the convenience of the intending purchaser, the information contained herein is a preliminary guide only.

## FLAT 20 2 BEDROOM

Gross Internal Area: 74.8m<sup>2</sup>

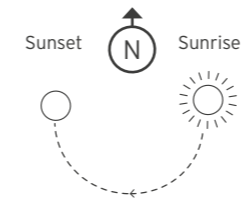
Balcony	6.1 x 1.9m	20'2" x 6'2"
Bathroom	2.0 x 2.2m	6'7" x 7'3"
Bedroom 1	3.4 x 5.1m	11'0" x 16'10"
Bedroom 2	3.3 x 4.0m	10'11" x 13'0"
Ensuite	1.6 x 2.2m	5'3" x 7'3"
Kitchen/Dining/Living	7.8 x 3.7m	25'6" x 12'2"



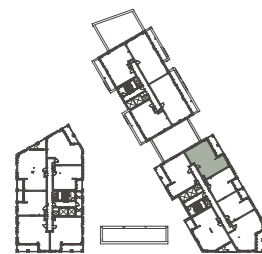
## FLAT 11, 17, 23 2 BEDROOM

Gross Internal Area: 73.7m<sup>2</sup>

Balcony	5.6 x 1.9m	18'5" x 6'1"
Bathroom	2.3 x 2.0m	7'8" x 6'7"
Bedroom 1	5.6 x 3.1m	18'3" x 10'3"
Bedroom 2	4.2 x 2.7m	13'9" x 9'0"
Ensuite	2.2 x 1.6m	7'3" x 5'3"
Kitchen/Dining/Living	4.8 x 5.7m	15'11" x 18'8"

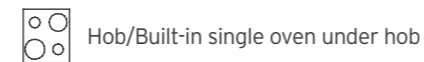


FIFTH FLOOR



16 HERNE HILL ROAD	
FLOOR	FLAT NO.
5	20

### ► Measuring points



F/F - Fridge Freezer

DW - Integrated Dishwasher

W/M - Washing Machine is in MVHR / Utility cupboard

W - Fitted Wardrobe

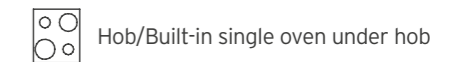
**Disclaimer:** Apartment layouts provide approximate measurements only. Dimensions, which are taken from the indicated points of measurement, are for guidance only and are not intended to be used for carpet sizes, appliance space or items of furniture. Apartment areas are provided as gross internal areas and may vary. Bathroom and kitchen layouts are indicative only and are subject to change. Wardrobe size and position may vary. Ceiling height may vary within select apartments, please speak to the sales team for more information. All private outdoor space dimensions and areas are approximate and may vary. The information contained within this document does not constitute part of any offer, contract or warranty. Whilst the plans have been prepared with all due care for the convenience of the intending purchaser, the information contained herein is a preliminary guide only.

SECOND TO FIFTH FLOOR



16 HERNE HILL ROAD	
FLOOR	FLAT NO.
3	11
4	17
5	23

### ► Measuring points



F/F - Fridge Freezer

DW - Integrated Dishwasher

W/M - Washing Machine is in MVHR / Utility cupboard

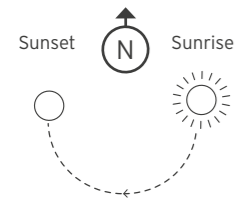
W - Fitted Wardrobe

**Disclaimer:** Apartment layouts provide approximate measurements only. Dimensions, which are taken from the indicated points of measurement, are for guidance only and are not intended to be used for carpet sizes, appliance space or items of furniture. Apartment areas are provided as gross internal areas and may vary. Bathroom and kitchen layouts are indicative only and are subject to change. Wardrobe size and position may vary. Ceiling height may vary within select apartments, please speak to the sales team for more information. All private outdoor space dimensions and areas are approximate and may vary. The information contained within this document does not constitute part of any offer, contract or warranty. Whilst the plans have been prepared with all due care for the convenience of the intending purchaser, the information contained herein is a preliminary guide only.

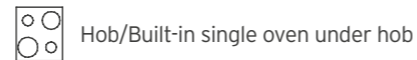
## FLAT 72 2 BEDROOM

Gross Internal Area: 71.5m<sup>2</sup>

Balcony	6.1 x 1.9m	20'1" x 6'1"
Bathroom	2.2 x 2.0m	7'3" x 6'7"
Bedroom 1	5.3 x 3.5m	17'4" x 11'7"
Bedroom 2	2.8 x 4.3m	9'0" x 14'2"
Ensuite	2.2 x 1.6m	7'3" x 5'3"
Kitchen/Dining/Living	4.9 x 5.6m	16'0" x 18'4"



► Measuring points



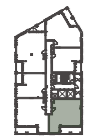
F/F - Fridge Freezer

DW - Integrated Dishwasher

W/M - Washing Machine is in MVHR / Utility cupboard

W - Fitted Wardrobe

NINTH TO FIFTEENTH FLOOR



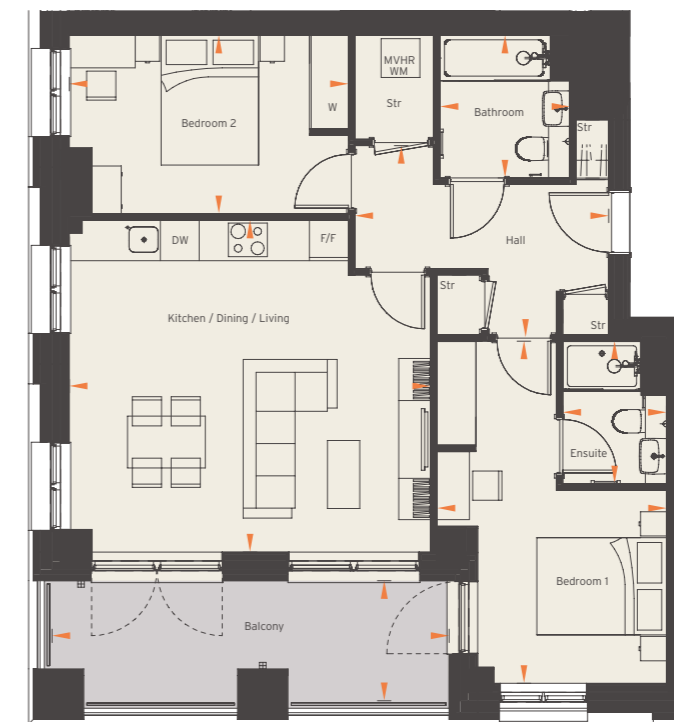
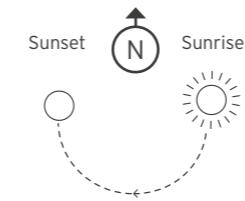
16 HERNE HILL ROAD	
FLOOR	FLAT NO.
9	72

**Disclaimer:** Apartment layouts provide approximate measurements only. Dimensions, which are taken from the indicated points of measurement, are for guidance only and are not intended to be used for carpet sizes, appliance space or items of furniture. Apartment areas are provided as gross internal areas and may vary. Bathroom and kitchen layouts are indicative only and are subject to change. Wardrobe size and position may vary. Ceiling height may vary within select apartments, please speak to the sales team for more information. All private outdoor space dimensions and areas are approximate and may vary. The information contained within this document does not constitute part of any offer, contract or warranty. Whilst the plans have been prepared with all due care for the convenience of the intending purchaser, the information contained herein is a preliminary guide only.

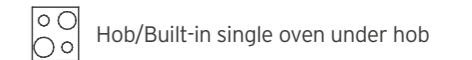
## FLAT 73 2 BEDROOM

Gross Internal Area: 73.8m<sup>2</sup>

Balcony	1.9 x 6.1m	6'1" x 20'1"
Bathroom	2.2 x 2.0m	7'3" x 6'7"
Bedroom 1	5.3 x 3.5m	17'4" x 11'7"
Bedroom 2	2.8 x 4.3m	9'0" x 14'1"
Ensuite	2.2 x 1.6m	7'3" x 5'3"
Kitchen/Dining/Living	5.1 x 5.6m	16'10" x 18'3"



► Measuring points



F/F - Fridge Freezer

DW - Integrated Dishwasher

W/M - Washing Machine is in MVHR / Utility cupboard

W - Fitted Wardrobe

NINTH TO FIFTEENTH FLOOR



16 HERNE HILL ROAD	
FLOOR	FLAT NO.
9	73

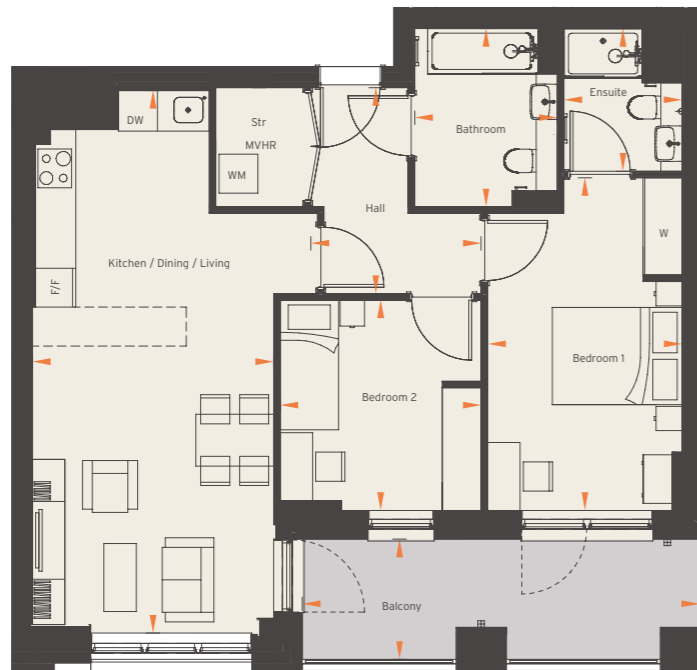
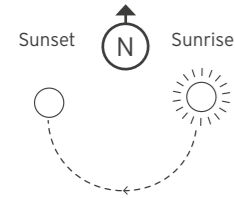
**Disclaimer:** Apartment layouts provide approximate measurements only. Dimensions, which are taken from the indicated points of measurement, are for guidance only and are not intended to be used for carpet sizes, appliance space or items of furniture. Apartment areas are provided as gross internal areas and may vary. Bathroom and kitchen layouts are indicative only and are subject to change. Wardrobe size and position may vary. Ceiling height may vary within select apartments, please speak to the sales team for more information. All private outdoor space dimensions and areas are approximate and may vary. The information contained within this document does not constitute part of any offer, contract or warranty. Whilst the plans have been prepared with all due care for the convenience of the intending purchaser, the information contained herein is a preliminary guide only.

## FLAT 2 2 BEDROOM

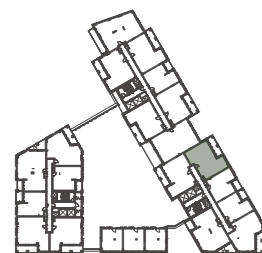
Gross Internal Area: 74.8m<sup>2</sup>

Wheelchair friendly

Balcony	6.1 x 1.9m	20'1" x 6'1"
Bathroom	2.2 x 2.8m	7'3" x 9'0"
Bedroom 1	3.0 x 5.1m	9'10" x 16'10"
Bedroom 2	3.1 x 3.2m	10'2" x 10'8"
Ensuite	1.8 x 2.2m	6'0" x 7'3"
Kitchen/Dining/Living	3.7 x 8.4m	12'2" x 27'5"

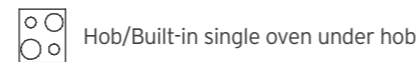


SECOND TO FOURTH FLOOR



16 HERNE HILL ROAD	
FLOOR	FLAT NO.
2	2

### ▶ Measuring points



F/F - Fridge Freezer

DW - Integrated Dishwasher

W/M - Washing Machine is in MVHR / Utility cupboard

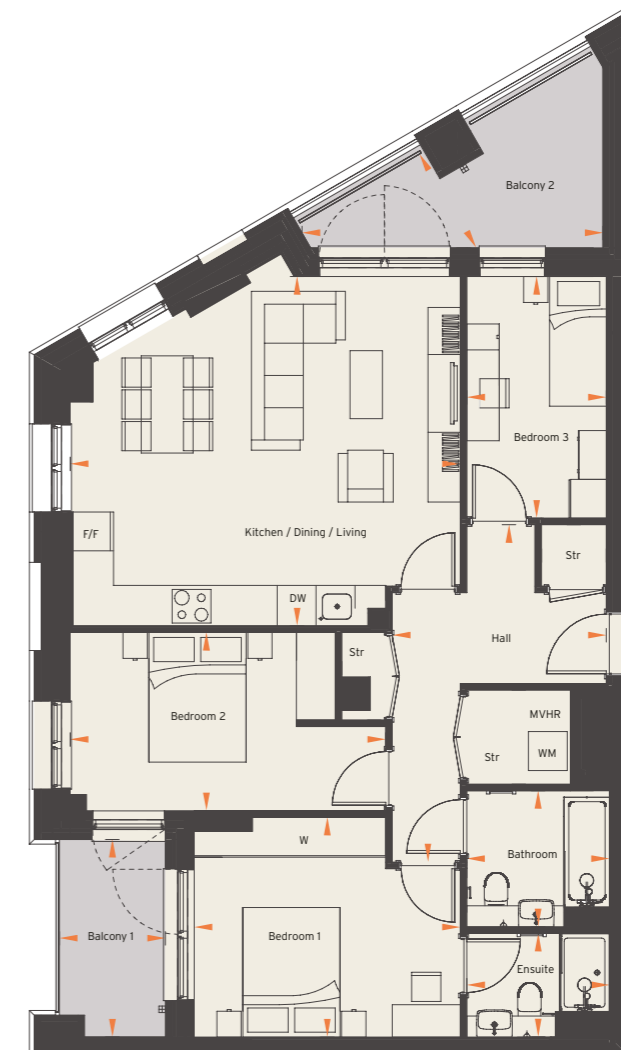
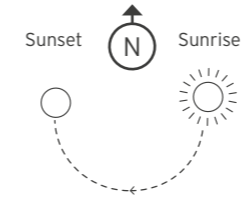
W - Fitted Wardrobe

**Disclaimer:** Apartment layouts provide approximate measurements only. Dimensions, which are taken from the indicated points of measurement, are for guidance only and are not intended to be used for carpet sizes, appliance space or items of furniture. Apartment areas are provided as gross internal areas and may vary. Bathroom and kitchen layouts are indicative only and are subject to change. Wardrobe size and position may vary. Ceiling height may vary within select apartments, please speak to the sales team for more information. All private outdoor space dimensions and areas are approximate and may vary. The information contained within this document does not constitute part of any offer, contract or warranty. Whilst the plans have been prepared with all due care for the convenience of the intending purchaser, the information contained herein is a preliminary guide only.

## FLAT 39, 45, 51, 57, 63, 69 3 BEDROOM

Gross Internal Area: 86.8m<sup>2</sup>

Balcony	3.0 x 1.6m	10'0" x 5'4"
Balcony 2	1.8 x 4.6m	5'11" x 15'3"
Bathroom	2.1 x 2.2m	6'11" x 7'3"
Bedroom 1	3.4 x 4.1m	11'1" x 13'6"
Bedroom 2	2.8 x 4.9m	9'0" x 16'0"
Bedroom 3	3.7 x 2.2m	12'3" x 7'1"
Ensuite	1.6 x 2.2m	5'3" x 7'3"
Kitchen/Dining/Living	5.4 x 6.0m	17'8" x 19'9"

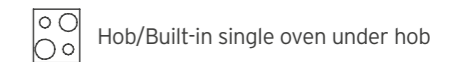


THIRD TO TWELFTH FLOOR



16 HERNE HILL ROAD	
FLOOR	PLOT NO.
3	39
4	45
5	51
6	57
7	63
8	69

### ▶ Measuring points



F/F - Fridge Freezer

DW - Integrated Dishwasher

W/M - Washing Machine is in MVHR / Utility cupboard

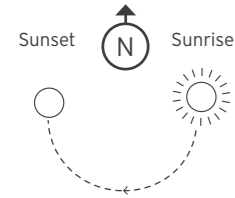
W - Fitted Wardrobe

**Disclaimer:** Apartment layouts provide approximate measurements only. Dimensions, which are taken from the indicated points of measurement, are for guidance only and are not intended to be used for carpet sizes, appliance space or items of furniture. Apartment areas are provided as gross internal areas and may vary. Bathroom and kitchen layouts are indicative only and are subject to change. Wardrobe size and position may vary. Ceiling height may vary within select apartments, please speak to the sales team for more information. All private outdoor space dimensions and areas are approximate and may vary. The information contained within this document does not constitute part of any offer, contract or warranty. Whilst the plans have been prepared with all due care for the convenience of the intending purchaser, the information contained herein is a preliminary guide only.

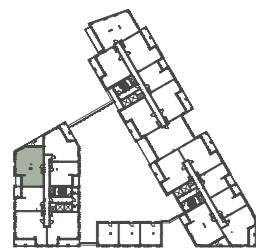
## FLAT 33 3 BEDROOM

Gross Internal Area: 88.7m<sup>2</sup>

Balcony	3.0 x 1.5m	10'0" x 4'10"
Balcony 2	1.8 x 4.6m	5'11" x 15'3"
Bathroom	2.1 x 2.2m	6'11" x 7'3"
Bedroom 1	4.1 x 3.4m	13'6" x 11'1"
Bedroom 2	2.8 x 4.9m	9'0" x 16'0"
Bedroom 3	3.7 x 2.2m	12'3" x 7'2"
Ensuite	1.6 x 2.2m	5'3" x 7'3"
Kitchen/Dining/Living	5.4 x 6.0m	17'8" x 19'9"

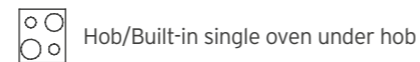


SECOND FLOOR



16 HERNE HILL ROAD	
FLOOR	FLAT NO.
2	33

► Measuring points



F/F - Fridge Freezer

DW - Integrated Dishwasher

W/M - Washing Machine is in MVHR / Utility cupboard

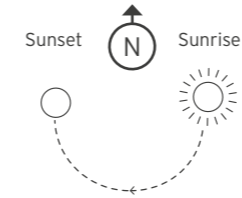
W - Fitted Wardrobe

**Disclaimer:** Apartment layouts provide approximate measurements only. Dimensions, which are taken from the indicated points of measurement, are for guidance only and are not intended to be used for carpet sizes, appliance space or items of furniture. Apartment areas are provided as gross internal areas and may vary. Bathroom and kitchen layouts are indicative only and are subject to change. Wardrobe size and position may vary. Ceiling height may vary within select apartments, please speak to the sales team for more information. All private outdoor space dimensions and areas are approximate and may vary. The information contained within this document does not constitute part of any offer, contract or warranty. Whilst the plans have been prepared with all due care for the convenience of the intending purchaser, the information contained herein is a preliminary guide only.

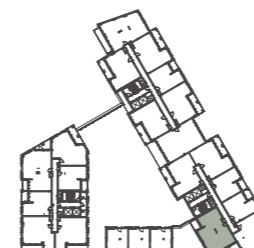
## FLAT 6, 12, 18 3 BEDROOM

Gross Internal Area: 86.7m<sup>2</sup>

Balcony	2.8 x 1.9m	9'3" x 6'1"
Balcony 2	1.7 x 5.4m	5'8" x 17'9"
Bathroom	2.2 x 2.0m	7'2" x 6'7"
Bedroom 1	4.2 x 3.4m	13'10" x 11'1"
Bedroom 2	4.9 x 2.9m	16'2" x 9'7"
Bedroom 3	2.2 x 3.7m	7'3" x 12'3"
Ensuite	2.2 x 1.6m	7'2" x 5'3"
Kitchen/Dining/Living	6.1 x 5.2m	20'1" x 17'2"



SECOND TO FIFTH FLOOR



16 HERNE HILL ROAD	
FLOOR	FLAT NO.
2	6
3	12
4	18

► Measuring points



F/F - Fridge Freezer

DW - Integrated Dishwasher

W/M - Washing Machine is in MVHR / Utility cupboard

W - Fitted Wardrobe

**Disclaimer:** Apartment layouts provide approximate measurements only. Dimensions, which are taken from the indicated points of measurement, are for guidance only and are not intended to be used for carpet sizes, appliance space or items of furniture. Apartment areas are provided as gross internal areas and may vary. Bathroom and kitchen layouts are indicative only and are subject to change. Wardrobe size and position may vary. Ceiling height may vary within select apartments, please speak to the sales team for more information. All private outdoor space dimensions and areas are approximate and may vary. The information contained within this document does not constitute part of any offer, contract or warranty. Whilst the plans have been prepared with all due care for the convenience of the intending purchaser, the information contained herein is a preliminary guide only.





# More than just a place to live

We at Peabody have a proud legacy of helping generations of homebuyers and residents find their place in thriving neighbourhoods, communities and homes for over 160 years.

The team at Peabody New Homes is dedicated to finding you a home that is more than just a place to live. A place you can call your own. A place to belong. A place that you're proud to call home.

Find @PeabodyNewHomes on



## BUILDING HISTORY

Formed over 160 years ago by the American financier and philanthropist George Peabody, Peabody is one of the UK's oldest and largest housing associations responsible for more than 108,000 homes\* and around 220,000 residents across London and the Home Counties.

## CUSTOMER FOCUS

Whether it's your first or forever home, we know that buying a new place can be a demanding time. Our sales team is committed to guiding you through the process and helping you every step of the way. We're proud to offer you a service that makes a difference.

## QUALITY, DESIGN & SUSTAINABILITY

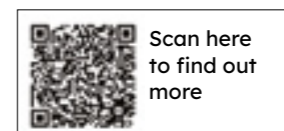
Peabody's reputation is one of the most respected in the housing industry renowned for quality, multi-award-winning and innovative design. We work with industry experts and continually monitor quality throughout the building process to reduce our impact on climate change, lessen our carbon footprint and create properties people are proud to call home.

Our Greener Homes Programme is our commitment to the environment and will aim to minimise our impact on the planet and support thriving neighbourhoods.



## SOCIAL IMPACT

Our social purpose is why we exist. We re-invest the surplus made from the sale of our homes to provide more homes and services to those who need it most. We deliver services that support customers and the wider communities that we work in, and invest in local projects through our Community Foundation.



\* 2023/2024 Annual Report



2 bedroom show apartment



Herne Hill Road, London, SE24 0AU  
[PeabodyNewHomes.co.uk/Higgs-Yard](https://PeabodyNewHomes.co.uk/Higgs-Yard)  
020 3925 0699

Every care has been taken in the preparation of this brochure. The details contained herein are for guidance only and should not be relied upon as exactly describing any of the particular material illustrated or written by any order under the Consumer Protection from Unfair Trading Regulations 2008. This information does not constitute a contract, part of a contract or warranty. The developer operates a programme of continuous product development. Features, internal and external, may vary from time to time and may differ from those shown in the brochure. Computer generated images and photography used within this brochure are indicative only. Higgs Yard is a marketing name and may not form part of the postal address for these properties. Information correct at time of print, January 2025.

**HIGGS**  
HERNE HILL ROAD, BRIXTON  
**YARD**