

THE BURRELTON



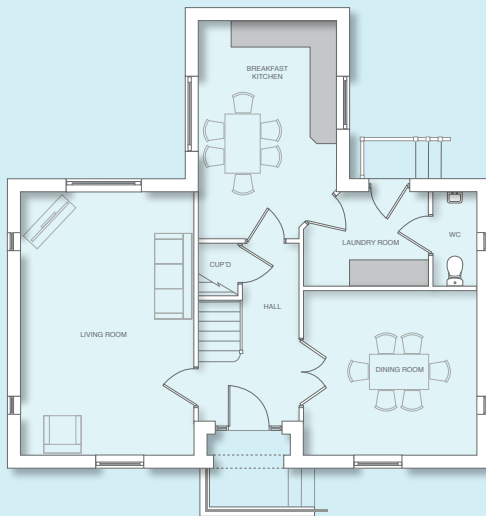
4 Bedroom Detached House

A seamless combination of comfort and practicality, the Burrelton 4 bedroom home offers spacious living accommodation for growing families.

Entering via the brick portico the hallway leads to the light and airy living room, breakfast kitchen and large laundry room. A separate dining room perfect for entertaining, guest cloakroom and handy under stair storage cupboard complete the ground floor.

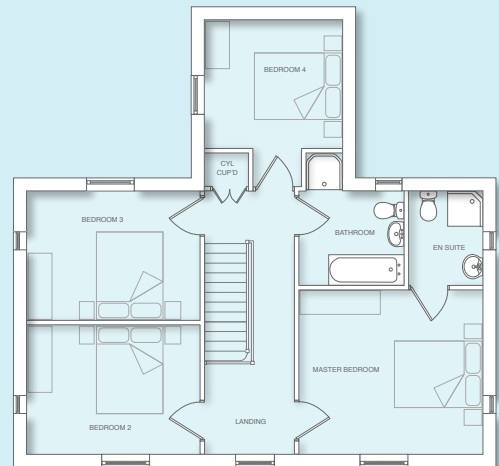
Upstairs the spacious galleried landing leads to the en-suite master bedroom, three further double bedrooms and family bathroom with separate shower cubicle.

The Burrelton is a fine example of a simple, flexible home with ample living space.



Ground Floor

Living Room	3950 x 6000 mm
	12' 11" x 19' 8"
Breakfast Kitchen	3150 x 4972 mm max
	10' 3" x 16' 3"
Laundry Room	2850 x 2150 mm max
	9' 4" x 7' 0"
Dining Room	3950 x 3750 mm max
	12' 11" x 12' 3"
Guest Cloakroom	1000 x 2150 mm
	3' 3" x 7' 0"



First Floor

Master Bedroom	4200 x 3750 mm
	13' 9" x 12' 3"
En-suite	1700 x 2150 mm
	5' 6" x 7' 0"
Bedroom 2	3950 x 2950 mm
	12' 11" x 9' 8"
Bedroom 3	3950 x 2950 mm
	12' 11" x 9' 8"
Bedroom 4	3150 x 2930 mm
	10' 4" x 9' 7"
Bathroom	2400 x 2150 mm
	7' 10" x 7' 0"



www.broadgatehomes.com

This image is from an imaginary viewpoint within an open space area. Its purpose is to give a feel for the development, not an accurate description of an individual property. It shows a typical Broadgate home of this type, but external materials and landscaping may vary throughout the development and from site to site. Certain windows are subject to plot position on site. Properties may also be built handed (mirror image).

The floor plans depict a typical layout of this housetype. All dimensions are + or - 50mm and floor plans are not shown to scale. For exact plot specification, details of external and internal finishes, dimensions and floor plan differences always consult your Sales Negotiator. RN16/1582/Bu

