



Cambridge

FOUR BEDROOM HOME



 REDROW



Cambridge

FOUR BEDROOM HOME



 REDROW



Cambridge

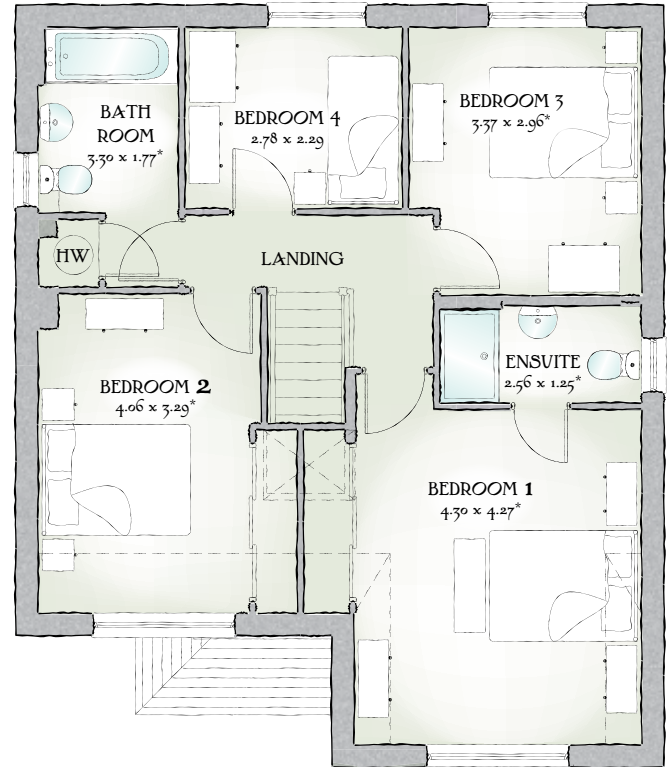
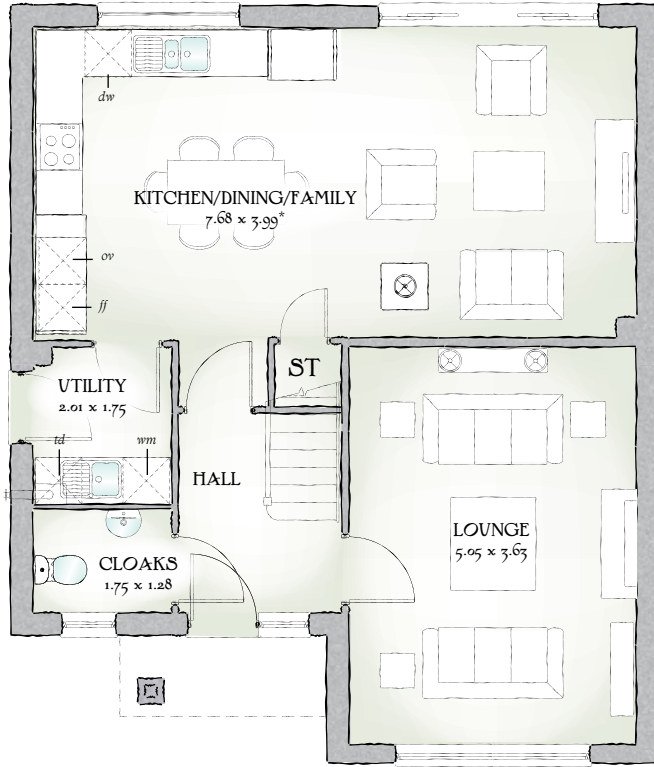
FOUR BEDROOM HOME



 REDROW



Cambridge



ASHDOWN VALE | 1382 SQ FT | FOUR BEDROOM HOME

It's clear from the first glance that The Cambridge has been designed for the dynamics of family life, by an architect who understands the fine balance between time together and personal space.

GROUND FLOOR

Lounge	16'7" x 11'11"	5.05 x 3.63 m
Kitchen/ Dining/ Family	25'2" x 13'1"	7.68 x 3.99 m*
Utility	6'7" x 5'9"	2.01 x 1.75 m
Cloaks	5'9" x 4'2"	1.75 x 1.28 m

FIRST FLOOR

Bedroom 1	14'1" x 14'0"	4.30 x 4.27 m*
En-suite	8'5" x 4'1"	2.56 x 1.25 m*
Bedroom 2	13'4" x 10'10"	4.06 x 3.29 m*
Bedroom 3	11'1" x 9'9"	3.37 x 2.96 m*
Bedroom 4	9'1" x 7'6"	2.78 x 2.29 m
Bathroom	10'10" x 5'10"	3.30 x 1.77 m*

Customers should note this illustration is an example of The Cambridge house type. All dimensions indicated are approximate and the furniture layout is for illustrative purposes only. Homes may be 'handed' (mirror image) versions of the illustrations, and may be detached, semi-detached or terraced. Materials used may differ from plot to plot including render and roof tile colours. Detailed plans and specifications are available for inspection for each plot at our Sales Centre during working hours and customers must check their individual specifications prior to making a reservation.

KEY Hob Oven Fridge/freezer Washing machine space Dishwasher space Tumble dryer space Hot Water Cylinder
* Max dimensions Note: Bedroom dimensions taken into wardrobe recess. All wardrobes are subject to site specification. Please see Sales Consultant for further details.

Traditional homes, built the way you remember

