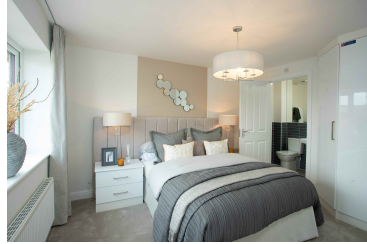


The Bluebells Specification Details



Kitchens

- ◆ Luxury Fitted Kitchen with Choice of Finishes
- ◆ Choice of Worktops to Kitchen and Utility with Matching Upstands
- ◆ Stainless Steel AEG Double Electric Oven, 5 Ring Gas Hob with Glass Splashback and Extractor Hood
- ◆ Integrated Dishwasher
- ◆ Integrated Fridge Freezer
- ◆ Inset Stainless Steel Sink with Hansgrohe Mixer
- ◆ Stainless Steel Sockets & Switches including Open Plan Areas (where applicable)
- ◆ LED Pelmet Lighting to Wall Units
- ◆ Downlights to Kitchen Area Only

Bathroom & En-suite

- ◆ Roca Victoria Plus/Debba Sanitaryware in White
- ◆ Hansgrohe Taps
- ◆ Thermostatic Hansgrohe 'Tablet' Showers, Bath/Shower Mixers
- ◆ Half Tiled with a Choice of Wall Tiles from Wainhomes Tileflair Range
- ◆ Full Height Tiling to all Shower Enclosures
- ◆ Shaver Sockets as standard
- ◆ Chrome Heated Towel Rails as standard
- ◆ Downlights as standard

Bedrooms

- ◆ Television Aerial Point to Master Bedroom
- ◆ Telephone Point to Master Bedroom
- ◆ Data Point with CAT 6 Wiring to Master Bedroom

Heating System

- ◆ Gas Central Heating with High Efficiency Boiler and Radiators
- ◆ Honeywell "Smart" Thermostats

Other Internal Features

- ◆ Ceilings Painted White
- ◆ Walls Painted in Wainhomes Soft Cream
- ◆ White Stop Chamfered Newel Posts and Spindles
- ◆ Oak Handrail and Oak Flat Top Newel Caps
- ◆ Satin Nickel Internal Door Furniture
- ◆ Television Aerial Point to Lounge
- ◆ Telephone Point to Lounge
- ◆ Data Points with CAT 6 Wiring to Lounge and Family Room (where applicable)
- ◆ Fibre to the Premises
- ◆ USB Sockets to Lounge, Kitchen, Family Room, all Bedrooms and Study (where applicable)
- ◆ Vertical 5 Panel Internal Doors Painted White
- ◆ Smoke Detectors
- ◆ Fitted Security Alarm

External Features

- ◆ PVCu Windows and French Doors/Bifold Doors (plot specific, please see Sales Executive)
- ◆ GRP Composite Front and Rear Doors
- ◆ Black Rainwater Goods
- ◆ External Lights to Front and Rear
- ◆ Power and Lighting to all Integral and Detached Garages (within the Plot Curtilage)
- ◆ External Tap
- ◆ Turf and Planting to the Front Garden
- ◆ Rotavated Rear Garden
- ◆ 1.8m Close Boarded/Panel Divisional Fencing to Rear Garden

Warranties

- ◆ 10 Year NHBC Buildmark Warranty
- ◆ 2 Year Wainhomes Warranty

Wainhomes Policy is continuous product and specification development. Images shown are for illustrative purposes only. Every effort has been made to ensure the accuracy of the information provided in this leaflet at the date of publication but it may be subject to change without notice. Specification choices are subject to build stage. Please consult with our Sales Executive to obtain the current specification or the specification of any particular plot. You should take appropriate steps to verify any information upon which you wish to rely. These particulars are intended for guidance only and their accuracy is not guaranteed. They do not constitute a contract, part of a contract or warranty. (February 2021)



Our Symbol of Quality and Value