


Wain
HOMES



A place that lets you be you.
That says everything about you.
That feels good, feels right.
Where life can be beautifully imperfect.
And you love every moment of it.

YOUR KIND OF *perfect*

LARK VIEW DEVELOPMENT PLAN



2 Bedroom Apartments

- Buttercup House
- Tamarind

2 Bedroom Homes

- The Mellyon (MEL)
- The Oysterwood (OYW)

3 Bedroom Homes

- The Acacia (ACA)
- The Acer (ACE)
- The Alder (ALD)
- The Laurel (LAU)
- The Whiteberry (WBV)

4 Bedroom Homes

- The Foxglove (FXG)
- The Hawthorn (HAW)
- The Hazel (HAZ)
- The Holly (HOL)
- The Juniper (JUN)

Affordable Homes

- Shared Ownership
- * Affordable Rented Homes

(Location of affordable / rented homes is indicative)

- S/S Substation
- P/S Pump Station
- LEAP Local Equipment Area for Play
- B/S Bike/Bin Store



Wain Homes abides by the New Homes Quality Code, an independent industry code introduced to champion quality new homes and better consumer outcomes. Dimensions shown are internal finished dimensions which may vary as each home is built individually and the precise internal finishes may not always be the same. Please be aware that window and door positions could vary due to plot orientation. It is essential to view the working drawings with our Sales Executive for plot specific detail. Enquire for further information. Wain Homes Policy is continuous product and specification development. Every effort has been made to ensure the accuracy of the information provided in this leaflet at the date of publication but it may be subject to change without notice. Please consult with our Sales Executive to obtain the current specification. You should take appropriate steps to verify any information upon which you wish to rely. The sizes indicated are not intended to be used for carpet sizes, appliance spaces or items of furniture. Elevational treatments may vary to those shown. These particulars are intended for guidance only and their accuracy is not guaranteed. They do not constitute a contract, part of a contract or warranty. (February 2026)



LARK VIEW SPECIFICATION

BUTTERCUP HOUSE | TAMARIND HOUSE | THE MELLYON | THE OYSTERWOOD | THE ACACIA
THE ACER | THE ALDER | THE LAUREL | THE WHITEBERRY | THE FOXGLOVE | THE HAWTHORN
THE HAZEL | THE HOLLY | THE JUNIPER

KITCHENS

- Glass Splashback
- Stainless Steel Electric Oven and Gas Hob, Extractor over (as per plot specific working drawing)
- Worktop and Upstand
- Soft Closer Drawers and Hinges
- Downlighters
- Under Unit Lighting
- All Appliances as per Kitchen Layout
- USB Charger Socket
- Stainless Steel Sink with
- Chrome Mixer Tap

BATHROOMS

- Contemporary White Sanitary Ware
- Chrome Bath Pillar Tap
- Shaver Socket to Bathroom and En-Suite
- Chrome Heated Towel Rail to Bathroom and En-Suite
- Downlighters to En-Suites

WALL TILING

Cloaks

- Wall Tiling to Splashback only in Cloaks

Bathroom

- Half Height Tiling throughout
- Full Height to Shower Cubicle
- Full Height Tiling around Bath if Shower over Bath
- Tiled Window Cills where applicable

En-Suites

- Full-Height Tiling to Shower Cubicle and
- Half-Height to all Other Walls
- Tiled Window Cills where applicable

HEATING SYSTEM

- Gas Central Heating to all Properties

INTERNAL FEATURES

- Staircase White, Oak Handrail
- Switches and Sockets White to all Rooms
- Wain Home Cream Painted Walls
- BT and TV points Lounge and Bedroom 1
- Data Point Bedroom 1
- Vertical Grooved Oak Finish Internal Doors with Chrome Ironmongery
- Smoke Detectors
- Pencil Round Skirting Boards and Architraves
- Flat Finish Ceilings to all Rooms in White Matt

EXTERNAL FEATURES

- UPVC Fascia and Soffit Boards
- PVCu Double Glazed to all Windows (except Garage) to Suit External Elevations
- French Doors and Paved Patio where applicable
- GRP Front/Rear Doors
- Electric Front Door Bell
- 1.8m Palisade Fencing
- Division Fencing 1.8m Palisade
- External Lights to be fitted Front and Rear Elevations, Energy Efficient Fittings
- Paving Slab Paths to serve Front and Side Entrances as per the External Working Drawings
- UPVC Rainwater Goods
- External Tap
- PV Panels on specific plots only

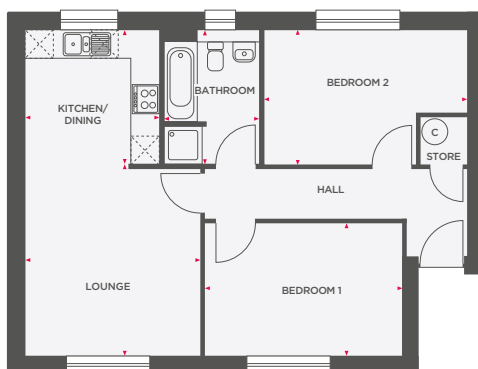
WARRANTIES

- 10-Year NHBC Buildmark Warranty
- 2-Year Wain Homes Warranty

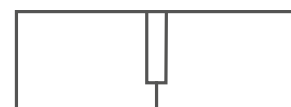


BUTTERCUP HOUSE

THE PRIMROSE - 2 BEDROOM APARTMENT



Lounge	3720 x 4040	12'2" x 13'3"
Kitchen/Dining	2845 x 2845	9'4" x 9'4"
Bedroom 1	4175 x 2810	13'8" x 9'3"
Bedroom 2	4305 x 2845	14'1" x 9'4"
Bathroom	2025 x 2845	6'8" x 9'4"



FIRST FLOOR



GROUND FLOOR

Space for appliance Hot water cylinder



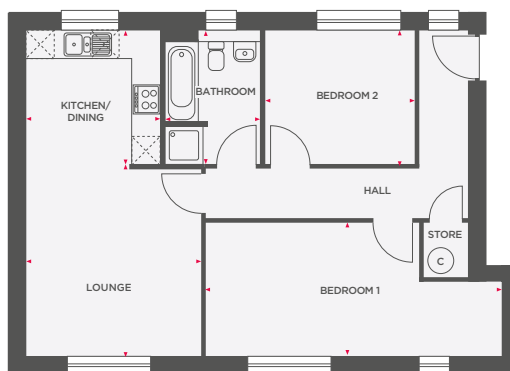
Wain Homes abides by the New Homes Quality Code, an independent industry code introduced to champion quality new homes and better consumer outcomes. Dimensions shown are internal finished dimensions which may vary as each home is built individually and the precise internal finishes may not always be the same. Please be aware that window and door positions could vary due to plot orientation. It is essential to view the working drawings with our Sales Executive for plot specific detail. Enquire for further information. Wain Homes Policy is continuous product and specification development. Every effort has been made to ensure the accuracy of the information provided in this leaflet at the date of publication but it may be subject to change without notice. Please consult with our Sales Executive to obtain the current specification. You should take appropriate steps to verify any information upon which you wish to rely. The sizes indicated are not intended to be used for carpet sizes, appliance spaces or items of furniture. Elevational treatments may vary to those shown. These particulars are intended for guidance only and their accuracy is not guaranteed. They do not constitute a contract, part of a contract or warranty. (February 2026)



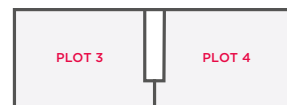


BUTTERCUP HOUSE

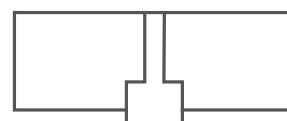
THE GORSE - 2 BEDROOM APARTMENT



Lounge	3720 x 4040	12'2" x 13'3"
Kitchen/Dining	2845 x 2845	9'4" x 9'4"
Bedroom 1	4485 x 2800	14'9" x 9'2"
Bedroom 2	3135 x 2845	10'3" x 9'4"
Bathroom	2025 x 2845	6'8" x 9'4"



FIRST FLOOR



GROUND FLOOR

Space for appliance © Hot water cylinder



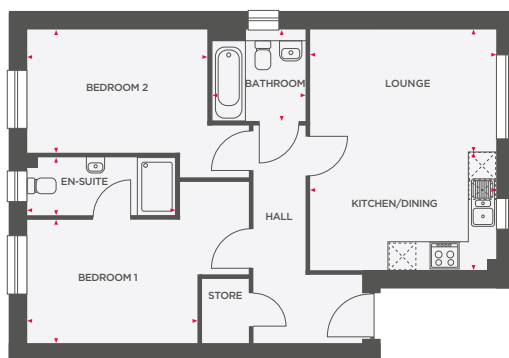
Wain Homes abides by the New Homes Quality Code, an independent industry code introduced to champion quality new homes and better consumer outcomes. Dimensions shown are internal finished dimensions which may vary as each home is built individually and the precise internal finishes may not always be the same. Please be aware that window and door positions could vary due to plot orientation. It is essential to view the working drawings with our Sales Executive for plot specific detail. Enquire for further information. Wain Homes Policy is continuous product and specification development. Every effort has been made to ensure the accuracy of the information provided in this leaflet at the date of publication but it may be subject to change without notice. Please consult with our Sales Executive to obtain the current specification. You should take appropriate steps to verify any information upon which you wish to rely. The sizes indicated are not intended to be used for carpet sizes, appliance spaces or items of furniture. Elevational treatments may vary to those shown. These particulars are intended for guidance only and their accuracy is not guaranteed. They do not constitute a contract, part of a contract or warranty. (February 2026)



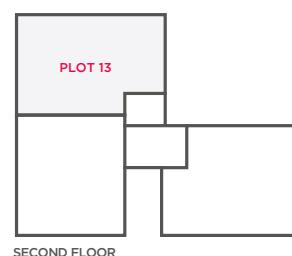


TAMARIND HOUSE

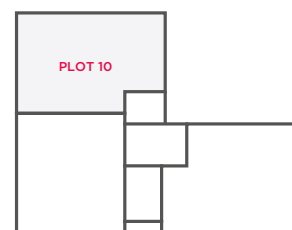
THE MYRTLE - 2 BEDROOM APARTMENT



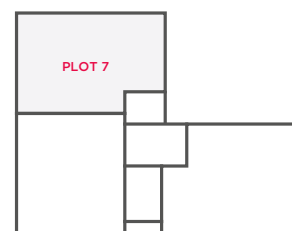
Lounge	3945 x 2590	12'11" x 8'6"
Kitchen/Dining	3945 x 2500	12'11" x 8'2"
Bedroom 1	3595 x 2600	11'9" x 8'7"
En-Suite	3150 x 1210	10'4" x 3'11"
Bedroom 2	3810 x 2610	12'6" x 8'7"
Bathroom	1995 x 1930	6'7" x 6'4"



SECOND FLOOR



FIRST FLOOR



GROUND FLOOR

Space for appliance © Hot water cylinder



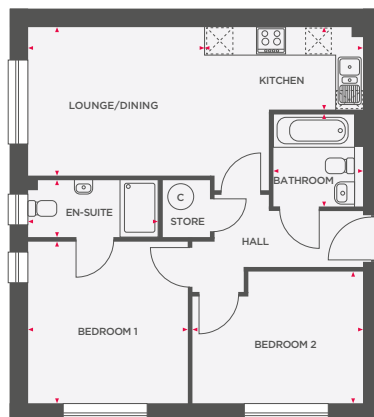
Wain Homes abides by the New Homes Quality Code, an independent industry code introduced to champion quality new homes and better consumer outcomes. Dimensions shown are internal finished dimensions which may vary as each home is built individually and the precise internal finishes may not always be the same. Please be aware that window and door positions could vary due to plot orientation. It is essential to view the working drawings with our Sales Executive for plot specific detail. Enquire for further information. Wain Homes Policy is continuous product and specification development. Every effort has been made to ensure the accuracy of the information provided in this leaflet at the date of publication but it may be subject to change without notice. Please consult with our Sales Executive to obtain the current specification. You should take appropriate steps to verify any information upon which you wish to rely. The sizes indicated are not intended to be used for carpet sizes, appliance spaces or items of furniture. Elevational treatments may vary to those shown. These particulars are intended for guidance only and their accuracy is not guaranteed. They do not constitute a contract, part of a contract or warranty. (February 2026)



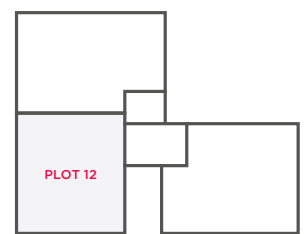


TAMARIND HOUSE

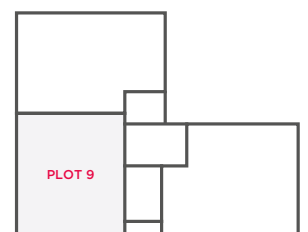
THE CAMELLIA - 2 BEDROOM APARTMENT



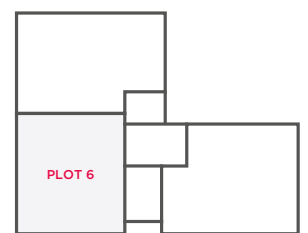
Lounge	3740 x 3150	12'3" x 10'4"
Kitchen/Dining	3360 x 3150	11'0" x 10'4"
Bedroom 1	3370 x 3455	11'1" x 11'4"
En-Suite	2750 x 1210	9'0" x 3'11"
Bedroom 2	3640 x 2830	11'11" x 9'3"
Bathroom	1920 x 1975	6'4" x 6'6"



SECOND FLOOR



FIRST FLOOR



GROUND FLOOR

Space for appliance © Hot water cylinder



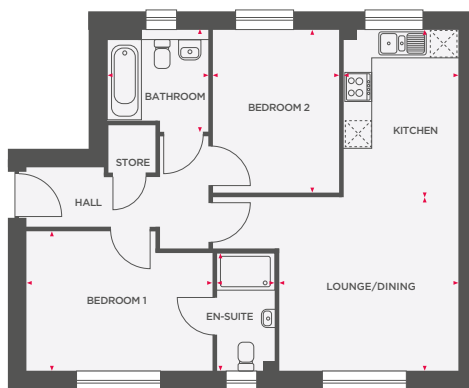
Wain Homes abides by the New Homes Quality Code, an independent industry code introduced to champion quality new homes and better consumer outcomes. Dimensions shown are internal finished dimensions which may vary as each home is built individually and the precise internal finishes may not always be the same. Please be aware that window and door positions could vary due to plot orientation. It is essential to view the working drawings with our Sales Executive for plot specific detail. Enquire for further information. Wain Homes Policy is continuous product and specification development. Every effort has been made to ensure the accuracy of the information provided in this leaflet at the date of publication but it may be subject to change without notice. Please consult with our Sales Executive to obtain the current specification. You should take appropriate steps to verify any information upon which you wish to rely. The sizes indicated are not intended to be used for carpet sizes, appliance spaces or items of furniture. Elevational treatments may vary to those shown. These particulars are intended for guidance only and their accuracy is not guaranteed. They do not constitute a contract, part of a contract or warranty. (February 2026)



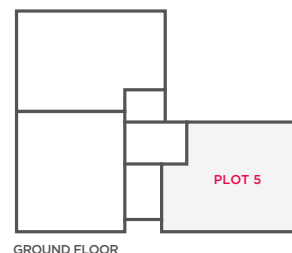
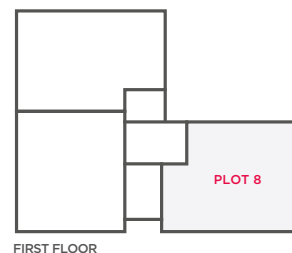
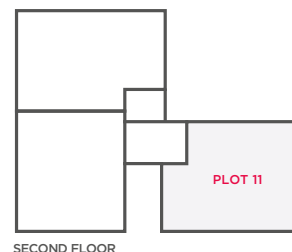


TAMARIND HOUSE

THE HEATHER - 2 BEDROOM APARTMENT



Lounge/Dining	3790 x 3695	12'5" x 12'1"
Kitchen	2420 x 3530	7'11" x 11'7"
Bedroom 1	3940 x 2960	12'11" x 9'9"
En-Suite	2515 x 1210	8'3" x 3'11"
Bedroom 2	2675 x 3435	8'9" x 11'3"
Bathroom	2115 x 2170	6'11" x 7'1"



Space for appliance © Hot water cylinder



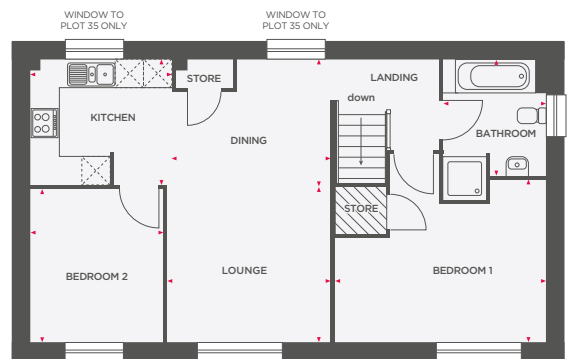
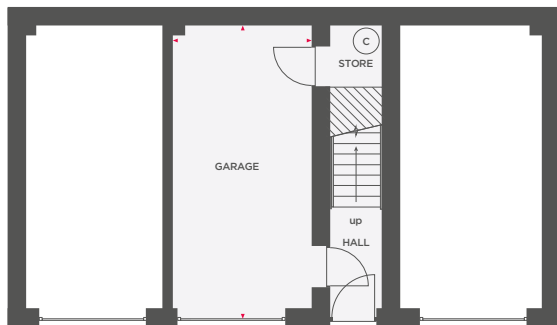
Wain Homes abides by the New Homes Quality Code, an independent industry code introduced to champion quality new homes and better consumer outcomes. Dimensions shown are internal finished dimensions which may vary as each home is built individually and the precise internal finishes may not always be the same. Please be aware that window and door positions could vary due to plot orientation. It is essential to view the working drawings with our Sales Executive for plot specific detail. Enquire for further information. Wain Homes Policy is continuous product and specification development. Every effort has been made to ensure the accuracy of the information provided in this leaflet at the date of publication but it may be subject to change without notice. Please consult with our Sales Executive to obtain the current specification. You should take appropriate steps to verify any information upon which you wish to rely. The sizes indicated are not intended to be used for carpet sizes, appliance spaces or items of furniture. Elevational treatments may vary to those shown. These particulars are intended for guidance only and their accuracy is not guaranteed. They do not constitute a contract, part of a contract or warranty. (February 2026)





THE MELLYON

2 BEDROOM HOME



Garage 2970 x 6035 9'9" x 19'10"

Lounge	3460 x 3330	11'4" x 10'11"
Kitchen	2655 x 2915	8'9" x 9'7"
Dining	3460 x 2655	11'4" x 8'9"
Bedroom 1	4460 x 3445	14'8" x 11'4"
Bedroom 2	3245 x 2830	10'8" x 9'3"
Bathroom	2455 x 2165	8'1" x 7'1"

Space for appliance © Hot water cylinder Limited use area



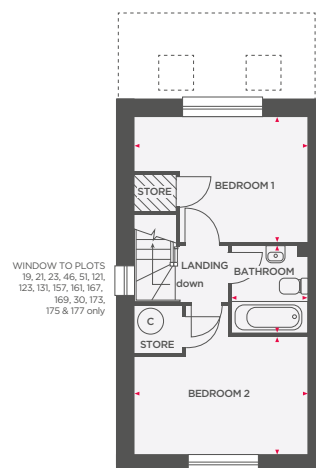
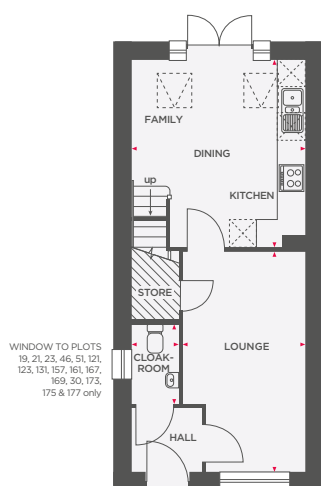
Wain Homes abides by the New Homes Quality Code, an independent industry code introduced to champion quality new homes and better consumer outcomes. Dimensions shown are internal finished dimensions which may vary as each home is built individually and the precise internal finishes may not always be the same. Please be aware that window and door positions could vary due to plot orientation. It is essential to view the working drawings with our Sales Executive for plot specific detail. Enquire for further information. Wain Homes Policy is continuous product and specification development. Every effort has been made to ensure the accuracy of the information provided in this leaflet at the date of publication but it may be subject to change without notice. Please consult with our Sales Executive to obtain the current specification. You should take appropriate steps to verify any information upon which you wish to rely. The sizes indicated are not intended to be used for carpet sizes, appliance spaces or items of furniture. Elevational treatments may vary to those shown. These particulars are intended for guidance only and their accuracy is not guaranteed. They do not constitute a contract, part of a contract or warranty. (February 2026)





THE OYSTERWOOD

2 BEDROOM SEMI-DETACHED/TERRACED HOME



Lounge	2735 x 4965	9'0" x 16'3"
Kitchen/Dining/Family	3885 x 4195	12'9" x 13'9"
Cloakroom	1780 x 1050	5'10" x 3'5"

Bedroom 1	2825 x 3885	9'3" x 12'9"
Bedroom 2	2625 x 3885	8'7" x 12'9"
Bathroom	1720 x 1925	5'8" x 6'4"

Space for appliance © Hot water cylinder Limited use area



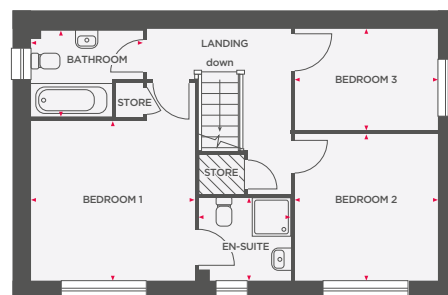
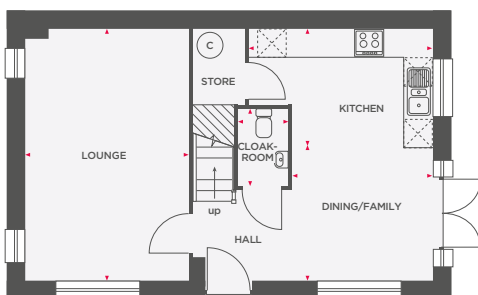
Wain Homes abides by the New Homes Quality Code, an independent industry code introduced to champion quality new homes and better consumer outcomes. Dimensions shown are internal finished dimensions which may vary as each home is built individually and the precise internal finishes may not always be the same. Please be aware that window and door positions could vary due to plot orientation. It is essential to view the working drawings with our Sales Executive for plot specific detail. Enquire for further information. Wain Homes Policy is continuous product and specification development. Every effort has been made to ensure the accuracy of the information provided in this leaflet at the date of publication but it may be subject to change without notice. Please consult with our Sales Executive to obtain the current specification. You should take appropriate steps to verify any information upon which you wish to rely. The sizes indicated are not intended to be used for carpet sizes, appliance spaces or items of furniture. Elevational treatments may vary to those shown. These particulars are intended for guidance only and their accuracy is not guaranteed. They do not constitute a contract, part of a contract or warranty. (February 2026)





THE ACACIA

3 BEDROOM DETACHED/END TERRACED HOME



Lounge	5305 x 3445	17'5" x 11'4"
Kitchen	3885 x 2500	12'9" x 8'2"
Dining/Family	2950 x 2805	9'8" x 9'2"
Cloakroom	1625 x 1050	5'4" x 3'5"

Bedroom 1	3445 x 3355	11'4" x 11'0"
En-Suite	1925 x 1730	6'4" x 5'8"
Bedroom 2	3075 x 3005	10'1" x 9'10"
Bedroom 3	3030 x 2140	9'11" x 7'0"
Bathroom	2360 x 1810	7'9" x 5'11"

Space for appliance
 Hot water cylinder
 Limited use area



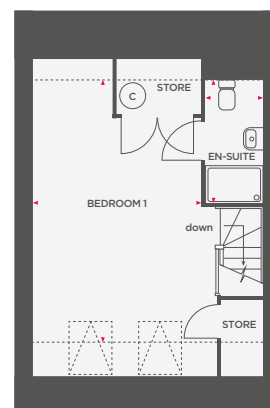
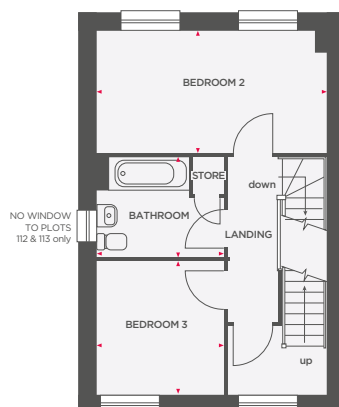
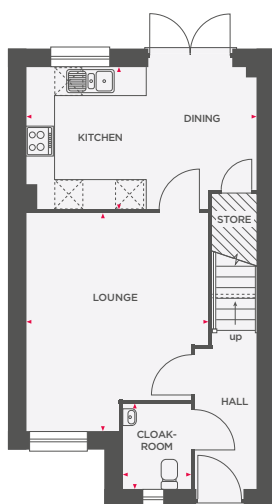
Wain Homes abides by the New Homes Quality Code, an independent industry code introduced to champion quality new homes and better consumer outcomes. Dimensions shown are internal finished dimensions which may vary as each home is built individually and the precise internal finishes may not always be the same. Please be aware that window and door positions could vary due to plot orientation. It is essential to view the working drawings with our Sales Executive for plot specific detail. Enquire for further information. Wain Homes Policy is continuous product and specification development. Every effort has been made to ensure the accuracy of the information provided in this leaflet at the date of publication but it may be subject to change without notice. Please consult with our Sales Executive to obtain the current specification. You should take appropriate steps to verify any information upon which you wish to rely. The sizes indicated are not intended to be used for carpet sizes, appliance spaces or items of furniture. Elevational treatments may vary to those shown. These particulars are intended for guidance only and their accuracy is not guaranteed. They do not constitute a contract, part of a contract or warranty. (February 2026)





THE ACER

3 BEDROOM SEMI-DETACHED HOME



Lounge	4610 x 3815	15'2" x 12'6"
Kitchen/Dining	4835 x 2975	15'10" x 9'9"
Cloakroom	1800 x 1430	5'11" x 4'8"

Bedroom 2	4835 x 2565	15'10" x 8'5"
Bedroom 3	2805 x 2670	9'2" x 8'9"
Bathroom	2670 x 2125	8'9" x 7'0"

Bedroom 1	5565 x 3935	18'3" x 12'11"
En-Suite	2595 x 1200	8'6" x 3'11"

Space for appliance
 Hot water cylinder
 ----- 1500mm height line
 Limited use area



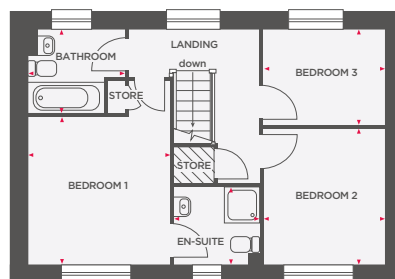
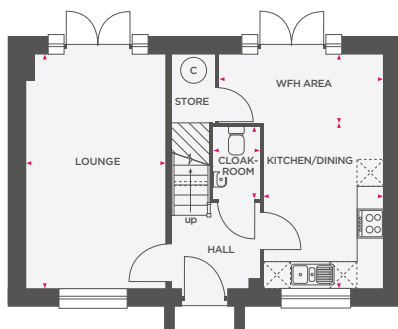
Wain Homes abides by the New Homes Quality Code, an independent industry code introduced to champion quality new homes and better consumer outcomes. Dimensions shown are internal finished dimensions which may vary as each home is built individually and the precise internal finishes may not always be the same. Please be aware that window and door positions could vary due to plot orientation. It is essential to view the working drawings with our Sales Executive for plot specific detail. Enquire for further information. Wain Homes Policy is continuous product and specification development. Every effort has been made to ensure the accuracy of the information provided in this leaflet at the date of publication but it may be subject to change without notice. Please consult with our Sales Executive to obtain the current specification. You should take appropriate steps to verify any information upon which you wish to rely. The sizes indicated are not intended to be used for carpet sizes, appliance spaces or items of furniture. Elevational treatments may vary to those shown. These particulars are intended for guidance only and their accuracy is not guaranteed. They do not constitute a contract, part of a contract or warranty. (February 2026)





THE ALDER

3 BEDROOM DETACHED HOME



Lounge	3155 x 5310	10'4" x 17'5"
Kitchen/Dining	2725 x 3765	8'11" x 12'4"
WFH Area	1545 x 3725	5'1" x 12'3"
Cloakroom	1650 x 1050	5'5" x 3'5"

Bedroom 1	3220 x 3330	10'7" x 10'11"
En-Suite	1925 x 1730	6'4" x 5'8"
Bedroom 2	2780 x 3075	9'1" x 10'1"
Bedroom 3	2780 x 2145	9'1" x 7'0"
Bathroom	2180 x 1890	7'2" x 6'2"

Space for appliance
 Hot water cylinder
 Limited use area



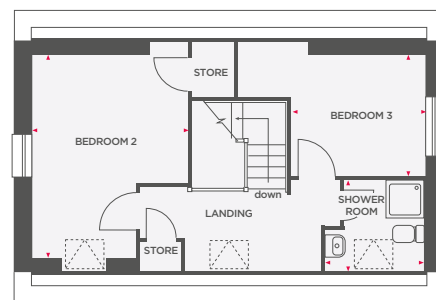
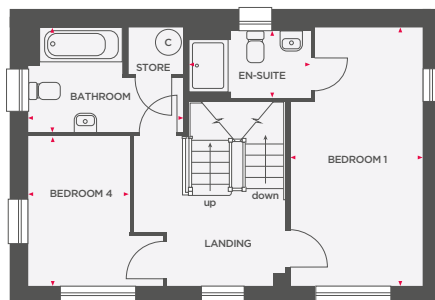
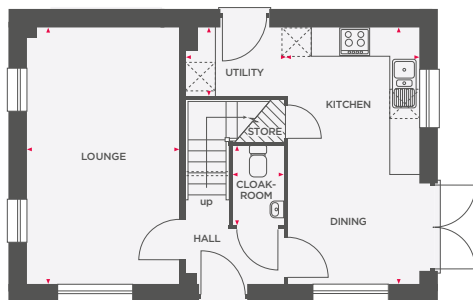
Wain Homes abides by the New Homes Quality Code, an independent industry code introduced to champion quality new homes and better consumer outcomes. Dimensions shown are internal finished dimensions which may vary as each home is built individually and the precise internal finishes may not always be the same. Please be aware that window and door positions could vary due to plot orientation. It is essential to view the working drawings with our Sales Executive for plot specific detail. Enquire for further information. Wain Homes Policy is continuous product and specification development. Every effort has been made to ensure the accuracy of the information provided in this leaflet at the date of publication but it may be subject to change without notice. Please consult with our Sales Executive to obtain the current specification. You should take appropriate steps to verify any information upon which you wish to rely. The sizes indicated are not intended to be used for carpet sizes, appliance spaces or items of furniture. Elevational treatments may vary to those shown. These particulars are intended for guidance only and their accuracy is not guaranteed. They do not constitute a contract, part of a contract or warranty. (February 2026)

Wain
HOMES



THE HOLLY




4 BEDROOM DETACHED HOME



Lounge	3155 x 5310	10'4" x 17'5"
Kitchen/Dining	2715 x 5310	8'11" x 17'5"
Utility	2100 x 1420	6'11" x 4'8"
Cloakroom	1650 x 1050	5'5" x 3'5"

Bedroom 1	2750 x 5310	9'0" x 17'5"
Bedroom 4	2070 x 3060	6'9" x 10'0"
Bathroom	2160 x 3195	7'1" x 10'6"
En-Suite	1370 x 2500	4'6" x 8'2"

Bedroom 2	3220 x 4210	10'6" x 13'9"
Bedroom 3	2750 x 2510	9'0" x 8'2"
Shower Room	1885 x 2050	6'2" x 6'9"

 Space for appliance
  Hot water cylinder
  Limited use area



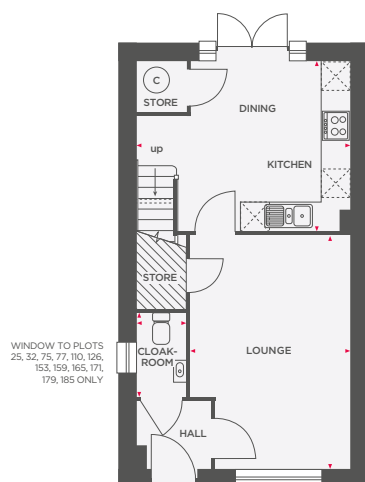
Wain Homes abides by the New Homes Quality Code, an independent industry code introduced to champion quality new homes and better consumer outcomes. Dimensions shown are internal finished dimensions which may vary as each home is built individually and the precise internal finishes may not always be the same. Please be aware that window and door positions could vary due to plot orientation. It is essential to view the working drawings with our Sales Executive for plot specific detail. Enquire for further information. Wain Homes Policy is continuous product and specification development. Every effort has been made to ensure the accuracy of the information provided in this leaflet at the date of publication but it may be subject to change without notice. Please consult with our Sales Executive to obtain the current specification. You should take appropriate steps to verify any information upon which you wish to rely. The sizes indicated are not intended to be used for carpet sizes, appliance spaces or items of furniture. Elevational treatments may vary to those shown. These particulars are intended for guidance only and their accuracy is not guaranteed. They do not constitute a contract, part of a contract or warranty. (February 2026)

Wain
HOMES

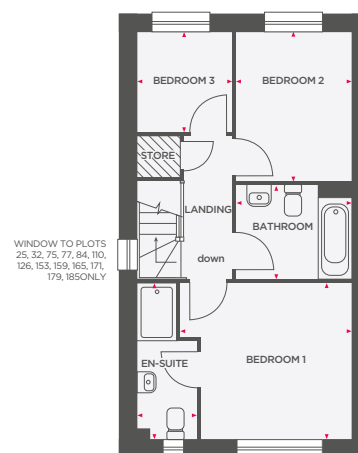


THE LAUREL

3 BEDROOM SEMI-DETACHED/TERRACED HOME



Lounge	4930 x 3360	16'2" x 11'0"
Kitchen/Dining	3555 x 3350	11'8" x 11'0"
Cloakroom	1750 x 1040	5'9" x 3'5"



Bedroom 1	3300 x 3165	10'10" x 10'5"
En-Suite	3300 x 1260	10'10" x 4'2"
Bedroom 2	3145 x 2435	10'4" x 8'0"
Bedroom 3	2095 x 1975	6'11" x 6'6"
Bathroom	2435 x 1955	8'0" x 6'5"

Space for appliance
 Hot water cylinder
 Limited use area



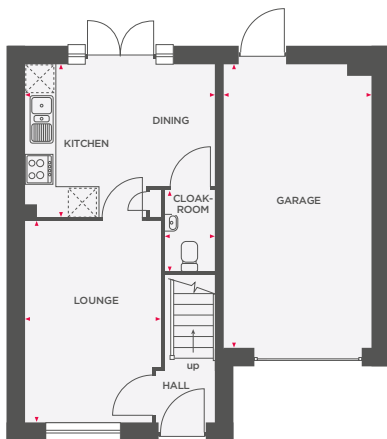
Wain Homes abides by the New Homes Quality Code, an independent industry code introduced to champion quality new homes and better consumer outcomes. Dimensions shown are internal finished dimensions which may vary as each home is built individually and the precise internal finishes may not always be the same. Please be aware that window and door positions could vary due to plot orientation. It is essential to view the working drawings with our Sales Executive for plot specific detail. Enquire for further information. Wain Homes Policy is continuous product and specification development. Every effort has been made to ensure the accuracy of the information provided in this leaflet at the date of publication but it may be subject to change without notice. Please consult with our Sales Executive to obtain the current specification. You should take appropriate steps to verify any information upon which you wish to rely. The sizes indicated are not intended to be used for carpet sizes, appliance spaces or items of furniture. Elevational treatments may vary to those shown. These particulars are intended for guidance only and their accuracy is not guaranteed. They do not constitute a contract, part of a contract or warranty. (February 2026)



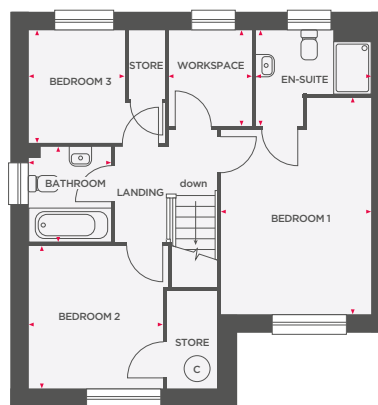


THE WHITEBERRY

3 BEDROOM DETACHED HOME



Lounge	4250 x 2820	13'11" x 9'3"
Kitchen/Dining	3960 x 3200	10'6" x 13'0"
Garage	6035 x 3055	19'10" x 10'0"
Cloakroom	1715 x 1050	5'8" x 3'5"



Bedroom 1	4585 x 3175	15'0" x 10'5"
En-Suite	2435 x 1990	8'0" x 6'6"
Bedroom 2	3005 x 2820	9'10" x 9'3"
Bedroom 3	2355 x 2020	7'9" x 6'8"
Workspace	1990 x 1745	6'6" x 5'9"
Bathroom	2000 x 1715	6'7" x 5'8"

 Space for appliance  Hot water cylinder



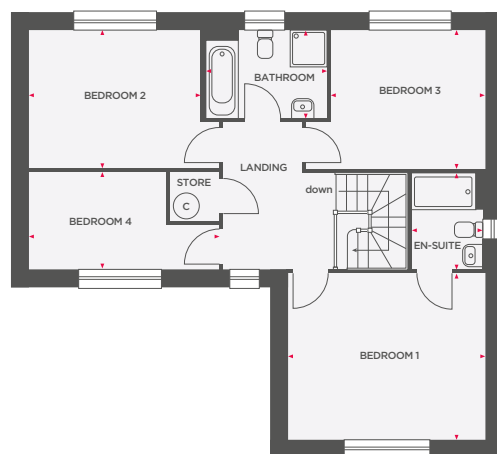
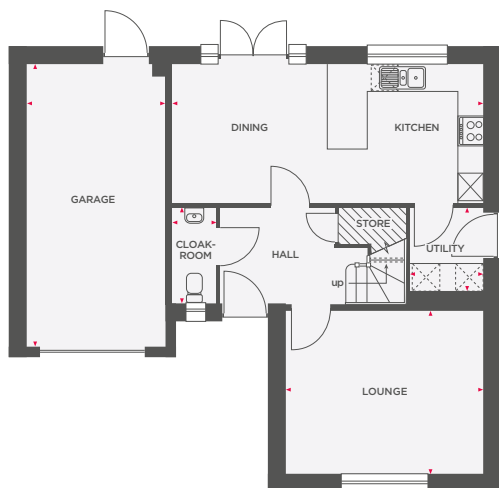
Wain Homes abides by the New Homes Quality Code, an independent industry code introduced to champion quality new homes and better consumer outcomes. Dimensions shown are internal finished dimensions which may vary as each home is built individually and the precise internal finishes may not always be the same. Please be aware that window and door positions could vary due to plot orientation. It is essential to view the working drawings with our Sales Executive for plot specific detail. Enquire for further information. Wain Homes Policy is continuous product and specification development. Every effort has been made to ensure the accuracy of the information provided in this leaflet at the date of publication but it may be subject to change without notice. Please consult with our Sales Executive to obtain the current specification. You should take appropriate steps to verify any information upon which you wish to rely. The sizes indicated are not intended to be used for carpet sizes, appliance spaces or items of furniture. Elevational treatments may vary to those shown. These particulars are intended for guidance only and their accuracy is not guaranteed. They do not constitute a contract, part of a contract or warranty. (February 2026)





THE FOXGLOVE

4 BEDROOM DETACHED HOME



Lounge	4295 x 3560	14'1" x 11'8"
Kitchen/Dining	6775 x 3015	22'3" x 9'11"
Cloakroom	2090 x 930	6'10" x 3'1"
Utility	1815 x 1600	5'11" x 5'3"
Garage	6170 x 2980	20'3" x 9'9"

Bedroom 1	4295 x 3605	14'1" x 11'10"
En-Suite	2085 x 1550	6'10" x 5'1"
Bedroom 2	3745 x 3015	12'3" x 9'10"
Bedroom 3	3345 x 2995	10'11" x 9'10"
Bedroom 4	4145 x 2095	13'7" x 6'10"
Bathroom	1925 x 2620	6'4" x 8'7"

Integrated appliance
 Space for appliance
 Hot water cylinder
 Limited use area



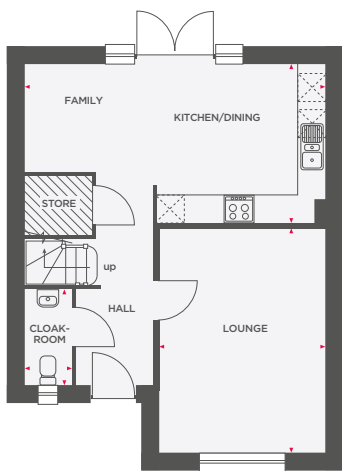
Wain Homes abides by the New Homes Quality Code, an independent industry code introduced to champion quality new homes and better consumer outcomes. Dimensions shown are internal finished dimensions which may vary as each home is built individually and the precise internal finishes may not always be the same. Please be aware that window and door positions could vary due to plot orientation. It is essential to view the working drawings with our Sales Executive for plot specific detail. Enquire for further information. Wain Homes Policy is continuous product and specification development. Every effort has been made to ensure the accuracy of the information provided in this leaflet at the date of publication but it may be subject to change without notice. Please consult with our Sales Executive to obtain the current specification. You should take appropriate steps to verify any information upon which you wish to rely. The sizes indicated are not intended to be used for carpet sizes, appliance spaces or items of furniture. Elevational treatments may vary to those shown. These particulars are intended for guidance only and their accuracy is not guaranteed. They do not constitute a contract, part of a contract or warranty. (February 2026)



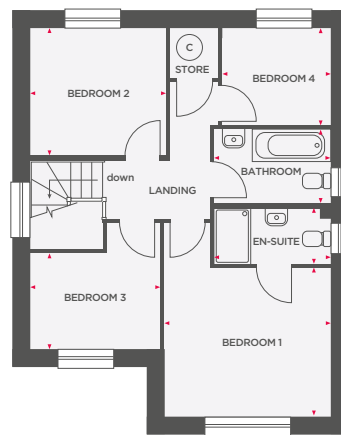


THE HAWTHORN

4 BEDROOM DETACHED HOME



Lounge	4880 x 3625	16'0" x 11'11"
Kitchen/Dining/Family	6550 x 3430	21'6" x 11'3"
Cloakroom	2075 x 1025	6'10" x 3'4"



Bedroom 1	3625 x 3255	11'11" x 10'8"
En-Suite	2540 x 1205	8'4" x 3'11"
Bedroom 2	2960 x 2785	9'8" x 9'2"
Bedroom 3	2840 x 2105	9'4" x 6'11"
Bedroom 4	2365 x 2100	7'9" x 6'11"
Bathroom	2540 x 1615	8'4" x 5'4"

Space for appliance
 Hot water cylinder
 Limited use area



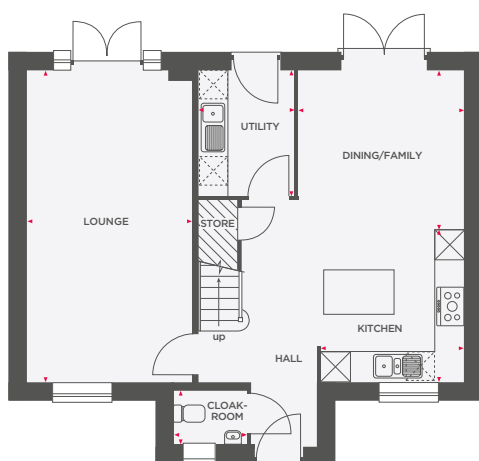
Wain Homes abides by the New Homes Quality Code, an independent industry code introduced to champion quality new homes and better consumer outcomes. Dimensions shown are internal finished dimensions which may vary as each home is built individually and the precise internal finishes may not always be the same. Please be aware that window and door positions could vary due to plot orientation. It is essential to view the working drawings with our Sales Executive for plot specific detail. Enquire for further information. Wain Homes Policy is continuous product and specification development. Every effort has been made to ensure the accuracy of the information provided in this leaflet at the date of publication but it may be subject to change without notice. Please consult with our Sales Executive to obtain the current specification. You should take appropriate steps to verify any information upon which you wish to rely. The sizes indicated are not intended to be used for carpet sizes, appliance spaces or items of furniture. Elevational treatments may vary to those shown. These particulars are intended for guidance only and their accuracy is not guaranteed. They do not constitute a contract, part of a contract or warranty. (February 2026)

Wain
HOMES

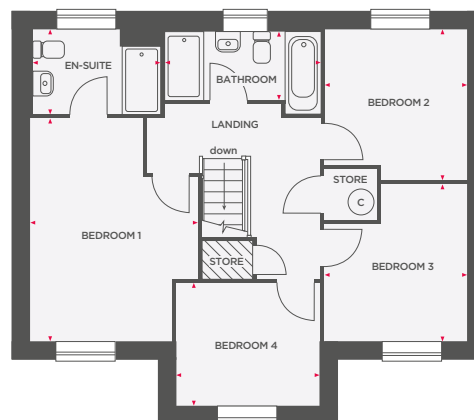


THE HAZEL

4 BEDROOM DETACHED HOME



Lounge	3405 x 6435	11'2" x 21'1"
Kitchen	2950 x 3125	9'8" x 10'3"
Dining/Family	3310 x 3410	10'10" x 11'2"
Utility	2595 x 1970	8'6" x 6'5"
Cloakroom	1500 x 1145	4'11" x 3'9"



Bedroom 1	3465 x 4595	11'5" x 15'1"
En-Suite	2645 x 1750	8'8" x 5'9"
Bedroom 2	2925 x 3130	9'7" x 10'3"
Bedroom 3	2950 x 3220	9'8" x 10'7"
Bedroom 4	2945 x 2540	9'8" x 8'4"
Bathroom	3200 x 1715	10'6" x 5'8"

Integrated appliance
 Space for appliance
 Hot water cylinder
 Limited use area



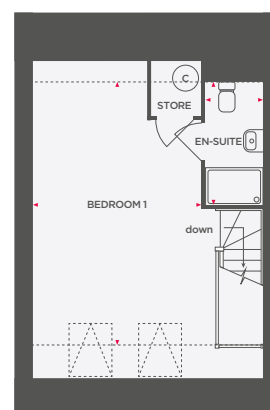
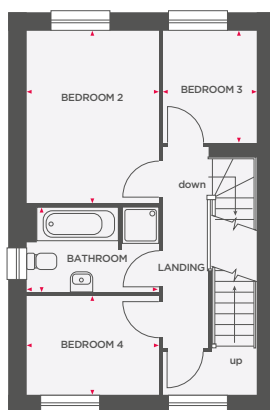
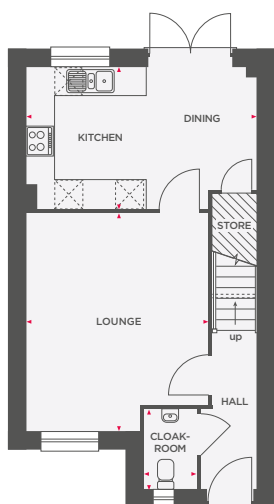
Wain Homes abides by the New Homes Quality Code, an independent industry code introduced to champion quality new homes and better consumer outcomes. Dimensions shown are internal finished dimensions which may vary as each home is built individually and the precise internal finishes may not always be the same. Please be aware that window and door positions could vary due to plot orientation. It is essential to view the working drawings with our Sales Executive for plot specific detail. Enquire for further information. Wain Homes Policy is continuous product and specification development. Every effort has been made to ensure the accuracy of the information provided in this leaflet at the date of publication but it may be subject to change without notice. Please consult with our Sales Executive to obtain the current specification. You should take appropriate steps to verify any information upon which you wish to rely. The sizes indicated are not intended to be used for carpet sizes, appliance spaces or items of furniture. Elevational treatments may vary to those shown. These particulars are intended for guidance only and their accuracy is not guaranteed. They do not constitute a contract, part of a contract or warranty. (February 2026)

Wain
HOMES



THE JUNIPER

4 BEDROOM SEMI-DETACHED HOME



Lounge	4610 x 3815	15'2" x 12'6"
Kitchen/Dining	4835 x 2975	15'10" x 9'9"
Cloakroom	1695 x 1100	5'7" x 3'7"

Bedroom 2	3635 x 2790	11'11" x 9'2"
Bedroom 3	2340 x 1955	7'8" x 6'5"
Bedroom 4	2790 x 2080	9'2" x 6'10"
Bathroom	2790 x 1780	9'2" x 5'10"

Bedroom 1	5565 x 3935	18'3" x 12'11"
En-Suite	2595 x 1200	8'6" x 3'11"

Space for appliance
 Hot water cylinder
 ----- 1500mm height line
 Limited use area



Wain Homes abides by the New Homes Quality Code, an independent industry code introduced to champion quality new homes and better consumer outcomes. Dimensions shown are internal finished dimensions which may vary as each home is built individually and the precise internal finishes may not always be the same. Please be aware that window and door positions could vary due to plot orientation. It is essential to view the working drawings with our Sales Executive for plot specific detail. Enquire for further information. Wain Homes Policy is continuous product and specification development. Every effort has been made to ensure the accuracy of the information provided in this leaflet at the date of publication but it may be subject to change without notice. Please consult with our Sales Executive to obtain the current specification. You should take appropriate steps to verify any information upon which you wish to rely. The sizes indicated are not intended to be used for carpet sizes, appliance spaces or items of furniture. Elevational treatments may vary to those shown. These particulars are intended for guidance only and their accuracy is not guaranteed. They do not constitute a contract, part of a contract or warranty. (February 2026)

