

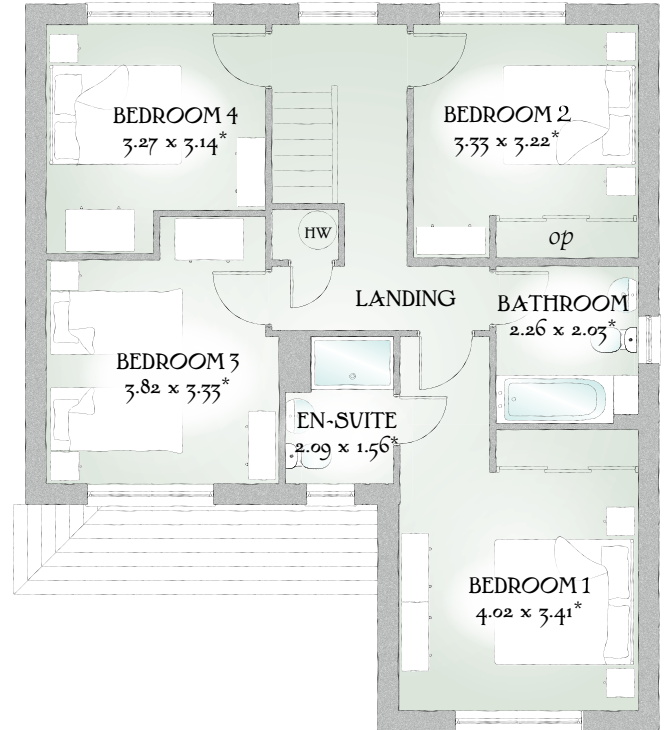
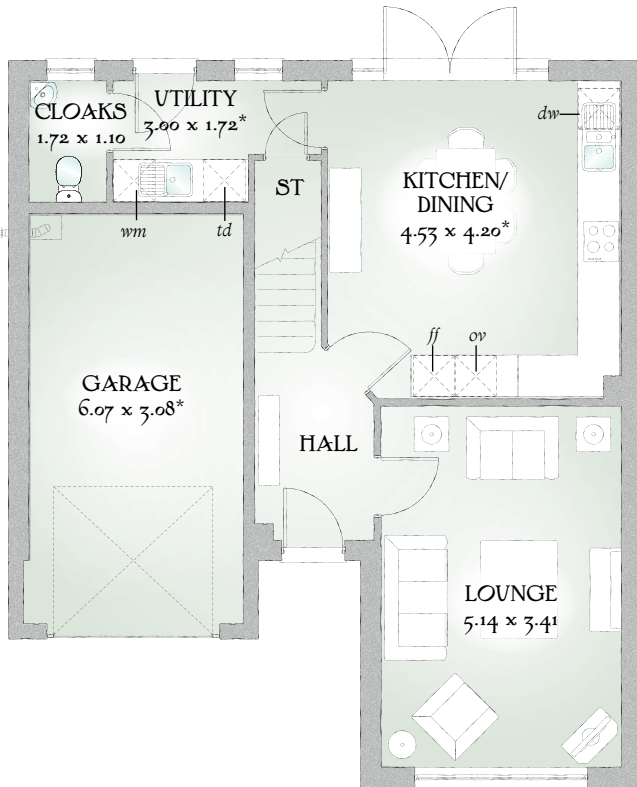


# Marlow<sup>†</sup>

FOUR BEDROOM HOME



 REDROW



## FOUR BEDROOM HOME

This home has extensive living space that excels at every turn, from the pleasing proportions of every room to the excellent use of space, from the well thought out flow of life and light to the luxurious finishing touches.

### GROUND FLOOR

Lounge	16'10" x 11'2"	5.14 x 3.41 m
Kitchen/ Dining	14'10" x 13'9"	4.53 x 4.20 m*
Utility	9'10" x 5'8"	3.00 x 1.72 m*
Cloaks	5'8" x 3'7"	1.72 x 1.10 m
Garage	19'11" x 10'1"	6.07 x 3.08 m*


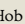
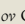
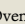

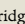
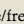
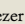
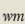
### FIRST FLOOR

Bedroom 1	13'2" x 11'2"	4.02 x 3.41 m*
En-suite	6'10" x 5'1"	2.09 x 1.56 m*
Bedroom 2	10'11" x 10'7"	3.33 x 3.22 m*
Bedroom 3	12'6" x 10'11"	3.82 x 3.33 m*
Bedroom 4	10'9" x 10'4"	3.27 x 3.14 m*
Bathroom	7'5" x 6'8"	2.26 x 2.03 m*

#### CONSUMER CODE FOR HOME BUILDERS

[www.consumercode.co.uk](http://www.consumercode.co.uk)

Customers should note this illustration is an example of The Marlow+ house type. All dimensions indicated are approximate and furniture layout is for illustrative purposes only. Homes may be 'handed' (mirror image) versions of the illustrations, and may be detached, semi-detached or terraced. Materials used may differ from plot to plot including render and roof tile colours. Detailed plans and specifications are available for inspection for each plot at our Sales Centre during working hours and customers must check their individual specifications prior to making a reservation.

KEY  Hob  Oven  Fridge/freezer  Washing machine  space  Dishwasher  Tumble dryer  Hot water cylinder  Optional wardrobe

\*Max dimensions Note: Bedroom dimensions taken into wardrobe recess. All wardrobes are subject to site specification. Please see Sales Consultant for further details.

Traditional homes, built the way you remember

 **REDROW**  
A BETTER WAY TO LIVE