

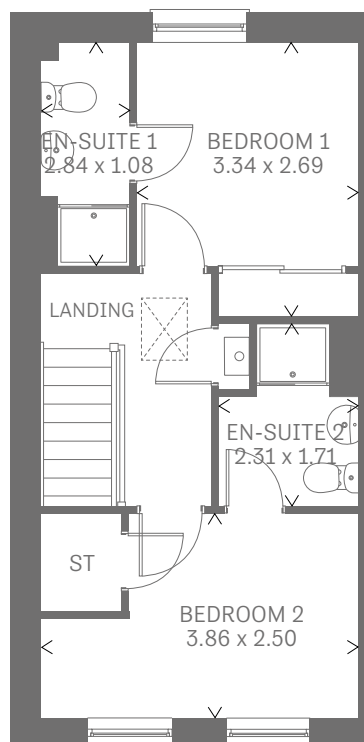
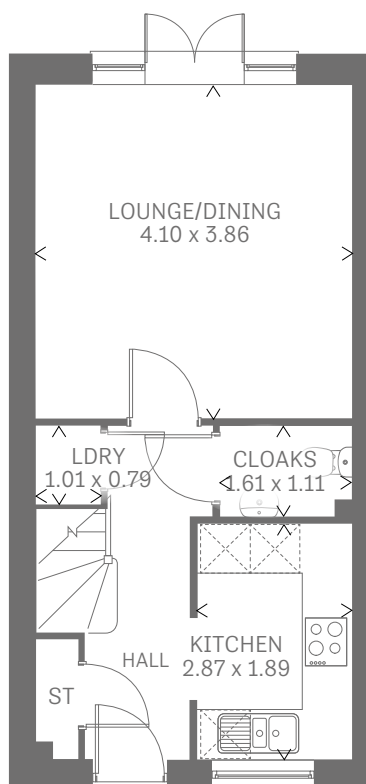
Afon Conwy

TWO BEDROOM END TERRACE HOME





Afon Conwy



Two Bedroom Home

The Afon Conwy is two bedroom living at it's very best for the smaller family, providing en-suite accommodation to both of the generous double bedrooms above a large lounge/dining room and a fully fitted kitchen below.

GROUND FLOOR

Lounge/ Dining	13'5" x 12'8"	4.10 x 3.86 m
Kitchen	9'5" x 6'2"	2.87 x 1.89 m
Cloaks	5'4" x 3'8"	1.61 x 1.11 m
Laundry	3'4" x 2'7"	1.01 x 0.79 m

FIRST FLOOR

Bedroom 1	10'11" x 8'10"	3.34 x 2.69 m
En-suite 1	9'4" x 3'7"	2.84 x 1.08 m
Bedroom 2	12'8" x 8'2"	3.86 x 2.50 m
En-suite 2	7'7" x 5'7"	2.31 x 1.71 m

CONSUMER CODE FOR HOME BUILDERS

www.consumercode.co.uk

Customers should note this illustration is an example of the Afon Conwy house type. All dimensions indicated are approximate and furniture layout is for illustrative purposes only. Homes may be 'handed' (mirror image) versions of the illustrations, and may be detached, semi-detached or terraced. Materials used may differ from plot to plot including render and roof tile colours. Detailed plans and specifications are available for inspection for each plot at our Sales Centre during working hours and customers must check their individual specifications prior to making a reservation.

KEY Hob Oven Fridge/freezer Washing machine space Dishwasher space Tumble dryer space Hot water cylinder ST Cupboard

Note: Bedroom dimensions taken into wardrobe recess. All wardrobes are subject to site specification. Please see Sales Consultant for further details.

Traditional homes, built the way you remember

 **REDROW**
A BETTER WAY TO LIVE