



# Highgate

FIVE BEDROOM HOME



 REDROW





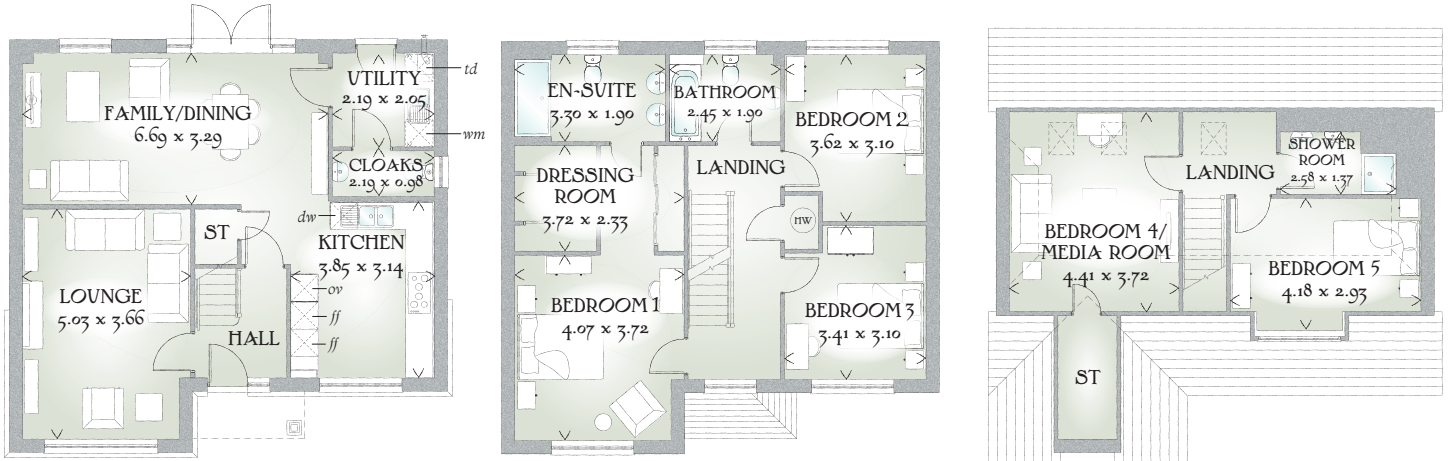
# Highgate

FIVE BEDROOM HOME



 REDROW





Beautifully balanced design means that despite its substantial, five bedroom size, it retains a sense of proportion and aesthetic integrity. Once inside, you'll discover a home that enhances the living experience for you, your family and all who visit.

## FIVE BEDROOM HOME

### GROUND FLOOR

Lounge	16'6" x 12'0"	5.03 x 3.66 m
Kitchen	12'8" x 10'4"	3.85 x 3.14 m
Family/ Dining	21'11" x 10'10"	6.69 x 3.29 m
Utility	7'2" x 6'9"	2.19 x 2.05 m
Cloaks	7'2" x 3'3"	2.19 x 0.98 m

### FIRST FLOOR

Bedroom 1	13'4" x 12'2"	4.07 x 3.72 m
En-suite	10'10" x 6'3"	3.30 x 1.90 m
Dressing Room	12'2" x 7'8"	3.72 x 2.33 m
Bedroom 2	11'11" x 10'2"	3.62 x 3.10 m
Bedroom 3	11'2" x 10'2"	3.41 x 3.10 m
Bathroom	8'0" x 6'3"	2.45 x 1.90 m

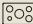

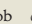
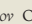
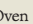

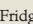
### SECOND FLOOR

Bedroom 4/ Media Room	14'6" x 12'2"	4.41 x 3.72 m
Bedroom 5	13'9" x 9'7"	4.18 x 2.93 m
Shower Room	8'6" x 4'6"	2.58 x 1.37 m

#### CONSUMER CODE FOR HOME BUILDERS

[www.consumercode.co.uk](http://www.consumercode.co.uk)

Customers should note this illustration is an example of the Highgate house type. All dimensions indicated are approximate and the furniture layout is for illustrative purposes only. Homes may be 'handed' (mirror image) versions of the illustrations, and may be detached, semi-detached or terraced. Materials used may differ from plot to plot including render and roof tile colours. Detailed plans and specifications are available for inspection for each plot at our Sales Centre during working hours and customers must check their individual specifications prior to making a reservation.

KEY  Hob  Oven  Fridge/freezer  Washing machine space  Dishwasher space  Tumble dryer space  Hot water cylinder

< Denotes where dimensions are taken from. All wardrobes are subject to site specification. Please see Sales Consultant for further details.

Traditional homes, built the way you remember

 **REDROW**  
A BETTER WAY TO LIVE