



# The Ludlow

*Three Bedroom Home*





# The Ludlow

*Three Bedroom Home*





# The Ludlow

*Three Bedroom Home*





# The Ludlow

*Three Bedroom Home*

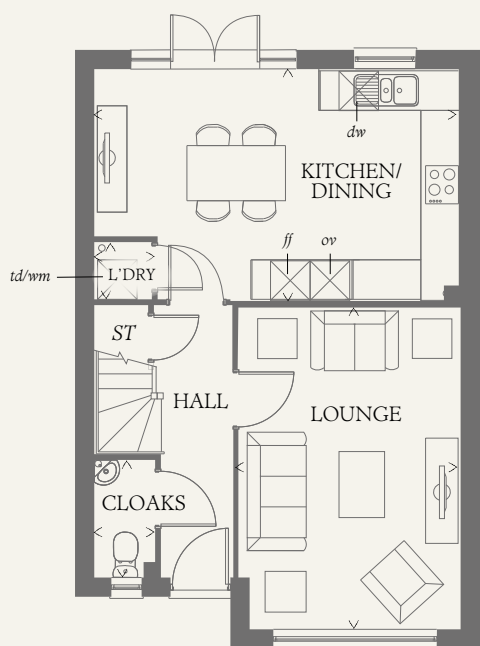




# The Ludlow

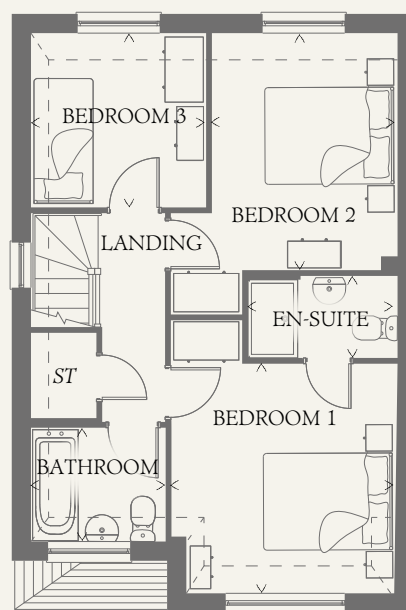
## Three Bedroom Home

Even the simplest design can have an undeniable elegance and charm, as you'll discover in the beautifully laid out Ludlow. Its traditional exterior and comfortable interior make this a property you are sure to be pleased to call home.



### GROUND FLOOR

LOUNGE	15'11" x 11'0"	4.84 x 3.35 m
KITCHEN/ DINING	18'2" x 11'5"	5.53 x 3.48 m
LAUNDRY	2'11" x 2'9"	0.90 x 0.85 m
CLOAKS	5'9" x 2'11"	1.76 x 0.90 m



### FIRST FLOOR

BEDROOM 1	11'5" x 11'3"	3.47 x 3.42 m
EN-SUITE	7'5" x 4'1"	2.26 x 1.25 m
BEDROOM 2	11'9" x 9'3"	3.58 x 2.81 m
BEDROOM 3	8'8" x 8'7"	2.64 x 2.62 m
BATHROOM	6'8" x 5'7"	2.02 x 1.71 m

#### CONSUMER CODE FOR HOME BUILDERS

[www.consumercode.co.uk](http://www.consumercode.co.uk)

Customers should note this illustration is an example of the Ludlow house type. All dimensions indicated are approximate and the furniture layout is for illustrative purposes only. Homes may be 'handed' (mirror image) versions of the illustrations, and may be detached, semi-detached or terraced. Materials used may differ from plot to plot including render and roof tile colours. Detailed plans and specifications are available for inspection for each plot at our Sales Centre during working hours and customers must check their individual specifications prior to making a reservation.

#### KEY

Hob	<i>td</i> Tumble dryer space
<i>ov</i> Oven	<i>ST</i> Cupboard
<i>ff</i> Fridge/freezer	
<i>wm</i> Washing machine space	
<i>dw</i> Dishwasher space	

< Denotes where dimensions are taken from. All wardrobes are subject to site specification. Please see Sales Consultant for further details.

THINK. 193733 EF\_LUDL\_SM.3 RV

