



# Highgrove Premium

*Five Bedroom Home*







# Highgrove Premium

*Five Bedroom Home*

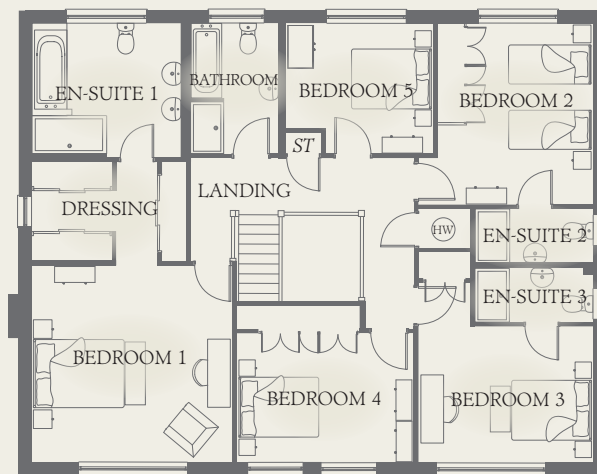
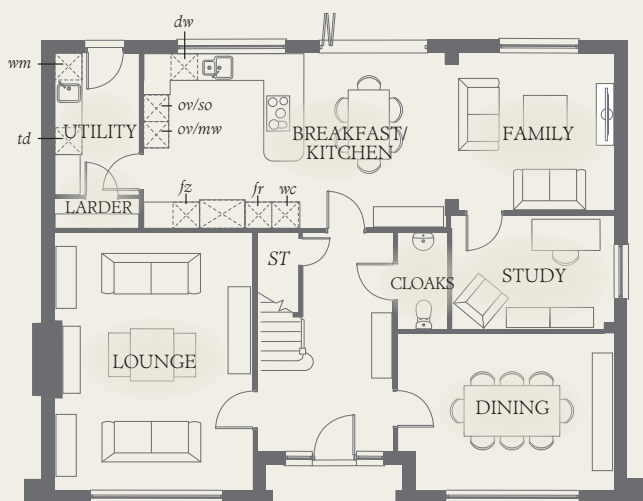




# Highgrove Premium

## Five Bedroom Home

The Highgrove is a masterpiece of modern architecture, that captures the charm & craftsmanship of days gone by, and combines these with the best in modern interior design, to create an elegant home of spacious proportions and outstanding quality.



### GROUND FLOOR

LOUNGE	19'4" x 14'10"	5.89 x 4.53 m
KITCHEN/ BREAKFAST	22'10" x 13'1"	6.96 x 4.00 m
FAMILY	11'10" x 12'7"	3.60 x 3.84 m
DINING	16'2" x 11'10"	4.94 x 3.60 m
STUDY	12'2" x 8'6"	3.72 x 2.60 m
UTILITY	10'8" x 6'3"	3.25 x 1.90 m
CLOAKS	7'3" x 3'8"	2.20 x 1.13 m
LARDER	6'3" x 2'2"	1.90 x 0.66 m

### FIRST FLOOR

BEDROOM 1	15'1" x 14'10"	4.59 x 4.51 m
DRESSING	11'7" x 7'5"	3.54 x 2.26 m
EN-SUITE 1	11'2" x 10'1"	3.41 x 3.07 m
BEDROOM 2	13'7" x 11'8"	4.15 x 3.55 m
EN-SUITE 2	8'10" x 4'1"	2.70 x 1.25 m
BEDROOM 3	13'1" x 10'2"	3.99 x 3.10 m
EN-SUITE 3	8'10" x 4'1"	2.70 x 1.25 m
BEDROOM 4	13'4" x 11'10"	4.07 x 3.60 m
BEDROOM 5	11'2" x 9'9"	3.41 x 2.98 m
BATHROOM	9'9" x 6'7"	2.98 x 2.01 m

#### CONSUMER CODE FOR HOME BUILDERS

[www.consumercode.co.uk](http://www.consumercode.co.uk)

Customers should note this illustration is an example of the Highgrove Premium house type. All dimensions indicated are approximate and the furniture layout is for illustrative purposes only. Homes may be 'handed' (mirror image) versions of the illustrations, and may be detached, semi-detached or terraced. Materials used may differ from plot to plot including render and roof tile colours. Detailed plans and specifications are available for inspection for each plot at our Sales Centre during working hours and customers must check their individual specifications prior to making a reservation.

#### KEY

Hob	<i>fr</i> Fridge
<i>ov</i> Oven	<i>so</i> Steam oven
<i>wm</i> Washing machine space	<i>mww</i> Microwave
<i>dw</i> Dishwasher space	<i>fz</i> Freezer
<i>td</i> Tumble dryer space	Hot water cylinder
<i>wc</i> Wine cooler	<i>ST</i> Cupboard

< Denotes where dimensions are taken from. All wardrobes are subject to site specification. Please see Sales Consultant for further details.

THINK. EF\_HIGHP\_DM.1.0