


Wain
HOMES

A man with a beard, wearing a pink long-sleeved shirt and a yellow and brown striped apron, is kneading dough on a floured surface. Flour is falling through the air around him, creating a soft, dreamy atmosphere. In the foreground, there is a wooden rolling pin, several red tomatoes, and some green herbs. The background shows a kitchen with white cabinets and a built-in oven.

A place that lets you be you.
That says everything about you.
That feels good, feels right.
Where life can be beautifully imperfect.
And you love every moment of it.

YOUR KIND OF *perfect*

CARDWELL PARK DEVELOPMENT PLAN



4 Bedroom Homes

- The Candleberry (CBY)
- The Cypress (CYP)
- The Elm (ELM)
- The Foxglove (FXG)
- The Hazel (HAZ)
- The Hornbeam (HOR)
- The Silverbeech (SIL)
- The Willow (WIL)

5 Bedroom Homes

- The Ash (ASH)
- The Cinnamon (CIN)

Affordable Homes

- The Candlewood (CAN)
- The Laurel (LAU)

(Location of affordable / rented homes is indicative)



Wain Homes abides by the New Homes Quality Code, an independent industry code introduced to champion quality new homes and better consumer outcomes. Dimensions shown are internal finished dimensions which may vary as each home is built individually and the precise internal finishes may not always be the same. Please be aware that window and door positions could vary due to plot orientation. It is essential to view the working drawings with our Sales Executive for plot specific detail. Enquire for further information. Wain Homes Policy is continuous product and specification development. Every effort has been made to ensure the accuracy of the information provided in this leaflet at the date of publication but it may be subject to change without notice. Please consult with our Sales Executive to obtain the current specification. You should take appropriate steps to verify any information upon which you wish to rely. The sizes indicated are not intended to be used for carpet sizes, appliance spaces or items of furniture. Elevational treatments may vary to those shown. These particulars are intended for guidance only and their accuracy is not guaranteed. They do not constitute a contract, part of a contract or warranty. (May 2025)



CARDWELL PARK SPECIFICATION

ASH | CINNAMON

KITCHENS

- Luxury Fitted Kitchens from our Standard Range with Soft Close Mechanisms in a Choice of Finishes*
- Laminated Worktops to Kitchen and Utility with Matching Upstands in a Choice of Finishes*
- 1 ½ Bowl Inset Stainless Steel Sink and Tap to the Kitchen
- Single Bowl Stainless Steel Sink and Tap to Utility Rooms
- AEG Stainless Steel Double Oven
- AEG Stainless Steel Microwave
- AEG 4-Ring Induction Hob with Silver Glass Splashback and Extractor Hood
- Electrolux Full-Height Integrated Fridge
- Electrolux Full-Height Integrated Freezer
- Electrolux Integrated Dishwasher
- Electrolux Integrated Washing Machine
- White Downlights to Kitchen
- Pelmet Lighting to Kitchen

BATHROOMS

- Roca Vanity Unit to Bathroom and En-Suite 1 in a Choice of Finishes*
- Roca Gap Sanitaryware to Cloakroom and En-Suite 2 in White with Semi Pedestals and Soft Close Seats
- Roca Gap Bath
- Aqualisa Downtown Brassware
- Aqualisa Mian 2-Way Mixer Shower with Ceiling Drencher and Adjustable Hose to Shower Cubicles
- Chrome Shower Cubicles
- Bathrooms and En-Suites to be Half-Tiled throughout with a Choice from our Tileflair Standard Range*
- Shower Cubicles to be Fully-Tiled with a Choice from our Tileflair Standard Range*
- Half-Height Tiling to all Sanitaryware Walls in Cloakroom with a Choice from our Tileflair Standard Range*
- White Heated Towel Rail to Bathroom and En-Suites
- White Downlights to Bathrooms and En-Suites
- White Shaver Socket to Bathrooms and En-Suites

HEATING SYSTEM

- Gas Central Heating with High Efficiency Boiler and Panel Radiators
- Honeywell T6 Thermostat

OTHER INTERNAL FEATURES

- Amtico First LVT Flooring to Kitchen, Dining, Utility, Bathrooms, En-Suites and Cloakrooms in a Choice of Finishes*
- Carpets from our Standard Range to all other areas in a Choice of Finishes*
- All Ceilings to be Skim Finished and Painted White
- All Walls to be Skim Finished and Painted White
- All Woodwork to be Finished in White Satinwood
- Staircase, including Newel Posts and Spindles to be Finished in White Satinwood
- All Handrails and Newel Caps to be Finished in Oak
- Vertical 5-Panel Oak Veneer Doors with Chrome Effect Door Furniture
- Spacepro Fitted Wardrobes with Sliding Doors to Bedroom 1+
- Ultrafast Hard Wired Fibre Broadband**
- White Sockets and Switches throughout
- CAT6 Data Point to Lounge and Bedroom 1
- CAT6 Data Point to Study (Cinnamon only)
- Television Aerial Socket to Lounge and Bedroom 1
- Telephone Point to Lounge
- Hard Wired Smoke Detectors with Battery Backup
- White USB sockets to Kitchen, Lounge, Family Room and all Bedrooms
- System 3 Ventilation System

EXTERNAL FEATURES

- White PVCu Windows and Rear, Side and French Doors
- White Aluminium Bi-Fold Doors
- White PVCu Fascias and Soffits
- Black Rainwater Goods
- Pebble Composite Front Door
- External PIR Lights to Front and Rear
- 7.4kW Car Charging Point
- Power and Lighting to all Garages
- External Tap
- Pebble Composite Garage Doors
- Gardens Landscaped to Front
- Gardens Turfed to Rear
- 1.8m Close Boarded Divisional Fencing to Rear Garden^

WARRANTIES

- 10-Year NHBC Buildmark Warranty
- 2-Year Wain Homes Warranty

*Upgraded Choices available. **Ultrafast Fibre is the latest in broadband technology that sees your broadband speeds faster than ever before – the next generation of internet, as fibre optic technology evolves, you'll already have everything you need in your property to get the benefits. Please note these services may be not fully active at completion stage until the relevant works have been completed by the service provider. ^Excluding mirrors. ^Unless stipulated otherwise on the working drawings.

Wain Homes Policy is continuous product and specification development. Images shown are for illustrative purposes only. Every effort has been made to ensure the accuracy of the information provided in this leaflet at the date of publication but it may be subject to change without notice. Specification choices are subject to build stage. Please consult with our Sales Executive to obtain the current specification or the specification of any particular plot. You should take appropriate steps to verify any information upon which you wish to rely. These particulars are intended for guidance only and their accuracy is not guaranteed. They do not constitute a contract, part of a contract or warranty. (May 2025)

wain
HOMES

CARDWELL PARK SPECIFICATION

CANDLEBERRY | CYPRESS | ELM | FOXGLOVE | HAZEL
HORNBEAM | SILVERBEECH | WILLOW

KITCHENS

- Luxury Fitted Kitchens from our Standard Range with Soft Close Mechanisms in a Choice of Finishes*
- Laminated Worktops to Kitchen and Utility with Matching Upstands in a Choice of Finishes*
- 1 ½ Bowl Inset Stainless Steel Sink and Tap to the Kitchen
- Single Bowl Stainless Steel Sink and Tap to Utility Rooms
- AEG Stainless Steel Double Oven (4 bed homes only)
- AEG Stainless Steel Single Oven (2 and 3 bed homes only)
- AEG 4-Ring Induction Hob with Silver Glass Splashback and Extractor Hood
- Electrolux Integrated Fridge Freezer
- Electrolux Integrated Dishwasher
- Electrolux Integrated Washing Machine
- White Downlights to Kitchen
- Pelmet Lighting to Kitchen

BATHROOMS

- Roca Vanity Unit to Bathroom and En-Suite 1 in a Choice of Finishes*
- Roca Gap Sanitaryware to Cloakroom and En-Suite 2 in White with Semi Pedestals and Soft Close Seats
- Roca Gap Bath
- Aqualisa Downtown Brassware
- Aqualisa Mian 2-Way Mixer Shower with Ceiling Drencher and Adjustable Hose to Shower Cubicles
- Aqualisa Mian 3-Way Mixer Shower with Wall Drencher and Adjustable Hose to Baths with no Separate Shower Cubicle
- Chrome Shower Cubicles
- Bathrooms and En-Suites to be Half-Tiled throughout with a Choice from our Tileflair Standard Range*
- Shower Cubicles to be Fully-Tiled with a Choice from our Tileflair Standard Range*
- Half-Height Tiling to all Sanitaryware Walls in Cloakroom with a Choice from our Tileflair Standard Range*
- White Heated Towel Rail to Bathroom and En-Suites
- White Downlights to Bathrooms and En-Suites
- White Shaver Socket to Bathrooms and En-Suites

HEATING SYSTEM

- Gas Central Heating with High Efficiency Boiler and Panel Radiators
- Honeywell T6 Thermostat

OTHER INTERNAL FEATURES

- Amtico First LVT Flooring to Kitchen, Dining, Utility, Bathrooms, En-Suites and Cloakrooms in a Choice of Finishes*
- Carpets from our Standard Range to all other areas in a Choice of Finishes*
- All Ceilings to be Skim Finished and Painted White
- All Walls to be Skim Finished and Painted White
- All Woodwork to be Finished in White Satinwood
- Staircase, including Newel Posts and Spindles to be Finished in White Satinwood
- All Handrails and Newel Caps to be Finished in Oak
- Vertical 5-Panel Oak Veneer Doors with Chrome Effect Door Furniture
- Spacepro Fitted Wardrobes with Sliding Doors to Bedroom 1+
- Ultrafast Hard Wired Fibre Broadband**
- White Sockets and Switches throughout
- CAT6 Data Point to Lounge and Bedroom 1
- Television Aerial Socket to Lounge and Bedroom 1
- Telephone Point to Lounge
- Hard Wired Smoke Detectors with Battery Backup
- White USB sockets to Kitchen, Lounge, Family Room and all Bedrooms
- System 3 Ventilation System

EXTERNAL FEATURES

- White PVCu Windows and Rear, Side and French Doors
- White Aluminium Bi-Fold Doors (Elm only)
- White PVCu Fascias and Soffits
- Black Rainwater Goods
- Pebble Composite Front Door
- External PIR Lights to Front and Rear
- 7.4kW Car Charging Point
- Power and Lighting to all Garages
- External Tap
- Pebble Composite Garage Doors
- Gardens Landscaped to Front
- Gardens Turfed to Rear
- 1.8m Close Boarded Divisional Fencing to Rear Garden^

WARRANTIES

- 10-Year NHBC Buildmark Warranty
- 2-Year Wain Homes Warranty

*Upgraded Choices available. **Ultrafast Fibre is the latest in broadband technology that sees your broadband speeds faster than ever before – the next generation of internet, as fibre optic technology evolves, you'll already have everything you need in your property to get the benefits. Please note these services may be not fully active at completion stage until the relevant works have been completed by the service provider. ^Excluding mirrors. ^Unless stipulated otherwise on the working drawings.

Wain Homes Policy is continuous product and specification development. Images shown are for illustrative purposes only. Every effort has been made to ensure the accuracy of the information provided in this leaflet at the date of publication but it may be subject to change without notice. Specification choices are subject to build stage. Please consult with our Sales Executive to obtain the current specification or the specification of any particular plot. You should take appropriate steps to verify any information upon which you wish to rely. These particulars are intended for guidance only and their accuracy is not guaranteed. They do not constitute a contract, part of a contract or warranty. (May 2025)

wain
HOMES

CARDWELL PARK SPECIFICATION

AFFORDABLE HOMES

KITCHENS

- Luxury Fitted Kitchens from our Standard Range with Soft Close Mechanisms in a Choice of Finishes*
- Laminated Worktops to Kitchen with Matching Upstands in a Choice of Finishes*
- 1 ½ Bowl Inset Stainless Steel Sink and Tap to the Kitchen
- Electrolux Stainless Steel Single Oven
- Electrolux 4-Ring Ceramic Hob with Silver Glass Splashback and Stainless Steel Extractor Hood

BATHROOMS

- Roca Gap Sanitaryware in White with Semi Pedestals and Soft Close Seats
- Roca Gap Bath
- Aqualisa Downtown Brassware
- Aqualisa Mian Mixer Shower with Round Bar Valve and Handset to Bathrooms, En-Suites or Over Bath if no En-Suite
- Chrome Shower Cubicles to En-Suites
- Bathrooms and En-Suites to be Half-Tiled throughout with White Gloss Tiles from our Tileflair Standard Range*
- Shower Screen and Full-Height Tiles around the Bath with White Gloss Tiles from our Tileflair Standard Range* if no En-Suite
- Shower Cubicles to be Fully-Tiled with White Gloss Tiles from our Tileflair Standard Range*
- Half-Height Tiling to all Sanitaryware Walls in Cloakroom with White Gloss Tiles from our Tileflair Standard Range*
- White Heated Towel Rail to Bathroom and En-Suites
- White Shaver Socket to Bathrooms and En-Suites

HEATING SYSTEM

- Gas Central Heating with High Efficiency Boiler and Panel Radiators
- Honeywell T6 Smart Thermostat

OTHER INTERNAL FEATURES

- All Ceilings to be Skim Finished and Painted White
- All Walls to be Skim Finished and Painted White
- All Woodwork to be Finished in White Satinwood
- Staircase, including Newel Posts, Handrails, Newel Caps and Spindles to be Finished in White Satinwood
- Vertical 5-Panel Internal Doors to be Finished in White Satinwood with Chrome Effect Door Furniture
- Ultrafast Hard Wired Fibre Broadband**
- White Sockets and Switches throughout
- CAT6 Data Point to Lounge and Bedroom 1
- Television Aerial Socket to Lounge and Bedroom 1
- Telephone Point to Lounge
- Hard Wired Smoke Detectors with Battery Backup
- White USB sockets to Kitchen, Lounge, Family Room and all Bedrooms
- System 3 Ventilation System

EXTERNAL FEATURES

- White PVCu Windows and Rear, Side and French Doors
- White PVCu Fascias and Soffits
- Black Rainwater Goods
- Pebble Composite Front Door
- External PIR Light to Front
- 7.4kW Car Charging Point
- Gardens Landscaped to Front
- 1.8m Close Boarded Divisional Fencing to Rear Garden^

WARRANTIES

- 10-Year NHBC Buildmark Warranty
- 2-Year Wain Homes Warranty

*Upgraded Choices available. **Ultrafast Fibre is the latest in broadband technology that sees your broadband speeds faster than ever before – the next generation of internet, as fibre optic technology evolves, you'll already have everything you need in your property to get the benefits. Please note these services may be not fully active at completion stage until the relevant works have been completed by the service provider. ^Unless stipulated otherwise on the working drawings.

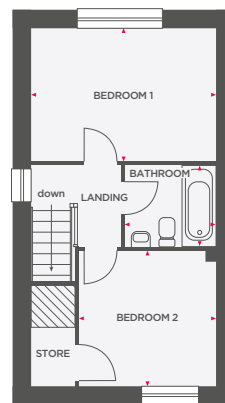
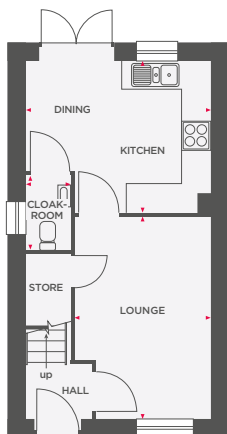
Wain Homes Policy is continuous product and specification development. Images shown are for illustrative purposes only. Every effort has been made to ensure the accuracy of the information provided in this leaflet at the date of publication but it may be subject to change without notice. Specification choices are subject to build stage. Please consult with our Sales Executive to obtain the current specification or the specification of any particular plot. You should take appropriate steps to verify any information upon which you wish to rely. These particulars are intended for guidance only and their accuracy is not guaranteed. They do not constitute a contract, part of a contract or warranty. (May 2025)

Wain
HOMES



THE CANDLEWOOD

2 BEDROOM SEMI-DETACHED HOME



| | | |
|----------------|-------------------|---------------------|
| Lounge | 2855 x 4269 (max) | 9'4" x 14'0" (max) |
| Kitchen/Dining | 3887 x 3204 (max) | 12'9" x 10'6" (max) |
| Cloakroom | 944 x 1575 | 3'1" x 5'2" |

| | | |
|-----------|-------------|--------------|
| Bedroom 1 | 3887 x 2816 | 12'9" x 9'2" |
| Bedroom 2 | 2884 x 2857 | 9'5" x 9'4" |
| Bathroom | 1913 x 1700 | 6'3" x 5'7" |

 Limited use area



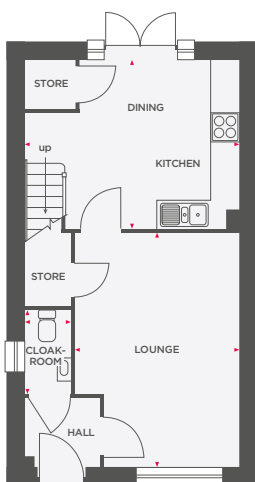
Wain Homes abides by the New Homes Quality Code, an independent industry code introduced to champion quality new homes and better consumer outcomes. Dimensions shown are internal finished dimensions which may vary as each home is built individually and the precise internal finishes may not always be the same. Please be aware that window and door positions could vary due to plot orientation. It is essential to view the working drawings with our Sales Executive for plot specific detail. Enquire for further information. Wain Homes Policy is continuous product and specification development. Every effort has been made to ensure the accuracy of the information provided in this leaflet at the date of publication but it may be subject to change without notice. Please consult with our Sales Executive to obtain the current specification. You should take appropriate steps to verify any information upon which you wish to rely. The sizes indicated are not intended to be used for carpet sizes, appliance spaces or items of furniture. Elevational treatments may vary to those shown. These particulars are intended for guidance only and their accuracy is not guaranteed. They do not constitute a contract, part of a contract or warranty. (May 2025)

Wain
HOMES

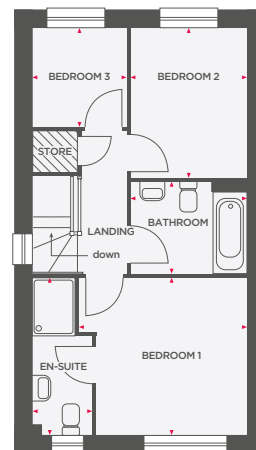


THE LAUREL

3 BEDROOM SEMI-DETACHED HOME



| | | |
|----------------|-------------------------|---------------------------|
| Lounge | 3449 x 4929 (max) | 11'3" x 16'2" (max) |
| Kitchen/Dining | 4506 (max) x 3557 (max) | 19'9" (max) x 11'8" (max) |
| Cloakroom | 1751 x 969 | 5'9" x 3'2" |



| | | |
|-----------|-------------------|----------------------|
| Bedroom 1 | 3164 (max) x 3302 | 10'4" (max) x 10'10" |
| Bedroom 2 | 2435 x 3168 | 7'11" x 10'4" |
| Bedroom 3 | 1983 x 2073 | 6'6" x 6'9" |
| Bathroom | 2435 x 1928 | 8'0" x 6'4" |
| En-Suite | 1254 x 3302 (max) | 4'1" x 10'10" (max) |

 Limited use area



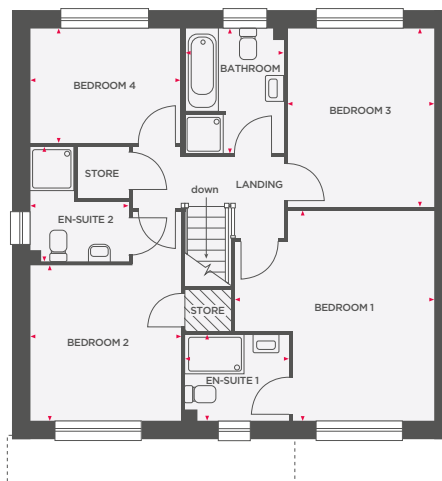
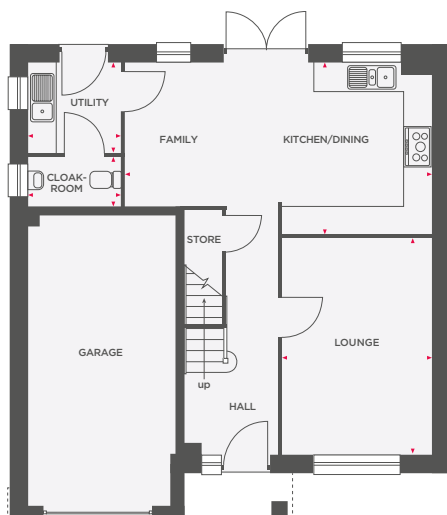
Wain Homes abides by the New Homes Quality Code, an independent industry code introduced to champion quality new homes and better consumer outcomes. Dimensions shown are internal finished dimensions which may vary as each home is built individually and the precise internal finishes may not always be the same. Please be aware that window and door positions could vary due to plot orientation. It is essential to view the working drawings with our Sales Executive for plot specific detail. Enquire for further information. Wain Homes Policy is continuous product and specification development. Every effort has been made to ensure the accuracy of the information provided in this leaflet at the date of publication but it may be subject to change without notice. Please consult with our Sales Executive to obtain the current specification. You should take appropriate steps to verify any information upon which you wish to rely. The sizes indicated are not intended to be used for carpet sizes, appliance spaces or items of furniture. Elevational treatments may vary to those shown. These particulars are intended for guidance only and their accuracy is not guaranteed. They do not constitute a contract, part of a contract or warranty. (May 2025)





THE CANDLEBERRY

4 BEDROOM DETACHED HOME WITH INTEGRAL GARAGE



| | | |
|-----------------------|-------------------|---------------------|
| Lounge | 3095 x 4475 | 10'1" x 14'8" |
| Kitchen/Dining/Family | 6358 x 3536 (max) | 20'8" x 11'7" (max) |
| Utility | 1902 x 1853 (max) | 6'3" x 6'1" (max) |
| Cloakroom | 1902 x 1038 | 6'3" x 3'5" |

| | | |
|------------|-------------------|---------------------|
| Bedroom 1 | 4103 x 4334 (max) | 13'5" x 14'2" (max) |
| En-Suite 1 | 2132 x 1769 | 7'0" x 5'10" |
| Bedroom 2 | 3114 x 3227 (max) | 10'2" x 10'7" (max) |
| En-Suite 2 | 2036 x 2346 (max) | 6'8" x 7'8" (max) |
| Bedroom 3 | 3008 x 3676 | 9'10" x 12'0" |
| Bedroom 4 | 3106 x 2350 | 10'2" x 7'8" |
| Bathroom | 2046 x 2581 | 6'9" x 8'6" |

 Limited use area



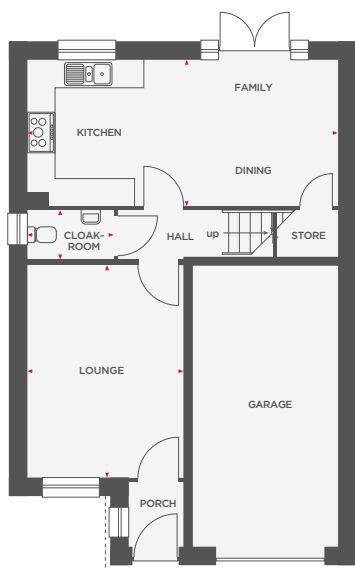
Wain Homes abides by the New Homes Quality Code, an independent industry code introduced to champion quality new homes and better consumer outcomes. Dimensions shown are internal finished dimensions which may vary as each home is built individually and the precise internal finishes may not always be the same. Please be aware that window and door positions could vary due to plot orientation. It is essential to view the working drawings with our Sales Executive for plot specific detail. Enquire for further information. Wain Homes Policy is continuous product and specification development. Every effort has been made to ensure the accuracy of the information provided in this leaflet at the date of publication but it may be subject to change without notice. Please consult with our Sales Executive to obtain the current specification. You should take appropriate steps to verify any information upon which you wish to rely. The sizes indicated are not intended to be used for carpet sizes, appliance spaces or items of furniture. Elevational treatments may vary to those shown. These particulars are intended for guidance only and their accuracy is not guaranteed. They do not constitute a contract, part of a contract or warranty. (May 2025)

**Wain
HOMES**

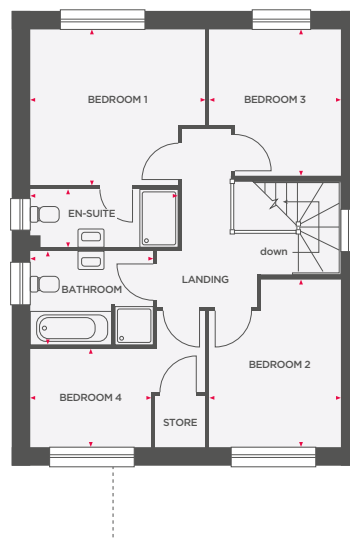


THE CYPRESS

4 BEDROOM DETACHED HOME WITH INTEGRAL GARAGE



| | | |
|-----------------------|-------------|----------------|
| Lounge | 3306 x 4469 | 10'10" x 14'8" |
| Kitchen/Dining/Family | 6548 x 3091 | 21'6" x 10'2" |
| Cloakroom | 1819 x 1020 | 6'0" x 3'4" |



| | | |
|-----------|-------------------|---------------------|
| Bedroom 1 | 3694 x 3290 (max) | 12'1" x 10'9" (max) |
| En-Suite | 3119 x 1200 | 10'3" x 3'11" |
| Bedroom 2 | 2769 x 3551 (max) | 9'1" x 11'8" (max) |
| Bedroom 3 | 2769 x 3067 (max) | 9'1" x 10'1" (max) |
| Bedroom 4 | 2553 x 2069 | 8'4" x 6'9" |
| Bathroom | 2591 x 1951 | 8'6" x 6'5" |



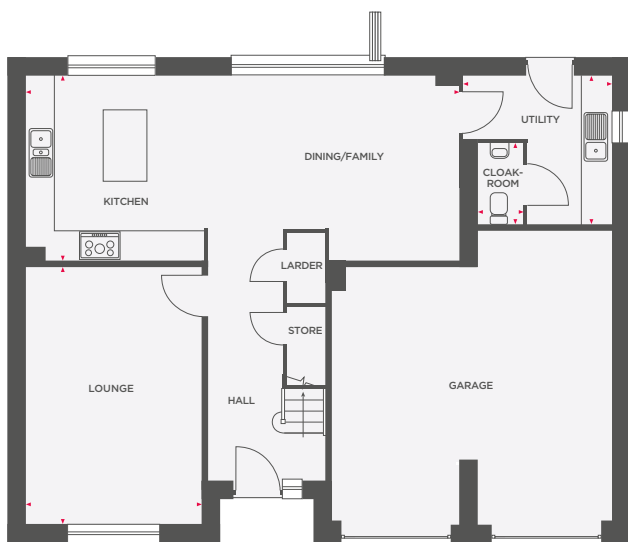
Wain Homes abides by the New Homes Quality Code, an independent industry code introduced to champion quality new homes and better consumer outcomes. Dimensions shown are internal finished dimensions which may vary as each home is built individually and the precise internal finishes may not always be the same. Please be aware that window and door positions could vary due to plot orientation. It is essential to view the working drawings with our Sales Executive for plot specific detail. Enquire for further information. Wain Homes Policy is continuous product and specification development. Every effort has been made to ensure the accuracy of the information provided in this leaflet at the date of publication but it may be subject to change without notice. Please consult with our Sales Executive to obtain the current specification. You should take appropriate steps to verify any information upon which you wish to rely. The sizes indicated are not intended to be used for carpet sizes, appliance spaces or items of furniture. Elevational treatments may vary to those shown. These particulars are intended for guidance only and their accuracy is not guaranteed. They do not constitute a contract, part of a contract or warranty. (May 2025)



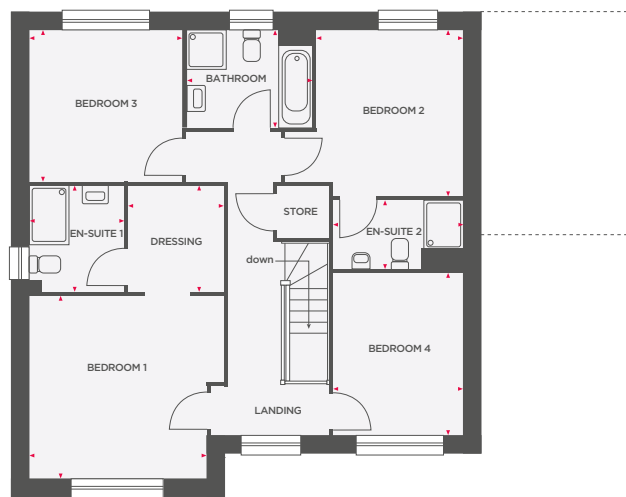


THE ELM

4 BEDROOM DETACHED HOME WITH INTEGRAL DOUBLE GARAGE



| | | |
|-----------------------|-------------------|---------------------|
| Lounge | 3623 x 5297 | 11'11" x 17'5" |
| Kitchen/Dining/Family | 8910 x 3801 | 29'3" x 12'6" |
| Utility | 3099 x 3106 (max) | 10'1" x 10'0" (max) |
| Cloakroom | 932 x 1662 | 3'1" x 5'5" |



| | | |
|------------|-------------|----------------|
| Bedroom 1 | 3622 x 3744 | 11'10" x 12'3" |
| En-Suite 1 | 1919 x 2197 | 6'4" x 7'2" |
| Dressing | 1975 x 2197 | 6'5" x 7'2" |
| Bedroom 2 | 3013 x 3413 | 9'10" x 11'2" |
| En-Suite 2 | 2672 x 1422 | 8'9" x 4'8" |
| Bedroom 3 | 3113 x 3106 | 10'2" x 10'2" |
| Bedroom 4 | 2672 x 3338 | 8'9" x 10'11" |
| Bathroom | 2546 x 1994 | 8'4" x 6'6" |



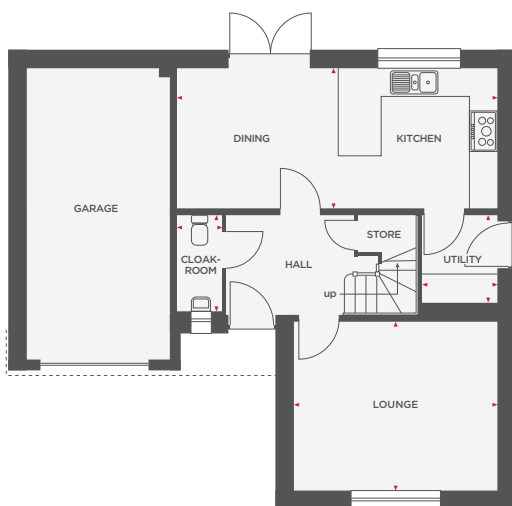
Wain Homes abides by the New Homes Quality Code, an independent industry code introduced to champion quality new homes and better consumer outcomes. Dimensions shown are internal finished dimensions which may vary as each home is built individually and the precise internal finishes may not always be the same. Please be aware that window and door positions could vary due to plot orientation. It is essential to view the working drawings with our Sales Executive for plot specific detail. Enquire for further information. Wain Homes Policy is continuous product and specification development. Every effort has been made to ensure the accuracy of the information provided in this leaflet at the date of publication but it may be subject to change without notice. Please consult with our Sales Executive to obtain the current specification. You should take appropriate steps to verify any information upon which you wish to rely. The sizes indicated are not intended to be used for carpet sizes, appliance spaces or items of furniture. Elevational treatments may vary to those shown. These particulars are intended for guidance only and their accuracy is not guaranteed. They do not constitute a contract, part of a contract or warranty. (May 2025)

**Wain
HOMES**

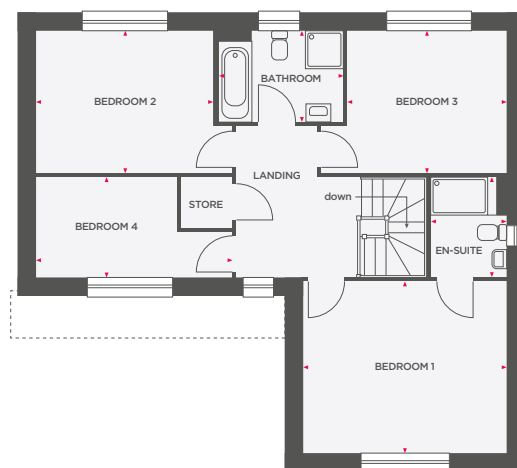


THE FOXGLOVE

4 BEDROOM DETACHED HOME WITH INTEGRAL GARAGE



| | | |
|----------------|-------------|---------------|
| Lounge | 4298 x 3563 | 14'1" x 11'8" |
| Kitchen/Dining | 6746 x 2954 | 22'1" x 9'10" |
| Utility | 1592 x 1846 | 5'3" x 6'1" |
| Cloakroom | 906 x 2044 | 3'0" x 6'8" |



| | | |
|-----------|-------------------|---------------------|
| Bedroom 1 | 4298 x 3625 | 14'1" x 11'10" |
| En-Suite | 2620 x 1928 | 8'7" x 6'4" |
| Bedroom 2 | 3744 x 3016 | 12'3" x 9'10" |
| Bedroom 3 | 3348 x 3004 | 10'11" x 9'10" |
| Bedroom 4 | 4144 x 2094 (max) | 13'7" x 6'10" (max) |
| Bathroom | 2620 x 1928 | 8'7" x 6'4" |



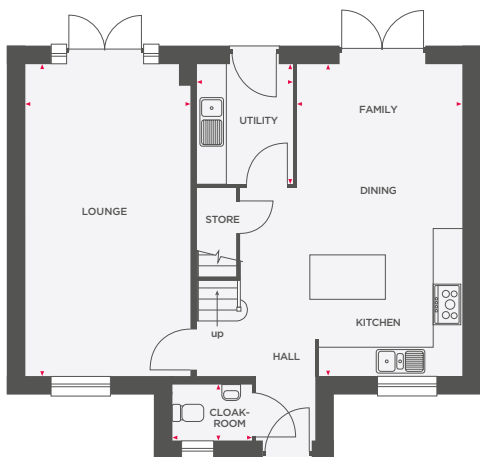
Wain Homes abides by the New Homes Quality Code, an independent industry code introduced to champion quality new homes and better consumer outcomes. Dimensions shown are internal finished dimensions which may vary as each home is built individually and the precise internal finishes may not always be the same. Please be aware that window and door positions could vary due to plot orientation. It is essential to view the working drawings with our Sales Executive for plot specific detail. Enquire for further information. Wain Homes Policy is continuous product and specification development. Every effort has been made to ensure the accuracy of the information provided in this leaflet at the date of publication but it may be subject to change without notice. Please consult with our Sales Executive to obtain the current specification. You should take appropriate steps to verify any information upon which you wish to rely. The sizes indicated are not intended to be used for carpet sizes, appliance spaces or items of furniture. Elevational treatments may vary to those shown. These particulars are intended for guidance only and their accuracy is not guaranteed. They do not constitute a contract, part of a contract or warranty. (May 2025)

Wain
HOMES



THE HAZEL

4 BEDROOM DETACHED HOME WITH DETACHED GARAGE



| | | |
|-----------------------|-------------|---------------|
| Lounge | 3407 x 6436 | 11'2" x 21'1" |
| Kitchen/Dining/Family | 3411 x 6436 | 11'2" x 21'1" |
| Utility | 1968 x 2470 | 6'5" x 8'1" |
| Cloakroom | 1627 x 1150 | 5'4" x 3'9" |



| | | |
|-----------|-------------------|---------------------|
| Bedroom 1 | 3468 x 4597 (max) | 11'5" x 15'1" (max) |
| En-Suite | 2694 x 1700 (max) | 8'10" x 5'7" (max) |
| Bedroom 2 | 2925 x 3129 (max) | 9'7" x 10'3" (max) |
| Bedroom 3 | 2950 x 3219 (max) | 9'8" x 10'7" (max) |
| Bedroom 4 | 2948 x 2475 | 9'8" x 8'1" |
| Bathroom | 2694 x 1700 | 8'10" x 5'7" |

 Limited use area



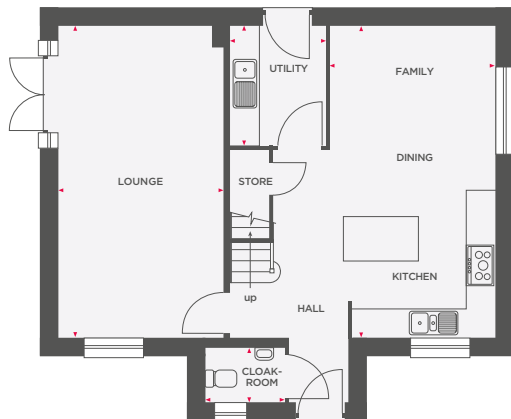
Wain Homes abides by the New Homes Quality Code, an independent industry code introduced to champion quality new homes and better consumer outcomes. Dimensions shown are internal finished dimensions which may vary as each home is built individually and the precise internal finishes may not always be the same. Please be aware that window and door positions could vary due to plot orientation. It is essential to view the working drawings with our Sales Executive for plot specific detail. Enquire for further information. Wain Homes Policy is continuous product and specification development. Every effort has been made to ensure the accuracy of the information provided in this leaflet at the date of publication but it may be subject to change without notice. Please consult with our Sales Executive to obtain the current specification. You should take appropriate steps to verify any information upon which you wish to rely. The sizes indicated are not intended to be used for carpet sizes, appliance spaces or items of furniture. Elevational treatments may vary to those shown. These particulars are intended for guidance only and their accuracy is not guaranteed. They do not constitute a contract, part of a contract or warranty. (May 2025)



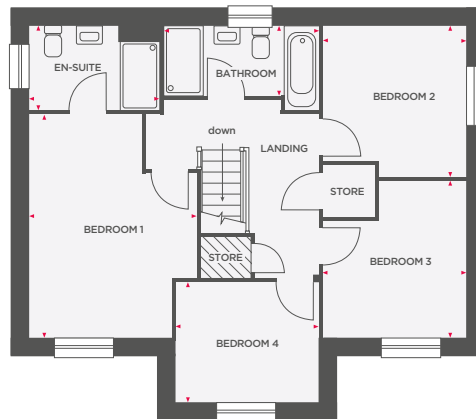


THE HORNBEAM

4 BEDROOM DETACHED HOME WITH DETACHED GARAGE



| | | |
|-----------------------|-------------|---------------|
| Lounge | 3407 x 6436 | 11'2" x 21'1" |
| Kitchen/Dining/Family | 3411 x 6436 | 11'2" x 21'1" |
| Utility | 1968 x 2470 | 6'5" x 8'1" |
| Cloakroom | 1627 x 1203 | 5'4" x 3'11" |



| | | |
|-----------|-------------------|---------------------|
| Bedroom 1 | 3468 x 4597 (max) | 11'4" x 15'0" (max) |
| En-Suite | 2694 x 1700 | 8'10" x 5'7" |
| Bedroom 2 | 2925 x 3129 (max) | 9'7" x 10'3" (max) |
| Bedroom 3 | 2950 x 3219 (max) | 9'8" x 10'6" (max) |
| Bedroom 4 | 2948 x 2487 | 9'8" x 8'2" |
| Bathroom | 3203 x 1700 | 10'6" x 5'7" |

 Limited use area



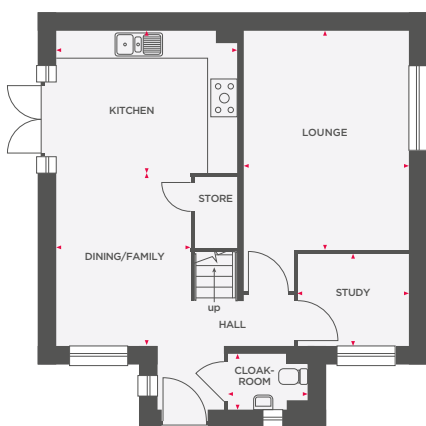
Wain Homes abides by the New Homes Quality Code, an independent industry code introduced to champion quality new homes and better consumer outcomes. Dimensions shown are internal finished dimensions which may vary as each home is built individually and the precise internal finishes may not always be the same. Please be aware that window and door positions could vary due to plot orientation. It is essential to view the working drawings with our Sales Executive for plot specific detail. Enquire for further information. Wain Homes Policy is continuous product and specification development. Every effort has been made to ensure the accuracy of the information provided in this leaflet at the date of publication but it may be subject to change without notice. Please consult with our Sales Executive to obtain the current specification. You should take appropriate steps to verify any information upon which you wish to rely. The sizes indicated are not intended to be used for carpet sizes, appliance spaces or items of furniture. Elevational treatments may vary to those shown. These particulars are intended for guidance only and their accuracy is not guaranteed. They do not constitute a contract, part of a contract or warranty. (May 2025)

**Wain
HOMES**

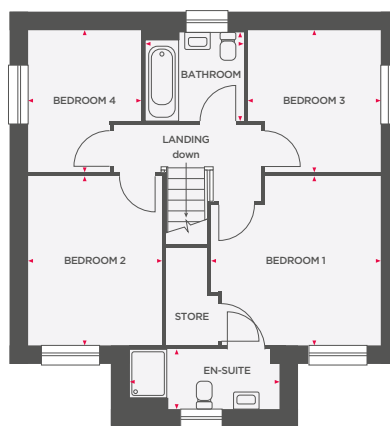


THE SILVERBEECH

4 BEDROOM DETACHED HOME WITH DETACHED GARAGE



| | | |
|---------------|-------------|---------------|
| Lounge | 3511 x 4628 | 11'6" x 15'2" |
| Kitchen | 3787 x 3005 | 12'5" x 9'10" |
| Dining/Family | 2835 x 3656 | 9'3" x 11'11" |
| Study | 2340 x 1944 | 7'8" x 6'4" |
| Cloakroom | 1686 x 1200 | 5'6" x 3'11" |



| | | |
|-----------|-------------------|---------------------|
| Bedroom 1 | 3573 x 3569 (max) | 11'8" x 11'8" (max) |
| En-Suite | 3167 x 1262 | 10'5" x 4'2" |
| Bedroom 2 | 2835 x 3568 | 9'3" x 11'8" |
| Bedroom 3 | 2803 x 3004 (max) | 9'2" x 9'10" (max) |
| Bedroom 4 | 2394 x 3004 (max) | 7'10" x 9'10" (max) |
| Bathroom | 2075 x 1872 | 6'10" x 6'2" |



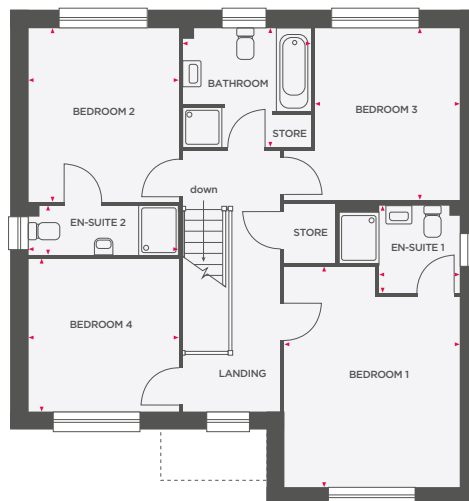
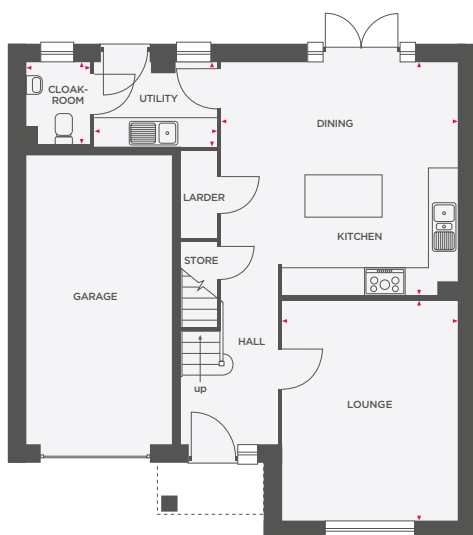
Wain Homes abides by the New Homes Quality Code, an independent industry code introduced to champion quality new homes and better consumer outcomes. Dimensions shown are internal finished dimensions which may vary as each home is built individually and the precise internal finishes may not always be the same. Please be aware that window and door positions could vary due to plot orientation. It is essential to view the working drawings with our Sales Executive for plot specific detail. Enquire for further information. Wain Homes Policy is continuous product and specification development. Every effort has been made to ensure the accuracy of the information provided in this leaflet at the date of publication but it may be subject to change without notice. Please consult with our Sales Executive to obtain the current specification. You should take appropriate steps to verify any information upon which you wish to rely. The sizes indicated are not intended to be used for carpet sizes, appliance spaces or items of furniture. Elevational treatments may vary to those shown. These particulars are intended for guidance only and their accuracy is not guaranteed. They do not constitute a contract, part of a contract or warranty. (May 2025)

Wain
HOMES



THE WILLOW

4 BEDROOM DETACHED HOME WITH INTEGRAL GARAGE



| | | |
|----------------|-------------------|---------------------|
| Lounge | 3623 x 4545 | 11'10" x 14'10" |
| Kitchen/Dining | 4880 x 4816 (max) | 16'0" x 15'9" (max) |
| Utility | 2536 x 1743 | 8'4" x 5'9" |
| Cloakroom | 1319 x 1692 | 4'4" x 5'7" |

| | | |
|------------|-------------------|-----------------------|
| Bedroom 1 | 3622 x 4554 (max) | 11'10" x 14'11" (max) |
| En-Suite 1 | 2485 x 1771 (max) | 8'2" x 5'10" (max) |
| Bedroom 2 | 3094 x 3523 | 10'1" x 11'6" |
| En-Suite 2 | 3094 x 1000 | 10'2" x 3'3" |
| Bedroom 3 | 2994 x 3522 | 9'9" x 11'6" |
| Bedroom 4 | 3094 x 3124 | 10'1" x 10'2" |
| Bathroom | 2635 x 2442 | 8'8" x 8'0" |



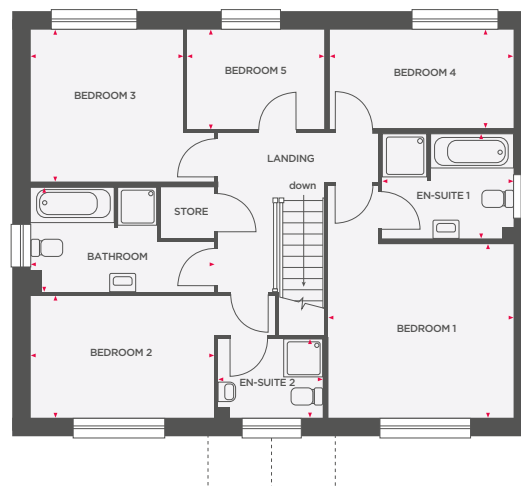
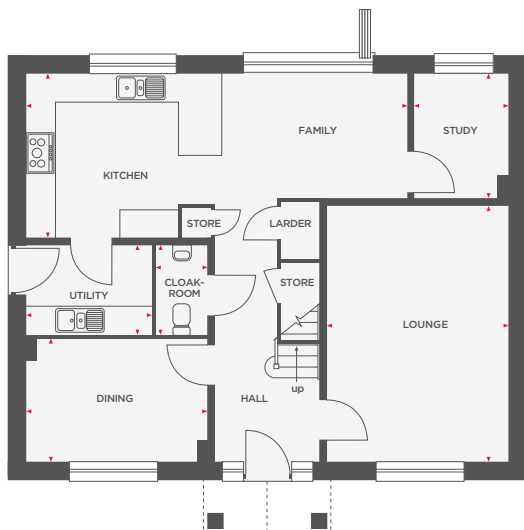
Wain Homes abides by the New Homes Quality Code, an independent industry code introduced to champion quality new homes and better consumer outcomes. Dimensions shown are internal finished dimensions which may vary as each home is built individually and the precise internal finishes may not always be the same. Please be aware that window and door positions could vary due to plot orientation. It is essential to view the working drawings with our Sales Executive for plot specific detail. Enquire for further information. Wain Homes Policy is continuous product and specification development. Every effort has been made to ensure the accuracy of the information provided in this leaflet at the date of publication but it may be subject to change without notice. Please consult with our Sales Executive to obtain the current specification. You should take appropriate steps to verify any information upon which you wish to rely. The sizes indicated are not intended to be used for carpet sizes, appliance spaces or items of furniture. Elevational treatments may vary to those shown. These particulars are intended for guidance only and their accuracy is not guaranteed. They do not constitute a contract, part of a contract or warranty. (May 2025)





THE ASH

5 BEDROOM DETACHED HOME WITH DETACHED DOUBLE GARAGE



| | | |
|----------------|-------------------|---------------------|
| Lounge | 3736 x 5292 | 12'3" x 17'4" |
| Kitchen/Family | 7866 x 3381 (max) | 25'9" x 11'1" (max) |
| Dining | 3736 x 2541 | 12'3" x 8'4" |
| Study | 1945 x 2569 | 6'5" x 8'5" |
| Utility | 2586 x 1850 | 8'6" x 6'1" |
| Cloakroom | 3736 x 2541 | 12'3" x 8'4" |

| | | |
|------------|-------------------|--------------------|
| Bedroom 1 | 3798 x 3618 | 12'5" x 11'10" |
| En-Suite 1 | 2688 x 2097 | 9'10" x 6'11" |
| Bedroom 2 | 3773 x 2527 | 12'4" x 8'11" |
| En-Suite 2 | 2151 x 1626 | 7'1" x 5'4" |
| Bedroom 3 | 3128 x 3150 | 10'3" x 10'4" |
| Bedroom 4 | 3774 x 2044 | 12'5" x 6'8" |
| Bedroom 5 | 2819 x 2068 | 9'2" x 6'9" |
| Bathroom | 3733 (max) x 2133 | 12'5" (max) x 7'0" |



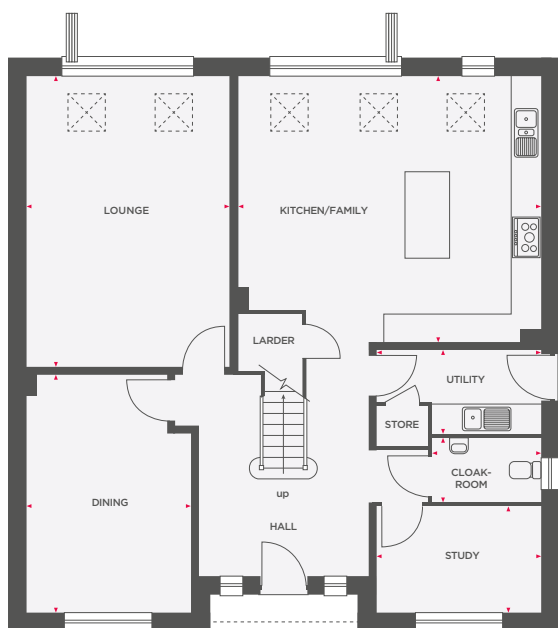
Wain Homes abides by the New Homes Quality Code, an independent industry code introduced to champion quality new homes and better consumer outcomes. Dimensions shown are internal finished dimensions which may vary as each home is built individually and the precise internal finishes may not always be the same. Please be aware that window and door positions could vary due to plot orientation. It is essential to view the working drawings with our Sales Executive for plot specific detail. Enquire for further information. Wain Homes Policy is continuous product and specification development. Every effort has been made to ensure the accuracy of the information provided in this leaflet at the date of publication but it may be subject to change without notice. Please consult with our Sales Executive to obtain the current specification. You should take appropriate steps to verify any information upon which you wish to rely. The sizes indicated are not intended to be used for carpet sizes, appliance spaces or items of furniture. Elevational treatments may vary to those shown. These particulars are intended for guidance only and their accuracy is not guaranteed. They do not constitute a contract, part of a contract or warranty. (May 2025)



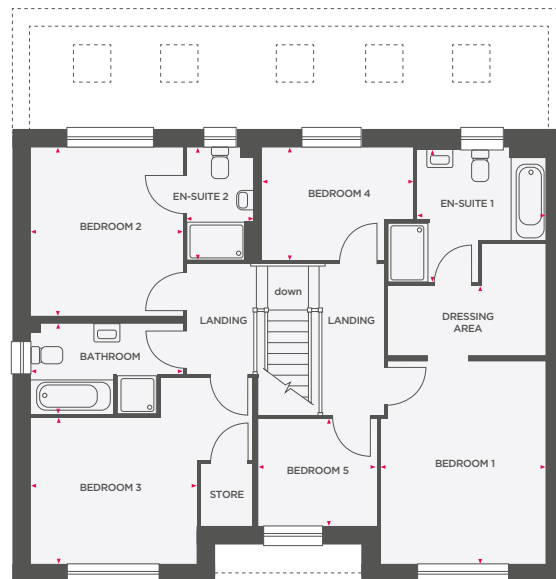


THE CINNAMON

5 BEDROOM DETACHED HOME WITH DETACHED DOUBLE GARAGE



| | | |
|----------------|-------------------|---------------------|
| Lounge | 4179 x 5982 | 13'8" x 19'7" |
| Kitchen/Family | 6229 x 5474 (max) | 20'5" x 18'0" (max) |
| Dining | 3398 x 4916 (max) | 11'2" x 16'2" (max) |
| Study | 3398 x 2194 | 11'1" x 7'2" |
| Utility | 3398 x 1729 | 11'2" x 5'8" |
| Cloakroom | 2233 x 1325 | 7'4" x 4'4" |



| | | |
|------------|-------------------|--------------------|
| Bedroom 1 | 3398 x 5712 | 11'2" x 18'9" |
| En-Suite 1 | 2637 x 2723 (max) | 8'8" x 8'11" (max) |
| Bedroom 2 | 3131 x 3482 | 10'3" x 11'5" |
| En-Suite 2 | 1379 x 2332 | 4'6" x 7'8" |
| Bedroom 3 | 3398 x 2990 | 11'2" x 9'10" |
| Bedroom 4 | 3113 x 2332 (max) | 10'3" x 7'8" (max) |
| Bedroom 5 | 2442 x 2196 | 8'0" x 7'2" |
| Bathroom | 3131 x 1851 (max) | 10'3" x 6'1" (max) |



Wain Homes abides by the New Homes Quality Code, an independent industry code introduced to champion quality new homes and better consumer outcomes. Dimensions shown are internal finished dimensions which may vary as each home is built individually and the precise internal finishes may not always be the same. Please be aware that window and door positions could vary due to plot orientation. It is essential to view the working drawings with our Sales Executive for plot specific detail. Enquire for further information. Wain Homes Policy is continuous product and specification development. Every effort has been made to ensure the accuracy of the information provided in this leaflet at the date of publication but it may be subject to change without notice. Please consult with our Sales Executive to obtain the current specification. You should take appropriate steps to verify any information upon which you wish to rely. The sizes indicated are not intended to be used for carpet sizes, appliance spaces or items of furniture. Elevational treatments may vary to those shown. These particulars are intended for guidance only and their accuracy is not guaranteed. They do not constitute a contract, part of a contract or warranty. (May 2025)

**Wain
HOMES**