

GROUND FLOOR

Kitchen/Dining

5.35m max. x 3.17m max.
17' 6" max. x 10' 5" max.

Garage

4.06m x 6.08m
13' 4" x 19' 11"

Living

3.21m x 5.80m
10' 6" x 19' 0"

Family

3.16m x 3.75m
10' 4" x 12' 3"

FIRST FLOOR

Bedroom 1

3.23m max. x 3.32m max.
10' 7" max. x 10' 11" max.

Bedroom 4

3.20m x 2.05m
10' 6" x 6' 9"

En Suite

2.40m max. x 1.35m max.
7' 10" max. x 4' 5" max.

Bathroom

2.02m max. x 1.96m max.
6' 7" max. x 6' 5" max.

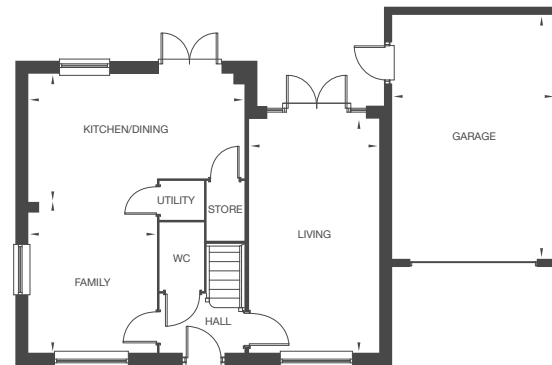
Bedroom 2

3.27m x 2.79m
10' 9" x 9' 2"

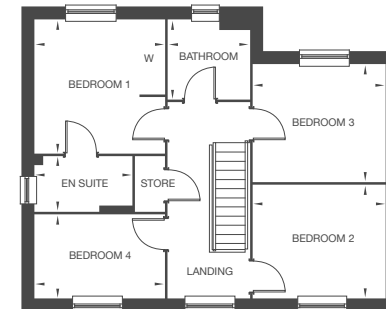
Bedroom 3

3.27m x 2.90m
10' 9" x 9' 6"

TOTAL AREA = 115.01m² 1238ft²



PLEASE SEE WORKING DRAWINGS FOR VARIATIONS TO PLOTS 18, 20, 35 & 16.



PLEASE SEE WORKING DRAWINGS FOR VARIATIONS TO PLOTS 18, 20, 35 & 16.

Information shown is for guidance only. These particulars should not be relied upon to accurately describe any aspect of the property. Although every care has been taken to ensure that information is correct, floor layout, dimensions and specification details shown are indicative only and may have been updated since this brochure was printed. Contents of this brochure do not constitute a contract, part of a contract or warranty. Please check site plan for plot handings and speak to a Sales Advisor to review full working drawings.