

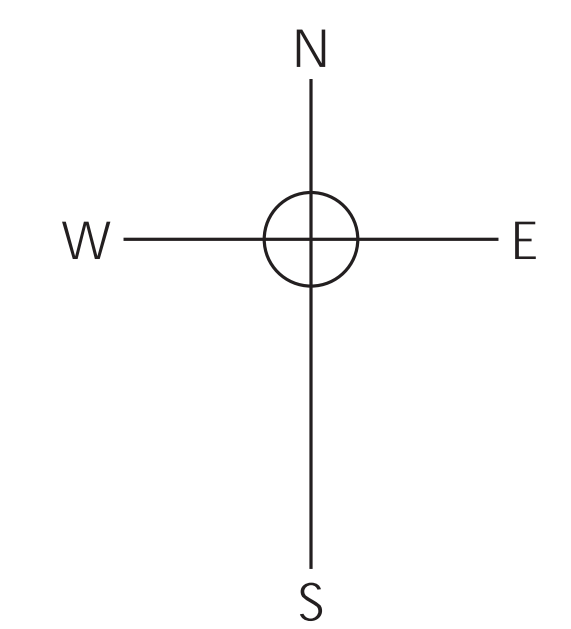
V THE
VILLAGE
~ AT WEDGWOOD PARK ~

THE VILLAGE

AT WEDGWOOD PARK

Wedgwood Drive, Nr Barlaston, ST12 9ER

	ATHERTON	3 bedroom home
	NUGENT	3 bedroom home
	GREENWOOD	3 bedroom home
	ARCHFORD	3 bedroom home
	HADLEY	3 bedroom home
	MEAFORD	4 bedroom home
	BURRINGTON	4 bedroom home
	ASHTREE	4 bedroom home
	HERTFORD	4 bedroom home
	HOLDEN	4 bedroom home
	SHENTON	4 bedroom home
	HURST	4 bedroom home
	LUXFORD	4 bedroom home
	MILLWOOD	4 bedroom home
	FLEETWOOD	4 bedroom home
	MITCHELL	4 bedroom home
	EMERSON	5 bedroom home
	MADDOC	5 bedroom home



LAKESIDE AT WEDGWOOD PARK – EXISTING DEVELOPMENT

-  For Sale
-  Reserved
-  Exchanged
-  Completed

dwh.co.uk

 **DAVID WILSON HOMES**
WHERE QUALITY LIVES

Development layouts and landscaping are not intended to form part of any contract or warranty unless specifically incorporated in writing into the contract. Images and development layouts are for illustrative purposes and should be used for general guidance only. Development layouts including parking arrangements, social/affordable housing, commercial buildings/space, retail buildings/space, play areas and public open spaces may change to reflect changes in planning permission and are not intended to form part of any contract or warranty unless specifically incorporated in writing. Please speak to your solicitor to whom full details of any planning consents including layout plans will be available. The Village is a marketing name only and may not be the designated postal address, which may be determined by The Post Office. SP302221

THE CONSUMER CODE

FOR HOME BUILDERS



The Consumer Code for Home Builders ("the Code"), which came into effect in April 2010, applies to all Home Builders registered with the UK's main new Home Warranty Bodies; NHBC, Premier Guarantee and LABC Warranty.

The Code gives protection and rights to purchasers of new Homes. It requires all new home Buyers to be treated fairly and ensure they are fully informed about their purchase before and after they sign the contract.

The aim of the Code is for all new Home Buyers to:

- be treated fairly,
- know what levels of service to expect,

- be given reliable information about their purchase and their consumer rights before and after they move in, and
- know how to access speedy, low-cost dispute resolution arrangements to deal with complaints about breaches of the Code

The Code reinforces best practice among Home Builders to encourage a consistently high level of information and customer service. It builds on successful efforts already made by the industry to improve consumer satisfaction in recent years.

The Code covers every stage of the home-buying

purchase – pre-contract, exchange of contract and during occupation.

As a 5 star housebuilder we are committed to the Consumer Code for Home Builders. For more information on the Consumer Code for Home Builders please visit <http://www.consumercode.co.uk/>



THE ARCHFORD

THREE BEDROOM HOME



Individual plots may vary, please speak to the Sales Adviser

This family home has been carefully designed throughout – from the front bay window that brings natural light streaming into the airy sitting room, to the kitchen with dining area that leads to the

rear garden via French doors. Upstairs the master bedroom features an en suite shower room while the rest of the family can enjoy a further double bedroom, a single bedroom and a family bathroom.



DAVID WILSON HOMES

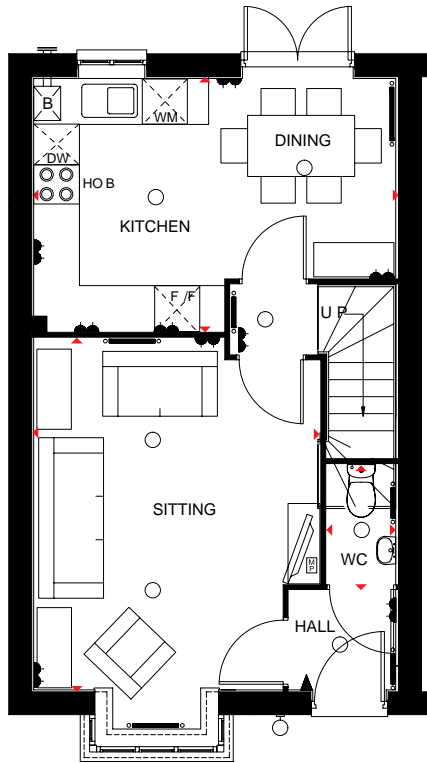
WHERE QUALITY LIVES

THE ARCHFORD

THREE BEDROOM HOME

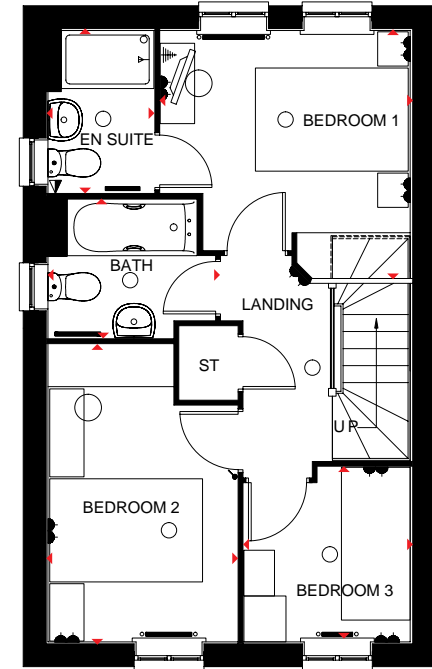
Key

- Light fitting
- ◀ Telephone outlet point
- ◻ Media plate
- Radiator
- B Boiler
- wm Washing machine space
- dw Dishwasher
- ◻ Electric socket
- ◻ T.V. aerial socket
- ◻ Shaver socket
- Towel radiator
- ST Store
- f/f Fridge/freezer space
- ◻ Dimension location



Ground Floor

Sitting	4604 x 3746 mm	15'1" x 12'3"
Kitchen/Dining	4750 x 3310 mm	15'7" x 10'10"
WC	1561 x 915 mm	5'11" x 7'2"



First Floor

Bedroom 1	3234 x 3276 mm	10'7" x 10'9"
En suite	1385 x 2119 mm	4'7" x 6'11"
Bedroom 2	2475 x 3891 mm	8'1" x 12'9"
Bedroom 3	2286 x 2186 mm	7'6" x 7'2"
Bathroom	1815 x 2181 mm	5'11" x 7'2"

PLEASE NOTE THAT PLOTS 131 & 132 WILL HAVE DARK GREEN WINDOWS, AND PLOTS 159, 160 & 161 WILL HAVE CHARTWELL GREEN WINDOWS. PLEASE REFER TO THE MATERIALS LAYOUT AND ASK THE SALES ADVISER FOR FURTHER INFORMATION.

Floor plans are intended to give a general indication of the proposed floor layout only. Dimensions are accurate to within + or - 50mm but should not be used for carpet or flooring sizes, appliance spaces or items of furniture. Please ask our Sales Adviser for details of the treatments specified for individual plots. Individual features such as windows, brick and other materials' colours may vary, as may drainage, heating and electrical layouts. Images, photographs and dimensions are not intended to form part of any contract or warranty unless specifically incorporated in writing into the contract.

P382 09BB-BE/09VE-VI



THE ATHERTON

THREE BEDROOM HOME



Individual plots may vary, please speak to the Sales Adviser



With flowing living space established over three floors, the Atherton is a desirable three bedroom home. The open-plan kitchen and dining room boasts a family area with French doors that open onto the garden, whilst the large ground floor study provides a peaceful getaway. On the first floor is a comfortable sitting room

and a double bedroom, separated by a family bathroom. The master bedroom with dual-access en suite shower room and Juliet balcony can be found on the second floor accompanied by a further double bedroom.



DAVID WILSON HOMES

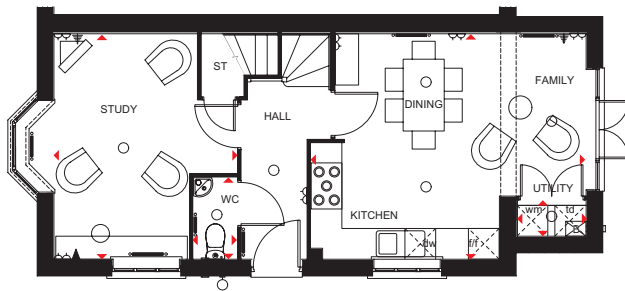
WHERE QUALITY LIVES

THE ATHERTON

THREE BEDROOM HOME

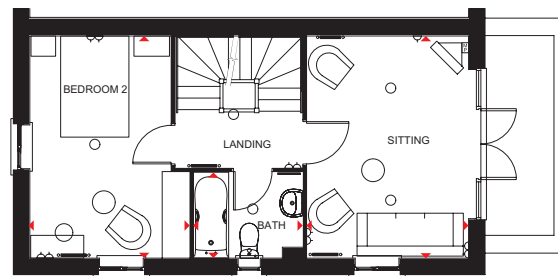
Key

- Light fitting
- ⊞ Media plate
- ⚡ T.V. aerial socket
- Radiator
- B Boiler
- CYL Cylinder
- wm Washing machine space
- td Tumble dryer space
- ⏏ Electric socket
- ☎ Telephone outlet point
- ⚡ Shaver socket
- Towel radiator
- ST Store
- f/f Fridge/freezer space
- dw Dishwasher space
- ◀▶ Dimension location



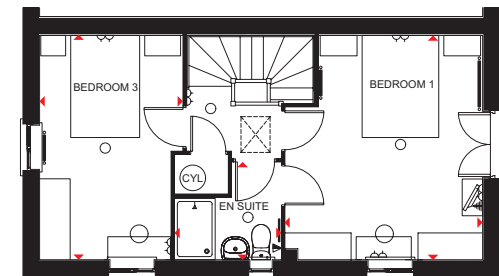
Ground Floor

Study	4403 x 2783 mm	14'5" x 9'2"
Kitchen/Family/Dining	5358 x 4403 mm	17'7" x 14'5"
WC	1589 x 850 mm	5'3" x 2'9"



First Floor

Sitting	4403 x 3192 mm	14'5" x 10'6"
Bedroom 2	4403 x 3156 mm	14'5" x 10'4"
Bath	2152 x 1700 mm	7'1" x 5'7"



Second Floor

Bedroom 1	3204 x 4403 mm	10'6" x 14'5"
En suite	2078 x 1901 mm	6'10" x 6'3"
Bedroom 3	4403 x 2795 mm	14'5" x 9'2"

Floor plans are intended to give a general indication of the proposed floor layout only. Dimensions are accurate to within + or - 50mm but should not be used for carpet or flooring sizes, appliance spaces or items of furniture. Please ask our Sales Adviser for details of the treatments specified for individual plots. Individual features such as windows, brick and other materials' colours may vary, as may drainage, heating and electrical layouts. Images, photographs and dimensions are not intended to form part of any contract or warranty unless specifically incorporated in writing into the contract. T325 09VB



THE NUGENT

THREE BEDROOM HOME



Individual plots may vary, please speak to the Sales Adviser



The Nugent is a spacious three bedroom three-storey home, cleverly designed to maximise space and comfort. There is an open-plan sitting/dining room on the ground floor, which benefits from French

doors to the rear garden. On the first floor are two double bedrooms and the family bathroom, whilst the top floor boasts the master bedroom with en suite shower room.



DAVID WILSON HOMES

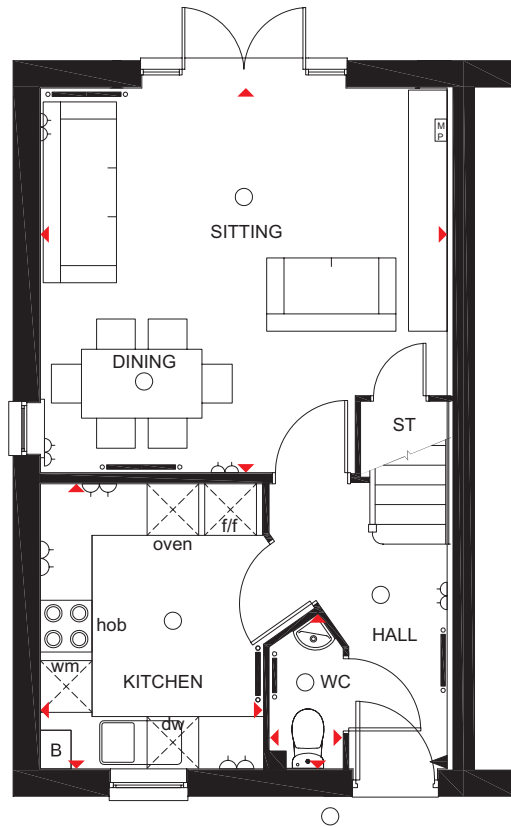
WHERE QUALITY LIVES

THE NUGENT

THREE BEDROOM HOME

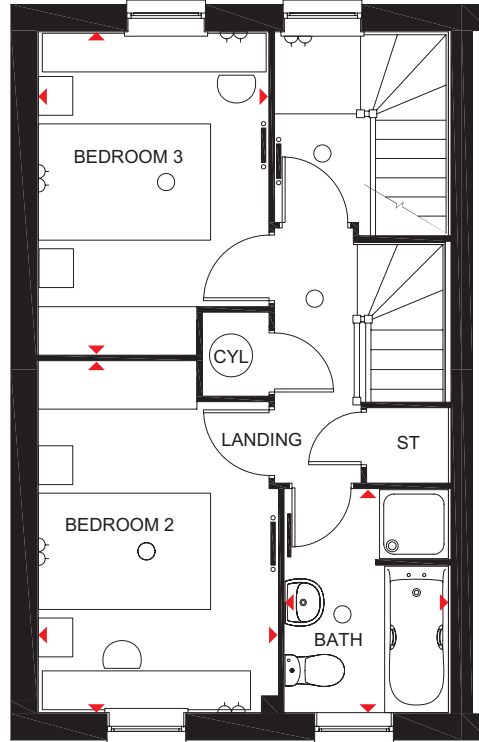
Key

- Light fitting
- ◀ Telephone outlet point
- ▣ Media plate
- Towel radiator
- ST Store
- f/f Fridge/freezer space
- dw Dishwasher space
- ◻ Electric socket
- ◀ T.V. aerial socket
- Radiator
- B Boiler
- CYL Cylinder
- wm Washing machine space
- ◀ Dimension location



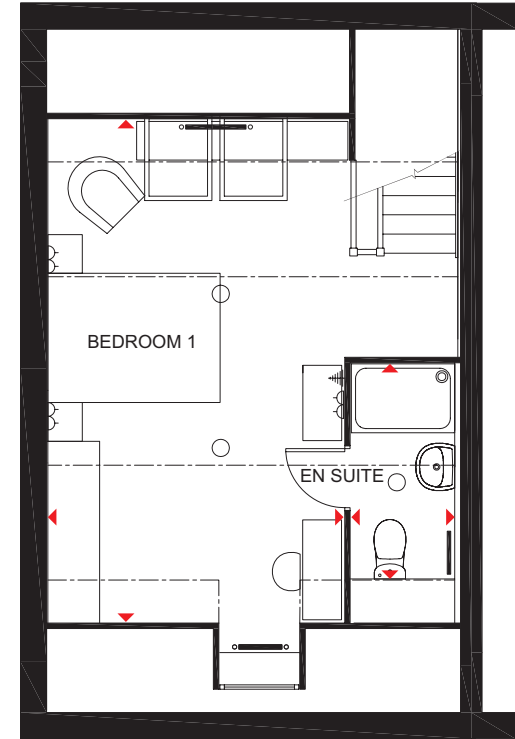
Ground Floor

Sitting/Dining	4723 x 4465 mm	15'6" x 14'8"
Kitchen	3312 x 2577 mm	10'10" x 8'5"
WC	1797 x 836 mm	5'11" x 2'9"



First Floor

Bedroom 2	2776 x 4074 mm	9'1" x 13'4"
Bedroom 3	2667 x 3742 mm	8'9" x 12'3"
Bath	1895 x 2589 mm	6'3" x 8'6"



Second Floor

Bedroom 1	5830 x 3434* mm	19'2"* x 11'3"
En suite	1200 x 2496* mm	3'11" x 8'2"*

* Overall floor dimension includes lowered ceiling areas

Floor plans are intended to give a general indication of the proposed floor layout only. Dimensions are accurate to within + or - 50mm but should not be used for carpet or flooring sizes, appliance spaces or items of furniture. Please ask our Sales Adviser for details of the treatments specified for individual plots. Individual features such as windows, brick and other materials' colours may vary, as may drainage, heating and electrical layouts. Images, photographs and dimensions are not intended to form part of any contract or warranty unless specifically incorporated in writing into the contract. T307 09BE/09RE



THE HADLEY

THREE BEDROOM DETACHED HOME



Individual plots may vary, please speak to the Sales Adviser



This impressive three bedroom home is perfect for modern family living. The ground floor boasts a comfortable sitting room with French doors that open out onto the garden and a stylish kitchen which

features dining and family areas plus an adjoining utility room. Upstairs are two double bedrooms, with an en suite shower room to the master bedroom, a single bedroom and a family bathroom.



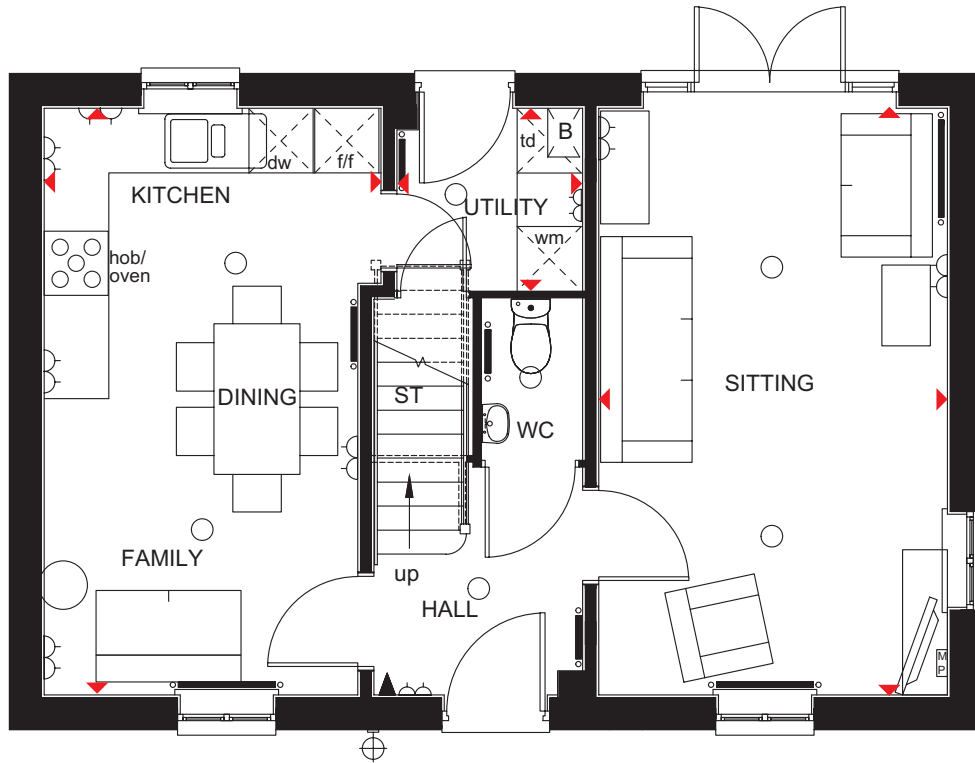
DAVID WILSON HOMES
WHERE QUALITY LIVES

THE HADLEY

THREE BEDROOM DETACHED HOME

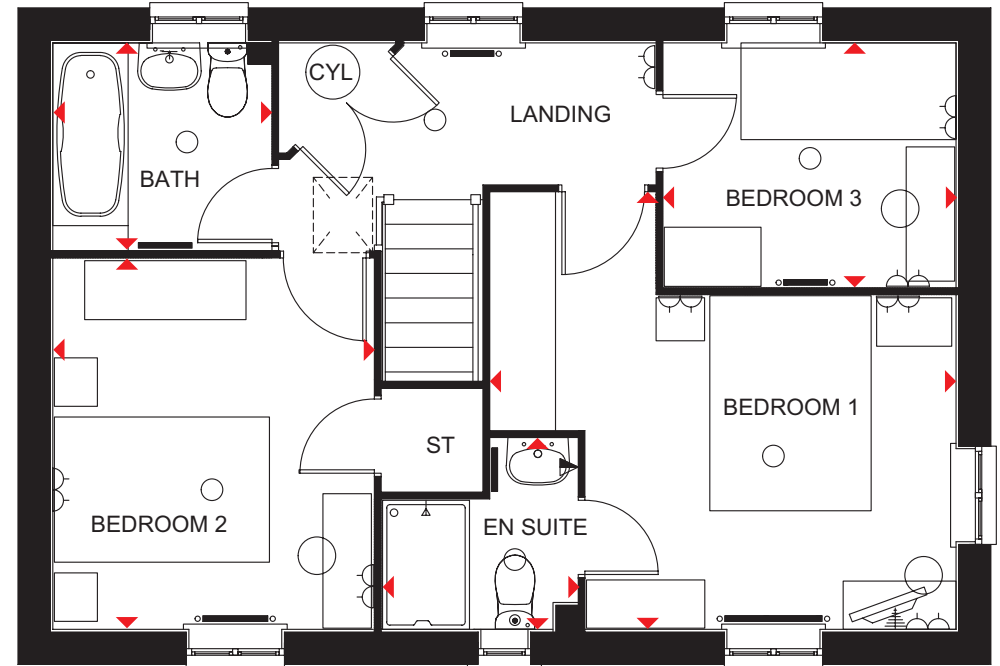
Key

- Light fitting
- ◀ Telephone outlet point
- ▣ Media plate
- Towel radiator
- ST Store
- f/f Fridge/freezer space
- dw Dishwasher space
- ◀▶ Dimension location
- ⊖ Electric socket
- ⚡ T.V. aerial socket
- Radiator
- B Boiler
- CYL Cylinder
- wm Washing machine space
- td Tumble dryer space



Ground Floor

Sitting	5455 x 3251 mm	17'11" x 10'6"
Kitchen/Family/Dining	5455 x 2917 mm	17'11" x 9'5"
Utility	1726 x 1688 mm	5'7" x 5'6"
WC	1484 x 923 mm	4'10" x 3'0"



First Floor

Bedroom 1	3438 x 3101 mm	11'3" x 10'2"
En suite	1806 x 1200 mm	5'11" x 3'11"
Bedroom 2	3441 x 2978 mm	11'3" x 9'9"
Bedroom 3	2713 x 2265 mm	8'11" x 7'5"
Bath	2025 x 1925 mm	6'8" x 6'3"

Floor plans are intended to give a general indication of the proposed floor layout only. Dimensions are accurate to within + or - 50mm but should not be used for carpet or flooring sizes, appliance spaces or items of furniture. Please ask our Sales Adviser for details of the treatments specified for individual plots. Individual features such as windows, brick and other materials' colours may vary, as may drainage, heating and electrical layouts. Images, photographs and dimensions are not intended to form part of any contract or warranty unless specifically incorporated in writing into the contract. P341 09WD



THE GREENWOOD

THREE BEDROOM HOME



Individual plots may vary, please speak to the Sales Adviser

The outstanding feature of this 2½ storey, three bedroom family home is the combined kitchen, dining room and family area located on the ground floor. This open-plan space is bright and airy by design, with a glazed bay that brings natural light into the

room. Downstairs also offers a handy study and a utility room. A first floor sitting room provides a relaxing retreat, as does the master bedroom with en suite shower room. The second floor features two further double bedrooms and a family bathroom.



DAVID WILSON HOMES

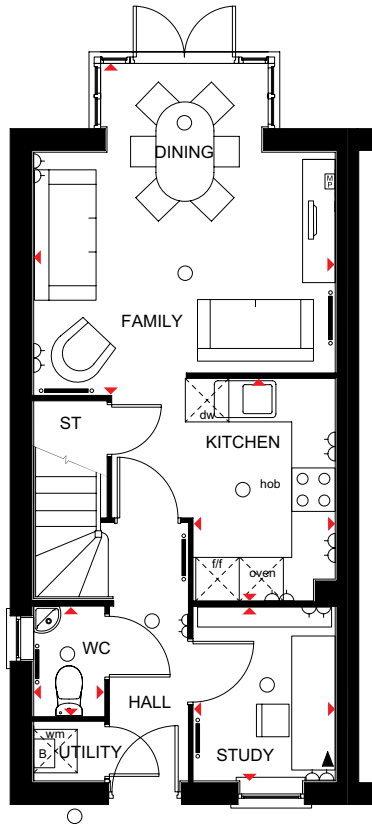
WHERE QUALITY LIVES

THE GREENWOOD

THREE BEDROOM HOME

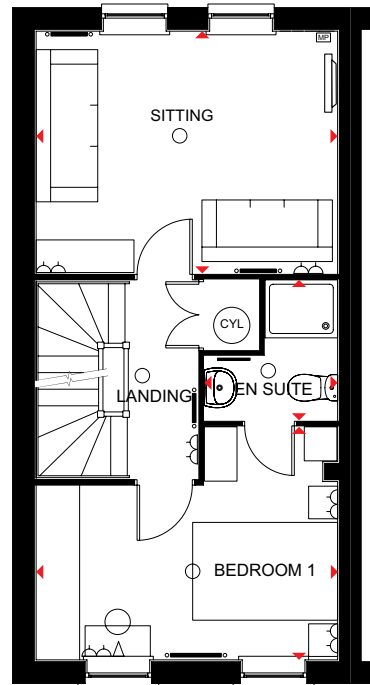
Key

○ Light fitting	◀ Telephone outlet point	▣ Media plate	— Towel radiator	ST Store	f/f Fridge/freezer space	dw Dishwasher space
⏏ Electric socket	◁ T.V. aerial socket	— Radiator	B Boiler	CYL Cylinder	wm Washing machine space	◀▶ Dimension location



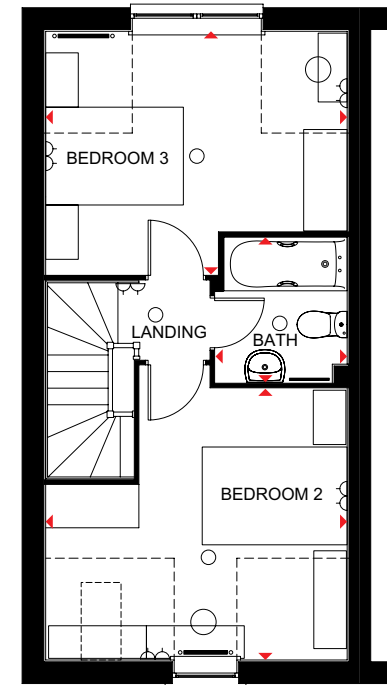
Ground Floor

Family/Dining	4170 x 4569 mm	13'8" x 15'0"
Kitchen	3070 x 1959 mm	10'0" x 6'5"
Study	2396 x 1959 mm	7'10" x 6'5"
WC	1500 x 968 mm	4'11" x 3'2"



First Floor

Sitting	4170 x 3344 mm	13'8" x 11'0"
Bedroom 1	4170 x 3217 mm	13'8" x 10'7"
En suite	1848 x 1939 mm	6'1" x 6'4"



Second Floor

Bedroom 2	4170 x 3744* mm	13'8" x 12'3"
Bedroom 3	4170 x 3356* mm	13'8" x 11'0"
Bath	2000 x 1826 mm	6'7" x 6'0"

*Overall floor dimension includes lowered ceiling areas

Floor plans are intended to give a general indication of the proposed floor layout only. Dimensions are accurate to within + or - 50mm but should not be used for carpet or flooring sizes, appliance spaces or items of furniture. Please ask our Sales Adviser for details of the treatments specified for individual plots. Individual features such as windows, brick and other materials' colours may vary, as may drainage, heating and electrical layouts. Images, photographs and dimensions are not intended to form part of any contract or warranty unless specifically incorporated in writing into the contract. T322-E-5 VA01/WV01



THE MEAFORD

FOUR BEDROOM HOME



Individual plots may vary, please speak to the Sales Adviser



This four bedroom home offers spacious living set over three floors. The kitchen is located at the front of the property whilst the sitting/dining room sits at the rear and enjoys access to the garden via French

doors. Upstairs there are three double bedrooms, two with en suite shower room, a single bedroom and a family bathroom.



DAVID WILSON HOMES

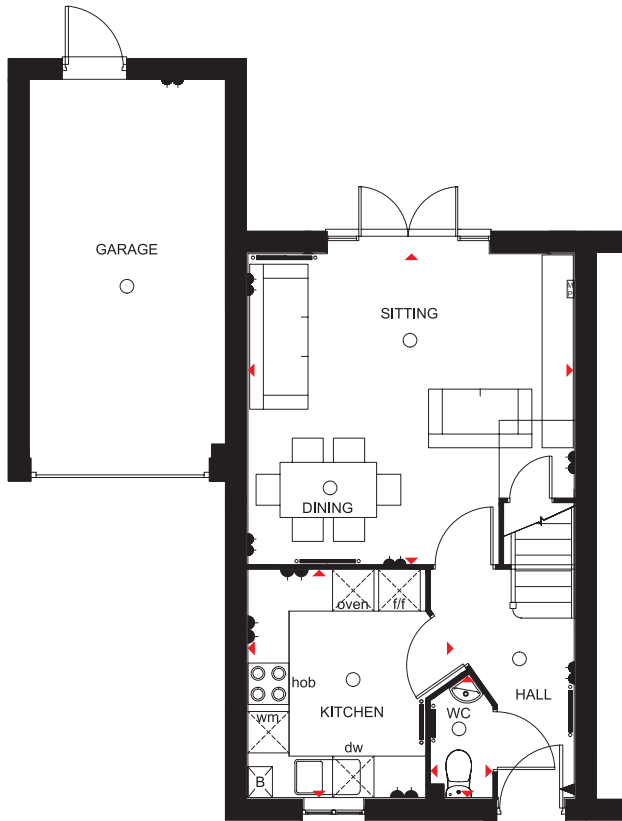
WHERE QUALITY LIVES

THE MEAFORD

FOUR BEDROOM HOME

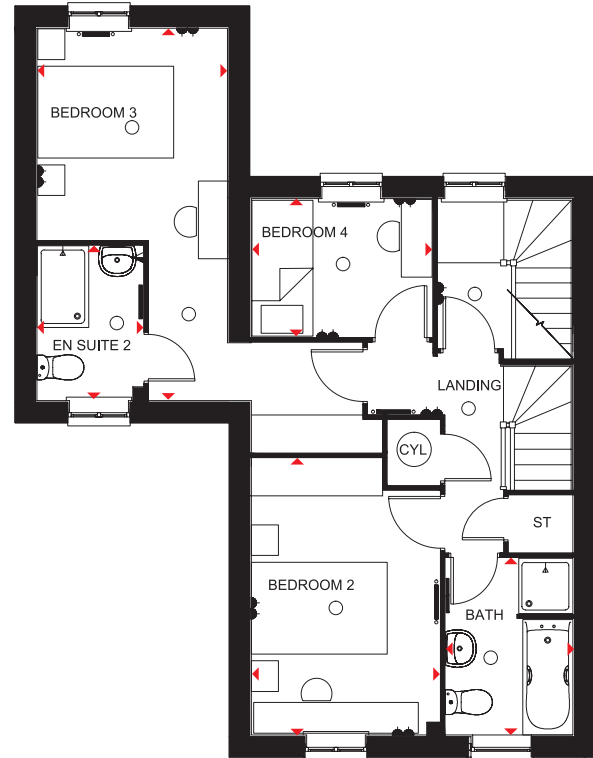
Key

- Light fitting
- ◀ Telephone outlet point
- ▣ Media plate
- Towel radiator
- ST Store
- f/f Fridge/freezer space
- dw Dishwasher space
- ◀ Electric socket
- ⚡ T.V. aerial socket
- Radiator
- B Boiler
- CYL Cylinder
- wm Washing machine space
- ◀ Dimension location



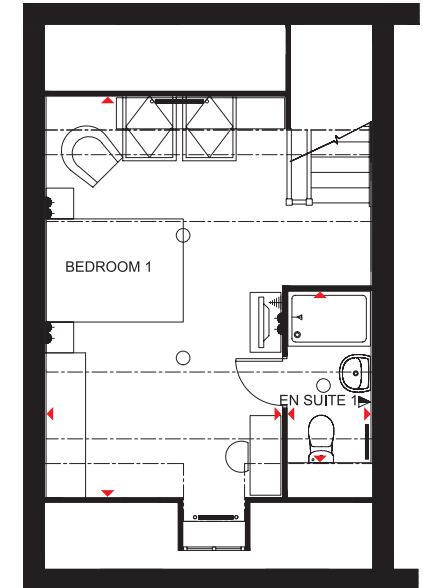
Ground Floor

Sitting/Dining	4733 x 4497 mm	15'6" x 14'9"
Kitchen	3304 x 2570 mm	10'10" x 8'5"
WC	1795 x 836 mm	5'11" x 2'9"



First Floor

Bedroom 2	2769 x 4067 mm	9'1" x 13'4"
Bedroom 4	2659 x 2032 mm	8'9" x 6'8"
Bedroom 3	5478 x 2800 mm	17'11" x 9'2"
En suite 2	2276 x 1563 mm	7'5" x 5'1"
Bathroom	1887 x 2589 mm	6'2" x 8'6"



Second Floor

Bedroom 1	5830 x 3434 * mm	19'2" x 11'4" *
En suite 1	1200 x 2496 * mm	3'9" x 8'1" *

*Overall floor dimension includes lowered ceiling areas

Floor plans are intended to give a general indication of the proposed floor layout only. Dimensions are accurate to within + or - 50mm but should not be used for carpet or flooring sizes, appliance spaces or items of furniture. Please ask our Sales Adviser for details of the treatments specified for individual plots. Individual features such as windows, brick and other materials' colours may vary, as may drainage, heating and electrical layouts. Images, photographs and dimensions are not intended to form part of any contract or warranty unless specifically incorporated in writing into the contract. T307 09VB



THE HOLDEN

FOUR BEDROOM HOME



Individual plots may vary, please speak to the Sales Adviser

This stylish home has no shortage of space and light. The bright, modern kitchen has been designed with integrated dining and family areas, full-height glazed bay with French doors leading to the garden and an adjoining utility room – making it the true heart of the home. A generously proportioned sitting room with

elegant bay window provides a perfect place to relax while a study offers a handy work space. Upstairs a large master bedroom with en suite shower room is located at the front of the house and there are two further double bedrooms, a single bedroom and a family bathroom with bath and separate shower.



DAVID WILSON HOMES

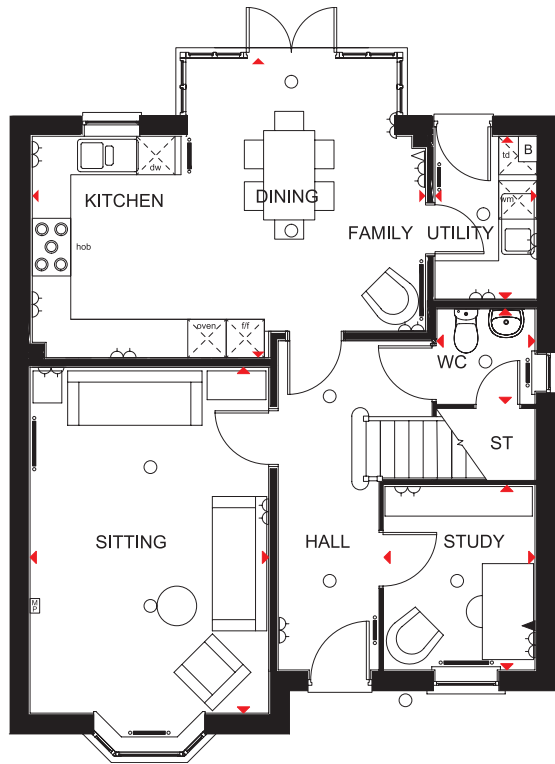
WHERE QUALITY LIVES

THE HOLDEN

FOUR BEDROOM HOME

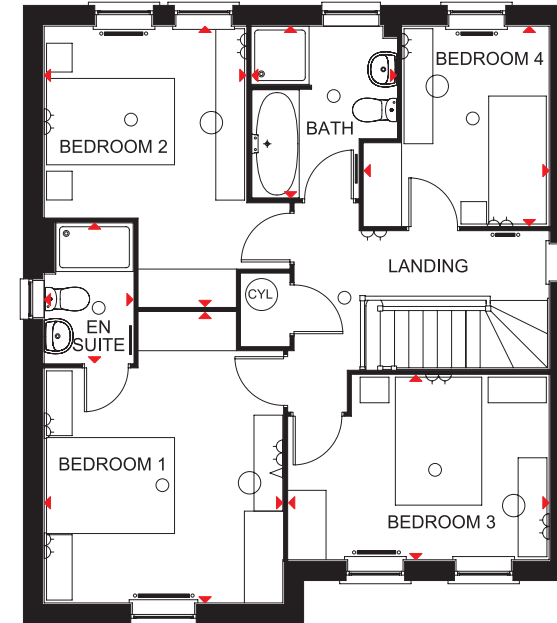
Key

○ Light fitting	△ T.V. aerial socket	— Towel radiator	CYL Cylinder	dw Dishwasher space
◁ Electric socket	▢ Media plate	B Boiler	f/f Fridge/freezer space	td Tumble dryer space
◀ Telephone outlet point	— Radiator	ST Store	wm Washing machine space	◀ Dimension location



Ground Floor

Sitting	5405 x 3728 mm	17'9" x 12'3"
Kitchen/Family/Dining	6147 x 4685 mm	20'2" x 15'4"
Study	2886 x 2361 mm	9'6" x 7'9"
Utility	2545 x 1593 mm	8'4" x 5'3"
WC	1593 x 1481 mm	5'3" x 4'10"



First Floor

Bedroom 1	4543 x 3728 mm	14'11" x 12'3"
En suite	2190 x 1390 mm	7'2" x 4'7"
Bedroom 2	4384 x 3103 mm	14'5" x 10'2"
Bedroom 3	4073 x 2886 mm	13'4" x 9'6"
Bedroom 4	3120 x 2893 mm	10'3" x 9'6"
Bath	2689 x 2316 mm	8'10" x 7'7"

Floor plans are intended to give a general indication of the proposed floor layout only. Dimensions are accurate to within + or - 50mm but should not be used for carpet or flooring sizes, appliance spaces or items of furniture. Please ask our Sales Adviser for details of the treatments specified for individual plots. Individual features such as windows, brick and other materials' colours may vary, as may drainage, heating and electrical layouts. Images, photographs and dimensions are not intended to form part of any contract or warranty unless specifically incorporated in writing into the contract. H469 09VR/09VB



THE ASHTREE

FOUR BEDROOM DETACHED HOME



Individual plots may vary, please speak to the Sales Adviser

The Ashtree is an exciting four bedroom family home that caters for all members of the family. The ground floor boasts a beautiful bay-fronted, dual-aspect sitting room that opens onto the garden via French doors. The kitchen also features its own set of French doors and breakfast area while the generous dining area

comes with a bay window. Upstairs three comfortable double bedrooms make relaxing hideaways, the master benefiting from an en suite shower room. There is also a single bedroom and a family bathroom.



DAVID WILSON HOMES

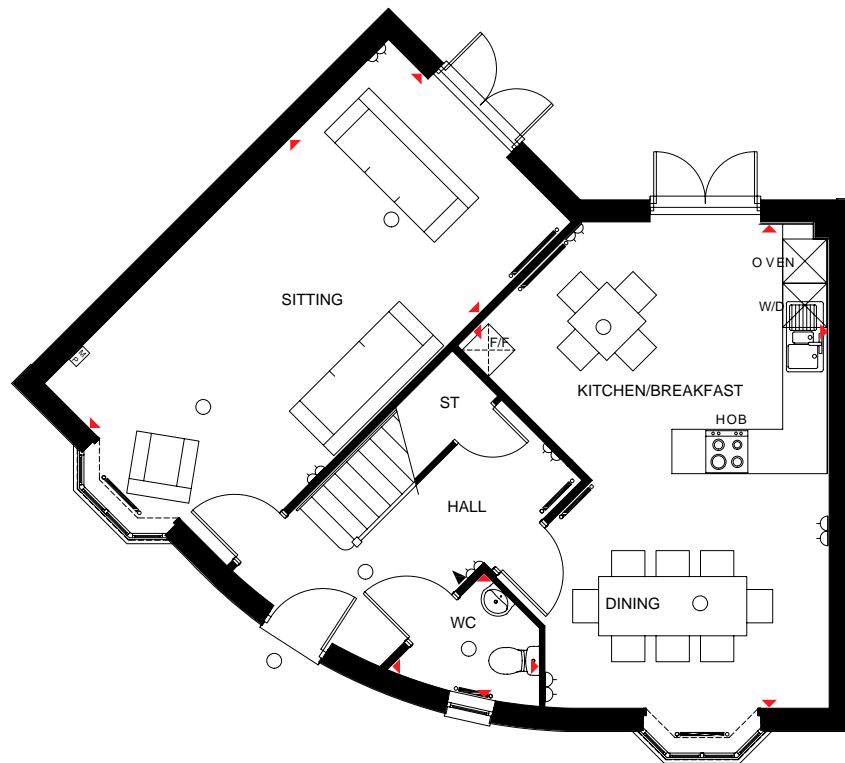
WHERE QUALITY LIVES

THE ASHTREE

FOUR BEDROOM DETACHED HOME

Key

○ Light fitting	Media plate	T.V. aerial socket	Radiator	ST Store	f/f Fridge/freezer space	◀▶ Dimension location
⏏ Electric socket	Telephone outlet point	Shaver socket	B Boiler	CYL Cylinder	w/d Washer/dryer space	



Ground Floor

Sitting	3445 x 6540 mm	11'3" x 21'4"
Kitchen/Breakfast/Dining	6565 x 4981 mm	21'5" x 16'3"
WC	2031 x 1769 mm	6'6" x 5'8"



First Floor

Bedroom 1	3410 x 4475 mm	11'2" x 14'7"
En suite	2560 x 1360 mm	8'4" x 4'5"
Bedroom 2	3506 x 3810 mm	11'5" x 12'5"
Bedroom 3	4522 x 3725 mm	14'8" x 12'2"
Bedroom 4	2625 x 2360 mm	8'6" x 7'7"
Bath	2387 x 1960 mm	7'8" x 6'4"

PLEASE NOTE THAT PLOTS 91, 92, 151 & 156 WILL HAVE CHARTWELL GREEN WINDOWS. PLEASE REFER TO THE MATERIALS LAYOUT AND ASK THE SALES ADVISER FOR FURTHER INFORMATION.

Floor plans are intended to give a general indication of the proposed floor layout only. Dimensions are accurate to within + or - 50mm but should not be used for carpet or flooring sizes, appliance spaces or items of furniture. Please ask our Sales Adviser for details of the treatments specified for individual plots. Individual features such as windows, brick and other materials' colours may vary, as may drainage, heating and electrical layouts. Images, photographs and dimensions are not intended to form part of any contract or warranty unless specifically incorporated in writing into the contract. H455 09VR/09VB



THE FLEETWOOD

FOUR BEDROOM DETACHED HOME



Individual plots may vary, please speak to the Sales Adviser



Cleverly designed over three floors, this four bedroom home boasts a quality kitchen leading to the family/dining area, which opens out onto the rear garden through French doors. On the first floor the sitting room opens onto its own

beautiful roof terrace, plus there's a double bedroom with a dual-access en suite shower room. Three further bedrooms, the master bedroom with its own en suite shower room, and a family bathroom are located on the second floor.



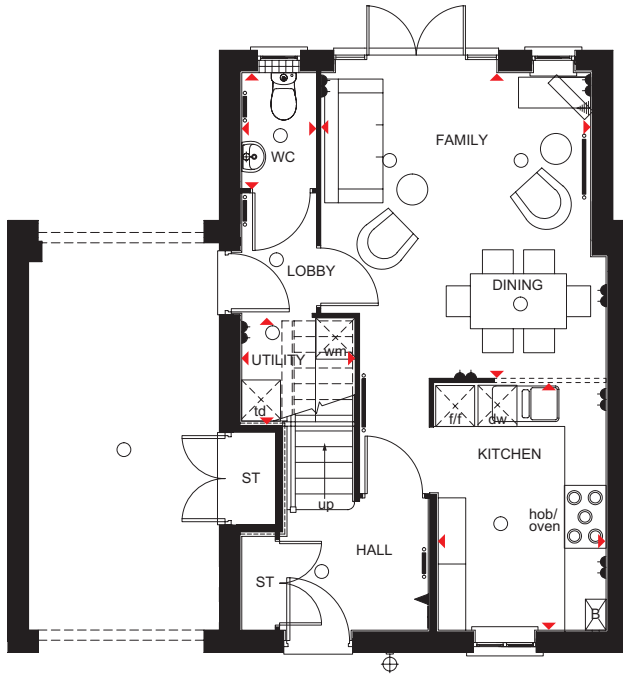
DAVID WILSON HOMES
WHERE QUALITY LIVES

THE FLEETWOOD

FOUR BEDROOM DETACHED HOME

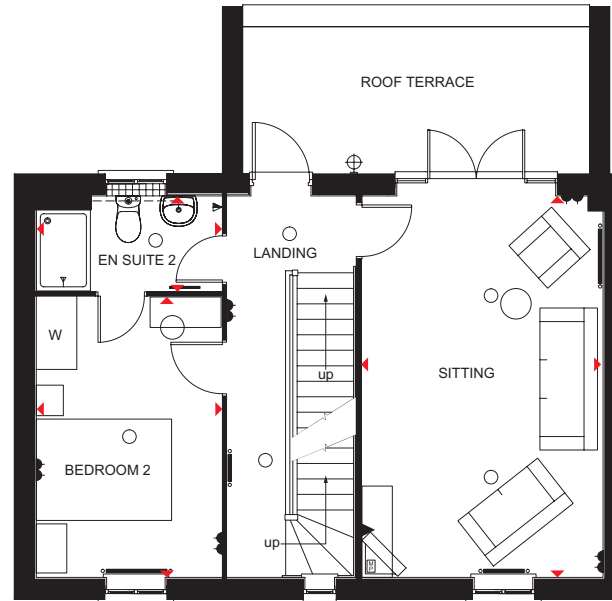
Key

- Light fitting
- ◀ Telephone outlet point
- ▣ Media plate
- Radiator
- B Boiler
- CYL Cylinder
- f/f Fridge/freezer space
- td Tumble dryer space
- ◀ Electric socket
- ◀ T.V. aerial socket
- ◀ Shaver socket
- Towel radiator
- ST Store
- wm Washing machine space
- dw Dishwasher space
- ◀ Dimension location



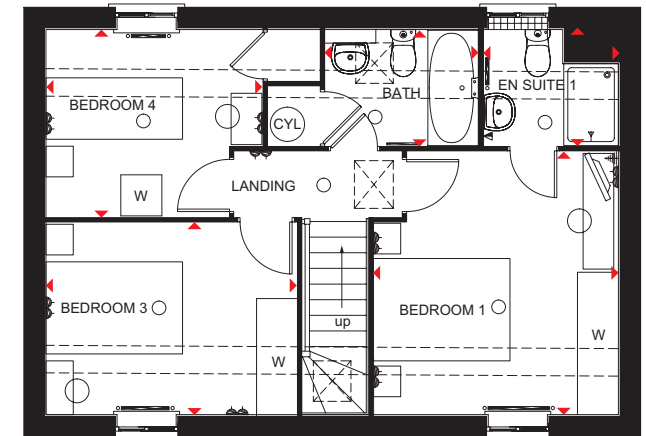
Ground Floor

Kitchen	3590 x 2443 mm	11'9" x 8'0"
Family/Dining	4436 x 3914 mm	14'7" x 12'10"
Utility	1640 x 1491 mm	5'5" x 4'11"
WC	1675 x 1075 mm	5'6" x 3'6"



First Floor

Sitting	5640 x 3552 mm	18'6" x 11'8"
Bedroom 2	4146 x 2738 mm	13'7" x 9'0"
En suite 2	1405 x 2738 mm	4'7" x 9'0"



Second Floor

Bedroom 1	4101 x 3574 mm	13'5" x 11'9"*
En suite 1	1450 x 1961 mm	4'9" x 6'5"*
Bedroom 3	3668 x 2810 mm	12'0" x 9'3"*
Bedroom 4	2741 x 3165 mm	9'0" x 10'5"*
Bath	1700 x 3076 mm	5'7" x 10'1"*

* Overall floor dimension includes lowered ceiling areas

Floor plans are intended to give a general indication of the proposed floor layout only. Dimensions are accurate to within + or - 50mm but should not be used for carpet or flooring sizes, appliance spaces or items of furniture. Please ask our Sales Adviser for details of the treatments specified for individual plots. Individual features such as windows, brick and other materials' colours may vary, as may drainage, heating and electrical layouts. Images, photographs and dimensions are not intended to form part of any contract or warranty unless specifically incorporated in writing into the contract. T445 09VB



THE HERTFORD

FOUR BEDROOM HOME



Individual plots may vary, please speak to the Sales Adviser



With flowing spaces set over three floors, tied together by a consistently stylish design, the Hertford is a beautiful family home. The bright and airy open-plan dining room and kitchen features a separate utility room and French doors that open onto the garden, whilst the sitting room boasts two bay windows. The first

floor offers a master bedroom with en suite and dressing area, another double bedroom and a family bathroom. One further double bedroom, a single bedroom and a handy shower room complete this home.



DAVID WILSON HOMES

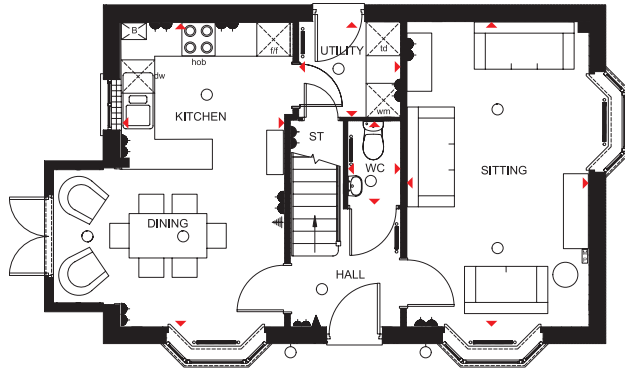
WHERE QUALITY LIVES

THE HERTFORD

FOUR BEDROOM HOME

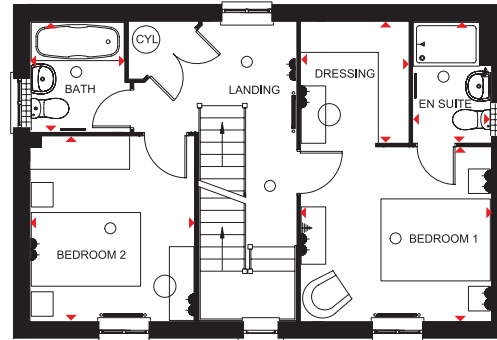
Key

○ Light fitting	⚡ T.V. aerial socket	— Radiator	ST Store	wm Washing machine space	◀▶ Dimension location
⚡ Electric socket	MP Media plate	— Towel radiator	CYL Cylinder	dw Dishwasher space	
◀ Telephone outlet point	◀ Shaver socket	B Boiler	f/f Fridge/freezer space	td Tumble dryer space	



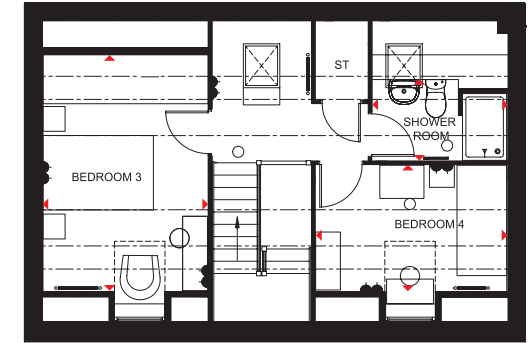
Ground Floor

Sitting	5455 x 3242 mm	17'11" x 10'8"
Kitchen/Dining	5455 x 2917 mm	17'11" x 9'7"
Utility	1791 x 1687 mm	5'11" x 5'6"
WC	1500 x 920 mm	4'11" x 3'0"



First Floor

Bedroom 1	3462 x 3166 mm	11'4" x 10'4"
En suite	2200 x 1410 mm	7'3" x 4'8"
Dressing	2200 x 1963 mm	7'3" x 6'5"
Bedroom 2	3366 x 2978 mm	11'1" x 9'9"
Bath	2000 x 1700 mm	6'7" x 5'7"



Second Floor

Bedroom 3	4277 x 2978* mm	14'0" x 9'9"*
Bedroom 4	3462 x 2274* mm	11'4" x 7'6"*
Shower room	2432 x 1464* mm	8'0" x 4'10"

*Overall floor dimension includes lowered ceiling areas

Floor plans are intended to give a general indication of the proposed floor layout only. Dimensions are accurate to within + or - 50mm but should not be used for carpet or flooring sizes, appliance spaces or items of furniture. Please ask our Sales Adviser for details of the treatments specified for individual plots. Individual features such as windows, brick and other materials' colours may vary, as may drainage, heating and electrical layouts. Images, photographs and dimensions are not intended to form part of any contract or warranty unless specifically incorporated in writing into the contract. H470 09VR/09VB

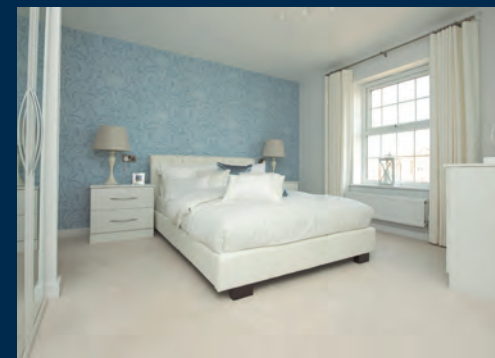


THE HURST

FOUR BEDROOM HOME



Individual plots may vary, please speak to the Sales Adviser



This impressive four bedroom home offers free-flowing living space for all your family. The kitchen features dining and family areas, as well as French doors that lead to the rear garden. A bay-fronted sitting room is also

presented on the ground floor. Upstairs, the luxurious master bedroom with en suite shower room makes the perfect haven, accompanying two further double bedrooms, a single bedroom and a family bathroom.



DAVID WILSON HOMES

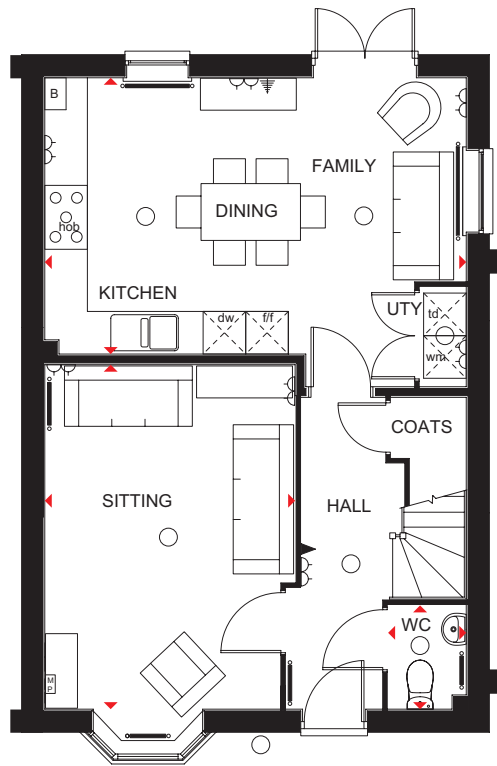
WHERE QUALITY LIVES

THE HURST

FOUR BEDROOM HOME

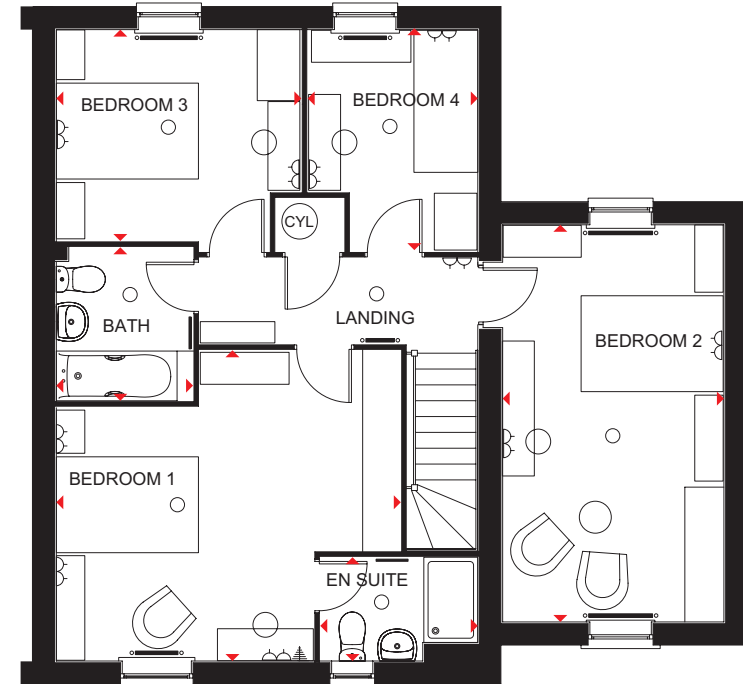
Key

- Light fitting
- ◀ Telephone outlet point
- ▣ Media plate
- Towel radiator
- CYL Cylinder
- wm Washing machine space
- td Tumble dryer space
- ◁ Electric socket
- ⚡ T.V. aerial socket
- Radiator
- B Boiler
- f/f Fridge/freezer space
- dw Dishwasher space
- ◄ Dimension location



Ground Floor

Sitting	3525 x 4850 mm	11'7" x 15'11"
Kitchen/Family/Dining	5934 x 3890 mm	19'6" x 12'9"
WC	1461 x 1100 mm	4'10" x 3'7"



First Floor

Bedroom 1	4850 x 4375 mm	15'11" x 14'4"
En suite 1	1461 x 2218 mm	4'10" x 7'3"
Bedroom 2	5592 x 3115 mm	18'4" x 10'3"
Bedroom 3	3450 x 2976 mm	11'4" x 9'9"
Bedroom 4	3125 x 2395 mm	10'3" x 7'10"
Bathroom	2161 x 1925 mm	7'1" x 6'4"

Floor plans are intended to give a general indication of the proposed floor layout only. Dimensions are accurate to within + or - 50mm but should not be used for carpet or flooring sizes, appliance spaces or items of furniture. Please ask our Sales Adviser for details of the treatments specified for individual plots. Individual features such as windows, brick and other materials' colours may vary, as may drainage, heating and electrical layouts. Images, photographs and dimensions are not intended to form part of any contract or warranty unless specifically incorporated in writing into the contract. H451 09VB

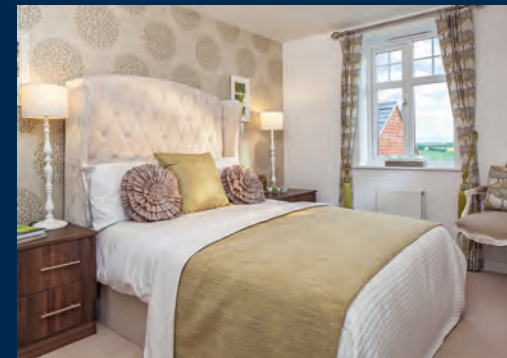


THE LUXFORD

FOUR BEDROOM DETACHED HOME



Individual plots may vary, please speak to the Sales Adviser



The Luxford is an exceptional three-storey home featuring a free-flowing family/dining room with double doors leading into an open-plan kitchen/breakfast room. Both rooms benefit from French doors opening onto the rear garden. The spacious sitting room with access to the impressive roof terrace is located on the

first floor, along with a double bedroom and en suite shower room that can also be accessed from the landing. Three further double bedrooms, en suite shower room and family bathroom can be found on the second floor.



DAVID WILSON HOMES

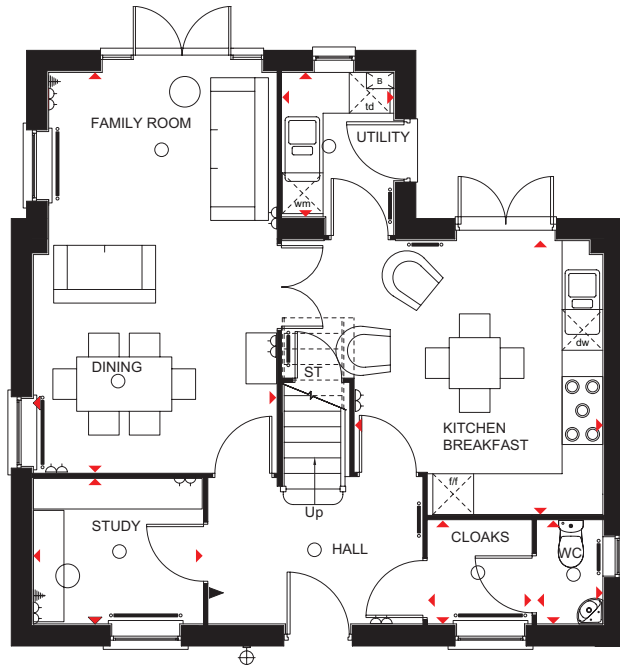
WHERE QUALITY LIVES

THE LUXFORD

FOUR BEDROOM DETACHED HOME

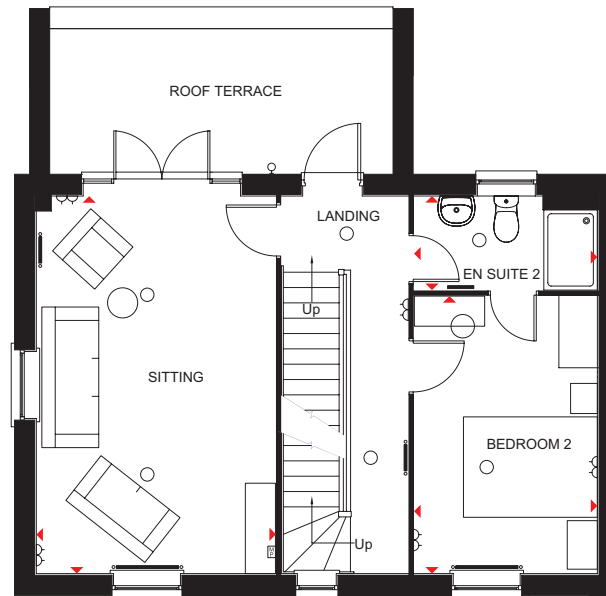
Key

- Light fitting
- ◀ Telephone outlet point
- ▣ Media plate
- Towel radiator
- ST Store
- f/f Fridge/freezer space
- dw Dishwasher space
- ◀▶ Dimension location
- ⊖ Electric socket
- ◀ T.V. aerial socket
- Radiator
- B Boiler
- CYL Cylinder
- wm Washing machine space
- td Tumble dryer space



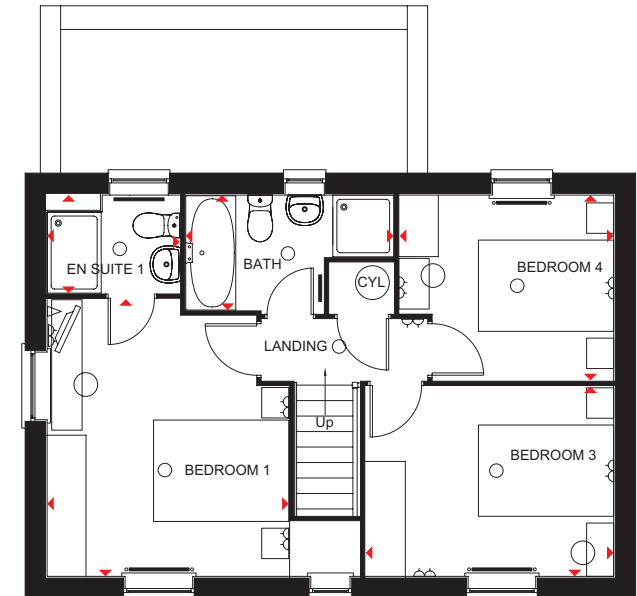
Ground Floor

Family/Dining	5885 x 3574 mm	19'4" x 11'9"
Kitchen/Breakfast	4030 x 3648 mm	13'3" x 12'0"
Utility	2125 x 1640 mm	7'0" x 5'5"
Study	2491 x 2141 mm	8'2" x 7'0"
Cloaks	1521 x 1519 mm	5'0" x 5'0"
WC	1521 x 965 mm	5'0" x 3'2"



First Floor

Sitting	5640 x 3572 mm	18'6" x 11'9"
Bedroom 2	4146 x 2738 mm	13'7" x 9'0"
En suite 2	1405 x 2738 mm	4'7" x 9'0"



Second Floor

Bedroom 1	4101 x 3574 mm	13'5" x 11'9"
En suite 1	1450 x 1961 mm	4'9" x 6'5"
Bedroom 3	3668 x 2810 mm	12'0" x 9'3"
Bedroom 4	2741 x 3165 mm	9'0" x 10'5"
Bath	1700 x 3076 mm	5'7" x 10'1"

Floor plans are intended to give a general indication of the proposed floor layout only. Dimensions are accurate to within + or - 50mm but should not be used for carpet or flooring sizes, appliance spaces or items of furniture. Please ask our Sales Adviser for details of the treatments specified for individual plots. Individual features such as windows, brick and other materials' colours may vary, as may drainage, heating and electrical layouts. Images, photographs and dimensions are not intended to form part of any contract or warranty unless specifically incorporated in writing into the contract. H446 09VB



THE MITCHELL

FOUR BEDROOM HOME



Individual plots may vary, please speak to the Sales Adviser



This impressive four bedroom family home enjoys all the space available. The quality kitchen with dining and family areas opens out onto the rear garden, as does the bay fronted sitting room. Downstairs also

features a utility room. Upstairs has three double bedrooms, including master bedroom with en suite shower room. A single bedroom and a family bathroom complete this home.



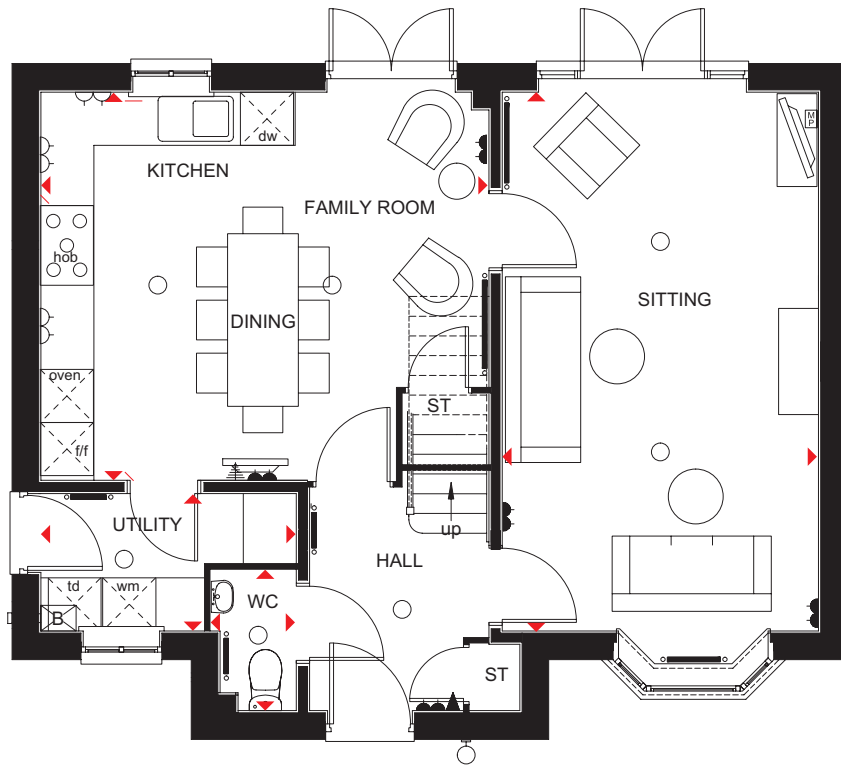
DAVID WILSON HOMES
WHERE QUALITY LIVES

THE MITCHELL

FOUR BEDROOM HOME

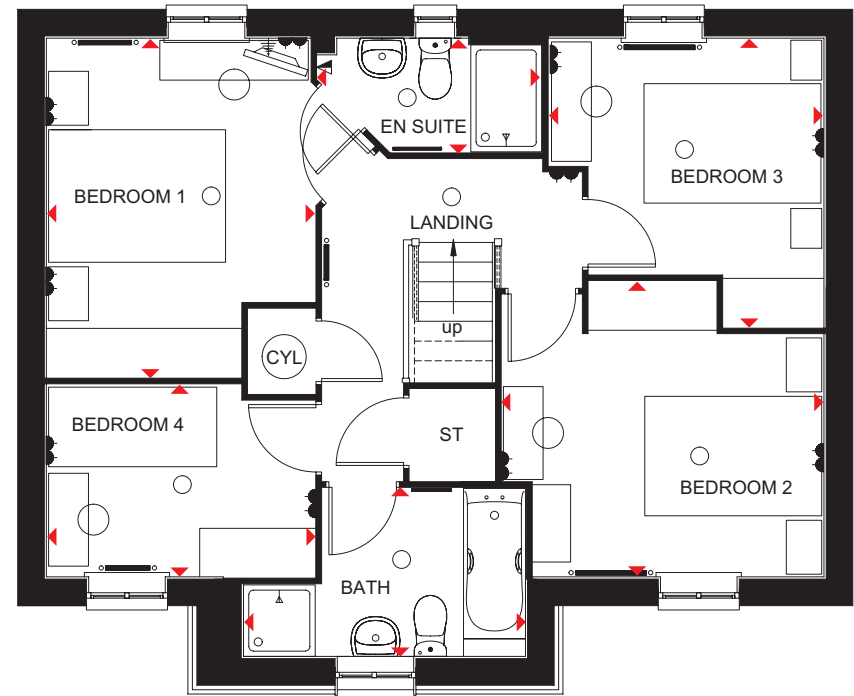
Key

○ Light fitting	⚡ T.V. aerial socket	— Radiator	ST Store	wm Washing machine space	◀▶ Dimension location
⚡ Electric socket	📺 Media plate	— Towel radiator	CYL Cylinder	dw Dishwasher space	
⚡ Telephone outlet point	⚡ Shaver socket	B Boiler	f/f Fridge/freezer space	td Tumble dryer space	



Ground Floor

Sitting	3575 x 6090 mm	11'9" x 20'0"
Kitchen/Family/Dining	5065 x 4388 mm	16'7" x 14'5"
Utility	1552 x 2888 mm	5'1" x 9'6"
WC	1585 x 863 mm	5'2" x 2'10"



First Floor

Bedroom 1	3831 x 3035 mm	12'7" x 9'11"
En suite	1210 x 2529 mm	4'0" x 8'4"
Bedroom 2	3337 x 3636 mm	10'11" x 11'11"
Bedroom 3	3265 x 3105 mm	10'9" x 10'2"
Bedroom 4	3035 x 2170 mm	9'11" x 7'1"
Bath	1900 x 3187 mm	6'3" x 10'5"

Floor plans are intended to give a general indication of the proposed floor layout only. Dimensions are accurate to within + or - 50mm but should not be used for carpet or flooring sizes, appliance spaces or items of furniture. Please ask our Sales Adviser for details of the treatments specified for individual plots. Individual features such as windows, brick and other materials' colours may vary, as may drainage, heating and electrical layouts. Images, photographs and dimensions are not intended to form part of any contract or warranty unless specifically incorporated in writing into the contract. H452 09VT



THE SHENTON

FOUR BEDROOM HOME



Individual plots may vary, please speak to the Sales Adviser



A generous entrance hall leads to the heart of this stylish four bedroom home – the bright, airy kitchen boasting family and dining areas. Opening onto the rear garden through French doors, it's a great space for entertaining. Downstairs

also offers a bay-fronted sitting room and a utility room. Upstairs, the delightful master bedroom benefits from an en suite shower room. Two further double bedrooms, a single bedroom and a family bathroom complete this lovely home.



DAVID WILSON HOMES

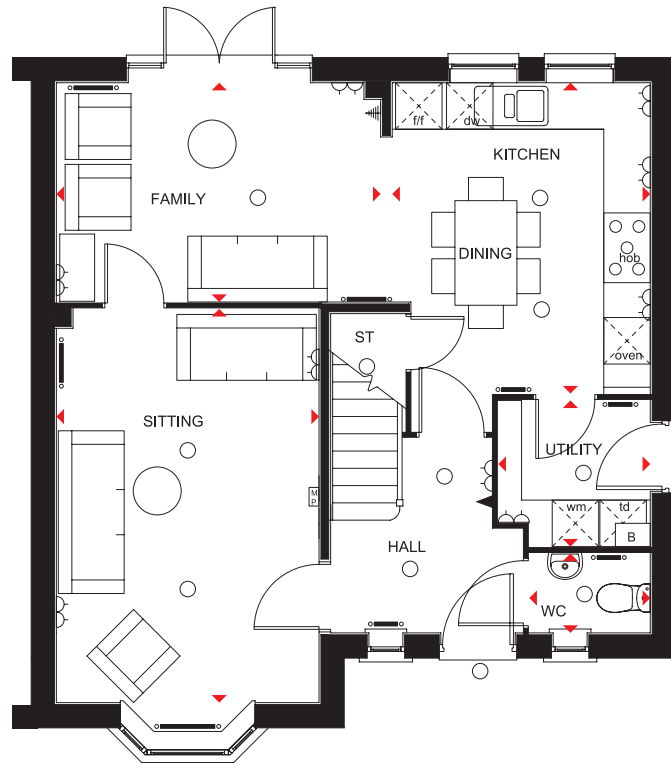
WHERE QUALITY LIVES

THE SHENTON

FOUR BEDROOM HOME

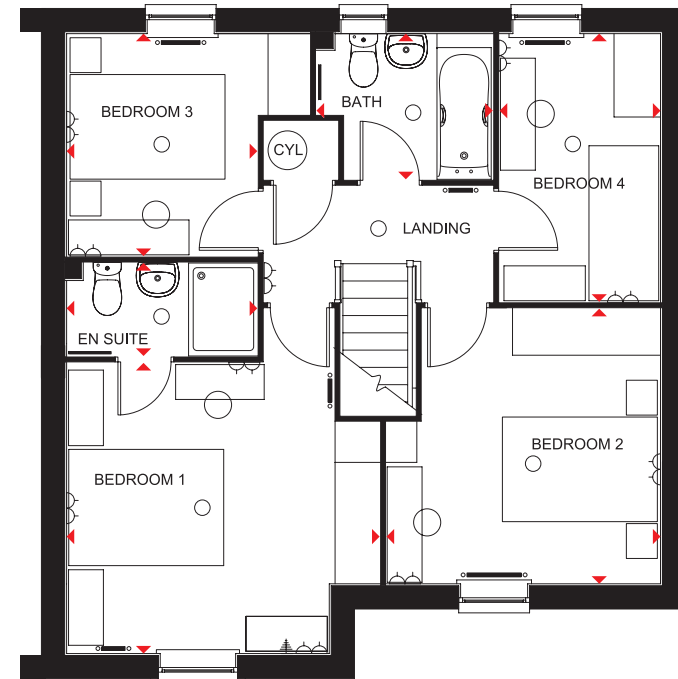
Key

- Light fitting
- ◀ Telephone outlet point
- ▣ Media plate
- Towel radiator
- ST Store
- f/f Fridge/freezer space
- dw Dishwasher space
- ◀ Dimension location
- ◁ Electric socket
- ◀ T.V. aerial socket
- Radiator
- B Boiler
- CYL Cylinder
- wm Washing machine space
- td Tumble dryer space



Ground Floor

Sitting	3390 x 5082 mm	11'1" x 16'8"
Family	4185 x 2830 mm	13'9" x 9'3"
Kitchen/Dining	4011 x 3330 mm	13'2" x 10'11"
Utility	1961 x 1886 mm	6'5" x 6'2"
WC	1561 x 1025 mm	5'1" x 3'4"



First Floor

Bedroom 1	3751 x 4040 mm	12'4" x 13'3"
En suite	1200 x 2461 mm	3'11" x 8'1"
Bedroom 2	3550 x 3536 mm	11'8" x 11'7"
Bedroom 3	2871 x 3136 mm	9'5" x 10'3"
Bedroom 4	3461 x 2076 mm	11'4" x 6'10"
Bath	2275 x 1880 mm	7'6" x 6'2"

Floor plans are intended to give a general indication of the proposed floor layout only. Dimensions are accurate to within + or - 50mm but should not be used for carpet or flooring sizes, appliance spaces or items of furniture. Please ask our Sales Adviser for details of the treatments specified for individual plots. Individual features such as windows, brick and other materials' colours may vary, as may drainage, heating and electrical layouts. Images, photographs and dimensions are not intended to form part of any contract or warranty unless specifically incorporated in writing into the contract.

HV31 09VS



THE MILLWOOD

FOUR BEDROOM HOME



Individual plots may vary, please speak to the Sales Adviser



This four bedroom home provides spacious accommodation spread over three floors. The open-plan sitting room and dining area is flooded with natural light thanks to a full-height glazed bay with French doors leading to the garden, whilst the separate

kitchen includes a breakfast area. On the first floor there are two large double bedrooms, a single bedroom and a family bathroom. On the second floor, the light and airy master bedroom benefits from an en suite shower room and dressing area.



DAVID WILSON HOMES

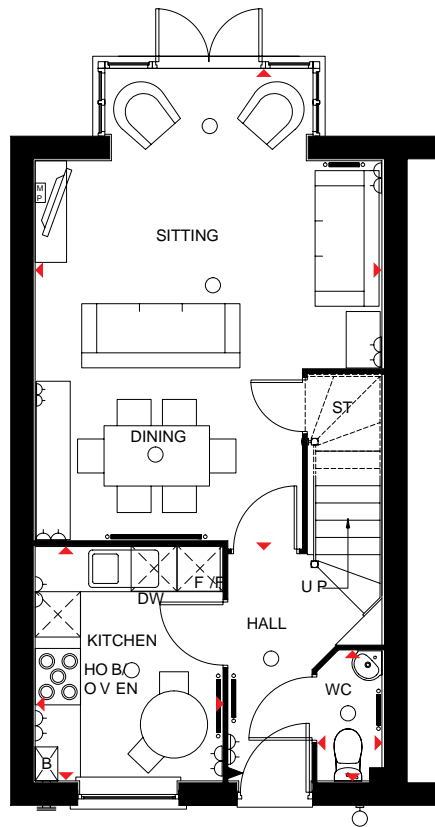
WHERE QUALITY LIVES

THE MILLWOOD

FOUR BEDROOM HOME

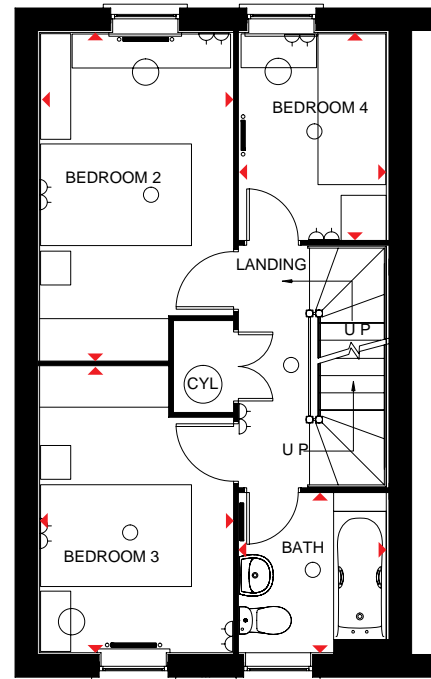
Key

- Light fitting
- ◻ Media plate
- ⏏ T.V. aerial socket
- Radiator
- B Boiler
- CYL Cylinder
- dw Dishwasher space
- ⏏ Electric socket
- ◻ Telephone outlet point
- ⏏ Shaver socket
- Towel radiator
- ST Store
- f/f Fridge/freezer space
- ◀▶ Dimension location



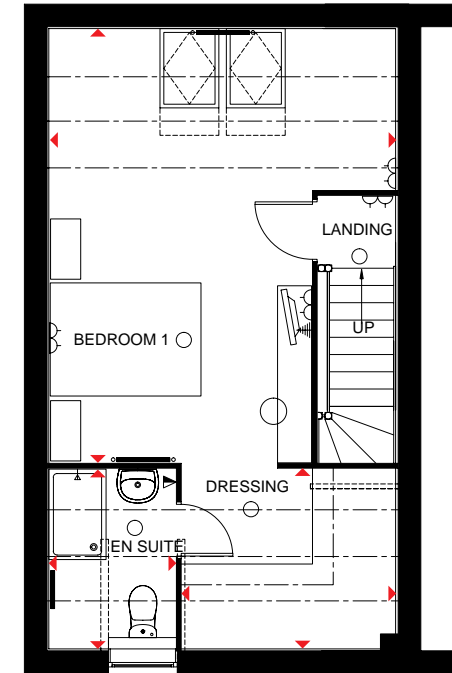
Ground Floor

Sitting/Dining	6254 x 4610 mm	20'6" x 15'1"
Kitchen	2480 x 3110 mm	8'2" x 10'2"
WC	1725 x 861 mm	5'8" x 2'10"



First Floor

Bedroom 2	4346 x 2561 mm	14'3" x 8'5"
Bedroom 3	2561 x 3793 mm	8'5" x 12'5"
Bedroom 4	2747 x 1960 mm	9'0" x 6'5"
Bath	2111 x 1960 mm	6'11" x 6'5"



Second Floor

Bedroom 1	5754* x 4610* mm	18'11"* x 15'1"*
Dressing	2841* x 2385* mm	9'4"* x 7'10"*
En suite	2385* x 1680* mm	7'10"* x 5'6"*

*Overall floor dimension includes lowered ceiling areas

PLEASE NOTE THAT PLOTS 152 & 155 ARE TERRACED. PLEASE REFER TO THE SITE LAYOUT AND ASK THE SALES ADVISER FOR FURTHER INFORMATION.

Floor plans are intended to give a general indication of the proposed floor layout only. Dimensions are accurate to within + or - 50mm but should not be used for carpet or flooring sizes, appliance spaces or items of furniture. Please ask our Sales Adviser for details of the treatments specified for individual plots. Individual features such as windows, brick and other materials' colours may vary, as may drainage, heating and electrical layouts. Images, photographs and dimensions are not intended to form part of any contract or warranty unless specifically incorporated in writing into the contract. T447-E-5 WV01



THE BURRINGTON

FOUR BEDROOM HOME



Individual plots may vary, please speak to the Sales Adviser



This four bedroom spacious family home is spread over three floors. The open-plan sitting and dining room is flooded with natural light thanks to a full-height glazed bay with French doors leading onto the garden, whilst the separate kitchen

includes a breakfast area. On the first floor there are three large double bedrooms, one with en suite shower room, and a family bathroom. Upstairs, the light and airy master bedroom features an en suite shower room and a dressing area.



DAVID WILSON HOMES

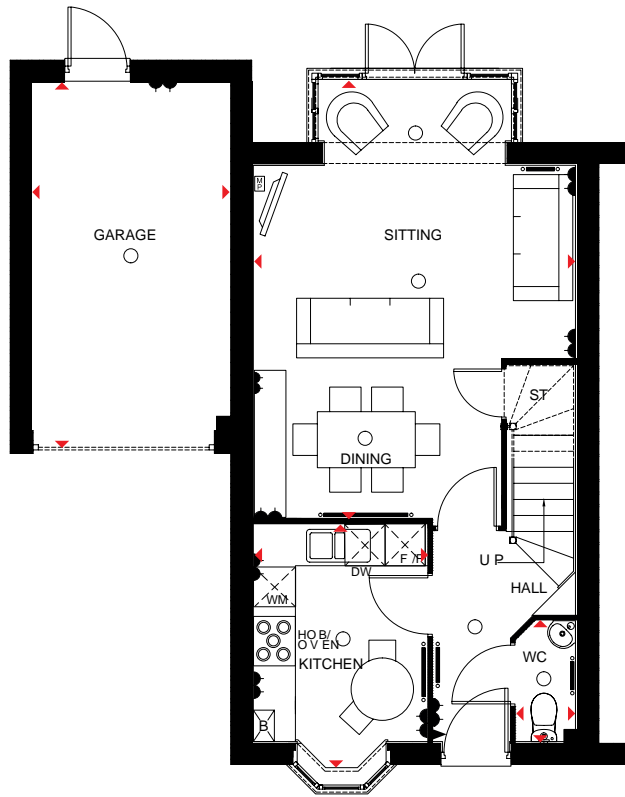
WHERE QUALITY LIVES

THE BARRINGTON

FOUR BEDROOM HOME

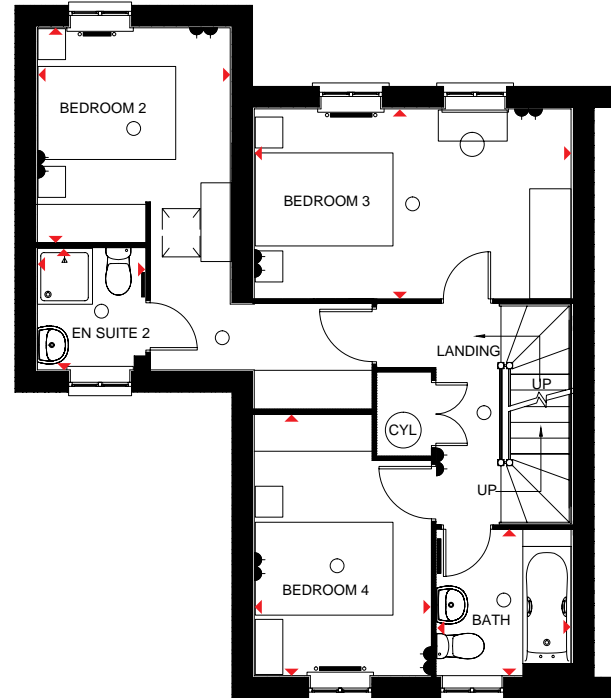
Key

○ Light fitting	△ T.V. aerial socket	— Radiator	ST Store	wm Washing machine space	RL Roof light
◀ Electric socket	▣ Media plate	— Towel radiator	CYL Cylinder	dw Dishwasher space	
◀ Telephone outlet point	◀ Shaver socket	B Boiler	f/f Fridge/freezer space	◀▶ Dimension location	



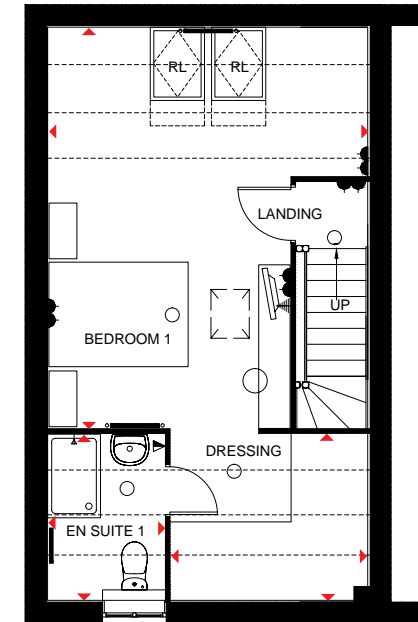
Ground Floor

Sitting/Dining	6254 x 4610 mm	20'6" x 15'1"
Kitchen	3507 x 2480 mm	11'6" x 8'2"
WC	1725 x 861 mm	5'8" x 2'10"



First Floor

Bedroom 2	5478 x 2800 mm max	17'10" x 9'2" max
En suite 2	2275 x 1560 mm	7'6" x 5'2"
Bedroom 3	4610 x 2747 mm	15'2" x 9'1"
Bedroom 4	3791 x 2561 mm	12'5" x 8'5"
Bath	2111 x 1960 mm	6'11" x 6'5"



Second Floor

Bedroom 1	5754* x 4610* mm	18'11"* x 15'11"*
En suite 1	2385* x 1680* mm	7'10"* x 5'6"*
Dressing	2841* x 2385* mm	9'4"* x 7'10"*

*Overall floor dimension includes lowered ceiling area

PLEASE NOTE THAT PLOTS 142, 143, 144, 153 & 154 ARE TERRACED. PLEASE REFER TO THE SITE PLAN AND ASK THE SALES ADVISER FOR FURTHER DETAILS.

Floor plans are intended to give a general indication of the proposed floor layout only. Dimensions are accurate to within + or - 50mm but should not be used for carpet or flooring sizes, appliance spaces or items of furniture. Please ask our Sales Adviser for details of the treatments specified for individual plots. Individual features such as windows, brick and other materials' colours may vary, as may drainage, heating and electrical layouts. Images, photographs and dimensions are not intended to form part of any contract or warranty unless specifically incorporated in writing into the contract.

T447 09VB



THE EMERSON

FIVE BEDROOM DETACHED HOME



Individual plots may vary, please speak to the Sales Adviser



This impressive two and a half storey, five bedroom home offers plenty of room for the whole family. Space and light are key features, with the open-plan kitchen and breakfast room incorporating an extra family area and a utility room. This same generosity can be seen in the dual-aspect sitting room, which features a bay window and

opens into the rear garden via French doors. Downstairs also benefits from a separate dining room. On the first floor are three beautifully presented double bedrooms, the master with a dressing area and en suite shower room, plus a family bathroom. The second floor offers a further double bedroom, a single bedroom and a shower room.



DAVID WILSON HOMES

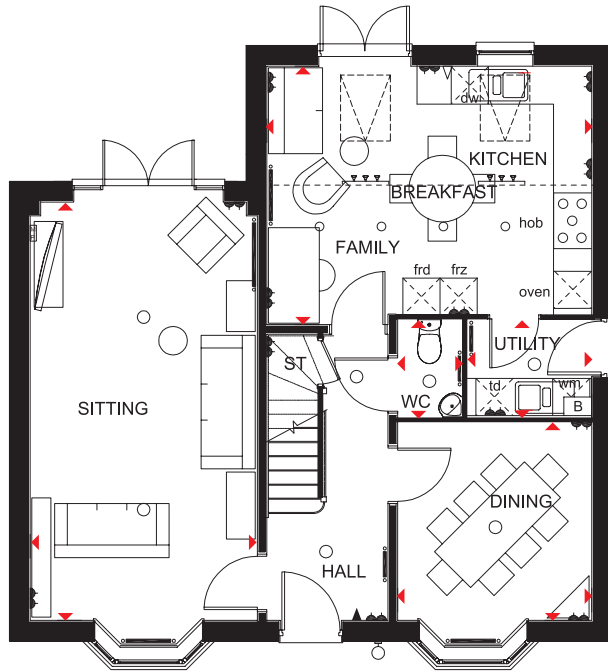
WHERE QUALITY LIVES

THE EMERSON

FIVE BEDROOM DETACHED HOME

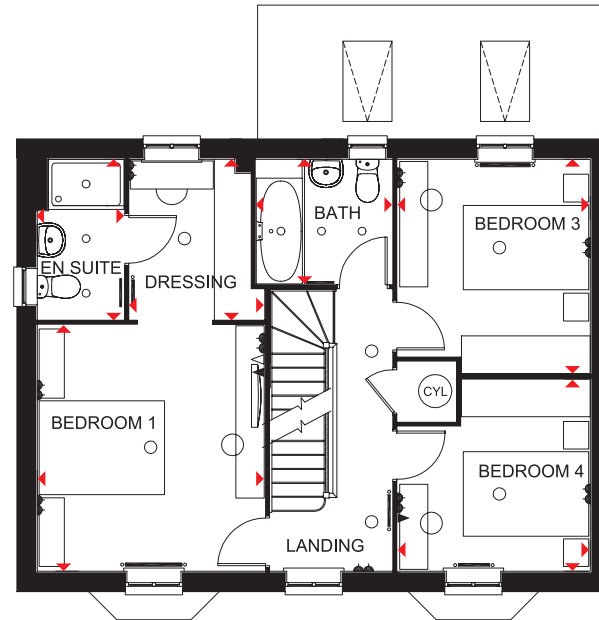
Key

○ Light fitting	◁ T.V. aerial socket	— Towel radiator	CYL Cylinder	wm Washing machine space	◀▶ Dimension location
◀ Electric socket	▣ Media plate	B Boiler	frd Fridge space	dw Dishwasher space	
◀ Telephone outlet point	— Radiator	ST Store	frz Freezer space	td Tumble dryer space	



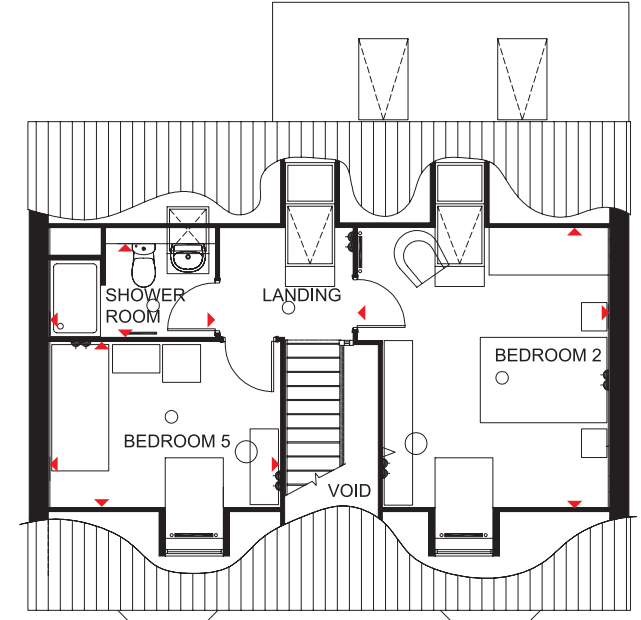
Ground Floor

Sitting	6580 x 3573 mm	21'7" x 11'9"
Kitchen/Breakfast/Family	5107 x 4067 mm	16'9" x 13'4"
Dining	3109 x 3052 mm	10'2" x 10'0"
Utility	1950 x 1531 mm	6'5" x 5'0"
WC	1531 x 1013 mm	5'0" x 3'4"



First Floor

Bedroom 1	3931 x 3634 mm	12'11" x 11'11"
Dressing	2560 x 2161 mm	8'5" x 7'1"
En suite	2560 x 1385 mm	8'5" x 4'7"
Bedroom 3	3423 x 3076 mm	11'3" x 10'1"
Bedroom 4	3076 x 3068 mm	10'1" x 10'1"
Bath	2173 x 1991 mm	7'2" x 6'6"



Second Floor

Bedroom 2	4402 x 3561 mm	14'5" x 11'8"*
Bedroom 5	3634 x 2602 mm	11'11" x 8'6"*
Shower Room	2606 x 1470 mm	8'7" x 4'10"*

*Overall floor dimension includes lowered ceiling areas

Floor plans are intended to give a general indication of the proposed floor layout only. Dimensions are accurate to within + or - 50mm but should not be used for carpet or flooring sizes, appliance spaces or items of furniture. Please ask our Sales Adviser for details of the treatments specified for individual plots. Individual features such as windows, brick and other materials' colours may vary, as may drainage, heating and electrical layouts. Images, photographs and dimensions are not intended to form part of any contract or warranty unless specifically incorporated in writing into the contract. H500 09BL WV01



THE MADDOC

FIVE BEDROOM DETACHED HOME



Individual plots may vary, please speak to the Sales Adviser



Stylishly designed over three floors, this five bedroom home makes perfect use of the free-flowing space. The quality kitchen features a spacious family breakfast area alongside the main dining space and glazed bay that leads to the garden. The ground floor also boasts a sitting room with bay window. On the

first floor the master bedroom with en suite shower room makes a relaxing haven, and there are two additional double bedrooms and a family bathroom. A further double bedroom is located on the second floor, accompanied by a shower room and a single bedroom that could also work perfectly as a study.



DAVID WILSON HOMES

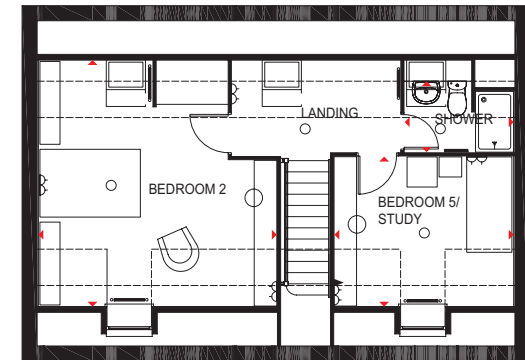
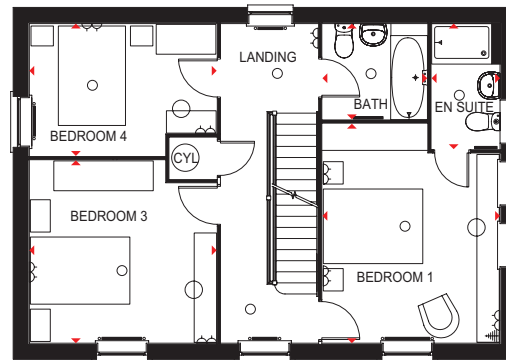
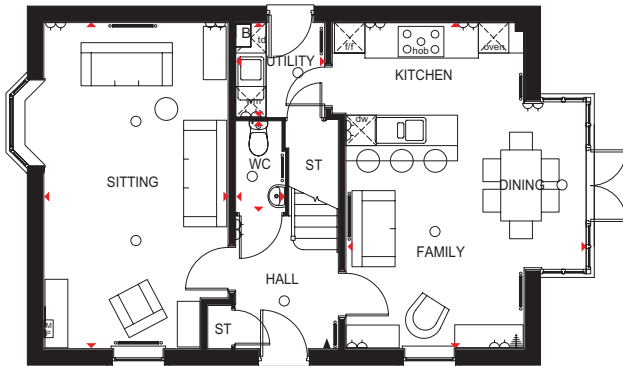
WHERE QUALITY LIVES

THE MADDOC

FIVE BEDROOM DETACHED HOME

Key

- Light fitting
- ◀ Telephone outlet point
- ▣ Media plate
- Towel radiator
- ST Store
- f/f Fridge/freezer space
- dw Dishwasher space
- ◀▶ Dimension location
- ⌋ Electric socket
- ⚡ T.V. aerial socket
- Radiator
- B Boiler
- CYL Cylinder
- wm Washing machine space
- td Tumble dryer space



Ground Floor

Sitting	6427 x 3631 mm	21'1" x 11'11"
Kitchen/Family/Dining	6427 x 4735 mm	21'1" x 15'6"
Utility	1860 x 1754 mm	6'1" x 5'9"
WC	1786 x 971 mm	5'10" x 3'2"

First Floor

Bedroom 1	4413 x 3571 mm	14'6" x 11'9"
En suite	2525 x 1375 mm	8'3" x 4'6"
Bedroom 3	3767 x 3677 mm	12'4" x 12'1"
Bedroom 4	3767 x 2661 mm	12'4" x 8'9"
Bath	2107 x 1925 mm	6'11" x 6'4"

Second Floor

Bedroom 2	4911* x 4748 mm	16'1"* x 15'7"
Bedroom 5/Study	3571 x 2988* mm	11'9" x 9'10"*
Shower	2171 x 1412* mm	7'1" x 4'8"*

* Overall floor dimension includes lowered ceiling areas

Floor plans are intended to give a general indication of the proposed floor layout only. Dimensions are accurate to within + or - 50mm but should not be used for carpet or flooring sizes, appliance spaces or items of furniture. Please ask our Sales Adviser for details of the treatments specified for individual plots. Individual features such as windows, brick and other materials' colours may vary, as may drainage, heating and electrical layouts. Images, photographs and dimensions are not intended to form part of any contract or warranty unless specifically incorporated in writing into the contract. H534 09VR

