



Harrogate

Lifestyle

THREE BEDROOM HOME



 REDROW



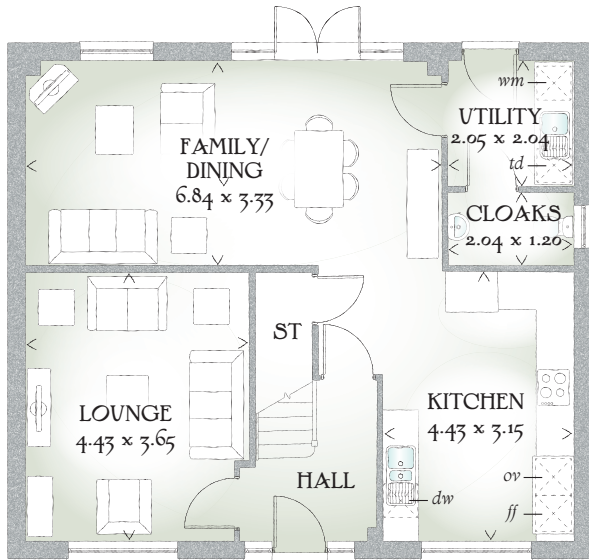
Harrogate

Lifestyle

THREE BEDROOM HOME



 REDROW



THREE BEDROOM HOME

The Harrogate Lifestyle may look very traditional on the outside, however inside it's anything but, with a stunning specification that includes a magnificent master bedroom suite with a unique dressing area and two further double bedrooms each with their own en-suite bathroom.

GROUND FLOOR

Lounge	14'6" x 12'0"	4.43 x 3.65 m
Kitchen	14'6" x 10'4"	4.43 x 3.15 m
Family/ Dining	22'5" x 10'11"	6.84 x 3.33 m
Utility	6'9" x 6'8"	2.05 x 2.04 m
Cloaks	6'8" x 3'11"	2.04 x 1.20 m


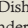
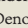
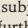

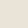
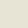
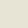
FIRST FLOOR

Bedroom 1	12'2" x 11'10"	3.72 x 3.60 m
Dressing Area	7'6" x 6'8"	2.28 x 2.03 m
En-suite 1	12'2" x 6'1"	3.72 x 1.86 m
Bedroom 2	13'0" x 9'7"	3.95 x 2.92 m
En-suite 2	7'6" x 7'2"	2.28 x 2.18 m
Bedroom 3	13'1" x 10'4"	4.00 x 3.14 m
En-suite 3	7'1" x 6'7"	2.17 x 2.00 m

CONSUMER CODE FOR HOME BUILDERS

www.consumercode.co.uk

Customers should note this illustration is an example of the Harrogate Lifestyle house type. All dimensions indicated are approximate and furniture layout is for illustrative purposes only. Homes may be 'handed' (mirror image) versions of the illustrations, and may be detached, semi-detached or terraced. Materials used may differ from plot to plot including render and roof tile colours. Detailed plans and specifications are available for inspection for each plot at our Sales Centre during working hours and customers must check their individual specifications prior to making a reservation.

KEY  Hob  Oven  Fridge/freezer  Washing machine space  Dishwasher space  Tumble dryer space  Hot water cylinder  Cupboard
< Denotes where dimensions are taken from. All wardrobes are subject to site specification. Please see Sales Consultant for further details.

Redrow.co.uk give notice that the property particulars and related information on this site, whilst believed to be accurate, are set as a general outline for guidance only. Intending purchasers should not rely on them as statements or representations of fact, but must satisfy themselves before physical inspection as to their availability, or by physical inspection of the property in question or otherwise as to their accuracy or fit for purpose. Consequently, no information displayed on this site (or linked sites) constitutes or forms part of a contract. Materials used may differ from plot to plot including render and roof tile colours.

Traditional homes, built the way you remember

 **REDROW**
A BETTER WAY TO LIVE