


Wain
HOMES



A place that lets you be you.
That says everything about you.
That feels good, feels right.
Where life can be beautifully imperfect.
And you love every moment of it.

YOUR KIND OF *perfect*

KEYFORD ON THE GREEN DEVELOPMENT PLAN



Potential Development by Others

2 Bedroom House

- Tullipwood (TL)
- Underwood (UW)

3 Bedroom House

- Lavender (LV)
- Whitebeam (WB)

4 Bedroom House

- Hawthorn (HW)
- Hazel (HZ)
- Hornbeam (HB)

5 Bedroom House

- Larch (LA)

Other

- Affordable Housing

KEYFORD ON THE GREEN SPECIFICATION

SILVER SPECIFICATION DETAILS

TULIPWOOD | UNDERWOOD | LAVENDER | WHITEBEAM

KITCHENS

- Luxury Fitted Kitchen* with a Choice of Finishes**
- Laminate Worktops to Kitchen with Matching Upstands
- Stainless Steel AEG Single Electric Oven
- AEG Induction Hob
- Stainless Steel Extractor Hood
- Stainless Steel One and a Half Bowl Sink to Kitchen
- Hansgrohe Single Level Kitchen Mixer
- Wall Unit LED Strip Light
- 60cm Glass Splashback
- Oak Cutlery Tray

BATHROOMS

- Roca Sanitaryware
- Hansgrohe Brassware
- Thermostatic Hansgrohe Showers and Bath Shower and Mixers
- Full Height Tiling to all Shower Enclosures
- Bathroom and En-suites to be Half Tiled with a Choice of Wall Tiles From Tileflair**
- Shaver Sockets to all Bathrooms and En-suites

BEDROOMS

- Television Aerial Point to Bedroom 1
- Telephone Point to Bedroom 1
- Data Point with Cat 6 Wiring to Bedroom 1

HEATING SYSTEM

- Mitsubishi Air Source Heat Pumps
- Mitsubishi Smart Heating Thermostat

OTHER INTERNAL FEATURES

- All Ceilings to be Painted White
- All Walls to be Painted Wain Homes Soft Cream Finish
- Oak Handrail and Newel Caps
- Television Aerial Point to Lounge
- Telephone Point to Lounge
- Data Points with Cat 6 Wiring to Lounge and Family Room (where applicable)
- USB Sockets to Lounge, Kitchen, Family Room, all Bedrooms and Study (where applicable)
- Deta Stainless Steel Sockets to Kitchen and Adjoining Room
- Contemporary Oak Panel Doors
- White Downlights to the Kitchen Area

EXTERNAL FEATURES

- White PVCu Double Glazed Windows
- White BiFold Doors to all plots
- White PVCu Fascia & Soffits
- GRP Composite Front and Rear Doors
- Black Rainwater Goods
- Doorbell
- External PIR Lights to Front and Rear
- External Tap
- Power and Lighting to all Integral and Detached Garages within the curtilage of the plot
- Gardens Turfed/Landscaped to the Front
- Gardens Rotavated to Rear
- Electric Car Charging Unit
- PV Solar Panels to Roof

WARRANTIES

- 10 Year NHBC Buildmark Warranty
- 2 Year Wain Homes Warranty



AEG



Honeywell



*Upgraded kitchen choices available **Subject to build stage.

Wain Homes abides by the New Homes Quality Code, an independent industry code introduced to champion quality new homes and better consumer outcomes. Wain Homes Policy is continuous product and specification development. Images shown are for illustrative purposes only. Every effort has been made to ensure the accuracy of the information provided in this leaflet at the date of publication but it may be subject to change without notice. Specification choices are subject to build stage. Please consult with our Sales Executive to obtain the current specification or the specification of any particular plot. You should take appropriate steps to verify any information upon which you wish to rely. These particulars are intended for guidance only and their accuracy is not guaranteed. They do not constitute a contract, part of a contract or warranty. (July 2024)

Wain
HOMES

KEYFORD ON THE GREEN SPECIFICATION

GOLD SPECIFICATION DETAILS HAWTHORN | HAZEL | HORNBEAM

KITCHENS

- Luxury Fitted Kitchen* with a Choice of Finishes**
- Laminate Worktops to Kitchen with Matching Upstands
- Stainless Steel AEG Double Electric Oven
- AEG Induction Hob
- Stainless Steel Extractor Hood
- Integrated Fridge Freezer (4 Bed properties only)
- Stainless Steel One and a Half Bowl Sink to Kitchen
- Hansgrohe Single Level Kitchen Mixer
- Wall Unit LED Strip Light
- 90cm Glass Splashback
- Oak Cutlery Tray

BATHROOMS

- Roca Sanitaryware
- Hansgrohe Brassware
- Thermostatic Hansgrohe Showers and Bath Shower and Mixers
- Full Height Tiling to all Shower Enclosures
- Bathroom and En-suites to be Half Tiled with a Choice of Wall Tiles From Tileflair**
- Shaver Sockets to all Bathrooms and En-suites

BEDROOMS

- Television Aerial Point to Bedroom 1
- Telephone Point to Bedroom 1
- Data Point with Cat 6 Wiring to Bedroom 1

HEATING SYSTEM

- Mitsubishi Air Source Heat Pumps
- Mitsubishi Smart Heating Thermostat

OTHER INTERNAL FEATURES

- All Ceilings to be Painted White
- All Walls to be Painted Wain Homes Soft Cream Finish
- Oak Handrail and Newel Caps
- Television Aerial Point to Lounge
- Telephone Point to Lounge
- Data Points with Cat 6 Wiring to Lounge and Family Room (where applicable)
- USB Sockets to Lounge, Kitchen, Family Room, all Bedrooms and Study (where applicable)
- Deta Stainless Steel Sockets to Kitchen and Adjoining Room
- Fitted Security Alarm
- Contemporary Oak Panel Doors
- White Downlights to the Kitchen Area

EXTERNAL FEATURES

- White PVCu Double Glazed Windows
- White BiFold Doors to all plots
- White PVCu Fascia & Soffits
- GRP Composite Front and Rear Doors
- Black Rainwater Goods
- Doorbell
- External PIR Lights to Front and Rear
- External Tap
- Power and Lighting to all Integral and Detached Garages within the curtilage of the plot
- Gardens Turfed/Landscaped to the Front
- Gardens Rotavated to Rear
- Electric Car Charging Unit
- PV Solar Panels to Roof

WARRANTIES

- 10 Year NHBC Buildmark Warranty
- 2 Year Wain Homes Warranty



AEG



Honeywell



*Upgraded kitchen choices available **Subject to build stage.

Wain Homes abides by the New Homes Quality Code, an independent industry code introduced to champion quality new homes and better consumer outcomes. Wain Homes Policy is continuous product and specification development. Images shown are for illustrative purposes only. Every effort has been made to ensure the accuracy of the information provided in this leaflet at the date of publication but it may be subject to change without notice. Specification choices are subject to build stage. Please consult with our Sales Executive to obtain the current specification or the specification of any particular plot. You should take appropriate steps to verify any information upon which you wish to rely. These particulars are intended for guidance only and their accuracy is not guaranteed. They do not constitute a contract, part of a contract or warranty. (July 2024)



KEYFORD ON THE GREEN SPECIFICATION

PLATINUM SPECIFICATION DETAILS

LARCH

KITCHENS

- Luxury Fitted Kitchen* with a Choice of Finishes**
- Silestone Worktops to Kitchen with Matching Upstands
- Stainless Steel AEG Double Electric Oven
- AEG Induction Hob
- Stainless Steel Extractor Hood
- Integrated Fridge Freezer
- Integrated Dishwasher
- Stainless Steel One and a Half Bowl Sink to Kitchen
- Hansgrohe Single Level Kitchen Mixer
- Wall Unit LED Strip Light
- 90cm Glass Splashback
- Oak Cutlery Tray

BATHROOMS

- Roca Sanitaryware
- Hansgrohe Brassware
- Thermostatic Hansgrohe Showers and Bath Shower and Mixers
- Full Height Tiling to all Shower Enclosures
- Bathroom and En-suites to be Half Tiled with a Choice of Wall Tiles From Tileflair**
- Shaver Sockets to all Bathrooms and En-suites

BEDROOMS

- Television Aerial Point to Bedroom 1
- Telephone Point to Bedroom 1
- Data Point with Cat 6 Wiring to Bedroom 1

HEATING SYSTEMS

- Mitsubishi Air Source Heat Pumps
- Mitsubishi Smart Heating Thermostat

OTHER INTERNAL FEATURES

- All Ceilings to be Painted White
- All Walls to be Painted Wain Homes Soft Cream Finish
- Oak Handrail and Newel Caps
- Television Aerial Point to Lounge
- Telephone Point to Lounge
- Data Points with Cat 6 Wiring to Lounge and Family Room (where applicable)
- USB Sockets to Lounge, Kitchen, Family Room, all Bedrooms and Study (where applicable)
- Deta Stainless Steel Sockets to Kitchen and Adjoining Room
- Fitted Security Alarm
- Contemporary Oak Panel Doors
- White Downlights to the Kitchen Area and all Wet Rooms

EXTERNAL FEATURES

- White PVCu Double Glazed Windows
- White BiFold Doors to all plots
- White PVCu Fascia & Soffits
- GRP Composite Front and Rear Doors
- Black Rainwater Goods
- Doorbell
- External PIR Lights to Front and Rear
- External Tap
- Power and Lighting to all Integral and Detached Garages within the curtilage of the plot
- Gardens Turfed/Landscaped to the Front
- Gardens Rotavated to Rear
- Electric Car Charging Unit
- PV Solar Panels to Roof

WARRANTIES

- 10 Year NHBC Buildmark Warranty
- 2 Year Wain Homes Warranty



*Upgraded kitchen choices available **Subject to build stage.

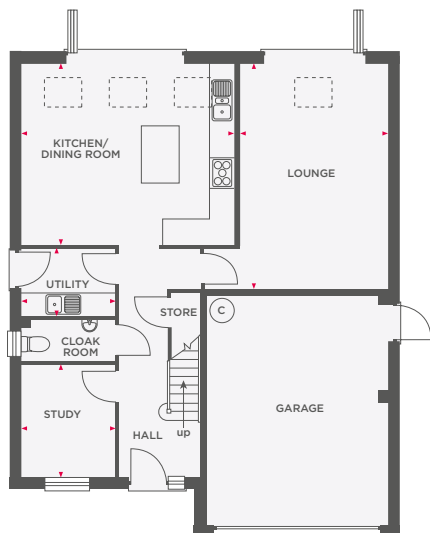
Wain Homes abides by the New Homes Quality Code, an independent industry code introduced to champion quality new homes and better consumer outcomes. Wain Homes Policy is continuous product and specification development. Images shown are for illustrative purposes only. Every effort has been made to ensure the accuracy of the information provided in this leaflet at the date of publication but it may be subject to change without notice. Specification choices are subject to build stage. Please consult with our Sales Executive to obtain the current specification or the specification of any particular plot. You should take appropriate steps to verify any information upon which you wish to rely. These particulars are intended for guidance only and their accuracy is not guaranteed. They do not constitute a contract, part of a contract or warranty. (July 2024)



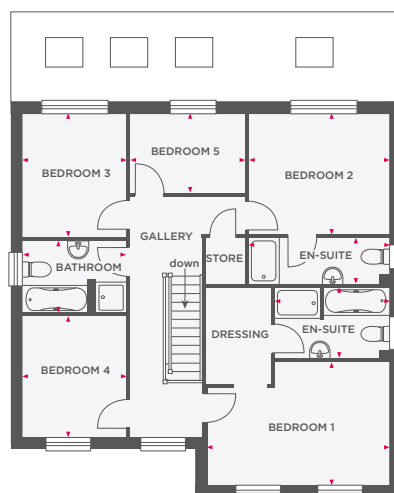


THE LARCH

5 BEDROOM DETACHED HOME WITH DOUBLE GARAGE



Lounge	3850 x 5885	12'7" x 19'3"
Kitchen/Dining Room	5573 x 4735	18'3" x 15'6"
Study	2450 x 2942	8'0" x 9'7"
Utility	2450 x 1775	8'0" x 5'10"
Cloakroom	2450 x 1095	8'0" x 3'7"



Bedroom 1	4735 x 3201	15'6" x 10'6"
En-Suite	2965 x 1850	9'9" x 6'1"
Bedroom 2	3663 x 3146	12'0" x 10'3"
En-Suite	3660 x 1200	12'0" x 3'11"
Bedroom 3	2713 x 3219	8'10" x 10'6"
Bedroom 4	2713 x 3178	8'10" x 10'5"
Bedroom 5	2997 x 2063	9'10" x 6'9"
Bathroom	2715 x 1850	8'11" x 6'1"



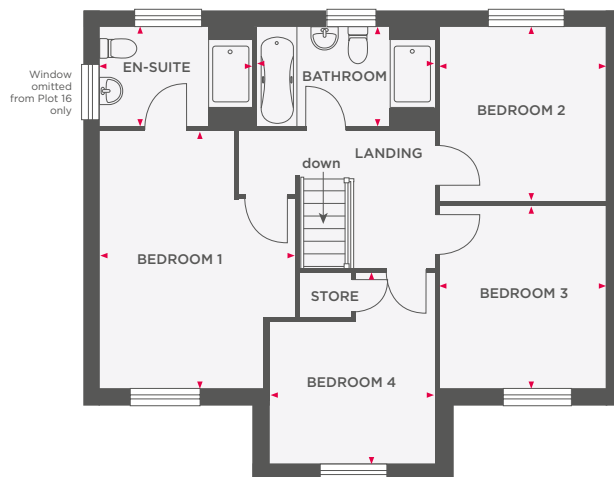
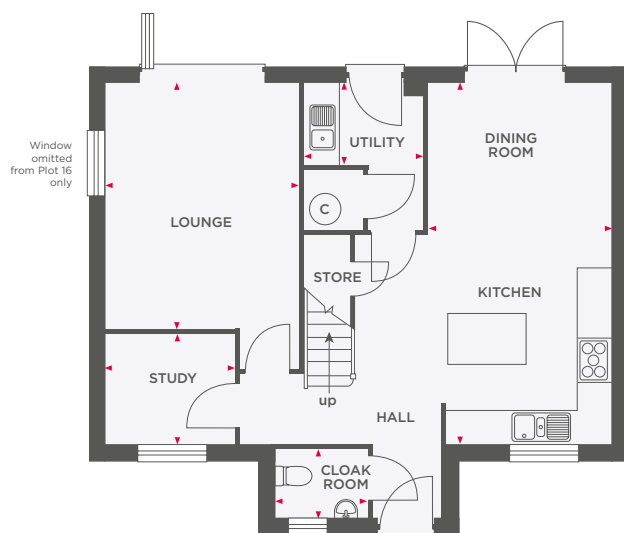
Wain Homes abides by the New Homes Quality Code, an independent industry code introduced to champion quality new homes and better consumer outcomes. Dimensions shown are internal finished dimensions which may vary as each home is built individually and the precise internal finishes may not always be the same. Please be aware that window and door positions could vary due to plot orientation. It is essential to view the working drawings with our Sales Executive for plot specific detail. Enquire for further information. Wain Homes Policy is continuous product and specification development. Every effort has been made to ensure the accuracy of the information provided in this leaflet at the date of publication but it may be subject to change without notice. Please consult with our Sales Executive to obtain the current specification. You should take appropriate steps to verify any information upon which you wish to rely. The sizes indicated are not intended to be used for carpet sizes, appliance spaces or items of furniture. Elevational treatments may vary to those shown. These particulars are intended for guidance only and their accuracy is not guaranteed. They do not constitute a contract, part of a contract or warranty. (January 2025)

Wain
HOMES



THE HAZEL

4 BEDROOM DETACHED HOME WITH STUDY



Lounge	3400 x 4363	11'1" x 14'3"
Kitchen/Dining Room	3255 x 6423	10'7" x 21'0"
Study	2255 x 1973	7'4" x 6'5"
Utility	2130 x 1450	7'0" x 4'9"
Cloakroom	1610 x 1150	5'3" x 3'9"

Bedroom 1	3462 x 4584	11'4" x 15'0"
En-Suite	2625 x 1750	8'7" x 5'9"
Bedroom 2	2925 x 3122	9'7" x 10'2"
Bedroom 3	2949 x 3212	9'8" x 10'6"
Bedroom 4	2935 x 3320	9'7" x 10'10"
Bathroom	2345 x 1700	7'8" x 5'7"



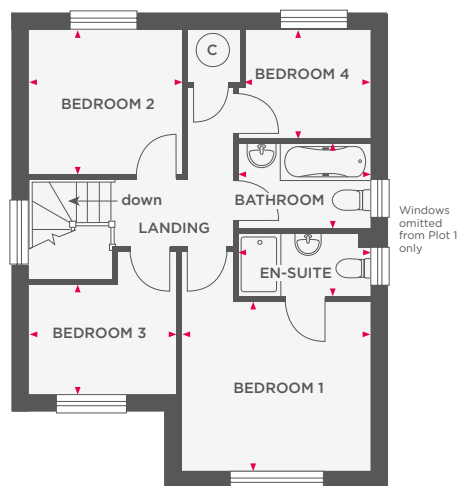
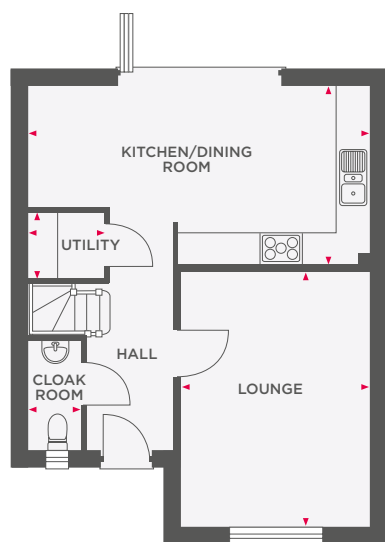
Wain Homes abides by the New Homes Quality Code, an independent industry code introduced to champion quality new homes and better consumer outcomes. Dimensions shown are internal finished dimensions which may vary as each home is built individually and the precise internal finishes may not always be the same. Please be aware that window and door positions could vary due to plot orientation. It is essential to view the working drawings with our Sales Executive for plot specific detail. Enquire for further information. Wain Homes Policy is continuous product and specification development. Every effort has been made to ensure the accuracy of the information provided in this leaflet at the date of publication but it may be subject to change without notice. Please consult with our Sales Executive to obtain the current specification. You should take appropriate steps to verify any information upon which you wish to rely. The sizes indicated are not intended to be used for carpet sizes, appliance spaces or items of furniture. Elevational treatments may vary to those shown. These particulars are intended for guidance only and their accuracy is not guaranteed. They do not constitute a contract, part of a contract or warranty. (January 2025)

Wain
HOMES



THE HAWTHORN

4 BEDROOM DETACHED HOME



Lounge	3610 x 4873	11'10" x 15'11"
Kitchen/Dining Room	6535 x 3425	21'5" x 11'2"
Utility	1456 x 1275	4'9" x 4'2"
Cloakroom	1022 x 2095	3'4" x 6'10"

Bedroom 1	3610 x 3250	11'10" x 10'8"
En-Suite	2535 x 1205	8'4" x 3'11"
Bedroom 2	2926 x 2780	9'6" x 9'1"
Bedroom 3	2837 x 2097	9'3" x 6'9"
Bedroom 4	2368 x 2093	7'8" x 6'9"
Bathroom	2535 x 1615	8'4" x 5'3"



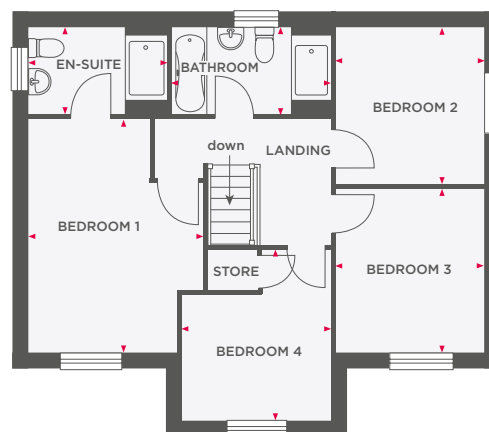
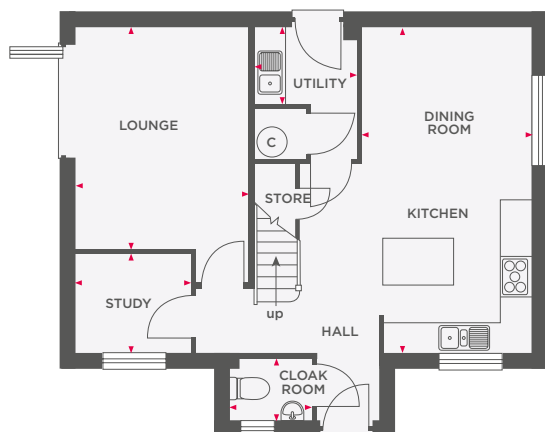
Wain Homes abides by the New Homes Quality Code, an independent industry code introduced to champion quality new homes and better consumer outcomes. Dimensions shown are internal finished dimensions which may vary as each home is built individually and the precise internal finishes may not always be the same. Please be aware that window and door positions could vary due to plot orientation. It is essential to view the working drawings with our Sales Executive for plot specific detail. Enquire for further information. Wain Homes Policy is continuous product and specification development. Every effort has been made to ensure the accuracy of the information provided in this leaflet at the date of publication but it may be subject to change without notice. Please consult with our Sales Executive to obtain the current specification. You should take appropriate steps to verify any information upon which you wish to rely. The sizes indicated are not intended to be used for carpet sizes, appliance spaces or items of furniture. Elevational treatments may vary to those shown. These particulars are intended for guidance only and their accuracy is not guaranteed. They do not constitute a contract, part of a contract or warranty. (January 2025)





THE HORNBEAM

4 BEDROOM DETACHED HOME WITH STUDY



Lounge	3400 x 4363	11'1" x 14'3"
Kitchen/Dining Room	3255 x 6423	10'7" x 21'0"
Study	2255 x 1973	7'4" x 6'5"
Utility	2120 x 1450	6'11" x 4'9"
Cloakroom	1610 x 1150	5'3" x 3'9"

Bedroom 1	3462 x 4584	11'4" x 15'0"
En-Suite	3200 x 1790	10'6" x 5'10"
Bedroom 2	2925 x 3122	9'7" x 10'2"
Bedroom 3	2949 x 3212	9'8" x 10'6"
Bedroom 4	2935 x 3320	9'7" x 10'10"
Bathroom	2635 x 1750	8'8" x 5'9"



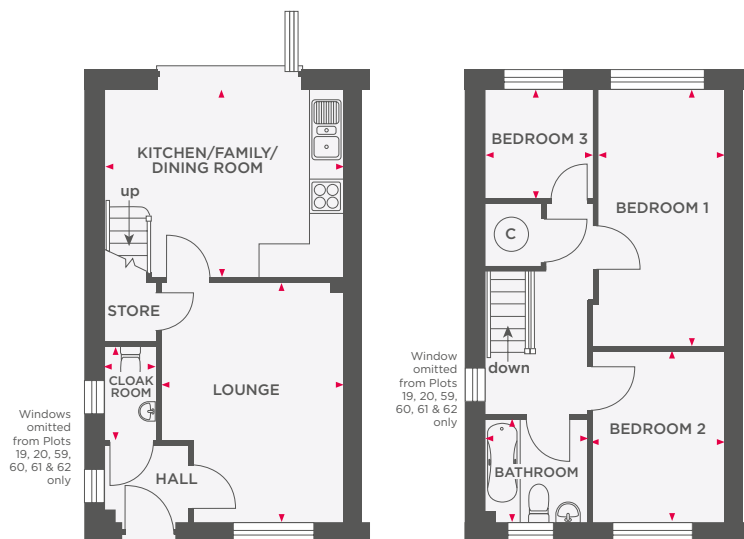
Wain Homes abides by the New Homes Quality Code, an independent industry code introduced to champion quality new homes and better consumer outcomes. Dimensions shown are internal finished dimensions which may vary as each home is built individually and the precise internal finishes may not always be the same. Please be aware that window and door positions could vary due to plot orientation. It is essential to view the working drawings with our Sales Executive for plot specific detail. Enquire for further information. Wain Homes Policy is continuous product and specification development. Every effort has been made to ensure the accuracy of the information provided in this leaflet at the date of publication but it may be subject to change without notice. Please consult with our Sales Executive to obtain the current specification. You should take appropriate steps to verify any information upon which you wish to rely. The sizes indicated are not intended to be used for carpet sizes, appliance spaces or items of furniture. Elevational treatments may vary to those shown. These particulars are intended for guidance only and their accuracy is not guaranteed. They do not constitute a contract, part of a contract or warranty. (January 2025)





THE LAVENDER

3 BEDROOM HOME WITH PARKING



Lounge	3449 x 4472	11'3" x 14'8"
Kitchen/Dining Room	4499 x 3550	14'9" x 11'7"
Cloakroom	975 x 1775	3'2" x 5'10"

Bedroom 1	2320 x 4792	7'6" x 15'7"
Bedroom 2	2450 x 3230	8'0" x 10'6"
Bedroom 3	2092 x 2055	6'8" x 6'7"
Bathroom	1965 x 1865	6'5" x 6'1"



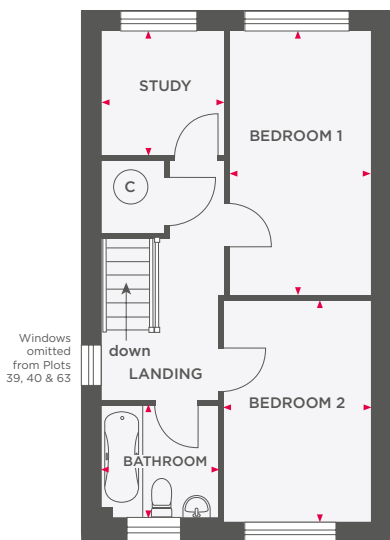
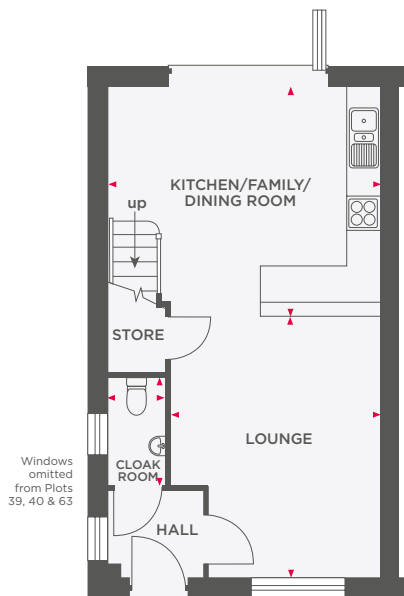
Wain Homes abides by the New Homes Quality Code, an independent industry code introduced to champion quality new homes and better consumer outcomes. Dimensions shown are internal finished dimensions which may vary as each home is built individually and the precise internal finishes may not always be the same. Please be aware that window and door positions could vary due to plot orientation. It is essential to view the working drawings with our Sales Executive for plot specific detail. Enquire for further information. Wain Homes Policy is continuous product and specification development. Every effort has been made to ensure the accuracy of the information provided in this leaflet at the date of publication but it may be subject to change without notice. Please consult with our Sales Executive to obtain the current specification. You should take appropriate steps to verify any information upon which you wish to rely. The sizes indicated are not intended to be used for carpet sizes, appliance spaces or items of furniture. Elevational treatments may vary to those shown. These particulars are intended for guidance only and their accuracy is not guaranteed. They do not constitute a contract, part of a contract or warranty. (January 2025)

**Wain
HOMES**



THE UNDERWOOD

2 BEDROOM + STUDY HOME WITH PARKING



Lounge	3449 x 4472	11'3" x 14'8"
Kitchen/Dining Room	4499 x 3550	14'9" x 11'7"
Cloakroom	960 x 1775	3'2" x 5'10"

Bedroom 1	2358 x 4371	7'7" x 14'4"
Bedroom 2	2450 x 3652	8'0" x 11'9"
Study	2054 x 2055	6'7" x 6'7"
Bathroom	1620 x 1865	5'4" x 6'1"



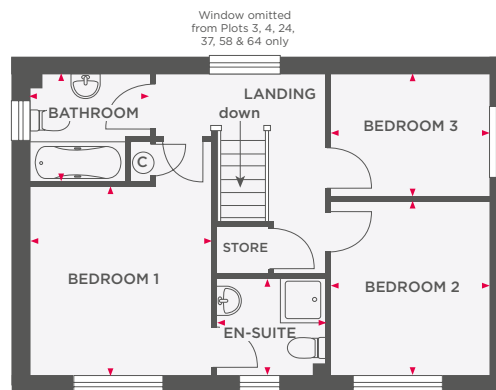
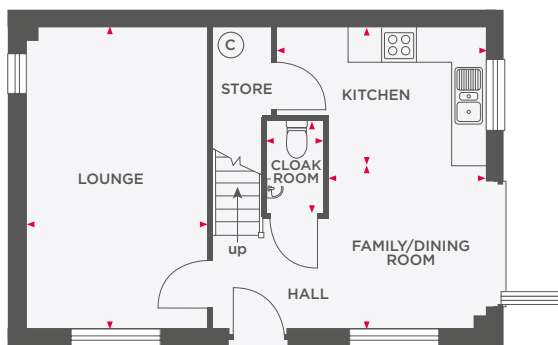
Wain Homes abides by the New Homes Quality Code, an independent industry code introduced to champion quality new homes and better consumer outcomes. Dimensions shown are internal finished dimensions which may vary as each home is built individually and the precise internal finishes may not always be the same. Please be aware that window and door positions could vary due to plot orientation. It is essential to view the working drawings with our Sales Executive for plot specific detail. Enquire for further information. Wain Homes Policy is continuous product and specification development. Every effort has been made to ensure the accuracy of the information provided in this leaflet at the date of publication but it may be subject to change without notice. Please consult with our Sales Executive to obtain the current specification. You should take appropriate steps to verify any information upon which you wish to rely. The sizes indicated are not intended to be used for carpet sizes, appliance spaces or items of furniture. Elevational treatments may vary to those shown. These particulars are intended for guidance only and their accuracy is not guaranteed. They do not constitute a contract, part of a contract or warranty. (January 2025)





THE WHITEBEAM

3 BEDROOM DETACHED HOME



Lounge	3212 x 5297	10'6" x 17'4"
Kitchen	3656 x 2428	12'0" x 7'10"
Dining/Family Room	2750 x 2870	9'0" x 9'4"
Cloakroom	1020 x 1650	3'4" x 5'5"

Bedroom 1	3213 x 3327	10'5" x 10'10"
En-Suite	1925 x 1725	6'4" x 5'8"
Bedroom 2	2772 x 3071	9'1" x 10'1"
Bedroom 3	2772 x 2139	9'1" x 7'0"
Bathroom	2130 x 1910	7'0" x 6'3"



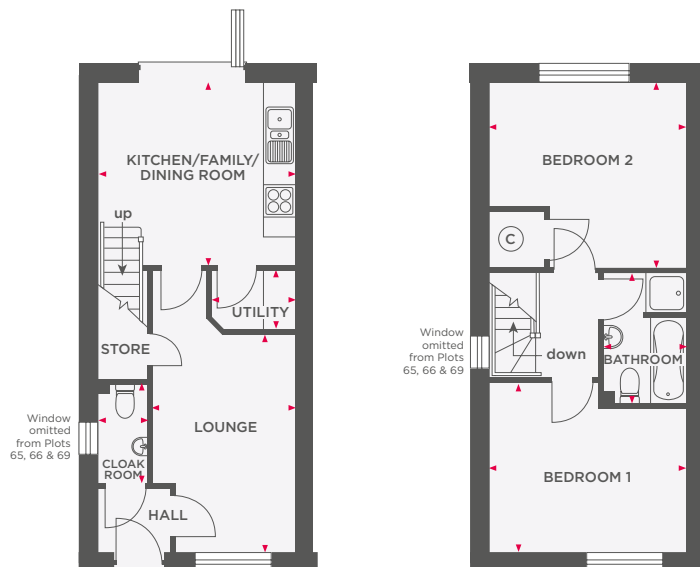
Wain Homes abides by the New Homes Quality Code, an independent industry code introduced to champion quality new homes and better consumer outcomes. Dimensions shown are internal finished dimensions which may vary as each home is built individually and the precise internal finishes may not always be the same. Please be aware that window and door positions could vary due to plot orientation. It is essential to view the working drawings with our Sales Executive for plot specific detail. Enquire for further information. Wain Homes Policy is continuous product and specification development. Every effort has been made to ensure the accuracy of the information provided in this leaflet at the date of publication but it may be subject to change without notice. Please consult with our Sales Executive to obtain the current specification. You should take appropriate steps to verify any information upon which you wish to rely. The sizes indicated are not intended to be used for carpet sizes, appliance spaces or items of furniture. Elevational treatments may vary to those shown. These particulars are intended for guidance only and their accuracy is not guaranteed. They do not constitute a contract, part of a contract or warranty. (January 2025)





THE TULIPWOOD

2 BEDROOM HOME WITH PARKING



Lounge	2830 x 4263	9'3" x 14'0"
Kitchen/Dining Room	3880 x 3597	12'8" x 11'8"
Utility	1663 x 1200	5'5" x 3'11"
Cloakroom	963 x 1965	3'2" x 6'5"

Bedroom 1	3880 x 3290	12'8" x 10'9"
Bedroom 2	3880 x 3672	12'8" x 12'0"
Bathroom	1690 x 2590	5'6" x 8'6"



Wain Homes abides by the New Homes Quality Code, an independent industry code introduced to champion quality new homes and better consumer outcomes. Dimensions shown are internal finished dimensions which may vary as each home is built individually and the precise internal finishes may not always be the same. Please be aware that window and door positions could vary due to plot orientation. It is essential to view the working drawings with our Sales Executive for plot specific detail. Enquire for further information. Wain Homes Policy is continuous product and specification development. Every effort has been made to ensure the accuracy of the information provided in this leaflet at the date of publication but it may be subject to change without notice. Please consult with our Sales Executive to obtain the current specification. You should take appropriate steps to verify any information upon which you wish to rely. The sizes indicated are not intended to be used for carpet sizes, appliance spaces or items of furniture. Elevational treatments may vary to those shown. These particulars are intended for guidance only and their accuracy is not guaranteed. They do not constitute a contract, part of a contract or warranty. (January 2025)

