

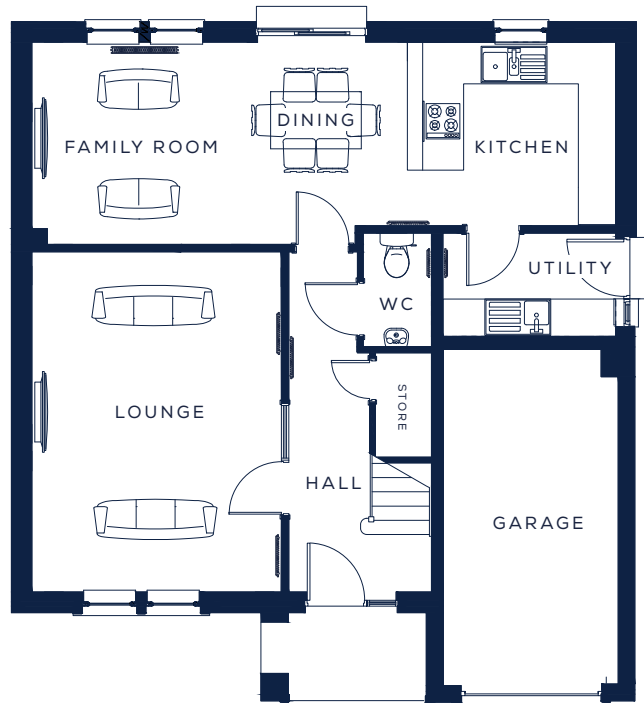
IONA 11

5 BEDROOM DETACHED VILLA

Muir
HOMES

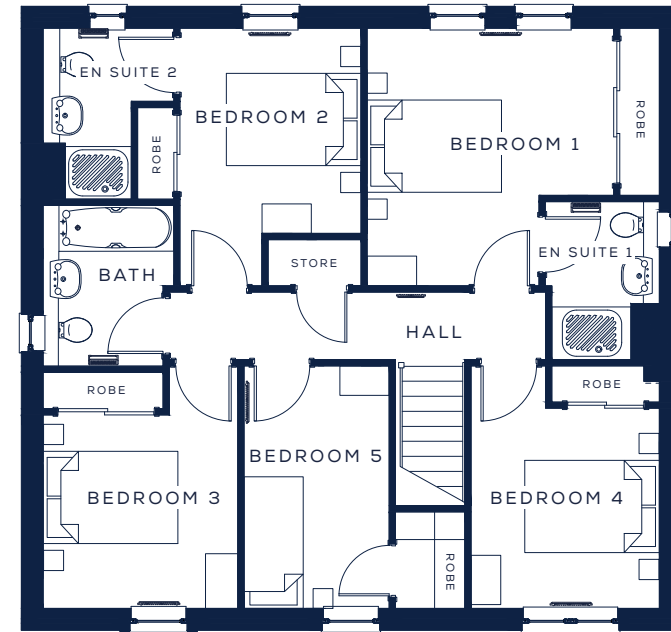
The Iona is a spacious five-bedroom detached home with an integrated garage and a welcoming open plan layout in the family room, dining area and kitchen. Integrated wardrobes are fitted to each generous sized bedroom, and two bedrooms have access to their own en suite shower rooms.





GROUND FLOOR

LOUNGE	4.00m x 5.45m	13'1" x 17'11"
DINING/FAMILY	5.18m x 3.24m	17'0" x 10'8"
KITCHEN	4.18m x 2.94m	13'8" x 9'8"
WC	1.09m x 1.82m	3'7" x 6'0"
UTILITY	2.77m x 1.66m	9'1" x 5'5"
GARAGE	2.80m x 5.39m	9'2" x 17'8"



FIRST FLOOR

BEDROOM 1	3.74m x 3.91m	12'3" x 12'10"
EN SUITE 1	1.63m x 2.40m	5'4" x 7'10"
BEDROOM 2	2.75m x 3.12m	9'0" x 10'3"
EN SUITE 2	1.34m x 2.60m	4'5" x 8'6"
BEDROOM 3	2.96m x 2.94m	9'8" x 9'8"
BEDROOM 4	2.86m x 3.04m	9'5" x 10'0"
BEDROOM 5	2.24m x 3.69m	7'3" x 12'1"
BATHROOM	1.99m x 2.44m	6'6" x 8'0"