

Alexander Gate

Waterloo Road, Hanley, Stoke ST1 5EH

ALEXANDER GATE, STOKE

DEVELOPMENT LAYOUT

KEY

-  MAIDSTONE 3 bedroom home
-  ENNERDALE 3 bedroom home
-  RICHMOND 2 bedroom home
-  FOLKESTONE 3 bedroom home
-  KINGSLEY 4 bedroom home
-  ALVERTON 2 bedroom home

+ Fog housetype, please refer to working drawings for garage locations



barratthomes.co.uk

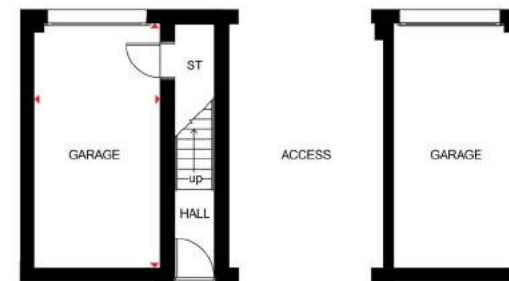

BARRATT
HOMES

Development layouts and landscaping are not intended to form part of any contract or warranty unless specifically incorporated in writing into the contract. Images and development layouts are for illustrative purposes and should be used for general guidance only. Development layouts including parking arrangements, may change to reflect changes in planning permission and are not intended to form part of any contract or warranty unless specifically incorporated in writing. Please speak to your solicitor to whom full details of any planning consents including layout plans will be available. Alexander Gate is a marketing name only and may not be the designated postal address, which may be determined by The Post Office. SP360310

2 BEDROOM HOME



- This first floor home will appeal to first-time buyers
- The open-plan fitted kitchen with dining area and lounge is a bright and airy place to relax or entertain friends
- There are two double bedrooms, the largest with its own en suite shower room, and a fully fitted bathroom



Ground Floor

Garage	5475 x 2825mm	18'0" x 9'3"
--------	---------------	--------------

(Approximate dimensions)



First Floor

Lounge/ Dining/Kitchen	3729 x 5399mm	12'3" x 17'9"
Bedroom 1	3024 x 5399mm	9'11" x 17'9"
En Suite	2035 x 1398mm	6'8" x 4'7"
Bedroom 2	3692 x 2627mm	12'1" x 8'7"
Bathroom	1755 x 1701mm	5'9" x 5'7"

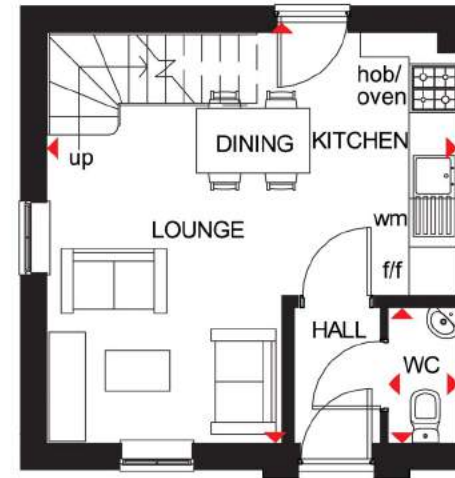
(Approximate dimensions)

KEY	B	Boiler	f/f	Fridge/freezer space
	ST	Store	dw	Dishwasher space

TWO BEDROOM HOME



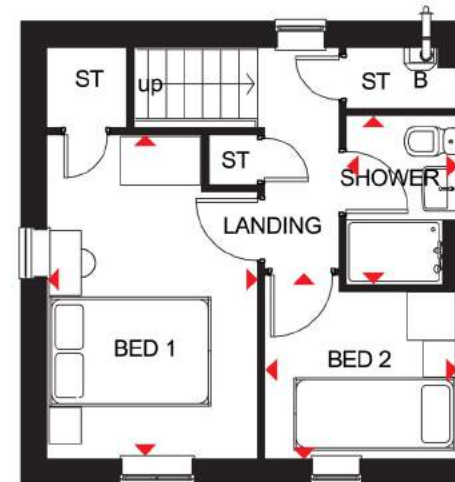
- This terraced home is a perfect start for first-time buyers
- A good-sized open-plan lounge, dining area and fitted kitchen make up the ground floor along with a separate WC
- Upstairs are a double bedroom, a single bedroom, a shower room and plenty of storage space



Ground Floor

Lounge/ Dining/Kitchen	5073 x 5075mm	16'8" x 16'8"
WC	867 x 1675mm	2'10" x 5'6"

(Approximate dimensions)



First Floor

Bedroom 1	3996 x 2598mm	13'1" x 8'6"
Bedroom 2	2389 x 3067mm	7'10" x 10'0"
Shower	1381 x 2087mm	4'6" x 6'10"

(Approximate dimensions)

KEY
B Boiler
ST Store
wm Washing machine space

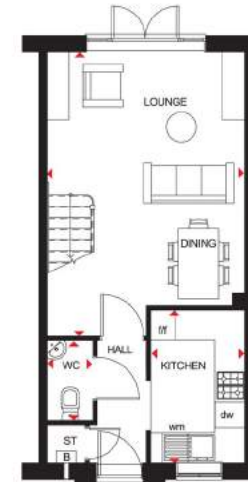
f/f Fridge/freezer space
▶ Dimension location

barratthomes.co.uk

2 BEDROOM TERRACED HOME



- Natural light fills this two bedroom terraced home through oversized windows
- A spacious open-plan lounge and dining area and a fully fitted kitchen create a great place for modern living
- On the first floor are two double bedrooms, the master with en suite, and a family bathroom



Ground Floor

Lounge/Dining	5681 x 3943mm	18'8" x 12'11"
Kitchen	3063 x 1880mm	10'1" x 6'2"
WC	1600 x 904mm	5'3" x 3'0"

(Approximate dimensions)



First Floor

Bedroom 1	2600 x 3943mm	8'6" x 12'11"
En Suite	1259 x 1901mm	4'1" x 6'3"
Bedroom 2	3943 x 2452mm	12'11" x 8'1"
Bathroom	2059 x 1901mm	6'9" x 6'3"

(Approximate dimensions)

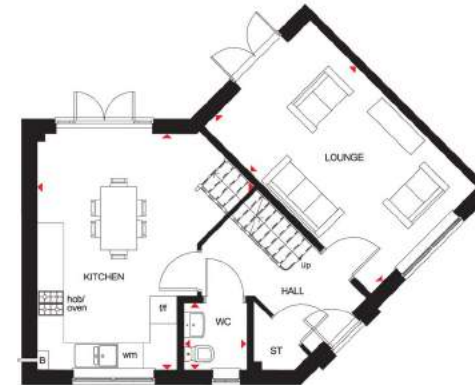
KEY	ST	Store	f/f	Fridge/freezer space
	B	Boiler	dw	Dishwasher space
	wm	Washing machine space	↔	Dimension location

barratthomes.co.uk

3 BEDROOM HOME



- Natural light floods into this home via oversized windows and two sets of French doors leading to the rear garden
- A large open-plan kitchen and dining area creates a great hub for the family, while the dual-aspect lounge provides room to entertain
- Upstairs are two spacious double bedrooms, the master with en suite, a single bedroom and family bathroom



Ground Floor

Lounge	5230 x 3319mm	17'2" x 10'11"
Kitchen/Dining	5230 x 4822mm	17'2" x 15'10"
WC	1418 x 1480mm	4'8" x 4'10"

(Approximate dimensions)



First Floor

Bedroom 1	5151 x 4040mm	16'11" x 13'2"
En Suite	2478 x 1920mm	8'2" x 6'4"
Bedroom 2	3954 x 3797mm	13'0" x 12'5"
Bedroom 3	2312 x 2213mm	7'7" x 7'3"
Bathroom	2113 x 1863mm	6'11" x 6'1"

(Approximate dimensions)

KEY	B	Boiler	f/f	Fridge/freezer space
	ST	Store	↔	Dimension location
	wm	Washing machine space		

3 BEDROOM HOME



- Light floods into this attractive three bedroom home through oversized windows
- A dual-aspect lounge and bright, fully fitted kitchen with dining area opening onto the garden provide space that's ideal for modern living
- Upstairs are two spacious, dual-aspect double bedrooms, the master with en suite, a single bedroom and family bathroom



Ground Floor

Lounge	4960 x 3112mm	16'3" x 10'3"
Kitchen/Dining	4960 x 3170mm	16'3" x 10'5"
WC	1929 x 911mm	6'4" x 3'0"

(Approximate dimensions)



First Floor

Bedroom 1	4231 x 3898mm	13'11" x 12'9"
En Suite	1667 x 1427mm	5'5" x 4'8"
Bedroom 2	2645 x 3187mm	8'6" x 10'4"
Bedroom 3	2227 x 2089mm	7'4" x 6'10"
Bathroom	1922 x 1914mm	6'4" x 6'2"

(Approximate dimensions)

* Window may be omitted on certain plots. Speak to a Sales Adviser for details on individual plots.

KEY B Boiler
ST Store
wm Washing machine space

f/f Fridge/freezer space
dw Dishwasher space
◀▶ Dimension location

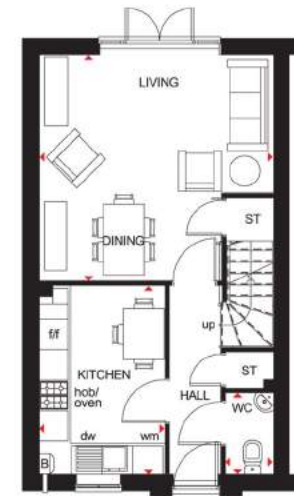
barratthomes.co.uk

FOLKESTONE

3 BEDROOM HOME



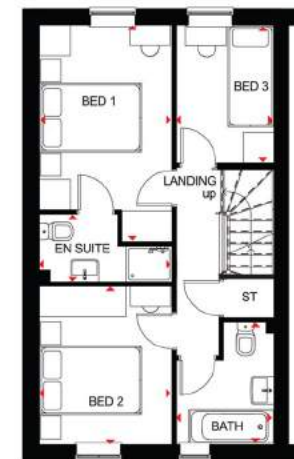
- Bright three bedroom home with flexible space designed for practical modern living
- Open-plan living and dining area opens onto the rear garden, while a fully fitted kitchen includes room for a breakfast area
- Upstairs are a good-sized master bedroom with en suite, a further double bedroom, single bedroom and family bathroom



Ground Floor

Living/Dining	4598 x 4445mm	15'1" x 14'7"
Kitchen	3713 x 2463mm	12'2" x 8'1"
WC	1600 x 948mm	5'3" x 3'1"

(Approximate dimensions)



First Floor

Bedroom 1	4205 x 2597mm	13'10" x 8'6"
En Suite	1325 x 2597mm	4'4" x 8'6"
Bedroom 2	3112 x 2597mm	10'3" x 8'6"
Bedroom 3	2708 x 1913mm	8'11" x 6'3"
Bathroom	2406 x 1913mm	7'11" x 6'3"

(Approximate dimensions)

KEY B Boiler
ST Store
wm Washing machine space

f/f Fridge/freezer space
♦♦ Dimension location

3 BEDROOM SEMI-DETACHED HOME



- An ideal family home designed with plenty of space for modern living
- The ground floor comprises a good-sized lounge and an open-plan kitchen with dining area and French doors leading to the garden
- The first floor has two double bedrooms – the generous master with en suite – a single bedroom and family bathroom



Ground Floor

Lounge	6955 x 3604mm	16'3" x 11'10"
Kitchen/Dining	3202 x 4598mm	10'6" x 15'1"
WC	944 x 1620mm	3'1" x 5'4"

(Approximate dimensions)

* Window may be omitted on certain plots. Speak to a Sales Adviser for details on individual plots



First Floor

Bedroom 1	4204 x 2592mm	13'10" x 8'6"
En Suite	1365 x 2592mm	4'6" x 8'6"
Bedroom 2	3112 x 2592mm	10'3" x 8'6"
Bedroom 3	2676 x 1918mm	8'9" x 6'4"
Bathroom	1702 x 1918mm	5'7" x 6'4"

(Approximate dimensions)

* Window may be omitted on certain plots. Speak to a Sales Adviser for details on individual plots

KEY B Boiler
ST Stair
wm Washing machine space

f/f Fridge/freezer space
♦ Dimension location

4 BEDROOM DETACHED HOME



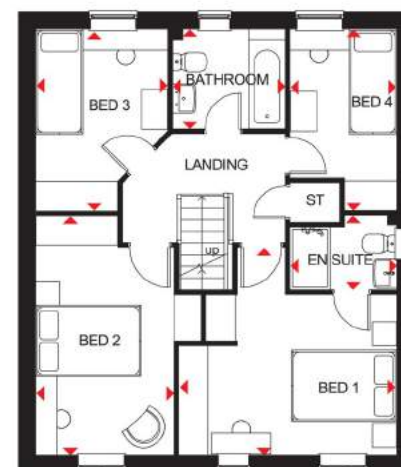
- The open-plan kitchen and dining area in this detached home creates an ideal family hub; French doors leading to the rear garden give the room a bright and airy feeling, and there is also an adjoining utility room
- The separate lounge provides plenty of space for the family to relax in and the ground floor also includes an integral garage
- Upstairs are two double bedrooms, the spacious master with en suite, two single bedrooms and the family bathroom



Ground Floor

Lounge	4142 x 5005mm	13'7" x 16'5"
Kitchen/Dining	5134 x 2910mm	16'10" x 9'7"
Utility	1652 x 1850mm	5'5" x 6'0"
WC	1652 x 1015mm	5'5" x 3'3"
Garage	2537 x 4981mm	8'4" x 16'4"

(Approximate dimensions)



First Floor

Bedroom 1	4152 x 3958mm	13'7" x 13'0"
En Suite	2032 x 1423mm	6'8" x 4'8"
Bedroom 2	2633 x 4560mm	8'8" x 15'0"
Bedroom 3	2512 x 3465mm	8'3" x 11'4"
Bedroom 4	2032 x 3450mm	6'8" x 11'4"
Bathroom	2153 x 1903mm	7'1" x 6'3"

(Approximate dimensions)

KEY B Boiler
ST Store
wm Washing machine space

f/f Fridge/freezer space
dw Dishwasher space
↔ Dimension location

barratthomes.co.uk

4 BEDROOM DETACHED HOME



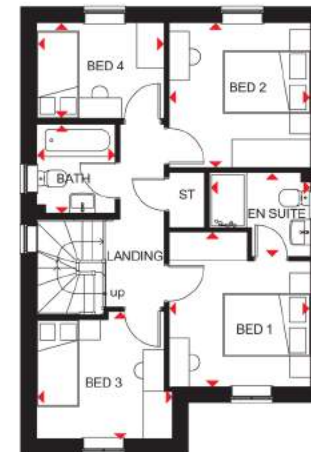
- Bright, airy family home with oversized windows to maximise light
- The large open-plan kitchen has a dining area with French doors leading to the garden; there is also a separate utility room
- The spacious lounge is a great place for the family to relax in
- Upstairs are two double bedrooms, the master with en suite, two single bedrooms and a family bathroom



Ground Floor

Lounge	3370 x 4710mm	11'1" x 15'5"
Kitchen/Dining	5895 x 4268mm	19'4" x 14'0"
WC	904 x 1627mm	3'0" x 5'4"
Utility	1287 x 1841mm	4'3" x 6'0"

(Approximate dimensions)



First Floor

Bedroom 1	3054 x 3328mm	10'0" x 10'11"
En Suite	2181 x 1816mm	7'2" x 5'11"
Bedroom 2	3054 x 3123mm	10'0" x 10'3"
Bedroom 3	2935 x 2747mm	9'8" x 9'0"
Bedroom 4	2754 x 2065mm	9'0" x 6'9"
Bathroom	1700 x 1937mm	5'7" x 6'4"

(Approximate dimensions)

KEY	B	Boiler	f/f	Fridge/freezer space	♦♦	Dimension location
	ST	Store	dw	Dishwasher space		
	wm	Washing machine space	td	Tumble dryer space		

barratthomes.co.uk

FOUR BEDROOM DETACHED HOME



- Bright and spacious four bedroom family home with oversized windows allowing light to flow through
- As well as a generous lounge, the open-plan kitchen with dining area provides room for all the family to enjoy. There is also a separate utility
- Upstairs are three double bedrooms, master with en suite, a single bedroom and family bathroom



Ground Floor

Lounge	4898 x 3287mm	16'1" x 10'9"
Kitchen/Dining	5259 x 3301mm	17'3" x 10'10"
Utility	1700 x 1602mm	5'7" x 5'3"
WC	976 x 1602mm	3'2" x 5'3"
Garage	5189 x 2657mm	17'0" x 8'9"

(Approximate dimensions)



First Floor

Bedroom 1	4221 x 4068mm	13'10" x 13'4"
En Suite	2011 x 1661mm	6'7" x 5'5"
Bedroom 2	2764 x 3965mm	9'1" x 13'0"
Bedroom 3	3174 x 3504mm	10'5" x 11'6"
Bedroom 4	2888 x 2932mm	9'6" x 9'7"
Bathroom	2046 x 1899mm	6'9" x 6'3"

(Approximate dimensions)

KEY	B	Boiler	f/f	Fridge/freezer space	↔	Dimension location
	ST	Store	dw	Dishwasher space		
	wm	Washing machine space	td	Tumble dryer space		

THE CONSUMER CODE

The Consumer Code for Home Builders ("the Code"), which came into effect in April 2010, applies to all home builders registered with the UK's main new Home Warranty Bodies: NHBC, Premier Guarantee and LABC Warranty.

The Code gives protection and rights to purchasers of new homes. It requires all new home buyers to be treated fairly and ensure they are fully informed about their purchase before and after they sign the contract.

The aim of the Code is for all new home buyers to:

- be treated fairly
- know what levels of service to expect
- be given reliable information about their purchase and their consumer rights before and after they move in
- know how to access speedy, low-cost dispute resolution arrangements to deal with complaints about breaches of the Code.

The Code reinforces best practice among home builders to encourage a consistently high level of information and customer service. It builds on successful efforts already made by the industry to improve consumer satisfaction in recent years.

The Code covers every stage of the home-buying purchase – pre-contract, exchange of contract and during occupation.

As a 5 star housebuilder, we are committed to the Consumer Code for Home Builders. For more information on the Consumer Code for Home Builders, please visit <http://www.consumercode.co.uk/>

