


Wain
HOMES



A place that lets you be you.
That says everything about you.
That feels good, feels right.
Where life can be beautifully imperfect.
And you love every moment of it.

YOUR KIND OF *perfect*

HIGHER TREWHIDDLE DEVELOPMENT PLAN



TREWHIDDLE SPECIFICATION

KITCHENS

- Glass Splashback
- Stainless Steel Electric Oven and Gas Hob, Extractor over (as per plot specific working drawing)
- Worktop and Upstand
- Soft Closer Drawers and Hinges
- Downlighters
- Under Unit Lighting
- All Appliances as per Kitchen Layout
- USB Charger Socket
- Stainless Steel Sink with Chrome Mixer Tap

BATHROOMS

- Contemporary White Sanitary Ware
- Chrome Bath Pillar Tap
- Shaver Socket to Bathroom and En-suite
- Chrome Heated Towel Rail to Bathroom and En-suite
- Downlighters to En-Suite

WALL TILING

Cloaks

- Wall Tiling to splashback only in Cloaks

Bathroom

- Half Height Tiling throughout
- Full Height to Shower Cubicle
- Full Height Tiling around Bath if Shower over Bath
- Tiled Window Cills where applicable

En-Suites

- Full Height Tiling to Shower Cubicle and Half Height to all Other Walls
- Tiled Window Cills where applicable

HEATING SYSTEM

- Gas Central Heating to all Properties

INTERNAL FEATURES

- Staircase White, Oak Handrail
- Switches and Sockets White to all Rooms
- Wain Home Cream Painted Walls
- BT & TV points Lounge and Bedroom 1
- Data Point Bed 1
- Vertical Grooved Oak Finish Internal Doors with Chrome Ironmongery
- Smoke Detectors
- Pencil Round Skirting Boards and Architraves
- Flat Finish Ceilings to all Rooms in White Matt

EXTERNAL FEATURES

- UPVC Fascia and Soffit Boards
- PVCu Double Glazed to all Windows (except Garage) to suit external elevations
- French Doors and Paved Patio where applicable
- GRP Front/Rear Doors
- Electric Front Door Bell
- 1.8m Palisade Fencing
- Division Fencing 1.8m Palisade
- External Lights to be fitted Front and Rear Elevations, Energy Efficient Fittings
- Paving Slab Paths to serve Front and Side Entrances as per the External Working Drawings
- UPVC Rainwater Goods
- External Tap

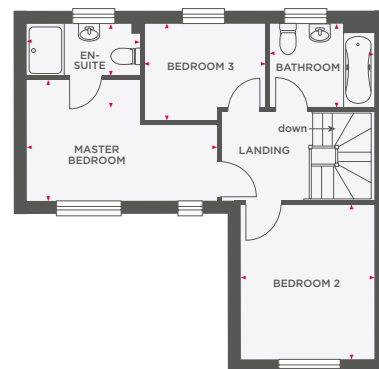
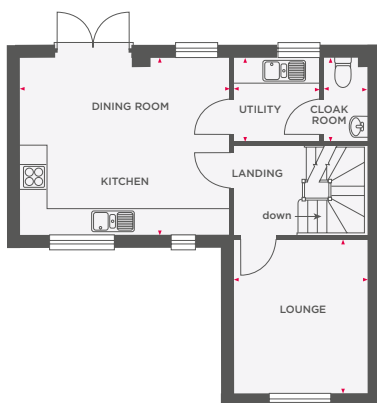
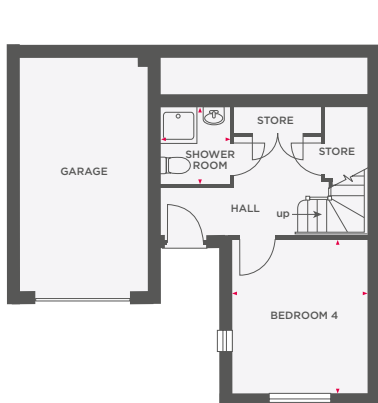
WARRANTIES

- 10 Year NHBC Buildmark Warranty
- 2 Year Wain Homes Warranty



THE ATKINS

4 BEDROOM HOME WITH INTEGRAL GARAGE



Bedroom 4	3100 x 3567	10'2" x 11'8"
Shower Room	1612 x 1760	5'3" x 5'9"
Lounge	3100 x 3567	10'2" x 11'8"
Kitchen/Dining Room	4912 x 4138	16'1" x 13'7"
Utility	2012 x 1937	6'7" x 6'4"
Cloakroom	998 x 1937	3'3" x 6'4"

Master Bedroom	4485 (max) x 2850 (max)	14'8" (max) x 9'4" (max)
En-Suite	2662 x 1200	8'8" x 3'11"
Bedroom 2	3100 x 3567	10'2" x 11'8"
Bedroom 3	2862 (max) x 2250 (max)	9'4" (max) x 7'4" (max)
Bathroom	2400 x 1937	7'10" x 6'4"



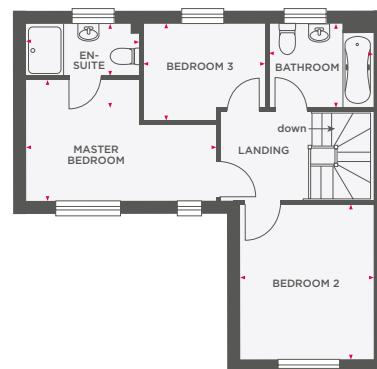
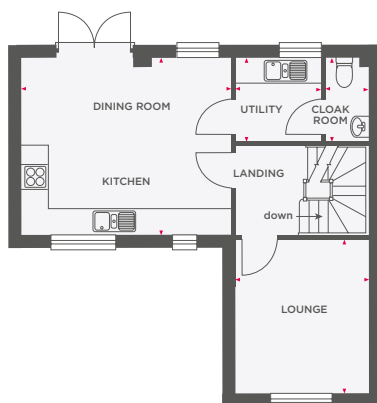
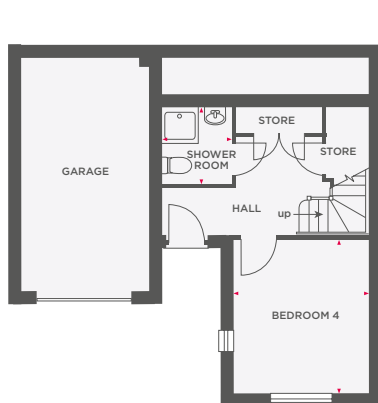
Wain Homes abides by the New Homes Quality Code, an independent industry code introduced to champion quality new homes and better consumer outcomes. Dimensions shown are internal finished dimensions which may vary as each home is built individually and the precise internal finishes may not always be the same. Please be aware that window and door positions could vary due to plot orientation. It is essential to view the working drawings with our Sales Executive for plot specific detail. Enquire for further information. Wain Homes Policy is continuous product and specification development. Every effort has been made to ensure the accuracy of the information provided in this leaflet at the date of publication but it may be subject to change without notice. Please consult with our Sales Executive to obtain the current specification. You should take appropriate steps to verify any information upon which you wish to rely. The sizes indicated are not intended to be used for carpet sizes, appliance spaces or items of furniture. Elevational treatments may vary to those shown. These particulars are intended for guidance only and their accuracy is not guaranteed. They do not constitute a contract, part of a contract or warranty. (March 2025)





THE ATKINS

4 BEDROOM HOME WITH INTEGRAL GARAGE



Bedroom 4	3100 x 3567	10'2" x 11'8"
Shower Room	1612 x 1760	5'3" x 5'9"
Lounge	3100 x 3567	10'2" x 11'8"
Kitchen/Dining Room	4912 x 4138	16'1" x 13'7"
Utility	2012 x 1937	6'7" x 6'4"
Cloakroom	998 x 1937	3'3" x 6'4"

Master Bedroom	4485 (max) x 2850 (max)	14'8" (max) x 9'4" (max)
En-Suite	2662 x 1200	8'8" x 3'11"
Bedroom 2	3100 x 3567	10'2" x 11'8"
Bedroom 3	2862 (max) x 2250 (max)	9'4" (max) x 7'4" (max)
Bathroom	2400 x 1937	7'10" x 6'4"



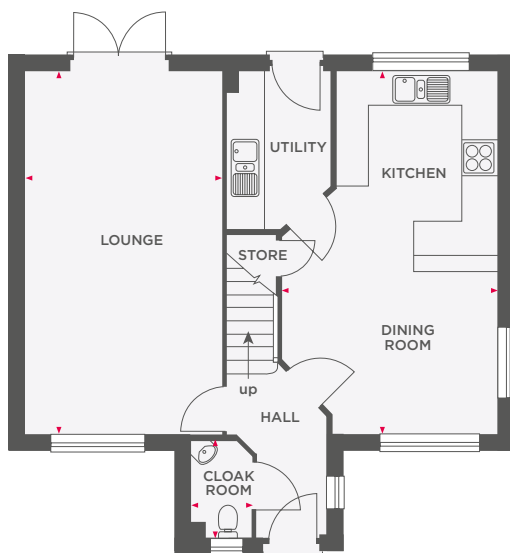
Wain Homes abides by the New Homes Quality Code, an independent industry code introduced to champion quality new homes and better consumer outcomes. Dimensions shown are internal finished dimensions which may vary as each home is built individually and the precise internal finishes may not always be the same. Please be aware that window and door positions could vary due to plot orientation. It is essential to view the working drawings with our Sales Executive for plot specific detail. Enquire for further information. Wain Homes Policy is continuous product and specification development. Every effort has been made to ensure the accuracy of the information provided in this leaflet at the date of publication but it may be subject to change without notice. Please consult with our Sales Executive to obtain the current specification. You should take appropriate steps to verify any information upon which you wish to rely. The sizes indicated are not intended to be used for carpet sizes, appliance spaces or items of furniture. Elevational treatments may vary to those shown. These particulars are intended for guidance only and their accuracy is not guaranteed. They do not constitute a contract, part of a contract or warranty. (March 2025)



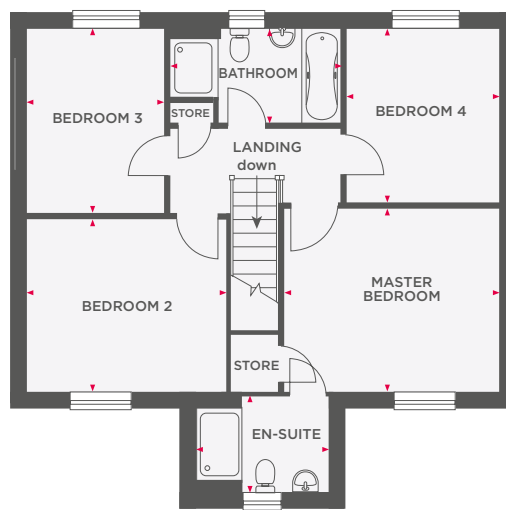


THE DAVY

4 BEDROOM HOME WITH GARAGE



Lounge	3491 x 6535	11'5" x 21'5"
Kitchen/ Dining Room	3840 x 6535	12'7" x 21'5"
Cloakroom	1022 (max) x 1650 (max)	3'4" x 5'5"



Master Bedroom	3840 x 3300	12'7" x 11'0"
En-Suite	2370 x 1709	7'9" x 5'7"
Bedroom 2	3553 x 3605	11'8" x 11'10"
Bedroom 3	2460 x 3342	8'8" x 10'11"
Bedroom 4	2734 x 3140	8'11" x 10'3"
Bathroom	3073 x 1698	10'1" x 5'7"



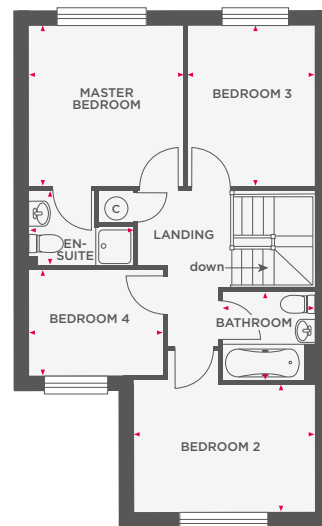
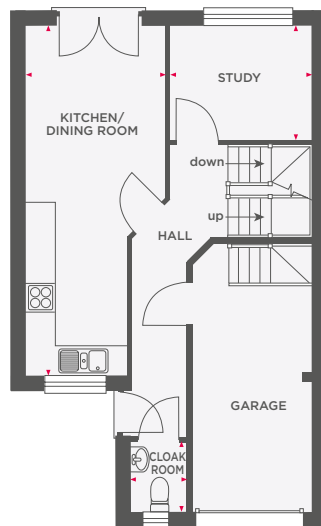
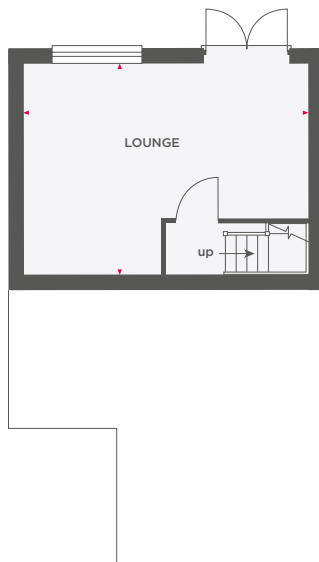
Wain Homes abides by the New Homes Quality Code, an independent industry code introduced to champion quality new homes and better consumer outcomes. Dimensions shown are internal finished dimensions which may vary as each home is built individually and the precise internal finishes may not always be the same. Please be aware that window and door positions could vary due to plot orientation. It is essential to view the working drawings with our Sales Executive for plot specific detail. Enquire for further information. Wain Homes Policy is continuous product and specification development. Every effort has been made to ensure the accuracy of the information provided in this leaflet at the date of publication but it may be subject to change without notice. Please consult with our Sales Executive to obtain the current specification. You should take appropriate steps to verify any information upon which you wish to rely. The sizes indicated are not intended to be used for carpet sizes, appliance spaces or items of furniture. Elevational treatments may vary to those shown. These particulars are intended for guidance only and their accuracy is not guaranteed. They do not constitute a contract, part of a contract or warranty. (March 2025)





THE DUNMERE

4 BEDROOM HOME WITH INTEGRAL GARAGE



Lounge	5935 (max) x 4390 (max)	19'6" (max) x 14'5" (max)
Kitchen/ Dining Room	2909 (max) x 7285 (max)	9'6" (max) x 23'11" (max)
Study	2937 x 2390	9'7" x 7'10"
Cloakroom	1115 x 1438	3'8" x 4'9"

Master Bedroom	3215 x 3347	10'6" x 11'0"
En-Suite	2174 (max) x 1564 (max)	7'1" (max) x 5'1" (max)
Bedroom 2	3470 x 2616	11'4" x 8'7"
Bedroom 3	2631 x 3347	8'7" x 11'0"
Bedroom 4	2796 x 2197	9'2" x 7'2"
Bathroom	1912 x 1850	6'3" x 6'1"



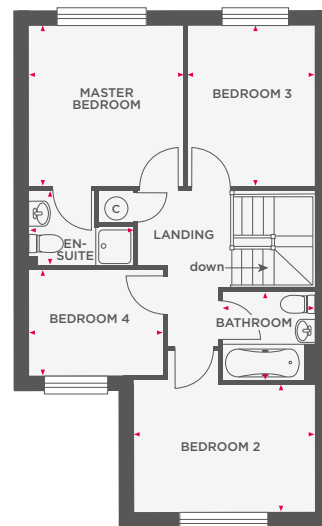
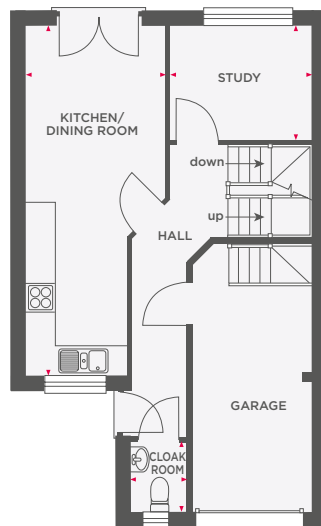
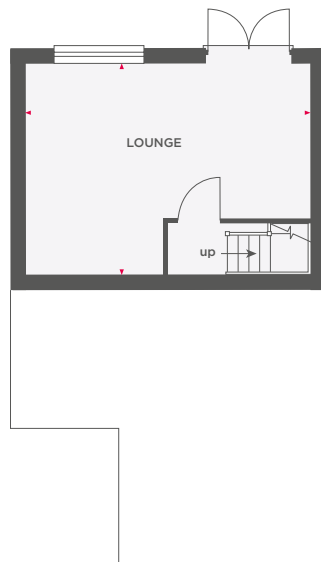
Wain Homes abides by the New Homes Quality Code, an independent industry code introduced to champion quality new homes and better consumer outcomes. Dimensions shown are internal finished dimensions which may vary as each home is built individually and the precise internal finishes may not always be the same. Please be aware that window and door positions could vary due to plot orientation. It is essential to view the working drawings with our Sales Executive for plot specific detail. Enquire for further information. Wain Homes Policy is continuous product and specification development. Every effort has been made to ensure the accuracy of the information provided in this leaflet at the date of publication but it may be subject to change without notice. Please consult with our Sales Executive to obtain the current specification. You should take appropriate steps to verify any information upon which you wish to rely. The sizes indicated are not intended to be used for carpet sizes, appliance spaces or items of furniture. Elevational treatments may vary to those shown. These particulars are intended for guidance only and their accuracy is not guaranteed. They do not constitute a contract, part of a contract or warranty. (March 2025)





THE DUNMERE

4 BEDROOM HOME WITH INTEGRAL GARAGE



Lounge	5935 (max) x 4390 (max)	19'6" (max) x 14'5" (max)
Kitchen/ Dining Room	2909 (max) x 7285 (max)	9'6" (max) x 23'11" (max)
Study	2937 x 2390	9'7" x 7'10"
Cloakroom	1115 x 1438	3'8" x 4'9"

Master Bedroom	3215 x 3347	10'6" x 11'0"
En-Suite	2174 (max) x 1564 (max)	7'1" (max) x 5'1" (max)
Bedroom 2	3470 x 2616	11'4" x 8'7"
Bedroom 3	2631 x 3347	8'7" x 11'0"
Bedroom 4	2796 x 2197	9'2" x 7'2"
Bathroom	1912 x 1850	6'3" x 6'1"



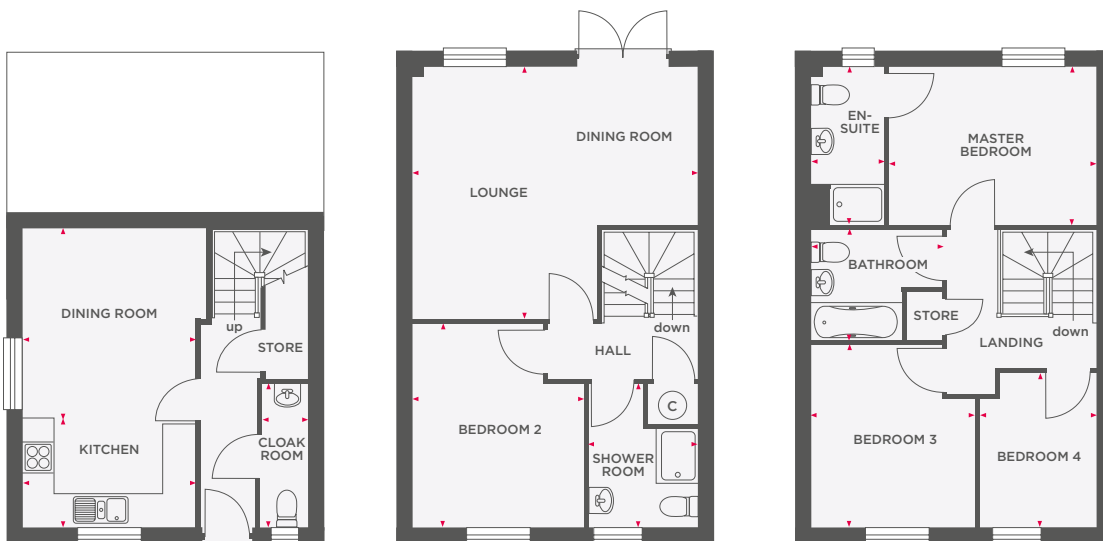
Wain Homes abides by the New Homes Quality Code, an independent industry code introduced to champion quality new homes and better consumer outcomes. Dimensions shown are internal finished dimensions which may vary as each home is built individually and the precise internal finishes may not always be the same. Please be aware that window and door positions could vary due to plot orientation. It is essential to view the working drawings with our Sales Executive for plot specific detail. Enquire for further information. Wain Homes Policy is continuous product and specification development. Every effort has been made to ensure the accuracy of the information provided in this leaflet at the date of publication but it may be subject to change without notice. Please consult with our Sales Executive to obtain the current specification. You should take appropriate steps to verify any information upon which you wish to rely. The sizes indicated are not intended to be used for carpet sizes, appliance spaces or items of furniture. Elevational treatments may vary to those shown. These particulars are intended for guidance only and their accuracy is not guaranteed. They do not constitute a contract, part of a contract or warranty. (March 2025)





THE FOXTON

4 BEDROOM HOME



Kitchen	3263 x 2451	10'8" x 8'0"
Dining Room	3263 x 3193	10'8" x 8'0"
Cloakroom	860 x 2661 (max)	2'10" x 8'9" (max)
Lounge/ Dining Room	5350 (max) x 4730 (max)	17'7" (max) x 15'6" (max)
Bedroom 2	3263 x 3832	10'8" x 12'7"
Shower Room	2000 x 1991	6'7" x 6'6"

Master Bedroom	3899 x 2892	12'9" x 9'6"
En-Suite	1363 x 2893	4'5" x 9'6"
Bedroom 3	3087 (max) x 3417 (max)	10'1" (max) x 11'2" (max)
Bedroom 4	2176 (max) x 2905 (max)	7'1" (max) x 9'6" (max)
Bathroom	2475 (max) x 2165 (max)	8'1" (max) x 7'1" (max)



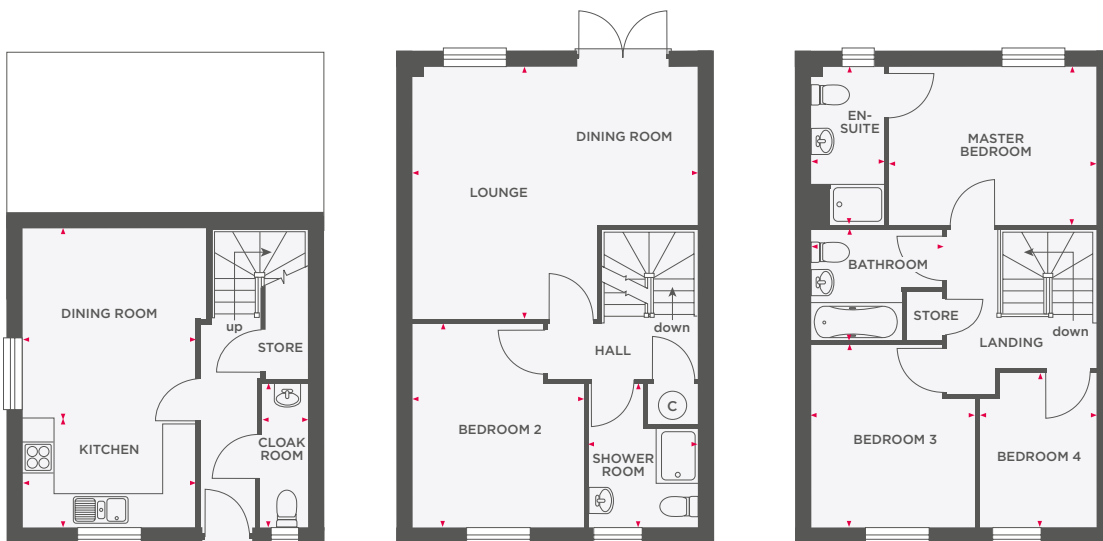
Wain Homes abides by the New Homes Quality Code, an independent industry code introduced to champion quality new homes and better consumer outcomes. Dimensions shown are internal finished dimensions which may vary as each home is built individually and the precise internal finishes may not always be the same. Please be aware that window and door positions could vary due to plot orientation. It is essential to view the working drawings with our Sales Executive for plot specific detail. Enquire for further information. Wain Homes Policy is continuous product and specification development. Every effort has been made to ensure the accuracy of the information provided in this leaflet at the date of publication but it may be subject to change without notice. Please consult with our Sales Executive to obtain the current specification. You should take appropriate steps to verify any information upon which you wish to rely. The sizes indicated are not intended to be used for carpet sizes, appliance spaces or items of furniture. Elevational treatments may vary to those shown. These particulars are intended for guidance only and their accuracy is not guaranteed. They do not constitute a contract, part of a contract or warranty. (March 2025)

**Wain
HOMES**



THE FOXTON

4 BEDROOM HOME



Kitchen	3263 x 2451	10'8" x 8'0"
Dining Room	3263 x 3193	10'8" x 8'0"
Cloakroom	860 x 2661 (max)	2'10" x 8'9" (max)
Lounge/ Dining Room	5350 (max) x 4730 (max)	17'7" (max) x 15'6" (max)
Bedroom 2	3263 x 3832	10'8" x 12'7"
Shower Room	2000 x 1991	6'7" x 6'6"

Master Bedroom	3899 x 2892	12'9" x 9'6"
En-Suite	1363 x 2893	4'5" x 9'6"
Bedroom 3	3087 (max) x 3417 (max)	10'1" (max) x 11'2" (max)
Bedroom 4	2176 (max) x 2905 (max)	7'1" (max) x 9'6" (max)
Bathroom	2475 (max) x 2165 (max)	8'1" (max) x 7'1" (max)



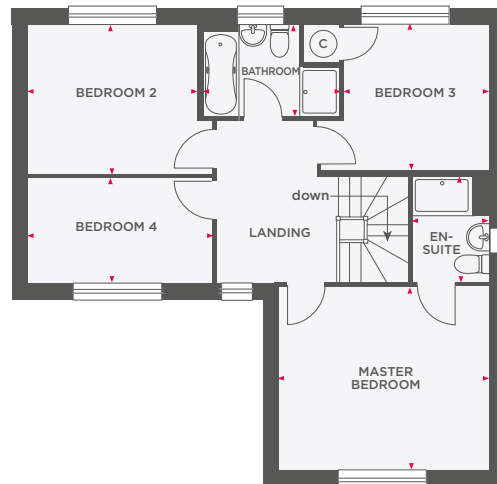
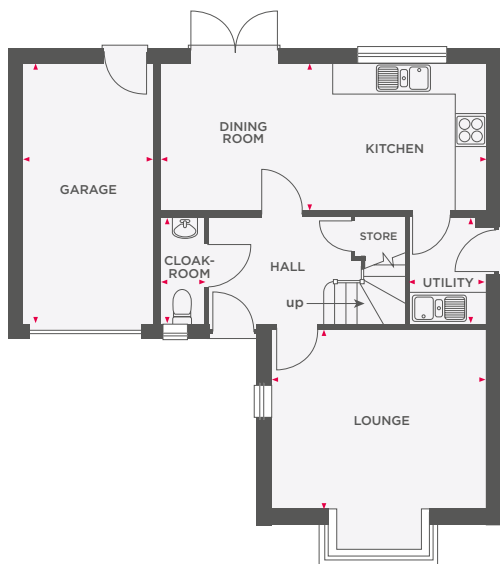
Wain Homes abides by the New Homes Quality Code, an independent industry code introduced to champion quality new homes and better consumer outcomes. Dimensions shown are internal finished dimensions which may vary as each home is built individually and the precise internal finishes may not always be the same. Please be aware that window and door positions could vary due to plot orientation. It is essential to view the working drawings with our Sales Executive for plot specific detail. Enquire for further information. Wain Homes Policy is continuous product and specification development. Every effort has been made to ensure the accuracy of the information provided in this leaflet at the date of publication but it may be subject to change without notice. Please consult with our Sales Executive to obtain the current specification. You should take appropriate steps to verify any information upon which you wish to rely. The sizes indicated are not intended to be used for carpet sizes, appliance spaces or items of furniture. Elevational treatments may vary to those shown. These particulars are intended for guidance only and their accuracy is not guaranteed. They do not constitute a contract, part of a contract or warranty. (March 2025)





THE NEWTON

4 BEDROOM HOME WITH INTEGRAL GARAGE



Lounge	4247 x 3562	13'11" x 11'8"
Kitchen/Dining Room	6459 x 2910	21'2" x 9'7"
Utility	1523 x 2088	5'2" x 6'10"
Cloakroom	855 x 2088	2'9" x 6'10"
Garage	2575 x 5198	8'5" x 17'1"

Master Bedroom	4247 x 3624	13'11" x 11'11"
En-Suite	1523 x 2088 (max)	5'0" x 6'10" (max)
Bedroom 2	3378 x 2984	11'1" x 9'10"
Bedroom 3	2896 x 2935	9'6" x 9'8"
Bedroom 4	3670 x 2075	12'1" x 6'10"
Bathroom	2716 (max) x 1850 (max)	8'11" (max) x 6'1" (max)



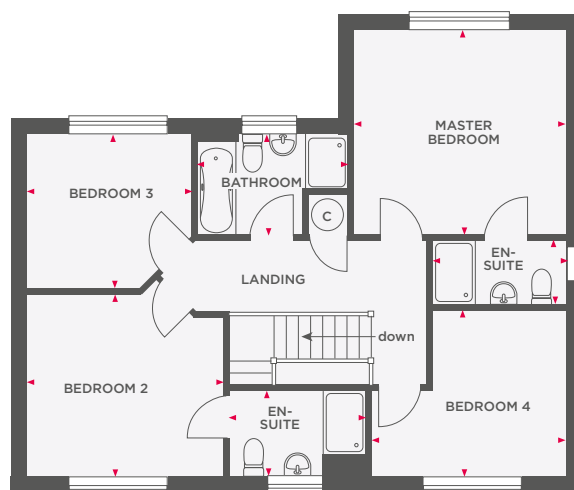
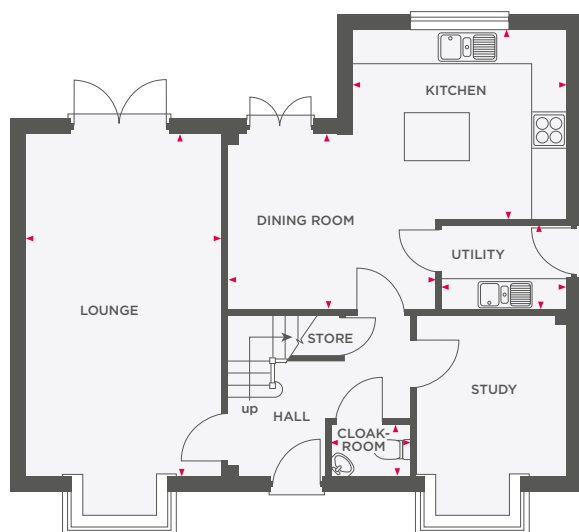
Wain Homes abides by the New Homes Quality Code, an independent industry code introduced to champion quality new homes and better consumer outcomes. Dimensions shown are internal finished dimensions which may vary as each home is built individually and the precise internal finishes may not always be the same. Please be aware that window and door positions could vary due to plot orientation. It is essential to view the working drawings with our Sales Executive for plot specific detail. Enquire for further information. Wain Homes Policy is continuous product and specification development. Every effort has been made to ensure the accuracy of the information provided in this leaflet at the date of publication but it may be subject to change without notice. Please consult with our Sales Executive to obtain the current specification. You should take appropriate steps to verify any information upon which you wish to rely. The sizes indicated are not intended to be used for carpet sizes, appliance spaces or items of furniture. Elevational treatments may vary to those shown. These particulars are intended for guidance only and their accuracy is not guaranteed. They do not constitute a contract, part of a contract or warranty. (March 2025)





THE PRIESTLEY

4 BEDROOM DETACHED HOME WITH DOUBLE GARAGE



Lounge	3500 x 6310	11'6" x 20'8"
Kitchen	3835 x 3307	12'7" x 10'2"
Dining Room	3898 x 3263	12'9" x 10'8"
Utility	2270 x 1676	7'5" x 5'6"
Cloakroom	1604 x 960	5'3" x 3'2"

Master Bedroom	3835 x 3698	12'7" x 12'1"
En-Suite	2414 x 1200	7'11" x 3'11"
Bedroom 2	3557 (max) x 3321 (max)	11'8" (max) x 10'7" (max)
En-Suite 2	2605 x 1530	8'6" x 5'0"
Bedroom 3	3079 (max) x 2896 (max)	10'1" (max) x 9'6" (max)
Bedroom 4	3541 (max) x 3027 (max)	11'7" (max) x 9'11" (max)
Bathroom	2811 x 1898	9'2" x 6'2"



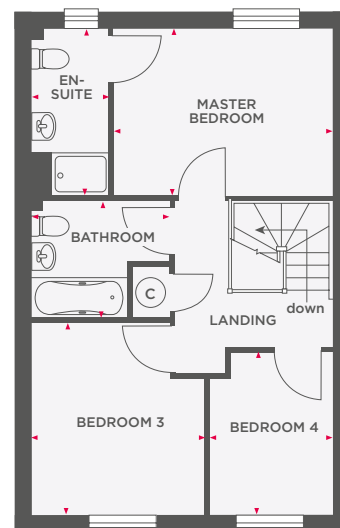
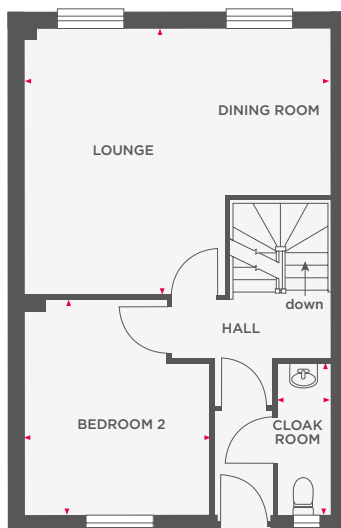
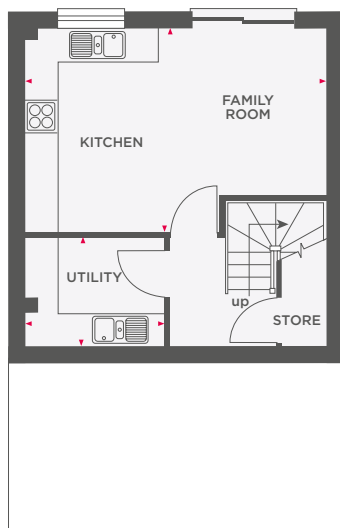
Wain Homes abides by the New Homes Quality Code, an independent industry code introduced to champion quality new homes and better consumer outcomes. Dimensions shown are internal finished dimensions which may vary as each home is built individually and the precise internal finishes may not always be the same. Please be aware that window and door positions could vary due to plot orientation. It is essential to view the working drawings with our Sales Executive for plot specific detail. Enquire for further information. Wain Homes Policy is continuous product and specification development. Every effort has been made to ensure the accuracy of the information provided in this leaflet at the date of publication but it may be subject to change without notice. Please consult with our Sales Executive to obtain the current specification. You should take appropriate steps to verify any information upon which you wish to rely. The sizes indicated are not intended to be used for carpet sizes, appliance spaces or items of furniture. Elevational treatments may vary to those shown. These particulars are intended for guidance only and their accuracy is not guaranteed. They do not constitute a contract, part of a contract or warranty. (March 2025)

Wain
HOMES



THE TREGONY

4 BEDROOM HOME



Kitchen/ Family Room	5350 (max) x 3625 (max)	17'6" (max) x 10'7" (max)
Utility	2487 x 1956	8'2" x 6'5"
Lounge	5350 (max) x 4724 (max)	17'6" (max) x 15'6" (max)
Bedroom 2	3236 (max) x 3838 (max)	10'7" (max) x 12'7" (max)
Cloakroom	910 x 2686	3'0" x 8'10"

Master Bedroom	3887 x 2957	12'9" x 9'8"
En-Suite	1375 x 2957	4'6" x 9'8"
Bedroom 3	3087 (max) x 3417 (max)	10'1" (max) x 11'2" (max)
Bedroom 4	2175 (max) x 2892 (max)	7'1" (max) x 9'6" (max)
Bathroom	2460 x 2100 (max)	8'1" x 6'11" (max)



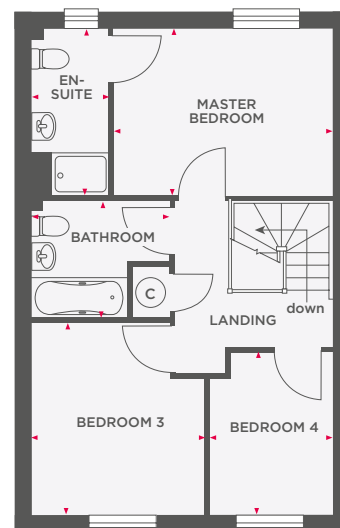
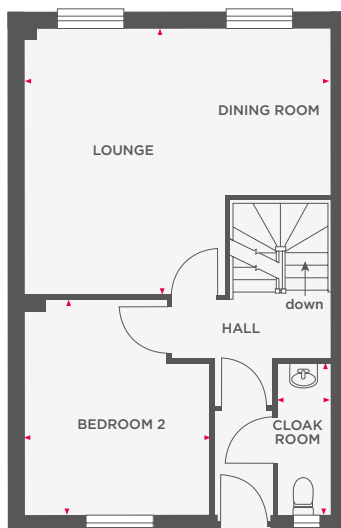
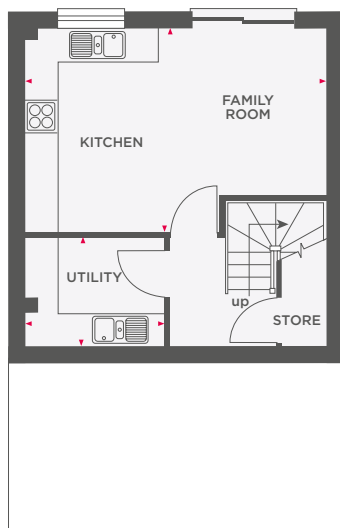
Wain Homes abides by the New Homes Quality Code, an independent industry code introduced to champion quality new homes and better consumer outcomes. Dimensions shown are internal finished dimensions which may vary as each home is built individually and the precise internal finishes may not always be the same. Please be aware that window and door positions could vary due to plot orientation. It is essential to view the working drawings with our Sales Executive for plot specific detail. Enquire for further information. Wain Homes Policy is continuous product and specification development. Every effort has been made to ensure the accuracy of the information provided in this leaflet at the date of publication but it may be subject to change without notice. Please consult with our Sales Executive to obtain the current specification. You should take appropriate steps to verify any information upon which you wish to rely. The sizes indicated are not intended to be used for carpet sizes, appliance spaces or items of furniture. Elevational treatments may vary to those shown. These particulars are intended for guidance only and their accuracy is not guaranteed. They do not constitute a contract, part of a contract or warranty. (March 2025)





THE TREGONY

4 BEDROOM HOME



Kitchen/ Family Room	5350 (max) x 3625 (max)	17'6" (max) x 10'7" (max)
Utility	2487 x 1956	8'2" x 6'5"
Lounge	5350 (max) x 4724 (max)	17'6" (max) x 15'6" (max)
Bedroom 2	3236 (max) x 3838 (max)	10'7" (max) x 12'7" (max)
Cloakroom	910 x 2686	3'0" x 8'10"

Master Bedroom	3887 x 2957	12'9" x 9'8"
En-Suite	1375 x 2957	4'6" x 9'8"
Bedroom 3	3087 (max) x 3417 (max)	10'1" (max) x 11'2" (max)
Bedroom 4	2175 (max) x 2892 (max)	7'1" (max) x 9'6" (max)
Bathroom	2460 x 2100 (max)	8'1" x 6'11" (max)



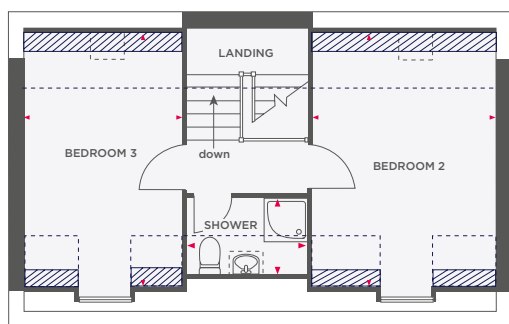
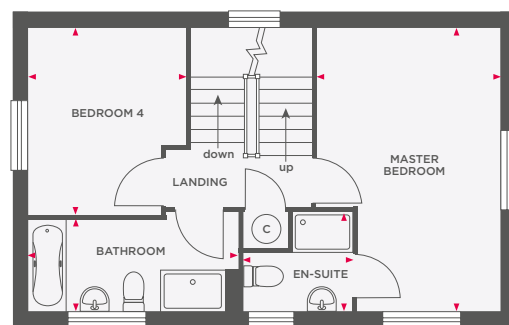
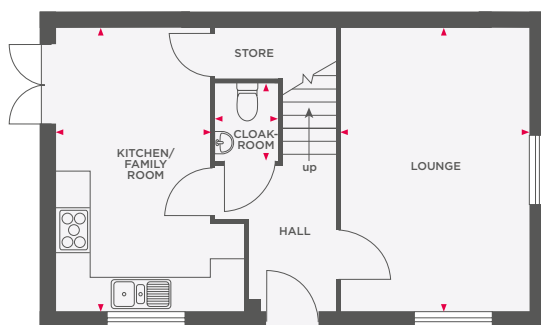
Wain Homes abides by the New Homes Quality Code, an independent industry code introduced to champion quality new homes and better consumer outcomes. Dimensions shown are internal finished dimensions which may vary as each home is built individually and the precise internal finishes may not always be the same. Please be aware that window and door positions could vary due to plot orientation. It is essential to view the working drawings with our Sales Executive for plot specific detail. Enquire for further information. Wain Homes Policy is continuous product and specification development. Every effort has been made to ensure the accuracy of the information provided in this leaflet at the date of publication but it may be subject to change without notice. Please consult with our Sales Executive to obtain the current specification. You should take appropriate steps to verify any information upon which you wish to rely. The sizes indicated are not intended to be used for carpet sizes, appliance spaces or items of furniture. Elevational treatments may vary to those shown. These particulars are intended for guidance only and their accuracy is not guaranteed. They do not constitute a contract, part of a contract or warranty. (March 2025)





THE WORDSWORTH SA

4 BEDROOM DETACHED HOME WITH GARAGE OR PARKING



Limited Use Area

Reduced head height below 1.5m

Lounge	3397 x 5072	11'1" x 16'7"
Kitchen/ Family Room	2800 x 5072	9'2" x 16'7"
Cloakroom	1083 x 1420	3'7" x 4'8"
Master Bedroom	3456 (max) x 5072 (max)	11'3" (max) x 16'7" (max)
En-Suite	2023 x 1036	6'8" x 3'5"
Bedroom 4	2800 (max) x 3284 (max)	9'2" (max) x 10'9" (max)
Bathroom	3577 x 1697	11'9" x 5'7"
Bedroom 2	3456 x 4547	11'3" x 14'11"
Bedroom 3	2800 x 4547	9'2" x 14'11"
Shower Room	2015 x 1440	6'7" x 4'9"



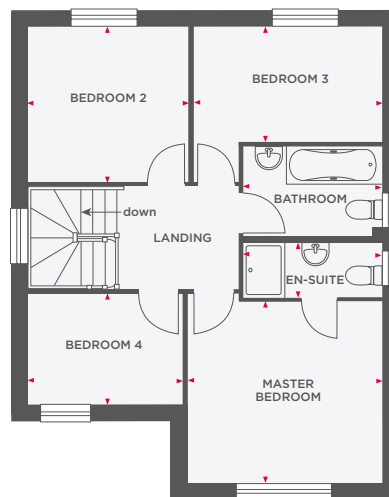
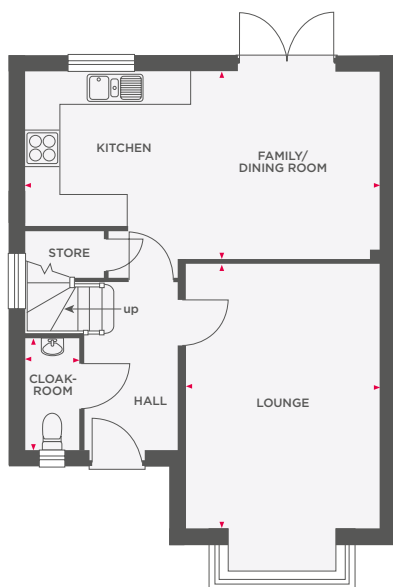
Wain Homes abides by the New Homes Quality Code, an independent industry code introduced to champion quality new homes and better consumer outcomes. Dimensions shown are internal finished dimensions which may vary as each home is built individually and the precise internal finishes may not always be the same. Please be aware that window and door positions could vary due to plot orientation. It is essential to view the working drawings with our Sales Executive for plot specific detail. Enquire for further information. Wain Homes Policy is continuous product and specification development. Every effort has been made to ensure the accuracy of the information provided in this leaflet at the date of publication but it may be subject to change without notice. Please consult with our Sales Executive to obtain the current specification. You should take appropriate steps to verify any information upon which you wish to rely. The sizes indicated are not intended to be used for carpet sizes, appliance spaces or items of furniture. Elevational treatments may vary to those shown. These particulars are intended for guidance only and their accuracy is not guaranteed. They do not constitute a contract, part of a contract or warranty. (March 2025)

Wain
HOMES



THE WREN

4 BEDROOM HOME WITH GARAGE



Lounge	3552 x 4856	11'8" x 15'11"
Kitchen/Family/ Dining Room	6490 (max) x 3424 (max)	21'3" (max) x 11'3" (max)
Cloakroom	974 x 2035	3'2" x 6'8"

Master Bedroom	3554 x 3344	11'8" x 10'11"
En-Suite	2535 x 1000	8'3" x 3'3"
Bedroom 2	2950 x 2837	9'8" x 9'3"
Bedroom 3	3452 (max) x 2095 (max)	11'4" (max) x 6'10" (max)
Bedroom 4	2847 x 2037	9'4" x 6'8"
Bathroom	2535 x 1666	8'3" x 5'6"



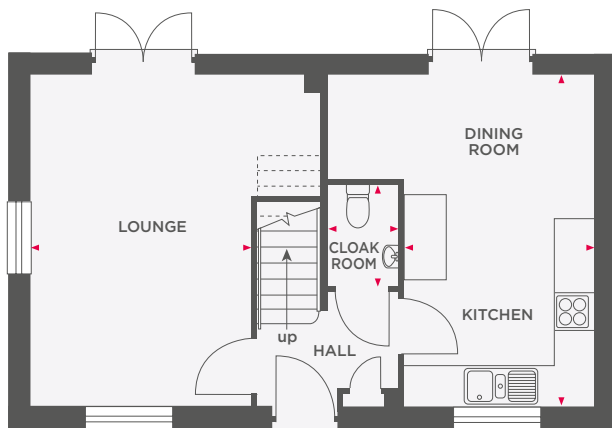
Wain Homes abides by the New Homes Quality Code, an independent industry code introduced to champion quality new homes and better consumer outcomes. Dimensions shown are internal finished dimensions which may vary as each home is built individually and the precise internal finishes may not always be the same. Please be aware that window and door positions could vary due to plot orientation. It is essential to view the working drawings with our Sales Executive for plot specific detail. Enquire for further information. Wain Homes Policy is continuous product and specification development. Every effort has been made to ensure the accuracy of the information provided in this leaflet at the date of publication but it may be subject to change without notice. Please consult with our Sales Executive to obtain the current specification. You should take appropriate steps to verify any information upon which you wish to rely. The sizes indicated are not intended to be used for carpet sizes, appliance spaces or items of furniture. Elevational treatments may vary to those shown. These particulars are intended for guidance only and their accuracy is not guaranteed. They do not constitute a contract, part of a contract or warranty. (March 2025)

Wain
HOMES

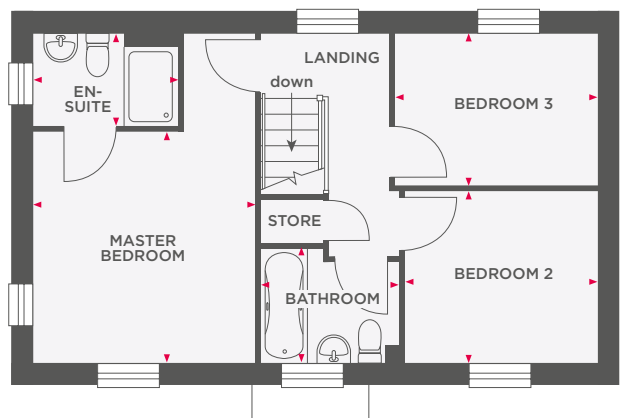


THE BRANCASTER

3 BEDROOM HOME WITH PARKING



Lounge	3315 x 4960	10'10" x 16'3"
Kitchen/Dining Room	2835 x 4960 (max)	9'3" x 16'3" (max)
Cloakroom	1058 x 1520	3'6" x 5'0"



Master Bedroom	3315 x 3485	10'10" x 11'5"
En-Suite	2165 x 1385	7'1" x 4'6"
Bedroom 2	2875 x 2586	9'5" x 8'5"
Bedroom 3	3030 x 2285	9'11" x 7'5"
Bathroom	2080 x 1700 (max)	6'9" x 5'6" (max)



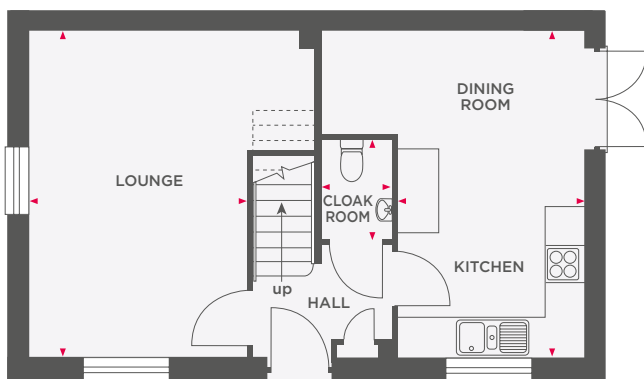
Wain Homes abides by the New Homes Quality Code, an independent industry code introduced to champion quality new homes and better consumer outcomes. Dimensions shown are internal finished dimensions which may vary as each home is built individually and the precise internal finishes may not always be the same. Please be aware that window and door positions could vary due to plot orientation. It is essential to view the working drawings with our Sales Executive for plot specific detail. Enquire for further information. Wain Homes Policy is continuous product and specification development. Every effort has been made to ensure the accuracy of the information provided in this leaflet at the date of publication but it may be subject to change without notice. Please consult with our Sales Executive to obtain the current specification. You should take appropriate steps to verify any information upon which you wish to rely. The sizes indicated are not intended to be used for carpet sizes, appliance spaces or items of furniture. Elevational treatments may vary to those shown. These particulars are intended for guidance only and their accuracy is not guaranteed. They do not constitute a contract, part of a contract or warranty. (March 2025)



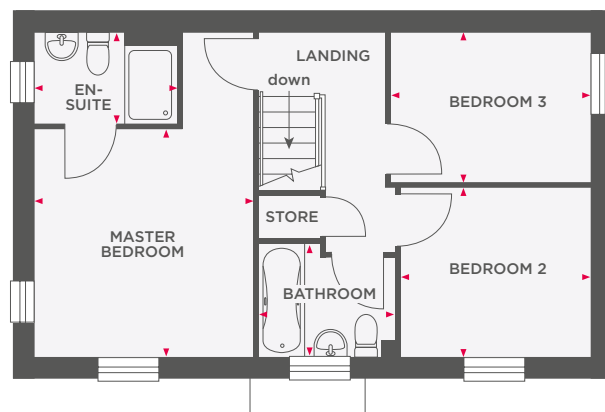


THE BRANCASTER SA

3 BEDROOM HOME WITH PARKING



Lounge	3315 x 4960	10'10" x 16'3"
Kitchen/Dining Room	2835 x 4960 (max)	9'3" x 16'3" (max)
Cloakroom	1058 x 1520	3'6" x 5'0"



Master Bedroom	3315 x 3485	10'10" x 11'5"
En-Suite	2165 x 1385	7'1" x 4'6"
Bedroom 2	2875 x 2586	9'5" x 8'5"
Bedroom 3	3030 x 2285	9'11" x 7'5"
Bathroom	2080 x 1700 (max)	6'9" x 5'6" (max)



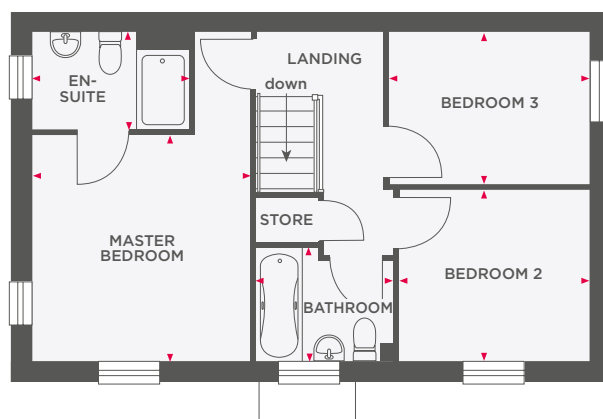
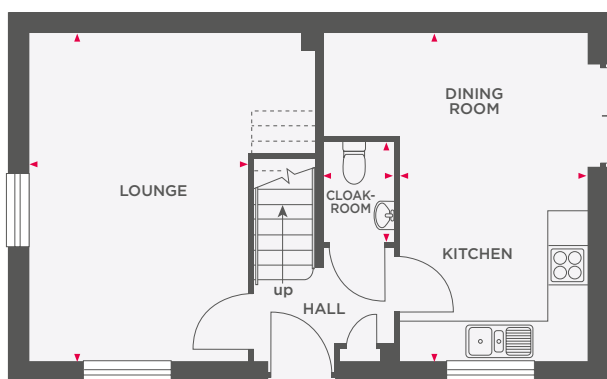
Wain Homes abides by the New Homes Quality Code, an independent industry code introduced to champion quality new homes and better consumer outcomes. Dimensions shown are internal finished dimensions which may vary as each home is built individually and the precise internal finishes may not always be the same. Please be aware that window and door positions could vary due to plot orientation. It is essential to view the working drawings with our Sales Executive for plot specific detail. Enquire for further information. Wain Homes Policy is continuous product and specification development. Every effort has been made to ensure the accuracy of the information provided in this leaflet at the date of publication but it may be subject to change without notice. Please consult with our Sales Executive to obtain the current specification. You should take appropriate steps to verify any information upon which you wish to rely. The sizes indicated are not intended to be used for carpet sizes, appliance spaces or items of furniture. Elevational treatments may vary to those shown. These particulars are intended for guidance only and their accuracy is not guaranteed. They do not constitute a contract, part of a contract or warranty. (March 2025)

Wain
HOMES



THE CROMWELL SA

3 BEDROOM HOME



Lounge	3428 x 4960	11'3" x 16'3"
Kitchen/Dining Room	2953 x 4960 (max)	9'8" x 16'3" (max)
Cloakroom	1058 x 1520	3'6" x 5'0"

Master Bedroom	3428 x 3419	11'3" x 11'3"
En-Suite	2495 x 1452	8'2" x 4'9"
Bedroom 2	2991 x 2586	9'10" x 8'6"
Bedroom 3	3145 x 2286	10'4" x 7'6"
Bathroom	2080 x 1715 (max)	6'9" x 5'7" (max)



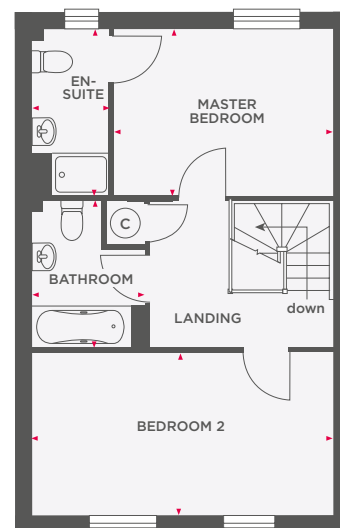
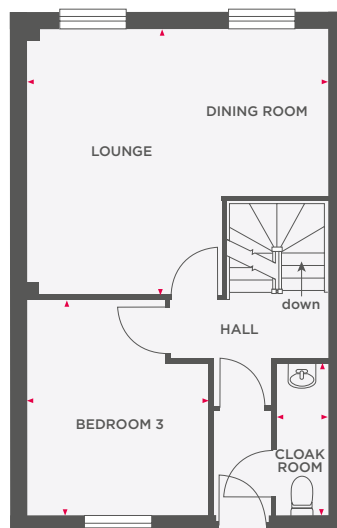
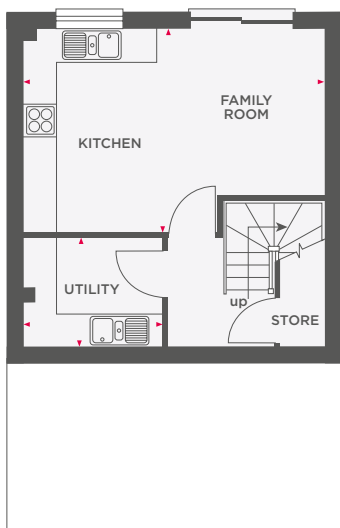
Wain Homes abides by the New Homes Quality Code, an independent industry code introduced to champion quality new homes and better consumer outcomes. Dimensions shown are internal finished dimensions which may vary as each home is built individually and the precise internal finishes may not always be the same. Please be aware that window and door positions could vary due to plot orientation. It is essential to view the working drawings with our Sales Executive for plot specific detail. Enquire for further information. Wain Homes Policy is continuous product and specification development. Every effort has been made to ensure the accuracy of the information provided in this leaflet at the date of publication but it may be subject to change without notice. Please consult with our Sales Executive to obtain the current specification. You should take appropriate steps to verify any information upon which you wish to rely. The sizes indicated are not intended to be used for carpet sizes, appliance spaces or items of furniture. Elevational treatments may vary to those shown. These particulars are intended for guidance only and their accuracy is not guaranteed. They do not constitute a contract, part of a contract or warranty. (March 2025)





THE CURIE

3 BEDROOM HOME



Kitchen/ Family Room	3625 (max) x 4900 (max)	11'10" (max) x 16'1" (max)
Utility	1962 x 1931	6'5" x 6'4"
Lounge	4850 (max) x 4724 (max)	15'11" (max) x 15'6" (max)
Bedroom 3	2736 x 3838	9'0" x 12'7"
Cloakroom	940 x 2686	3'1" x 8'10"

Master Bedroom	3387 x 2957	11'1" x 9'8"
En-Suite	1375 x 2957	46" x 9'8"
Bedroom 2	4850 x 2892	15'11" x 9'6"
Bathroom	1987 x 2624	16'16" x 8'7"



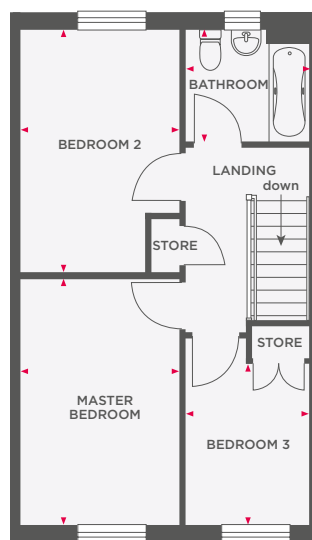
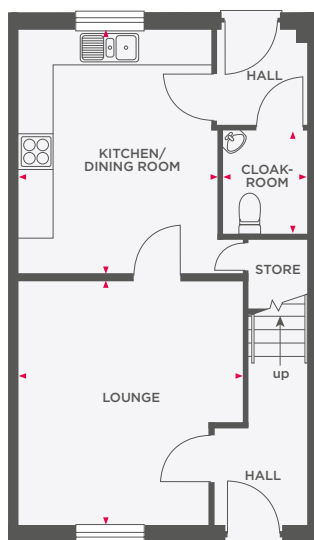
Wain Homes abides by the New Homes Quality Code, an independent industry code introduced to champion quality new homes and better consumer outcomes. Dimensions shown are internal finished dimensions which may vary as each home is built individually and the precise internal finishes may not always be the same. Please be aware that window and door positions could vary due to plot orientation. It is essential to view the working drawings with our Sales Executive for plot specific detail. Enquire for further information. Wain Homes Policy is continuous product and specification development. Every effort has been made to ensure the accuracy of the information provided in this leaflet at the date of publication but it may be subject to change without notice. Please consult with our Sales Executive to obtain the current specification. You should take appropriate steps to verify any information upon which you wish to rely. The sizes indicated are not intended to be used for carpet sizes, appliance spaces or items of furniture. Elevational treatments may vary to those shown. These particulars are intended for guidance only and their accuracy is not guaranteed. They do not constitute a contract, part of a contract or warranty. (March 2025)





THE DARWIN

3 BEDROOM HOME WITH PARKING



Lounge	3940 (max) x 4268	12'11" (max) x 14'0"
Kitchen/Dining Room	3502 (max) x 4249	11'6" (max) x 13'11"
Cloakroom	1470 x 1830	4'10" x 6'0"

Master Bedroom	2802 x 4325	9'2" x 14'2"
Bedroom 2	2802 x 4242	9'2" x 13'11"
Bedroom 3	2165 x 2828	7'1" x 9'3"
Bathroom	2171 x 1936	7'1" x 6'4"



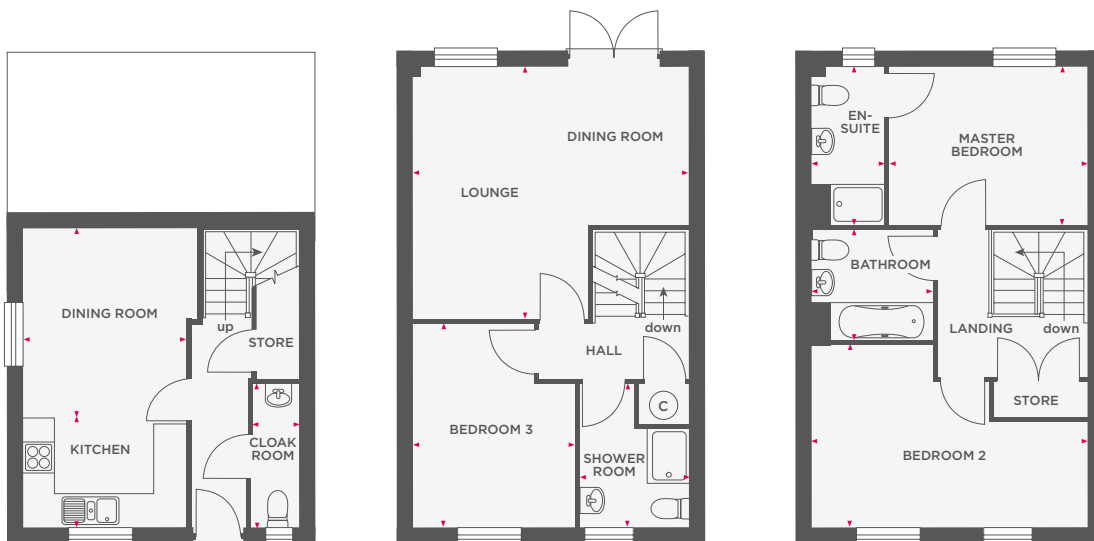
Wain Homes abides by the New Homes Quality Code, an independent industry code introduced to champion quality new homes and better consumer outcomes. Dimensions shown are internal finished dimensions which may vary as each home is built individually and the precise internal finishes may not always be the same. Please be aware that window and door positions could vary due to plot orientation. It is essential to view the working drawings with our Sales Executive for plot specific detail. Enquire for further information. Wain Homes Policy is continuous product and specification development. Every effort has been made to ensure the accuracy of the information provided in this leaflet at the date of publication but it may be subject to change without notice. Please consult with our Sales Executive to obtain the current specification. You should take appropriate steps to verify any information upon which you wish to rely. The sizes indicated are not intended to be used for carpet sizes, appliance spaces or items of furniture. Elevational treatments may vary to those shown. These particulars are intended for guidance only and their accuracy is not guaranteed. They do not constitute a contract, part of a contract or warranty. (March 2025)





THE FRANKLIN

3 BEDROOM HOME



Kitchen	2763 x 2451	9'1" x 8'0"
Dining Room	2763 x 3193	9'1" x 8'0"
Cloakroom	863 x 2663	2'10" x 8'9"
Lounge/ Dining Room	4850 (max) x 4730 (max)	15'11" (max) x 15'6" (max)
Bedroom 3	2763 x 3832	9'1" x 12'7"
Shower Room	2000 x 1991	6'7" x 6'6"

Master Bedroom	3399 x 2892	11'2" x 9'6"
En-Suite	1363 x 2893	4'5" x 9'6"
Bedroom 2	3851 (max) x 3417 (max)	15'11" (max) x 11'2" (max)
Bathroom	1974 (max) x 2164 (max)	6'6" (max) x 7'1" (max)



Wain Homes abides by the New Homes Quality Code, an independent industry code introduced to champion quality new homes and better consumer outcomes. Dimensions shown are internal finished dimensions which may vary as each home is built individually and the precise internal finishes may not always be the same. Please be aware that window and door positions could vary due to plot orientation. It is essential to view the working drawings with our Sales Executive for plot specific detail. Enquire for further information. Wain Homes Policy is continuous product and specification development. Every effort has been made to ensure the accuracy of the information provided in this leaflet at the date of publication but it may be subject to change without notice. Please consult with our Sales Executive to obtain the current specification. You should take appropriate steps to verify any information upon which you wish to rely. The sizes indicated are not intended to be used for carpet sizes, appliance spaces or items of furniture. Elevational treatments may vary to those shown. These particulars are intended for guidance only and their accuracy is not guaranteed. They do not constitute a contract, part of a contract or warranty. (March 2025)





THE HANBURY

3 BEDROOM HOME WITH PARKING



Lounge	3861 (max) x 4523 (max)	12'8" (max) x 14'10" (max)
Kitchen/ Family Room	2795 (max) x 4900	9'2" (max) x 16'1"
Cloakroom	1471 x 1399	4'10" x 4'7"

Bedroom 2	2816 x 3952	9'3" x 13'0"
Bedroom 3	2816 x 3348	9'3" x 11'0"
Bathroom	2027 x 2647	6'8" x 8'2"

Master Bedroom	3899 (max) x 5313 (max)	12'10" (max) x 17'5" (max)
En-Suite	2193 (max) x 1663 (max)	7'2" (max) x 5'4" (max)



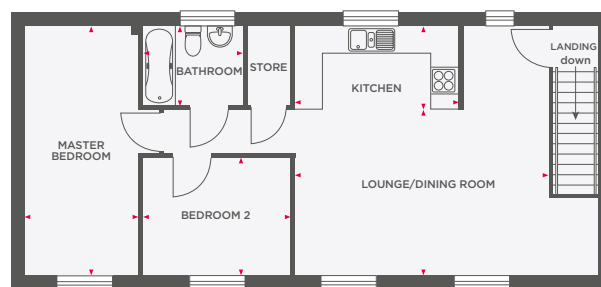
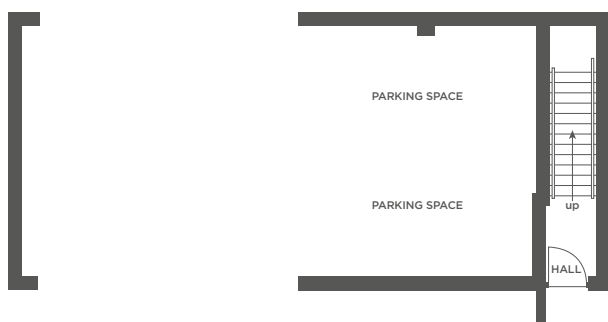
Wain Homes abides by the New Homes Quality Code, an independent industry code introduced to champion quality new homes and better consumer outcomes. Dimensions shown are internal finished dimensions which may vary as each home is built individually and the precise internal finishes may not always be the same. Please be aware that window and door positions could vary due to plot orientation. It is essential to view the working drawings with our Sales Executive for plot specific detail. Enquire for further information. Wain Homes Policy is continuous product and specification development. Every effort has been made to ensure the accuracy of the information provided in this leaflet at the date of publication but it may be subject to change without notice. Please consult with our Sales Executive to obtain the current specification. You should take appropriate steps to verify any information upon which you wish to rely. The sizes indicated are not intended to be used for carpet sizes, appliance spaces or items of furniture. Elevational treatments may vary to those shown. These particulars are intended for guidance only and their accuracy is not guaranteed. They do not constitute a contract, part of a contract or warranty. (March 2025)

**Wain
HOMES**



THE CLAREMONT

2 BEDROOM COACH HOUSE



Lounge/Dining Room	5526 x 3597	18'1" x 11'9"
Kitchen	3552 x 1803	11'8" x 5'11"
Master Bedroom	5400 x 2441	17'8" x 8'0"
Bedroom 2	3222 x 2541	10'7" x 8'4"
Bathroom	2196 x 1712	7'2" x 5'7"



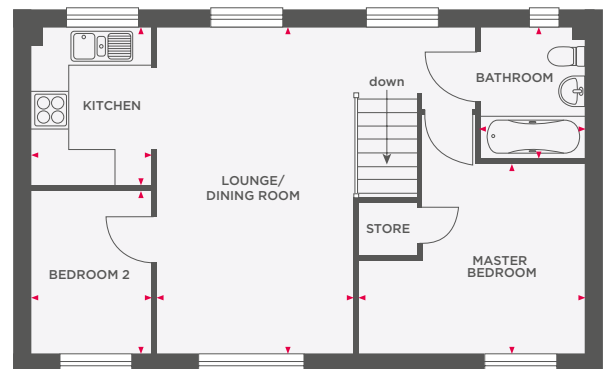
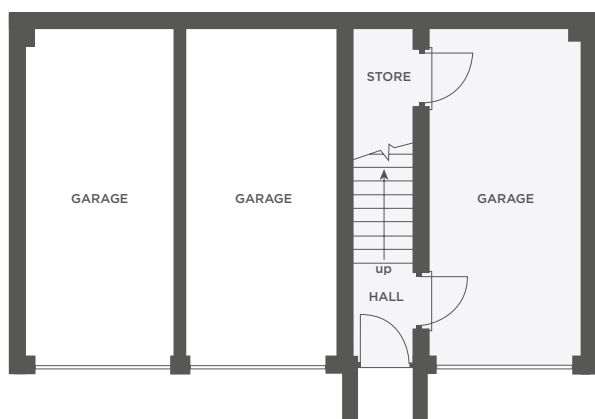
Wain Homes abides by the New Homes Quality Code, an independent industry code introduced to champion quality new homes and better consumer outcomes. Dimensions shown are internal finished dimensions which may vary as each home is built individually and the precise internal finishes may not always be the same. Please be aware that window and door positions could vary due to plot orientation. It is essential to view the working drawings with our Sales Executive for plot specific detail. Enquire for further information. Wain Homes Policy is continuous product and specification development. Every effort has been made to ensure the accuracy of the information provided in this leaflet at the date of publication but it may be subject to change without notice. Please consult with our Sales Executive to obtain the current specification. You should take appropriate steps to verify any information upon which you wish to rely. The sizes indicated are not intended to be used for carpet sizes, appliance spaces or items of furniture. Elevational treatments may vary to those shown. These particulars are intended for guidance only and their accuracy is not guaranteed. They do not constitute a contract, part of a contract or warranty. (March 2025)





THE DUNHAM

2 BEDROOM COACH HOUSE WITH GARAGE



Lounge/ Dining Room	5400 x 3283	17'8" x 10'9"
Kitchen	1973 x 2610	6'5" x 8'6"
Master Bedroom	3734 (max) x 3147 (max)	12'3" (max) x 10'4" (max)
Bedroom 2	1973 x 2702	6'5" x 8'10"
Bathroom	1712 x 2163	5'7" x 7'1"



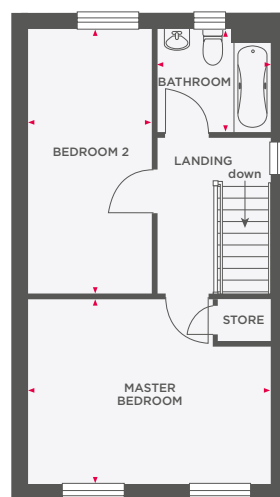
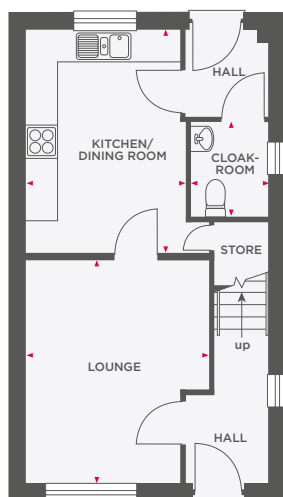
Wain Homes abides by the New Homes Quality Code, an independent industry code introduced to champion quality new homes and better consumer outcomes. Dimensions shown are internal finished dimensions which may vary as each home is built individually and the precise internal finishes may not always be the same. Please be aware that window and door positions could vary due to plot orientation. It is essential to view the working drawings with our Sales Executive for plot specific detail. Enquire for further information. Wain Homes Policy is continuous product and specification development. Every effort has been made to ensure the accuracy of the information provided in this leaflet at the date of publication but it may be subject to change without notice. Please consult with our Sales Executive to obtain the current specification. You should take appropriate steps to verify any information upon which you wish to rely. The sizes indicated are not intended to be used for carpet sizes, appliance spaces or items of furniture. Elevational treatments may vary to those shown. These particulars are intended for guidance only and their accuracy is not guaranteed. They do not constitute a contract, part of a contract or warranty. (March 2025)





THE HOCKNEY

2 BEDROOM HOME



Lounge	3490 (max) x 4318	11'5" (max) x 14'2"
Kitchen/Dining Room	3053 x 4318	10'0" x 14'2"
Cloakroom	1471 x 1821	4'10" x 6'0"

Master Bedroom	4618 x 3526	15'2" x 11'7"
Bedroom 2	2353 x 5042	7'9" x 16'6"
Bathroom	2170 x 1918	7'1" x 6'4"



Wain Homes abides by the New Homes Quality Code, an independent industry code introduced to champion quality new homes and better consumer outcomes. Dimensions shown are internal finished dimensions which may vary as each home is built individually and the precise internal finishes may not always be the same. Please be aware that window and door positions could vary due to plot orientation. It is essential to view the working drawings with our Sales Executive for plot specific detail. Enquire for further information. Wain Homes Policy is continuous product and specification development. Every effort has been made to ensure the accuracy of the information provided in this leaflet at the date of publication but it may be subject to change without notice. Please consult with our Sales Executive to obtain the current specification. You should take appropriate steps to verify any information upon which you wish to rely. The sizes indicated are not intended to be used for carpet sizes, appliance spaces or items of furniture. Elevational treatments may vary to those shown. These particulars are intended for guidance only and their accuracy is not guaranteed. They do not constitute a contract, part of a contract or warranty. (March 2025)

