

Pine

Three bedroom home



Where you
want to be


Harwood
Homes

Pine

Three bedroom home

The Pine is a wonderful 3 bedroom home benefiting from the modern touch. The open-plan kitchen/ dining area acts as the heart of the home, together with an en-suite master bedroom, spacious lounge and family bathroom.

Ground floor



Lounge	15'4" x 10'6"	4.67 x 3.19 m
Kitchen/ Dining	17'7" x 10'2"	5.35 x 3.09 m
Cloaks	5'8" x 2'11"	1.72 x 0.90 m

First floor

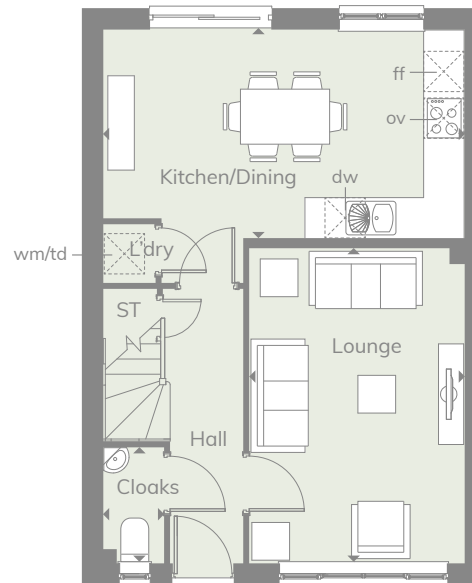
Bedroom 1	11'10" x 10'8"	3.61 x 3.26 m
En-suite	7'5" x 3'11"	2.25 x 1.19 m
Bedroom 2	10'1" x 9'7"	3.07 x 2.92 m
Bedroom 3	10'3" x 7'2"	3.12 x 2.19 m
Bathroom	8'5" x 6'7"	2.57 x 2.00 m

Customers should note this illustration is an example of the Pine house type. All dimensions indicated are approximate and the furniture layout is for illustrative purposes only. Homes may be 'handed' (mirror image) versions of the illustrations, and may be detached, semi-detached or terraced. Materials used may differ from plot to plot including render and roof tile colours. Detailed plans and specifications are available for inspection for each plot at our Sales Centre during working hours and customers must check their individual specifications prior to making a reservation.

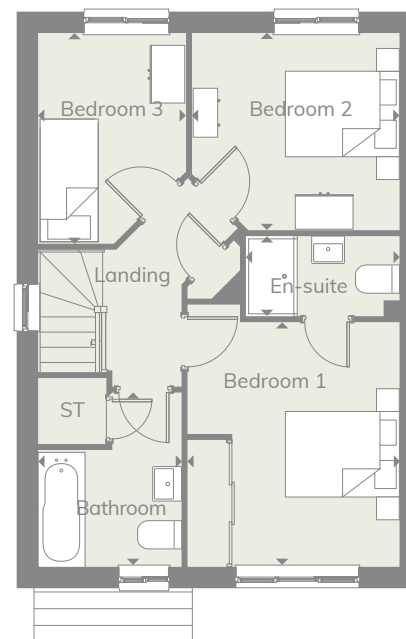
KEY

 Hob	 Tumble dryer space
 Oven	 Cupboard
 Fridge/freezer	 Washing machine space
 Dishwasher	

Ground floor



First floor



**CONSUMER
CODE FOR
HOME BUILDERS**

www.consumercode.co.uk

† Denotes where dimensions are taken from. All wardrobes are subject to site specification. Please see Sales Consultant for further details.

THINK 207465_EF_PINE_SM.1 RV

Discover where you want to be and visit
harwoodhomes.co.uk


**Harwood
Homes**