

Ground Floor

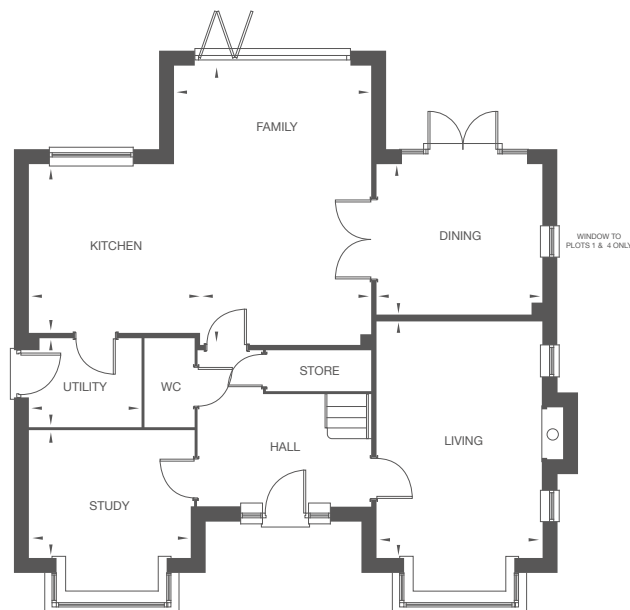
Living	3.55m x 5.11m 11' 8" x 16' 9"
Kitchen	3.45m x 3.62m 11' 4" x 11' 10"
Dining	3.55m x 3.23m 11' 8" x 10' 7"
Family	3.93m x 6.01m 12' 10" x 19' 8"
Study	3.49m x 2.73m 11' 5" x 8' 11"
Utility	2.40m x 1.90m 7' 10" x 6' 3"

First Floor

Bedroom 1	4.23m x 3.21m 13' 10" x 10' 6"
En Suite 1	1.61m x 2.24m 5' 3" x 7' 4"
Bedroom 2	3.58m x 3.91m 11' 9" x 12' 10"
Jack and Jill En Suite	3.59m x 1.55m 11' 9" x 5' 1"
Bedroom 3	2.82m x 3.59m 9' 3" x 11' 9"
Bedroom 4	3.30m x 3.06m 10' 10" x 10' 0"
Bedroom 5	3.49m x 3.00m 11' 5" x 9' 10"
Bathroom	1.99m x 2.59m 6' 6" x 8' 6"

Total Area = 200.76m² 2161 ft²

Ground Floor



First Floor

