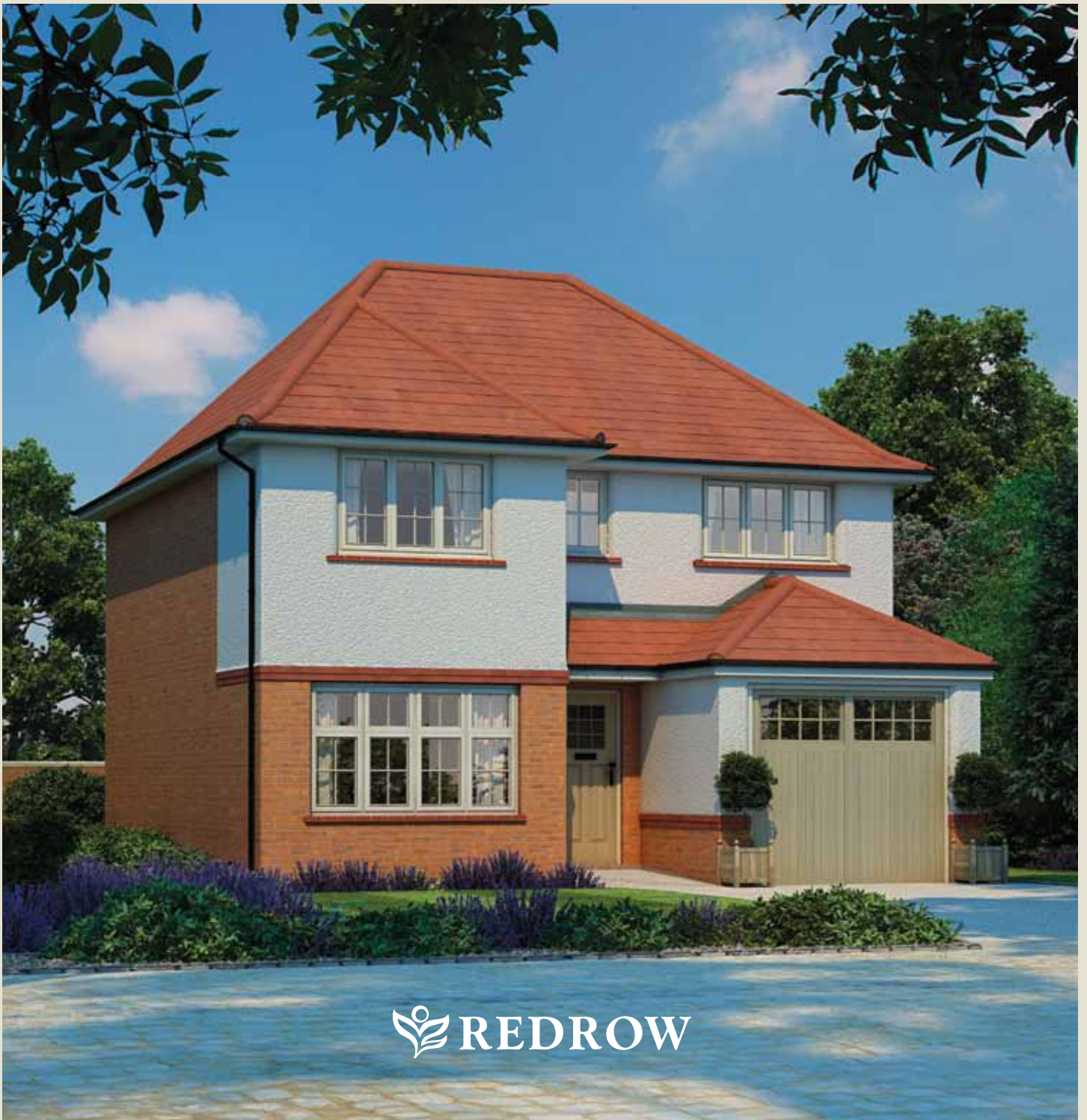




# Windsor

FOUR BEDROOM HOME



 REDROW

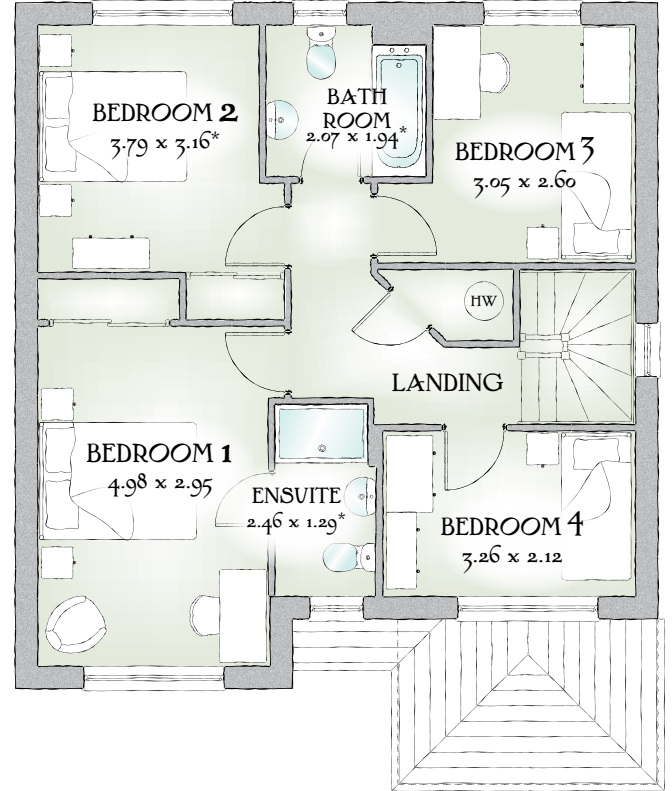
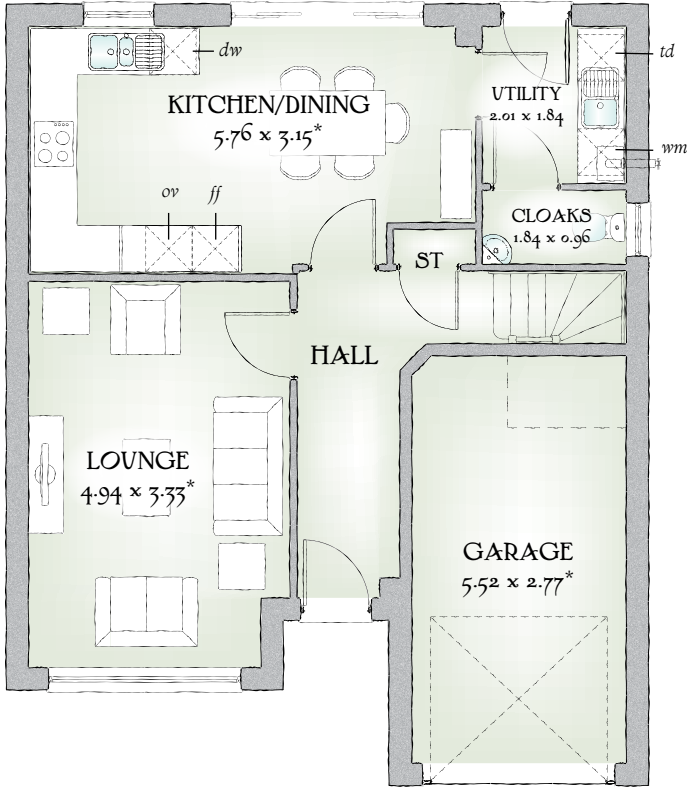


# Windsor

FOUR BEDROOM HOME



 REDROW



1189 SQ FT | FOUR BEDROOM HOME

This home has extensive living space that excels at every turn, from the pleasing proportions of every room to the excellent use of space, to the luxurious finishing touches that complete this special home.

## GROUND FLOOR

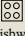
Lounge	16'3" x 10'11"	4.94 x 3.33 m*
Kitchen/ Dining	18'11" x 10'4"	5.76 x 3.15 m*
Utility	6'7" x 6'0"	2.01 x 1.84 m
Cloaks	6'0" x 3'2"	1.84 x 0.96 m
Garage	18'1" x 9'1"	5.52 x 2.77 m*

## FIRST FLOOR

Bedroom 1	16'4" x 9'8"	4.98 x 2.95 m
EnSuite	8'1" x 4'3"	2.46 x 1.29 m*
Bedroom 2	12'5" x 10'5"	3.79 x 3.16 m*
Bedroom 3	10'0" x 8'6"	3.05 x 2.60 m
Bedroom 4	10'8" x 6'11"	3.26 x 2.12 m
Bathroom	6'9" x 6'4"	2.07 x 1.94 m*

Customers should note this illustration is an example of The Windsor housetype. All dimensions indicated are approximate and furniture layout is for illustrative purposes only. Homes may be a 'handed' (mirror image) versions of the illustrations, and may be detached, semi-detached or terraced. Materials used may differ from plot to plot including render and roof tile colours. Detailed plans and specifications are available for inspection for each plot at our Marketing Suite during working hours and customers must check their individual specifications prior to making reservation.

\*\* All wardrobes are subject to site specification. Please see Sales Consultant for further details.

KEY  Hob *ov* Oven *ff* Fridge/freezer *wm* Washing machine space *dw* Dishwasher space *op* Optional wardrobe\*\* *td* Tumble dryer space *hw* Hot Water Cylinder

\*Max dimensions Note: Bedroom dimensions taken into wardrobe recess

Traditional homes, built the way you remember



OUR PRIDE~YOUR JOY