

POUNDBURY

— DORCHESTER —



Plot 411

3 bedroom mews house



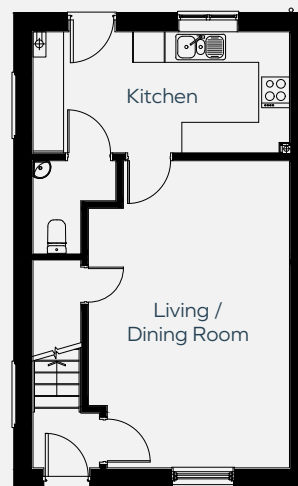
Plot 411

3 bedroom
mews house
87 m² - 937 sq ft

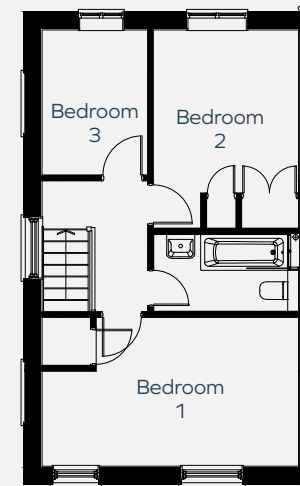
- Spacious front aspect living / dining room
- Kitchen overlooking the garden
- Master bedroom with storage
- Fitted wardrobes to bedroom two
- Family bathroom
- Two allocated parking spaces
- Enclosed rear garden

POUNDBURY — DORCHESTER —

Ground Floor



First Floor



Living / Dining Room	6.0m x 3.9m	19'8" x 12'9"
Kitchen	5.0m x 2.4m	16'4" x 7'10"

Bedroom One	5.0m x 2.9m	16'4" x 9'6"
Bedroom Two	3.2m x 2.8m	10'5" x 9'2"
Bedroom Three	2.8m x 2.1m	9'2" x 6'10"

Plot floor plans are provided to indicate proposed floor layout for each home. Room measurements are accurate within + or - 50mm, however it is not recommended that these measurements are used for flooring installation, or such like, as plots can sometimes vary. The computer generated image is indicative and for guidance only.



Raising Standards. Protecting Homeowners



www.consumercode.co.uk

01305 213745
morrishomes.co.uk

